



# Preliminary Information

## PIT6057A Power Swing Gate will not power open or unlatch and only move 1-2 mm

Product Investigation Review Required

### Models

Brand:	Model:	Model Years:	VIN:		Engine:	Transmissions:
			from	to		
GMC	HUMMER EV SUV	2024	All	All	All	All

Involved Region or Country	North America
Condition	<p>Some customers may comment:</p> <ul style="list-style-type: none"> <li>The power swing gate will make a click noise when trying to open, but the gate will not move.</li> <li>The gate will move 1-2 mm after hearing the latch release but will not open.</li> <li>Pulling the spare tire helps the gate initially open.</li> <li>The gate will not close, or try to close and reverse slightly</li> <li>In all the above scenarios, the lights may flash and vehicle chime while trying to open or close the gate.</li> </ul>
Cause	<p>This may be caused by:</p> <ul style="list-style-type: none"> <li>Improper swing gate wedge alignment (body side)</li> <li>Swing gate striker and wedge are not parallel to each other</li> <li>Over-slam bumpers are not engaged with the body</li> <li>K194 Rear Gate Module was not relearned with the vehicle <u>level</u> parked on a <u>level</u> surface</li> <li>Verify proper use of the open/close buttons. <ul style="list-style-type: none"> <li>Front inside the vehicle, to open or close the swing gate, press and <u>hold</u> (on the instrument panel to the left of the steering wheel)</li> <li>Front the key fob, press the button once, and then immediately press and <u>hold</u> until the operation is complete</li> </ul> </li> </ul>

### **Correction:**

If you experience this concern, Inspect the swing gate guide wedge or the swing gate receiver for signs of scraping or rubbing ( See photo examples below)



Top side of Lower Wedge above

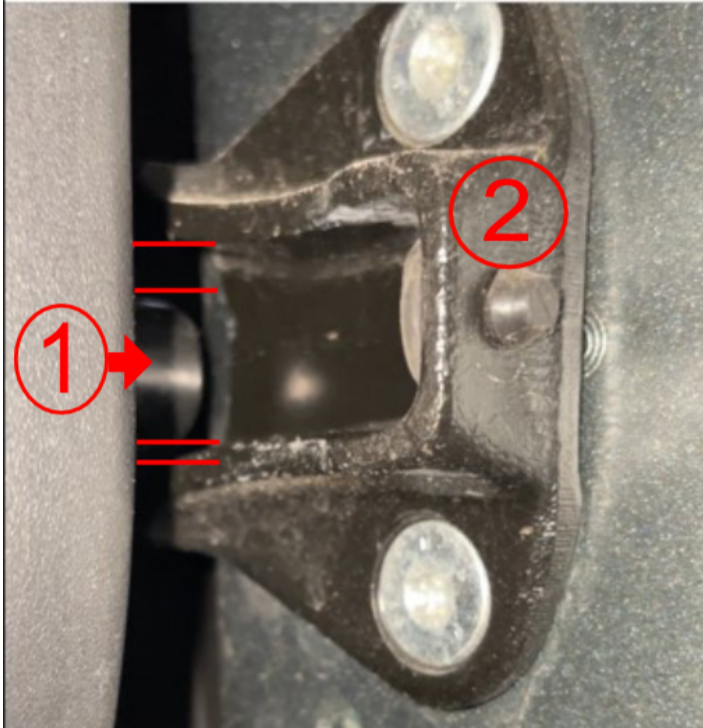


Bottom side of lower wedge above



## Wedge receiver above

Additionally, with the door almost closed, slowly open and close the door and listen and feel for any rubbing between the lower wedge (#1) and the wedge receiver (#2). The lower wedge (#1) should aim to fit into the center of the wedge receiver. See picture below.



To correct this concern, Start by opening the swing gate. To open the swing gate, grab the spare tire and pull the door open while pressing the unlock button. Once the door is open, slightly loosen the rear door guide wedge bolts on the body ( See Document ID: 6379244 in SI ). Push the close button and let the door auto close.

The wedge will self-align. Check that the lower wedge is centered in the wedge receiver. Open and close the door to verify proper operation. Torque the T40 wedge bolts to 22 Nm (16 lb. ft.)

**NOTE: The Spare tire should always be installed when making any adjustments to the swing gate.**

Next, make sure the striker and the lower wedge are parallel with each other, along with proper alignment of the wedge receiver.



If after aligning the wedge, the gate still has a issues opening automatically, work through the striker alignment procedure which can be found under Document id: 5830237 In SI.

Lastly, check the position of the swing gate bumpers. Adjust them so they are just touching the body.



**IMPORTANT:** When relearning the K194 Rear Gate Module, it is critical that the vehicle is level and it parked on a level surface. If not, the inclinometer within the K194 module will think the vehicle is uneven and when operating the swing gate on a level surface after the relearn, abnormal door performance is more likely to occur. This

includes gate unlatching but not opening. Or with the gate open, it might try to close but stop and will reverse direction slightly.

Lastly, check and perform K194 Rear Gate Module software using SPS and update/relearn if a new software is available. Follow [PIT6065](#) for full vehicle software update.

### Version History

Version	2
Modified	09/14/2023 - Created on. 05/17/2024- Updates to the correction field.



GENERAL MOTORS

© 2024 General Motors. All Rights Reserved.