



SERVICE CAMPAIGN BULLETIN

SUBJECT		No: SC-24-001REV	
LANE KEEP ASSIST REPROGRAM FOR ADAS ECU - SERVICE CAMPAIGN - REVISED		DATE: July 2024	
		MODEL: Outlander	
CIRCULATE TO:	<input type="checkbox"/> GENERAL MANAGER	<input checked="" type="checkbox"/> PARTS MANAGER	<input checked="" type="checkbox"/> TECHNICIAN
<input checked="" type="checkbox"/> SERVICE ADVISOR	<input checked="" type="checkbox"/> SERVICE MANAGER	<input checked="" type="checkbox"/> WARRANTY PROCESSOR	<input type="checkbox"/> SALES MANAGER

This bulletin supersedes SC-24-001 dated April 2024 to update the affected vehicles. Revisions are italicized and indicated by ◀.

PURPOSE

This bulletin provides instructions to reprogram the ADAS ECU software on 2022 *and* 2023 Model Year Outlander. ◀

BACKGROUND

The actual operation of Lane Keep Assist (LKA) mismatches LKA conditions described in owner's manual. LKA does not activate under 37 mph (60 km/h) when following another vehicle. Please reprogram the ADAS ECU.

AFFECTED VEHICLES

Certain 2022 *and* 2023 Outlander ◀

- US VIN Cut-off: JA4J4VA87PZ004394 / August 31, 2022
- PUERTO RICO VIN Cut-off: JA4J4VA87PZ004394 / August 31, 2022

IMPORTANT

To maximize customer satisfaction with the quality of their vehicle, affected new or used inventory vehicles should be remedied before the vehicle is delivered. Dealers must check their inventory vehicles' VINs on the Warranty Superscreen to verify whether the vehicle is involved in this service campaign.

CUSTOMER NOTIFICATIONS

A letter will be sent to all owners of affected vehicles requesting they schedule an appointment with their local Mitsubishi dealer. *A sample copy of the customer notification letter appears at the end of this bulletin.*

Copyright 2024, Mitsubishi Motors North America, Inc.

The information contained in this bulletin is subject to change. For the latest version of this document, go to the Mitsubishi Dealer Link, MEDIC, or the Mitsubishi Service Information website (www.mitsubishitechno.com).

REQUIRED OPERATIONS

Before starting this campaign procedure, CHECK THE WARRANTY SUPERSCREEN to verify if the vehicle is an affected VIN for this campaign and that this campaign procedure has not already been completed.

REPAIR PROCEDURE

CAUTIONS

General

- Confirm if there are any scratches on exterior and interior of the vehicle before starting the procedure. In case there is a scratch, confirm with the customer before starting the procedure.

ECU reprogramming

- Be sure to connect with battery charger for back-up power source. During ECU reprogramming, the cooling fan works due to fail safe mode. The low voltage of the auxiliary battery may cause incompleteness/failure of the reprogramming and if this happens, the ECU must be replaced with a brand new one.
- Confirm your MUT-III SE is updated with the latest reprogramming database.
- Write down all the customer's electrical device settings such as A/C and radio before reprogramming and restore them after reprogramming.
- Turn off all electrical devices to minimize the vehicle's electrical load. Also use an external power source to ensure that the vehicle battery maintains the specified voltage during reprogramming.
- Before using, make sure the USB cable and MUT-III SE main harness are not damaged.
- Connect the MUT-III to an AC power source to prevent internal battery discharge.
- Turn on flashers to prevent vehicle from shutting down/going to sleep.
- Stay away from the under hood area during reprogramming. If the connection between the engine ECU and ETACS is lost, the cooling fan operates as fail-safe.
- Check and erase All DTCs after reprogramming.

NOTE: If an affected vehicle has a Malfunction Indicator Lamp (MIL) illuminated before reprogramming, and DTCs are listed in the ECU memory, save the ALL-DTC results and then erase the codes prior to reprogramming. If hard codes are present that are applicable to the target ECU and won't clear, diagnose and repair these codes first and then proceed with reprogramming.

EQUIPMENT

The following equipment is needed to reprogram the ECU:

- VCI (Vehicle Communication Interface), VCI Lite and VCI 3
- MEDIC Laptop/Tablet with A/C power adapter
- MUT III Main Harness "A" (blue connector at the DLC end)
- USB 2.0 Cable
- MEDIC 3.5/4 update at **859** or higher
- For Standalone MUT III units, MUT-III SE Reprogramming Database SDBN N231101NR or higher

ECU REPROGRAMMING CHART

(For Software: ADAS-ECU)

Model	Data No.	New HW Part No.	New SW Part No./Ver.	Target HW Part No.	Target SW Part No./Ver.	Remarks
Outlander	284E7W07.9PN	284E7WW00P 284E7W029P	284E7W079P	284E7WW00P 284E7W029P	284E7WW00P 284E7W029P	-

REPAIR PROCEDURE

SOFTWARE/MEDIC VERSION VERIFICATION PROCEDURE

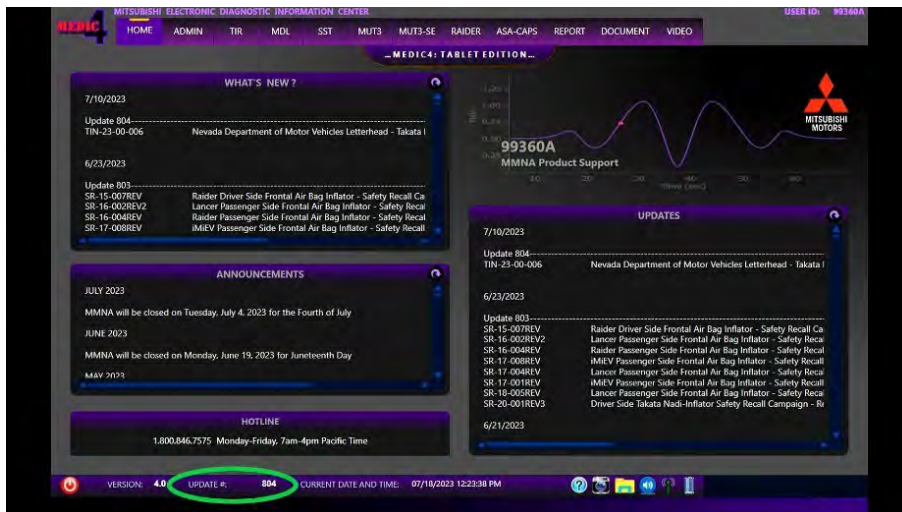
1. Verify that the ECU has not already been updated to the latest S/W number in the table above. If the ECU is at the latest level, reprogramming is not necessary.

NOTE: Reprogramming the ADAS ECU with the latest database (e.g., SDBN N231101NR includes all past and current reprogramming for TSBs of affected vehicles. It is not necessary to reprogram the ECU for each previous TSB.

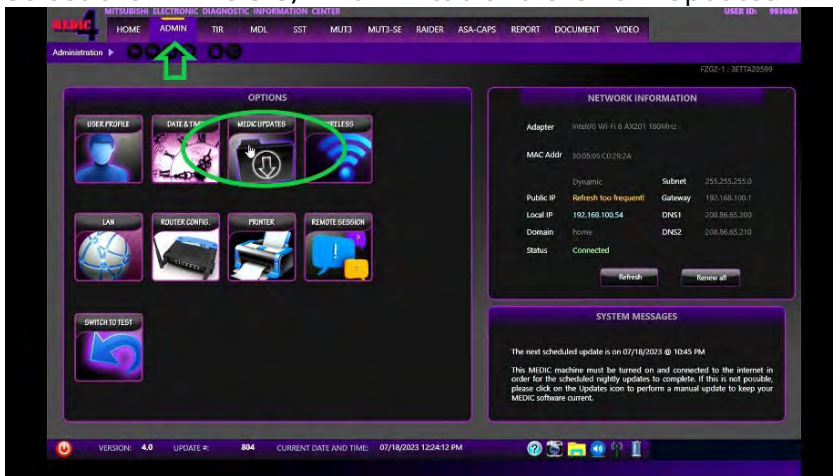
For MEDIC 3.5/4 users only: (MUT-III SEV users go to step 5)

2. Verify the MEDIC 3.5/4 is at version 3.5 and at update **859** or higher.

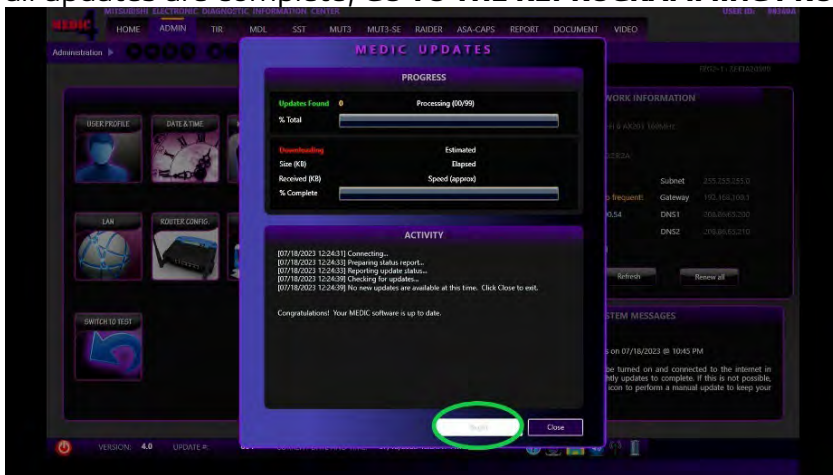
If your **MEDIC 3.5/4 update is at least 859**, continue with the Reprogramming Procedure. If your **MEDIC 3.5/4 update is below 859**, update your MEDIC as follows:



3. Select the MEDIC 3.5/4 Admin tab and click on "Updates".



4. If the MEDIC update screen advises updates are available, click the "Begin" button. After all updates are complete, **GO TO THE REPROGRAMMING PROCEDURE.**

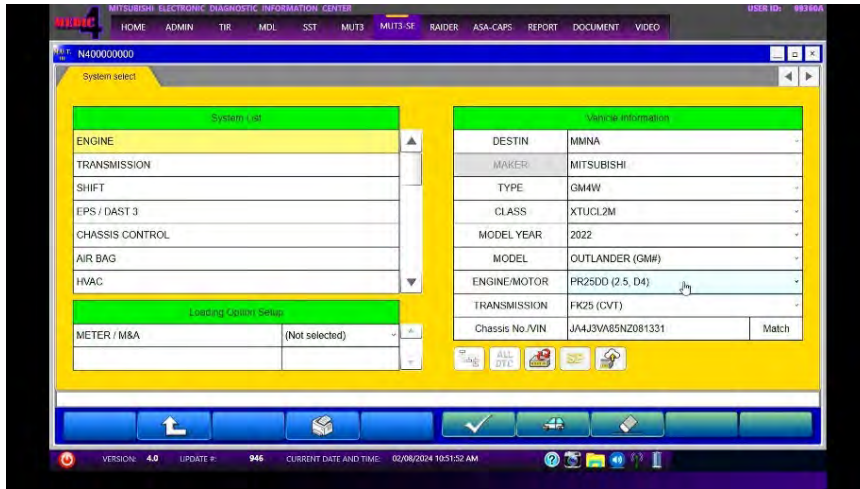


5. STANDALONE MUT-III SE SCAN TOOL VIEWER (STV) ONLY: (MEDIC 3.5 USERS – GO TO THE REPROGRAMMING PROCEDURE). Verify that your MUT-III SE has the most current version of the reprogramming database from the MUT-III SE Main Page.

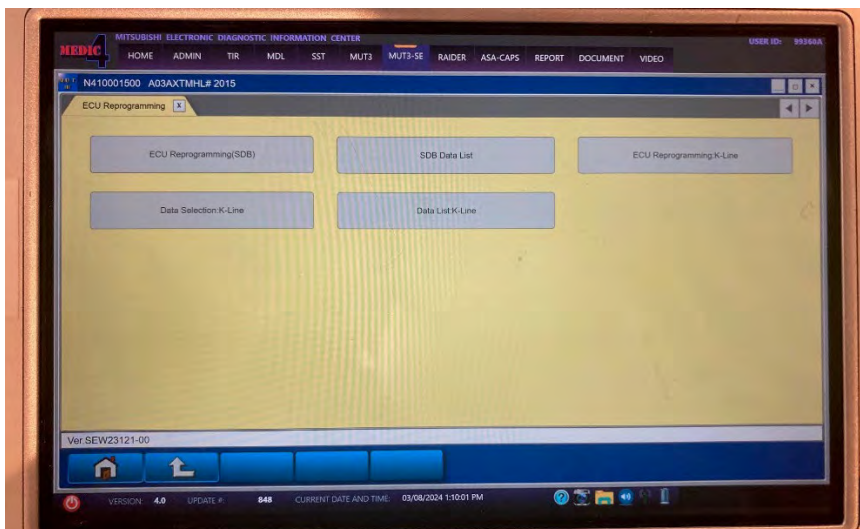
a. Press the MUT-III SE STV icon.



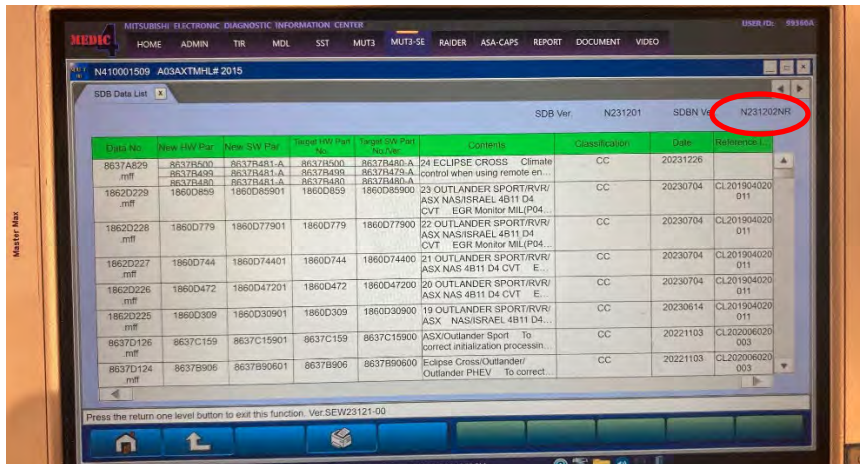
- b. Confirm the vehicle information displayed is complete/correct and press Reprogramming button.



- c. Select "SDB Data List" button.



- d. Confirm that the database number displayed (upper right) is SDBN N231101NR or higher.



REPROGRAMMING PROCEDURE

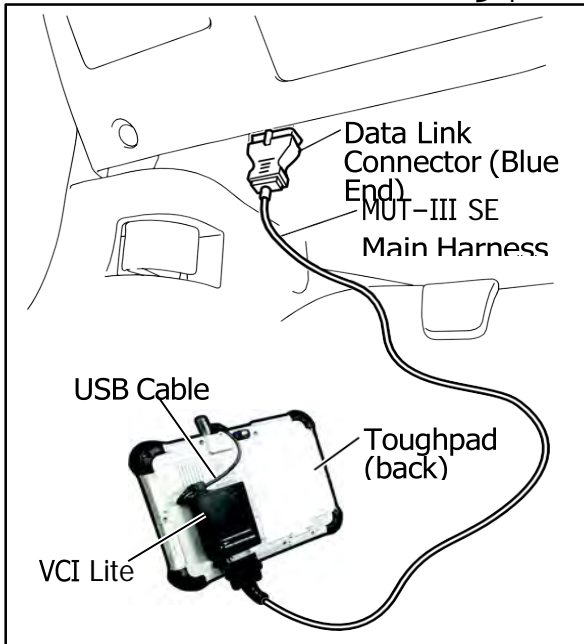


To ensure that the vehicle battery maintains 12V during the procedure, hook- up a battery charger to the vehicle during the procedure.

NOTE: VCI Stand-alone reprogramming is not available for this procedure. The laptop/tablet and the VCI must remain connected for the entire procedure.

1. Connect the equipment as follows:

NOTE: VCI Lite and MEDIC 4.0 Toughpad shown for illustration purposes only.

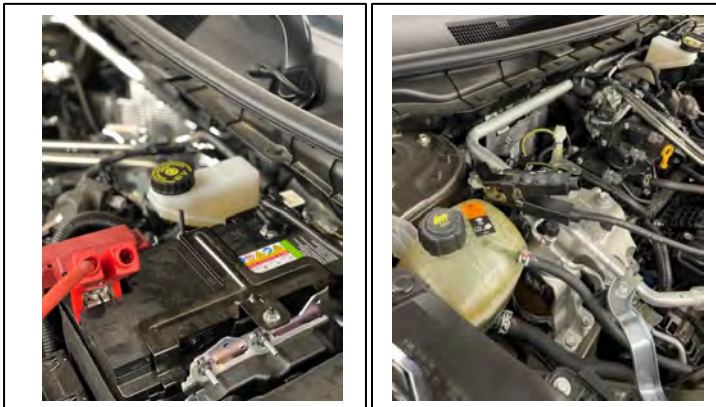


- Turn the MEDIC PC/tablet on. If the battery indicator in the lower right hand corner of the screen does not show a full charge, it is recommended that either the battery be charged prior to beginning or be used with the A/C power adaptor connected.
- Connect the USB cable to the VCI/VCI Lite. When the laptop/tablet displays the MUT-III SE main screen, connect the USB cable to the device.
- Connect the MUT-III SE main harness with the blue DLC connection to the VCI/VCI Lite. Connect the blue connection of the MUT-III SE main harness to the vehicle's data link connector.
- For VCI only: Turn the VCI power switch ON. Verify that the indicator lamp in the upper right corner of the screen is green.



DO NOT DISTURB THE HARNESS CABLES OR CONNECTIONS DURING THE REPROGRAMMING PROCESS AS IT COULD CAUSE THE CONTROL UNIT TO LOSE DATA. IF THE USB CABLE IS DISCONNECTED DURING THIS PROCEDURE, A WARNING MESSAGE WILL DISPLAY.

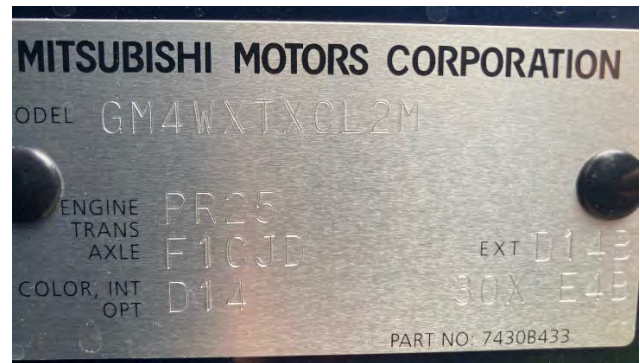
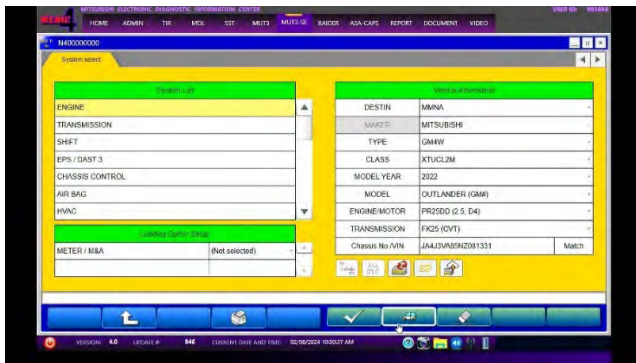
NOTE: Due to limited space it may be easiest to connect battery charger cable onto ground point.



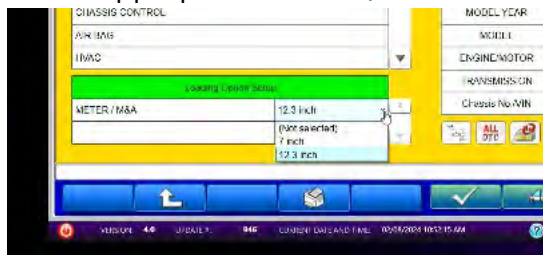
2. Turn the ignition switch to the "ON" position.
3. Turn on flashers to prevent vehicle from shutting/powering down.
4. Press the MUT-III SE STV button.



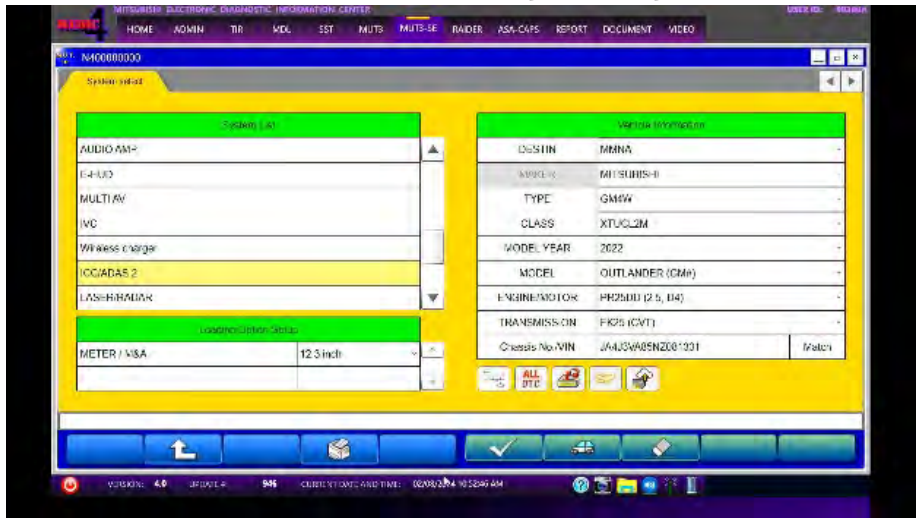
5. Press the model information display button (car icon) and verify all vehicle information. Look at the label on the passenger side B pillar to identify the appropriate class. (See B pillar label below; class is labeled as "model"). Select the correct class from the Loading Option Setup drop-down list.



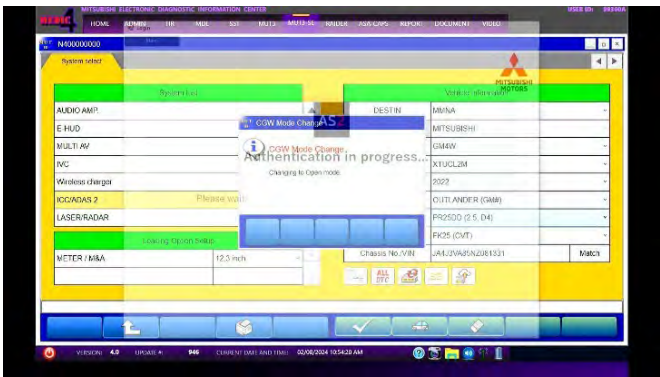
6. Verify that the ECU has not already been updated with the latest S/W number.
 - a. Select appropriate "Meter / M&A" from Loading Option Setup drop-down..



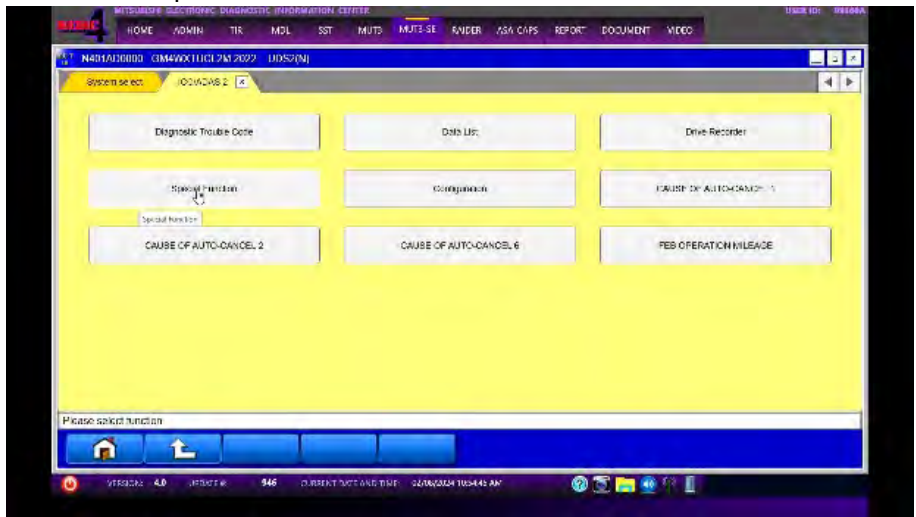
b. Select "ICC/ADAS 2" and press the programming icon button.



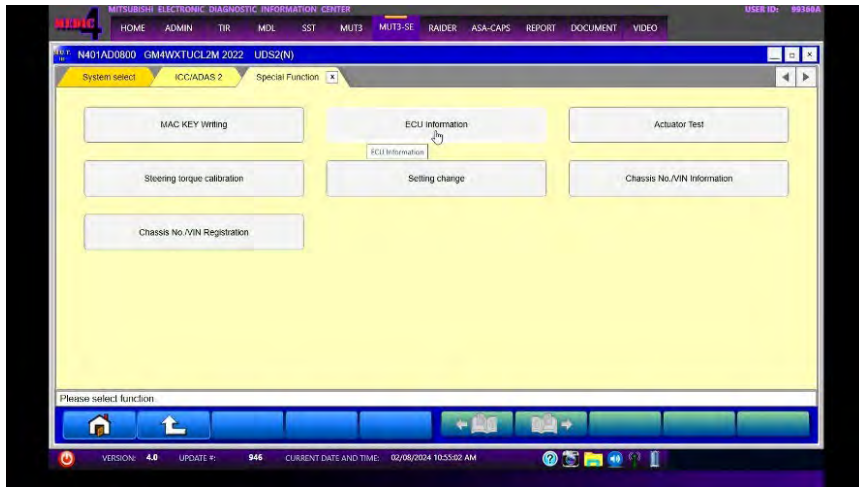
c. Log into AS2.



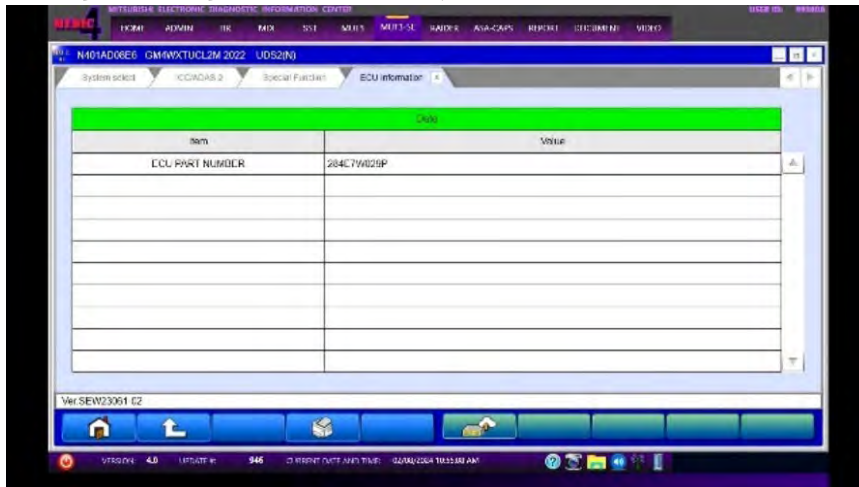
d. Press the "Special Function" button.



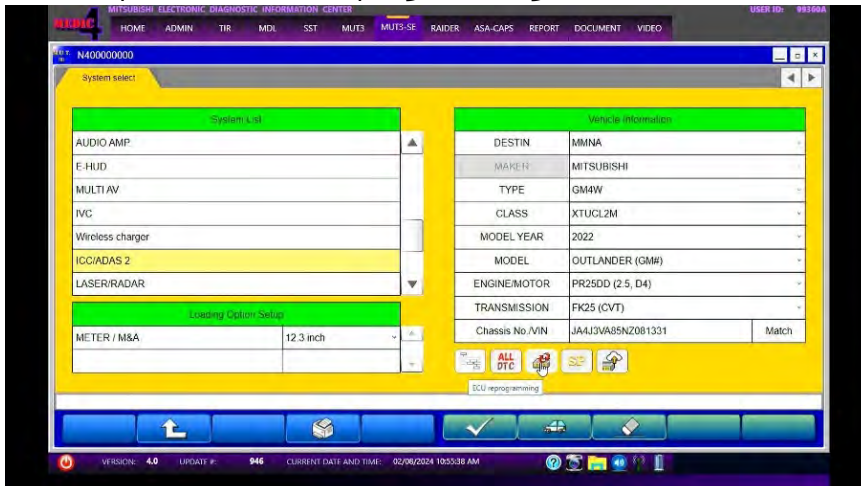
e. Select the "ECU Information" button.



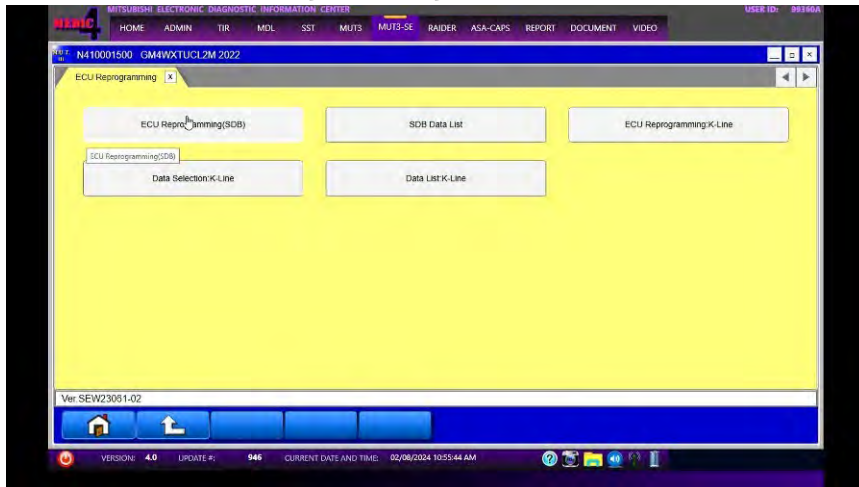
f. The current ECU Part Number will be displayed. If the ECU is at the latest level, reprogramming **is not** necessary.



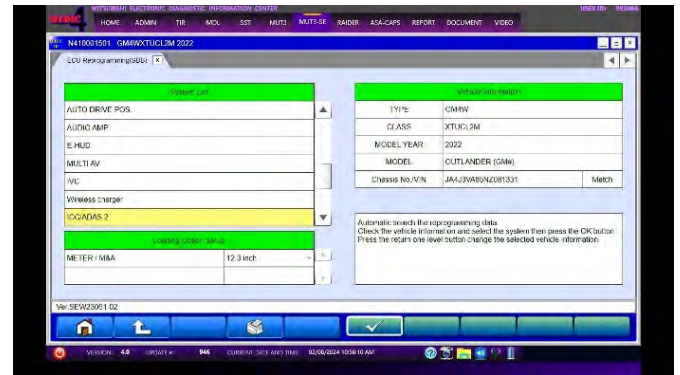
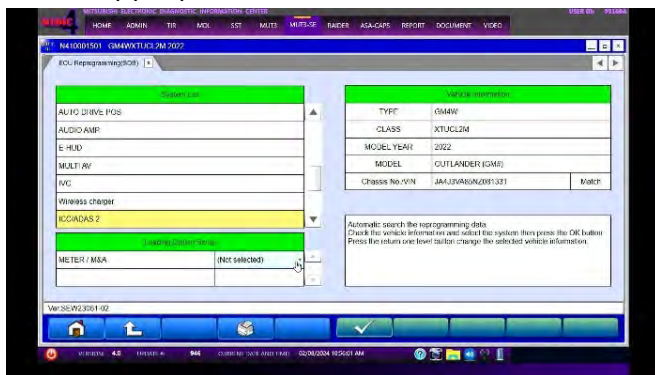
7. If reprogramming is necessary, proceed with the following steps. Return to the "System Select" tab and press the "ECU reprogramming" button.



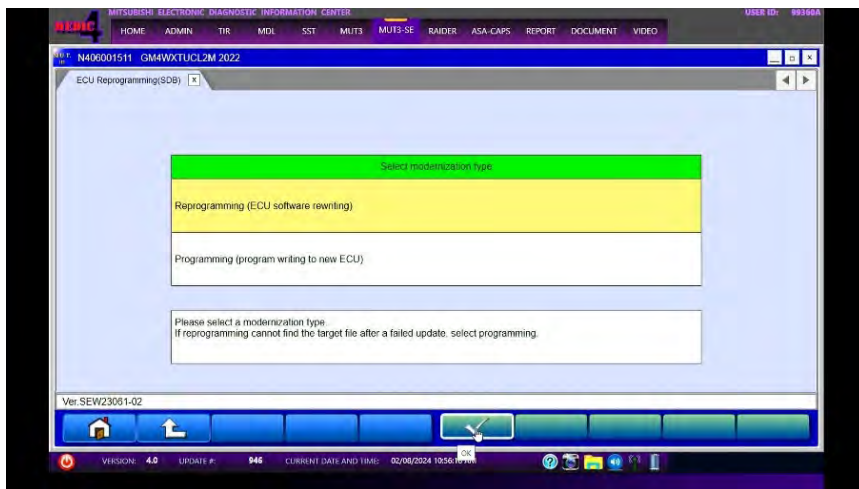
a. Select the "ECU Reprogramming(SDB)" button.



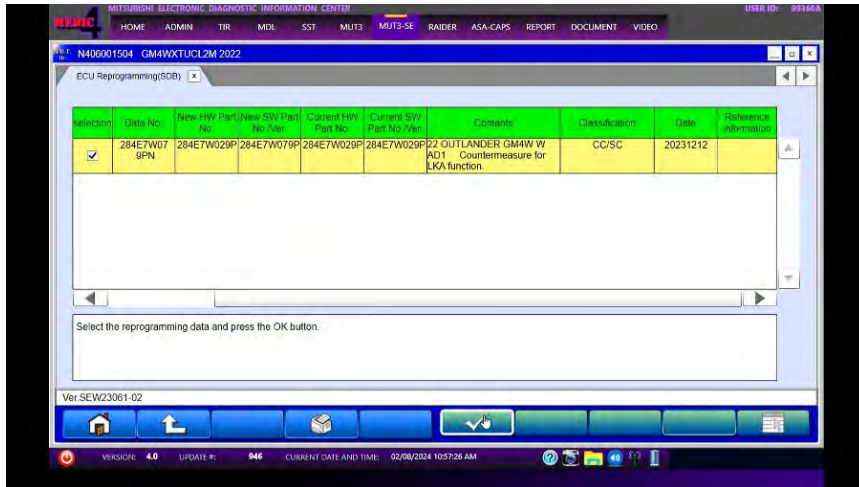
b. Select appropriate "Meter / M&A" and select the OK button.



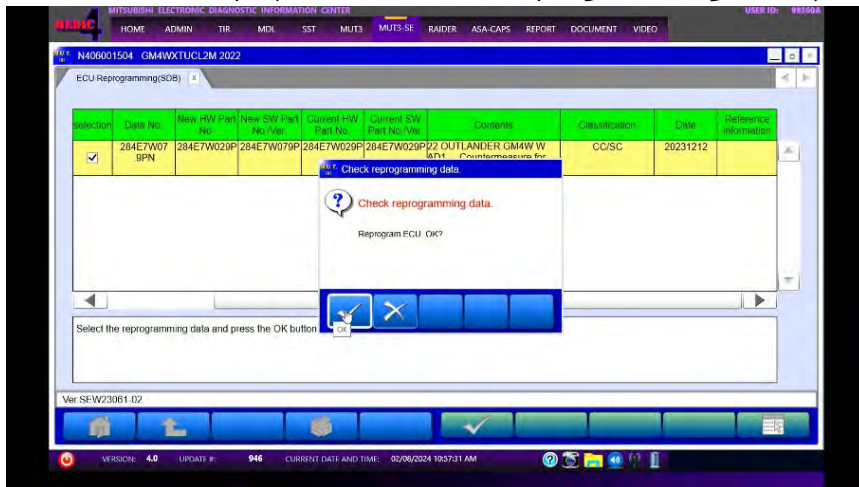
c. Select a modernization type - "Reprogramming (ECU software rewriting)" button and select the OK button.



d. Select the reprogramming data and press the OK button.

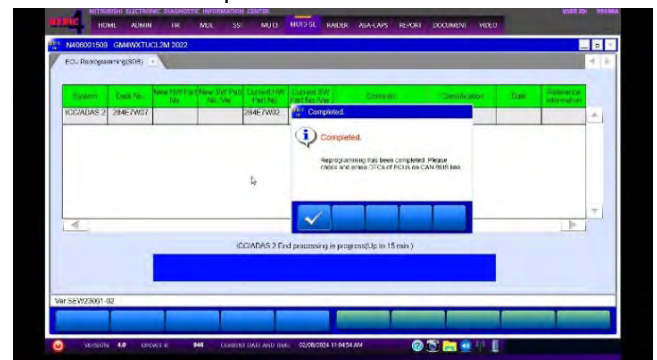
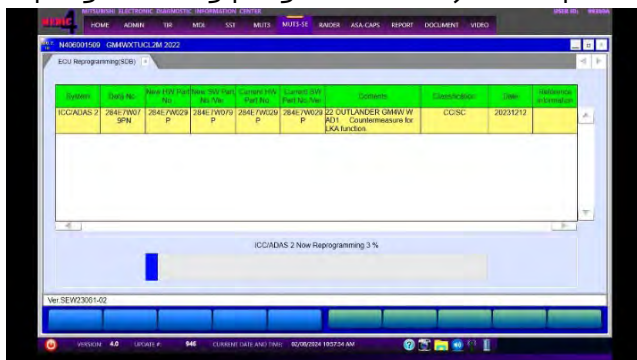


e. Confirm data displayed and confirm reprogramming ECU by selecting the OK button.

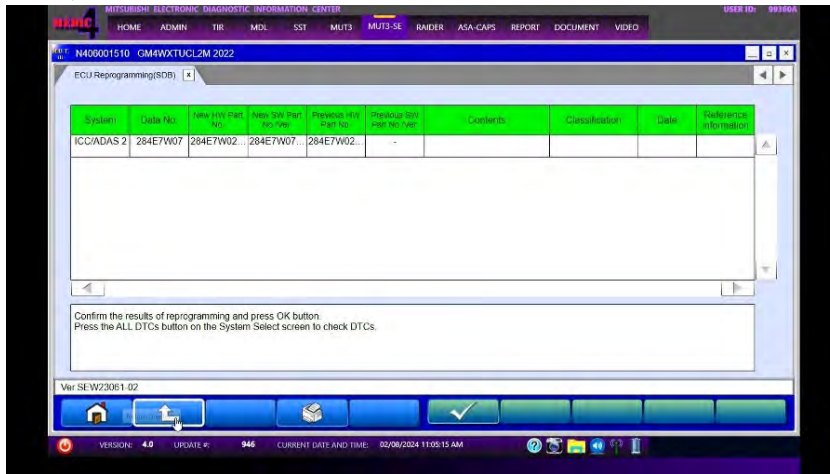


Note: Do not disturb the cable or turn off the ignition during reprogramming to prevent damage to the ECU.

f. Once the reprogramming is initiated the screen (shown below) will indicate the reprogramming progress. It may take up to 15 minutes to complete.



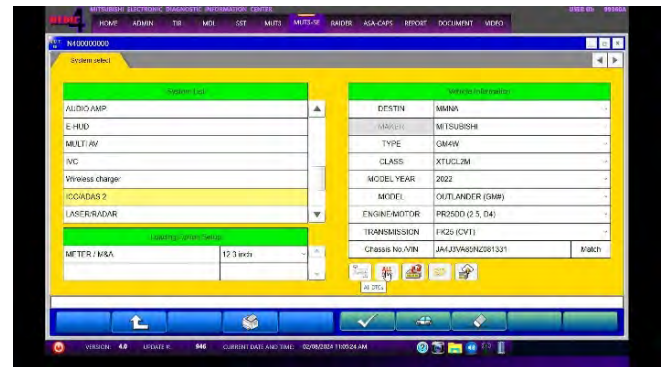
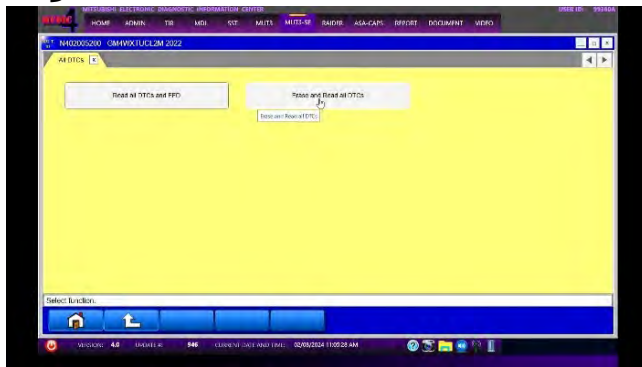
g. Verify that the software version has been updated to the new data number.



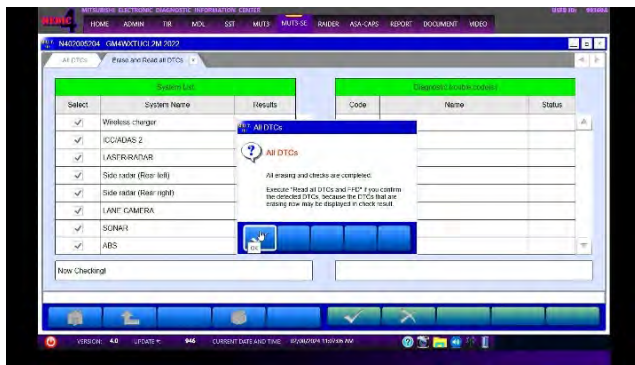
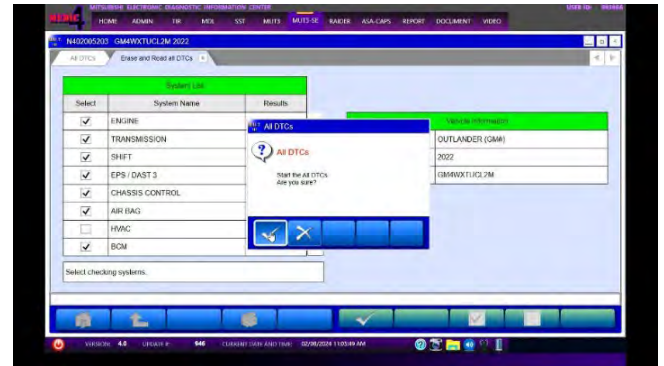
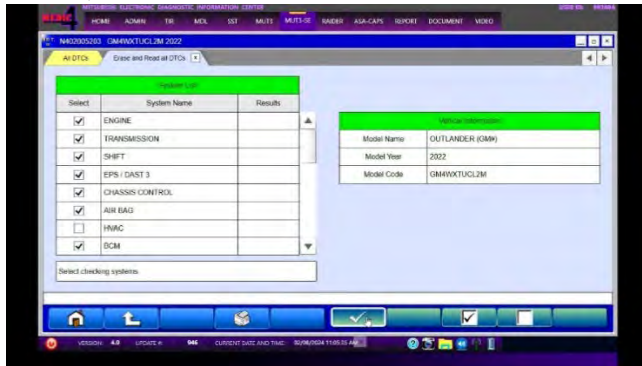
Model	Data No.	New HW Part No.	New SW Part No./Ver.	Target HW Part No.	Target SW Part No./Ver.	Remarks
Outlander	284E7W07.9PN	284E7WW00P 284E7W029P	284E7W079P	284E7WW00P 284E7W029P	284E7WW00P 284E7W029P	-

8. After updating the ADAS-ECU, turn IG-OFF for 10 seconds and then clear the DTCs in all ECUs and make sure there are no DTCs remaining.

a. Return to the System Select screen. Press " ALL DTC " button to initiate the " Erase and Read all DTCs ". **IMPORTANT: The " Erase and Read all DTCs " must be performed since DTCs may be generated and stored.**



- b. Press OK to initiate erasing all DTCs. When completed, a confirmation message will be displayed. Click the OK Button.



PARTS INFORMATION

No parts required for ADAS ECU reprogramming.

SOFTWARE REPROGRAMMING CHART

Model	Data No.	New HW Part No.	New SW Part No./Ver.	Target HW Part No.	Target SW Part No./Ver.	Remarks
Outlander	284E7W07.9PN	284E7WW00P 284E7W029P	284E7W079P	284E7WW00P 284E7W029P	284E7WW00P 284E7W029P	-

WARRANTY

Labor Op Code	Operation	Work Time	Remarks
C2402C01	ADAS ECU program update	0.3H	-
C2402C02	Miscellaneous cost	0.1H	-



MITSUBISHI MOTORS NORTH AMERICA, INC.
PO Box 689040
Franklin, TN 37068

Date: July 2024



This notice applies to your vehicle,
[VIN].

Subject: Service Campaign SC-24-001

Dear [NAME],

Mitsubishi Motors strives to build vehicles with the highest level of quality and to continuously improve that quality with every vehicle built. To help assure your continued satisfaction with your Mitsubishi vehicle, we are recommending that the following product improvement be performed on certain 2022 and 2023 Outlander vehicles.

Recommended Product Improvement:

The actual operation of Lane Keep Assist (LKA) mismatches the LKA conditions described in owner's manual. LKA does not activate under 37 mph (60 km/h) when following another vehicle. A software update will correct this situation.

What your dealer will do:

Your local Mitsubishi Motors dealer will reprogram the ADAS (Advanced Driver Assistance Systems) Electronic Control Unit (ECU) with modified software. The time needed for the reprogramming is approximately 30 minutes. The dealer may need your vehicle for a longer period of time, but every effort will be made to minimize your inconvenience.

What you should do:

Please contact your local Mitsubishi Motors dealer and schedule an appointment to have the ADAS ECU reprogrammed free of charge. When you bring your vehicle in, please show the dealer this letter. If you misplace this letter, the dealer will still perform this repair on your vehicle, free of charge.

If you experience any problem obtaining this product improvement promptly and/or at no charge, please inform us by calling the Mitsubishi Customer Relations Department at **888-648-7820**. Hours: Monday through Friday 7 a.m. to 4 p.m. (Central Time)

If you previously had your vehicle reprogrammed as a result of this specific condition and have paid for the repair, you may send your original repair order or invoice, **and** original receipt/proof of payment to the following address for reimbursement consideration:

Mitsubishi Motors North America Inc., Customer Relations, P.O. Box 689040, Franklin, TN 37068

We appreciate your prompt attention to this matter.

Sincerely,

Mitsubishi Motors North America, Inc.

C2402C