

GENERAL MOTORS
DCS6967
URGENT - DISTRIBUTE IMMEDIATELY

Date: August 7, 2024

Subject: N242469060 - Customer Satisfaction Program
NOx OBD False Positive DTCs

Models: 2022-2024 Chevrolet 4500HD/XD, 5500HD/XD Low Cab Forward
(LCF)

General Motors is releasing Customer Satisfaction Program N242469060 today.

What Should Dealers Do: Dealers should review IVH or the Dealer Maxis reports for open VINs in their inventory. Dealers can view the attached bulletin and it will also be displayed in Service Information tomorrow.

The Stock VIN list of vehicles in dealer inventory is attached to this message. Note: this list is only accurate at the time of report creation and all VINs should be validated in IVH prior to repair.

END OF MESSAGE

Customer Satisfaction Program

N242469060 NOx OBD False Positive DTCs



Release Date: August 2024

Revision: 00

Attention: ONLY Chevrolet Medium Duty dealers can complete this field action repair.
This program is in effect until August 31, 2026.

Make	Model	Model Year		RPO	Description
		From	To		
Chevrolet	4500HD/XD, 5500HD/XD Low Cab Forward (LCF)	2022	2024		

Involved vehicles are marked "Open" on the Investigate Vehicle History screen in GM Global Warranty Management system. This site should always be checked to confirm vehicle involvement prior to beginning any required inspections and/or repairs.

Condition	Certain 2022-2024 model year Chevrolet LCF 4500, 5500 HD/XD vehicles equipped with 5.2L (4HK1) diesel engines and option (IE1) 4-wheel disc brakes may erroneously experience an illuminated Check Engine Malfunction Indicator Lamp (MIL) with Diagnostic Trouble Codes (DTC) P2201 NOx Sensor Circuit Performance Sensor 1 and/or P20EE Diesel Exhaust Fluid (DEF) System NOx Trap Low Efficiency.
Correction	Dealers will reprogram the ECM and/or the DCU with the corrected service calibrations.

Parts

No parts are required for this repair.

Warranty Information

Labor Operation	Description	Labor Time	Trans. Type	Net Item
9107394*	Engine Control Module and Diesel Exhaust Fluid Control Module Reprogramming	0.8	ZFAT	N/A
9107594	Customer Reimbursement Approved - For USA and Canada dealers only - For Export dealers only	N/A 0.2	ZFAT	**
9107595	Customer Reimbursement Denied – For USA dealers only	N/A	ZFAT	***

Note: To avoid having to "H" route the customer reimbursement transaction for wholesale approval, it must be submitted prior to the repair transaction.

** For USA & Canada: Submit the dollar amount reimbursed to the Customer in Net/Reimbursement. Submit \$20.00 USD (\$25.00 CAD) administrative allowance in Net/Admin Allowance.

For Export: Submit the dollar amount reimbursed to the Customer in Net/Reimbursement.

*** Submit \$10.00 administrative allowance in Net/Admin Allowance.

Important: * To avoid warranty transaction rejections, carefully read and follow the instructions below:

Labour Time [\[Top\]](#)

Labour Operation Code:

Additional labour op code information:

SPS Warranty Claim Code:

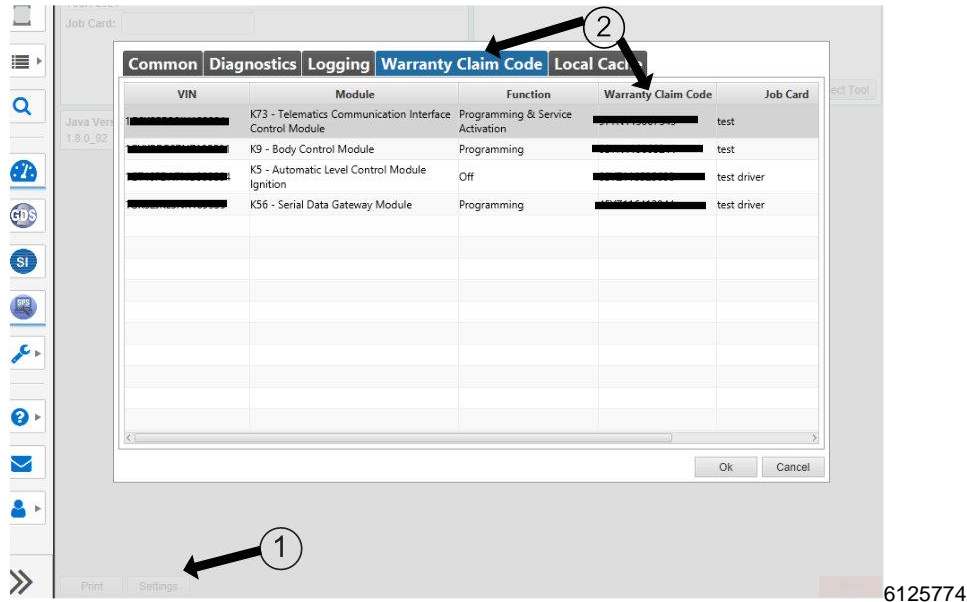
6125814

- The Warranty Claim Code from the programming event must be accurately entered in the "Warranty Claim Code" field of the transaction.



- When more than one Warranty Claim Code is generated for a programming event, it is required to document all Warranty Claim Codes in the "Correction" field on the job card. Dealers must also enter one of the codes in the "Warranty Claim Code" field of the transaction, otherwise the transaction will reject. It is best practice to enter the FINAL code provided by SPS2.

Warranty Claim Code Information Retrieval



If the Warranty Claim Code was not recorded on the Job Card, the code can be retrieved in the SPS2 system as follows:

- Open TLC on the computer used to program the vehicle.
- Select and start SPS2.
- Select Settings (1).
- Select the Warranty Claim Code tab (2).

The VIN, Warranty Claim Code and Date/Time will be listed on a roster of recent programming events. If the code is retrievable, dealers should resubmit the transaction making sure to include the code in the SPS Warranty Claim Code field.

Service Procedure

Caution: Before downloading the update files, be sure the computer is connected to the internet through a network cable (hardwired). DO NOT DOWNLOAD or install the files wirelessly. If there is an interruption during programming, programming failure or control module damage may occur.

Note: Carefully read and follow the instructions below.

- Ensure the programming tool is equipped with the latest software and is securely connected to the data link connector. If there is an interruption during programming, programming failure or control module damage may occur.
- Stable battery voltage is critical during programming. Any fluctuation, spiking, over voltage or loss of voltage will interrupt programming. Install a GM Authorized Programming Support Tool to maintain system voltage. Refer to www.gmdesolutions.com for further information. If not available, connect a fully charged 12V jumper or booster pack disconnected from the AC voltage supply. DO NOT connect a battery charger.
- Follow the on-screen prompts regarding ignition power mode, but ensure that anything that drains excessive power (exterior lights, HVAC blower motor, etc) is off.
- Clear DTCs after programming is complete. Clearing powertrain DTCs will set the Inspection/Maintenance (I/M) system status indicators to NO.

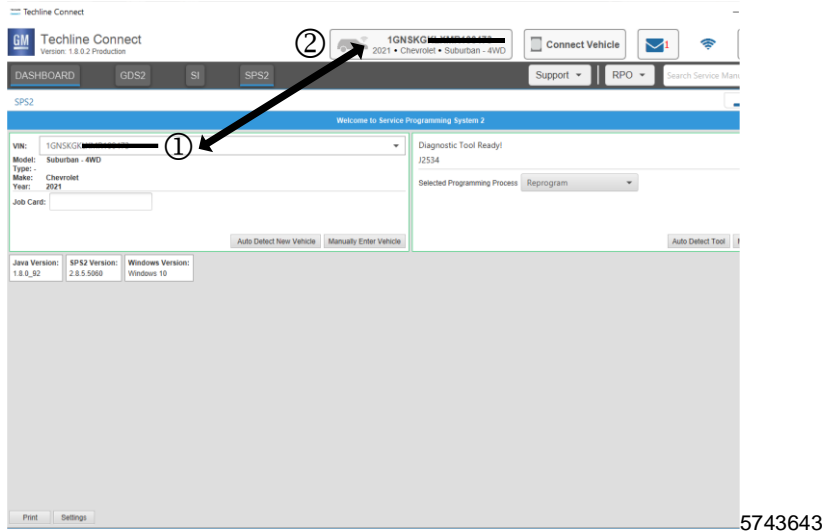
Important: The service technician always needs to verify that the VIN displayed in the TLC left side drop down menu and the top center window match the VIN plate of the vehicle to be programmed prior to using Service Programming System 2 (SPS2) for programming or reprogramming a module.

Customer Satisfaction Program

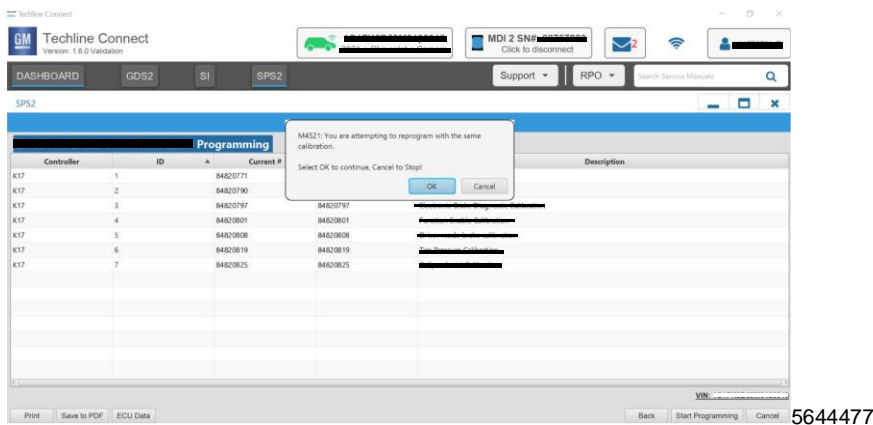
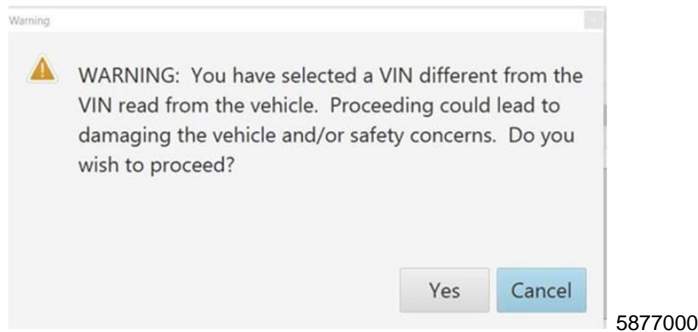
N242469060 NOx OBD False Positive DTCs



Caution: Be sure the VIN selected in the drop down menu (1) is the same as the vehicle connected (2) before beginning programming.



Important: If the vehicle VIN DOES NOT match, the message below will be shown.



Important: Techline Connect screens shown above.

Important: If the same calibration/software warning is noted on the TLC Summary screen, select OK and follow screen instructions. After a successful programming event, the WCC is located in the Service Programming System dialogue box of the SPS Summary screen. No further action is required. Refer to the Warranty section of the bulletin.

1. Bring in the vehicle and hook up the MDI 2.

Customer Satisfaction Program

N242469060 NOx OBD False Positive DTCs



Code	Controller Name
ABS	Anti-Lock Brake Control Module
DEF	Diesel Exhaust Fluid Control Module
ECM	Engine Control Module
FMS	FMS CAN Interface Control Module (If Equipped)
FCM	Frontview Camera Module
INJ	Fuel Injector Flow Rate
MMU	Mimamori Module
TCM	Transmission Control Module
OPT	Vehicle Options

Select Function/Sequence

Prepare Control Module for Removal

Programming

Setup and Configuration

Write Engine Serial Number

Glow Plug Control Module Reset

Select Programming Type

Normal

VCI

6709821

2. Reprogram the Engine Control Module, following all on-screen instructions.

Code	Controller Name
ABS	Anti-Lock Brake Control Module
DEF	Diesel Exhaust Fluid Control Module
ECM	Engine Control Module
FMS	FMS CAN Interface Control Module (If Equipped)
FCM	Frontview Camera Module
INJ	Fuel Injector Flow Rate
MMU	Mimamori Module
TCM	Transmission Control Module
OPT	Vehicle Options

Select Function/Sequence

Prepare Control Module for Removal

Programming

Setup

Data Reset

All Data Reset

Select Programming Type

Normal

VCI

6709825

3. Reprogram the Diesel Exhaust Fluid Control Module, following all on-screen instructions.

GM Techline Connect
Version: 1.6.0 Validation

DASHBOARD GDS2 SI SPS2 Support RPO Search Service Manuals

SPS2 Warranty Claim Code

Programming Complete.
VIN: [REDACTED]
2020-08-19 12:23:43 PM

Card: 1
Warranty Claim Code: 28YN46808556

Confirm programming has been completed. Incorrect or missing Warranty Claim Codes may result in rejection of warranty claim. Warranty claim codes for prior VINs serviced may be retrieved through "Settings" at SPS start page. Record this code on the warranty repair order (if applicable).

Post Programming Instructions:
Follow the Controller Specific Instructions below.
If there are no Controller Specific Instructions, turn ignition off for 30 seconds to reset the controller.

5644478

Note: The screenshot above is an example of module programming and may not be indicative of the specific module that is being programmed. Module selection and VIN information have been blacked out.

Important: To avoid warranty transaction rejections, you **MUST** record the warranty claim code provided on the Warranty Claim Code (WCC) screen shown above on the job card. Refer to callout 1 above for the location of the WCC on the screen.

Customer Satisfaction Program

N242469060 NOx OBD False Positive DTCs



- Record the **Engine Control Module** SPS Warranty Claim Code on job card for warranty transaction submission. Put the warranty claim code for the Diesel Exhaust Fluid Control Module in the notes section.

Dealer Responsibility

All new, used, GM Certified Pre-Owned (CPO), courtesy transportation vehicles, dealer shuttle vehicles, CarBravo, etc. in dealers' possession and subject to this field action must be held and inspected/repaired per the service procedure of this bulletin before customers take possession of these vehicles. Involved vehicles must be held and not delivered to customers, dealer-traded, released to auction, used for demonstration, or any other purpose.

All GM Certified Pre-Owned (CPO) vehicles currently in the dealers' inventory within the SHIFT Digital system will be de-certified and must be held and remedied per the service procedure in this bulletin. Upon submitting an accepted/paid warranty transaction in the Global Warranty Management (GWM) system, the vehicle can be re-certified for sale within the SHIFT Digital system, or once again be used in the Courtesy Transportation Program.

Dealers are to service all vehicles subject to this program at no charge to customers, regardless of mileage, age of vehicle, or ownership, through August 31, 2026. Customers who have recently purchased vehicles sold from your vehicle inventory, and for which there is no customer information indicated on the involved vehicle listing, are to be contacted by the dealer. Arrangements are to be made to make the required correction according to the instructions contained in this bulletin. A copy of the customer letter is provided in this bulletin for your use in contacting customers. Program follow-up cards should not be used for this purpose, since the customer may not as yet have received the notification letter.

In summary, whenever a vehicle subject to this program enters your vehicle inventory or is in your facility for service through August 31, 2026, you must take the steps necessary to be sure the program correction has been made before selling or releasing the vehicle.

Dealer Reports – For USA & Export

For dealers with involved vehicles, a listing has been prepared and will be available through GM GlobalConnect Maxis Field Action Reports or sent directly to export dealers. The Inventory tab of the dealer reports will contain VINs that apply to this field action. This information is intended to assist dealers with the **PROMPT COMPLETION** of these vehicles. The Customer In-Service tab will contain customer names and addresses from Motor Vehicle Registration Records. The use of such motor vehicle registration data for any purpose other than follow-up necessary to complete this field action may be a violation of law in several states.

Customer Notification

USA & Canada - General Motors will notify customers of this program on their vehicle (see copy of customer letter included with this bulletin).

Export - Letters will be sent to known owners of record located within areas covered by the US National Traffic and Motor Vehicle Safety Act. For owners outside these areas, dealers should notify customers using the attached sample letter.

Customer Reimbursement

Customer requests for reimbursement of previously paid repairs to correct the condition described in this bulletin are to be submitted to the dealer prior to or by August 31, 2025. See General Motors Service Policies and Procedures Manual (USA & Canada) or local Policies and Procedures, for details.

GM bulletins are intended for use by professional technicians, NOT a "do-it-yourselfer". They are written to inform these technicians of conditions that may occur on some vehicles, or to provide information that could assist in the proper service of a vehicle. Properly trained technicians have the tools, equipment, safety instructions, and know-how to do a job properly and safely. If a condition is described, **DO NOT** assume that the bulletin applies to your vehicle, or that your vehicle will have that condition. See your dealer for information on whether your vehicle may benefit from the information.



We Support
Voluntary Technician
Certification

Customer Satisfaction Program

N242469060 NOx OBD False Positive DTCs



August 2024

This notice applies to your vehicle, **VIN:** _____

Dear General Motors Customer:

We have learned that your 2022-2024 model year Chevrolet 4500HD/XD, 5500HD/XD Low Cab Forward (LCF) may erroneously experience an illuminated Check Engine Malfunction Indicator Lamp (MIL) with Diagnostic Trouble Codes (DTC) P2201 NOx Sensor Circuit Performance Sensor 1 and/or P20EE Diesel Exhaust Fluid (DEF) System NOx Trap Low Efficiency.

Your satisfaction with your Chevrolet 4500HD/XD, 5500HD/XD Low Cab Forward (LCF) is very important to us, so we are announcing a program to prevent this condition or, if it has occurred, to fix it.

What We Will Do: Your GM dealer will reprogram the ECM and/or the DCU with the corrected service calibrations. This service will be performed for you at **no charge until August 31, 2026**. After that, any applicable warranty will apply.

What You Should Do: To limit any possible inconvenience, we recommend that you contact your dealer as soon as possible to schedule an appointment for this repair. By scheduling an appointment, your dealer can ensure that the necessary parts will be available on your scheduled appointment date. When scheduling your appointment, confirm with the dealer that they service Medium Duty Trucks.

Reimbursement: Even though you may have previously had repairs for this condition, you will still need to take your vehicle to your dealer for additional repairs. If you have already paid for repairs for the condition described in this letter, **and those repairs were completed prior to this mailing**, please complete the enclosed reimbursement form and present it to your dealer with all required documents. Working with your dealer will expedite your request, however, if this is not convenient, you may mail the completed reimbursement form and all required documents to Reimbursement Department, PO Box 33170, Detroit, MI 48232-5170. The completed form and required documents must be presented to your dealer or received by the Reimbursement Department by August 31, 2025, unless state law specifies a longer reimbursement period.

If you have any questions or concerns that your dealer is unable to resolve, please contact the appropriate Customer Assistance Center at the number listed below.

For the hearing or speech impaired, please contact our Customer Assistance Center using the Telecommunication Relay Service by dialing 711 then providing the appropriate Customer Assistance Center number for your vehicle.

Division	Number
Chevrolet	1-800-222-1020
Puerto Rico – English	1-866-467-9700
Puerto Rico – Español	1-866-467-9700
Virgin Islands	1-866-467-9700

We truly appreciate you taking the time to update your vehicle as we know your time is valuable. We want you to know that we will do our best, throughout your ownership experience, to ensure that your Chevrolet 4500HD/XD, 5500HD/XD Low Cab Forward (LCF) vehicle provides you many miles of enjoyable driving.

Neelie O'Connor
Global Executive Director
Customer Experience Operations

Enclosure
N242469060