



Technical Service Bulletin

GROUP	NUMBER
CAMPAIGN	24-01-053G
DATE	MODEL(S)
JULY 2024	G80 (RG3)

SUBJECT: QR CODE LABEL ATTACHMENT (SERVICE CAMPAIGN P09G)

★ IMPORTANT

Retailers must perform this service campaign on all affected vehicles prior to retail delivery to a guest and whenever an affected vehicle is in the shop for any maintenance or repair.

Access the “Vehicle Information” screen via WebDCS to identify open campaigns.

Description: This bulletin provides instructions to attach a QR code label to the lower B pillar right above the VIN label.

Applicable Vehicles (Certain): 2024MY G80 (RG3) produced from 01/08/2024 – 01/09/2024 with specified VINs below:

- KMTGA4SCDRU228048
- KMTGB4SDDRU228047
- KMTGA4SCDRU228020
- KMTGB4SDDRU228061
- KMTGB4SDDRU228056
- KMTGB4SCDRU228052
- KMTGB4SDDRU228024
- KMTGB4SDDRU227854
- KMTGB4SCDRU227713

Warranty Information:

Model	Op. Code	Operation	Op. Time	Causal Part	Nature Code	Cause Code
G80 (RG3)	P09GQRC1	QR Code Sticker Attachment	0.2 M/H	NTF00-00000	Q55	ZZ7

NOTE 1: Submit claim on Claim Entry Screen as “Campaign” type.

NOTE 2: If a part is found in need of replacement while performing this campaign and the affected part is still under warranty, submit a separate claim using the same repair order. If the affected part is out of warranty, submit a Prior Approval request for goodwill consideration prior to performing the work.

NOTE 3: This TSB includes Repair validation photos. Op times include VIN, Mileage, and Repair validation photo(s) as outlined in the Digital Documentation Policy.

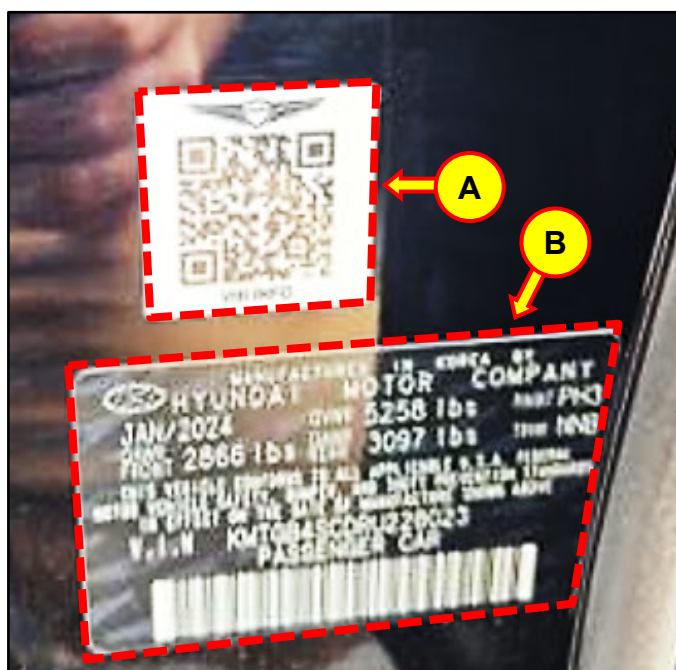
Service Procedure:**STUI**

This TSB includes Repair validation photos. Refer to the latest Warranty Digital Documentation Policy for requirements.

1. Open the driver side front door.
2. Use a clean, dry cloth to remove all dust or residue from the lower B pillar.
3. Carefully attach the QR code label (A) to the lower B pillar right above the VIN label (B) as shown in the image.

NOTICE

The QR code label will **NOT** adhere properly if removed and reattached.



4.

STUI

Using STUI, take a photo of the QR Code with the last 6 digits of the VIN visible on the VIN label.

Upload the photo to STUI.

