



01-19-05TT - Engine Crank, No Start or No -J623- Engine-Motor Control Module Communication, with DTC U0100 Stored in ECM

Release date: 7/11/2024

Condition

ATTENTION:

THIS IS A TECH TIP, NOT A TECHNICAL BULLETIN.

TECH TIPS ARE NOT ASSOCIATED WITH WARRANTY CLAIMING.

Applicable Vehicles					
Model(s)	Year	Eng. Code	Trans. Code	VIN Range From	VIN Range To
Arteon, Atlas, Jetta, Golf, GTI, Sportwagen, Beetle, Beetle Convertible, Passat, Tiguan, Tiguan LWB	2018-2019	All	All	All	All
Arteon, Atlas, Atlas Cross Sport, GTI, Golf R, Jetta, Tiguan LWB	2020-2023	All	All	All	All
Taos	2022-2024	All	All	All	All
Atlas, Atlas Cross Sport, GTI, Golf R, Jetta, Taos, Tiguan LWB	2024	All	All	All	All

Revision Table			
Instance Number	Published Date	Version Number	Reason For Update
2054867/7	7/11/24	01-19-05TT	Include an additional model & model year applicability.
2054867/5	2/22/24	01-19-05TT	Include an additional model & model year applicability.
2054867/4	11/5/21	01-19-05TT	Include an additional step to check fuse SB9 during the procedure.
2054867/3	9/5/19	01-19-05TT	Update effected vehicles
2054867/2	4/29/19	01-19-05TT	Add figures 1 and 2.
2054867/1	4/26/19	01-19-05TT	Original publication.



01-19-05TT - Engine Crank, No Start or No -J623- Engine-Motor Control Module Communication, with DTC U0100 Stored in ECM

Release date: 7/11/2024

Technical Background

DTC	Description
U0100	Lost Communication with ECM/PCM

When disconnecting the Battery during service, the -J623- (ECM) may become internally shorted as a result of the Positive Battery Terminal grounding out on the ECM case. DTC U0100 may set, as well as an engine crank with no start condition.

Service

When disconnecting or replacing a Battery, the Repair Manual procedure outlined in Elsa must be followed in its entirety. See Repair Manual Group 27. The Battery Ground Cable must always be disconnected prior to the Battery Positive Cable. Failure to do so may result in internal ECM damage.

Also check fuse SB9 for ignition coils to see if it is open. If the fuse is open it will need to be replaced.



Figure 1

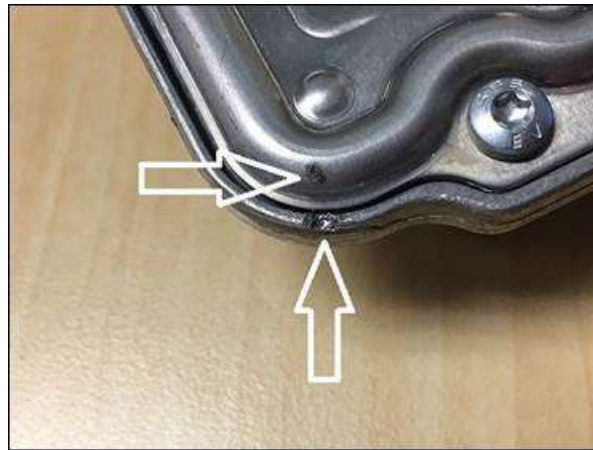


Figure 2

Additional Information

© 2024 Volkswagen Group of America, Inc. All rights reserved. Information contained in this document is based on the latest information available at the time of printing and is subject to the copyright and other intellectual property rights of Volkswagen Group of America, Inc., its affiliated companies and its licensors. All rights are reserved to make changes at any time without notice. No part of this document may be reproduced, stored in a retrieval system, or transmitted in any form or by any means, electronic, mechanical, photocopying, recording, or otherwise, nor may these materials be modified or reposted to other sites, without the prior expressed written permission of the publisher.