

**Y1A - Homelink® Garage Door Opener Configuration Inoperable**

**Vehicles Affected**

Models	Model Year	Model Type	VIN Range	Vehicle-Specific Equipment
Taycan	As of 2020	Y1A, Y1B, Y1C	N/A	N/A

**Revision History**

Revision	Release Date	Changes
0	June 25, 2024	Original document
1	July 29, 2024	Update of Service Information & Warranty

**Condition**

Customer states the Homelink® profiles have been erased and programming process has been changed (doesn't match the vehicle) to no longer be possible. (This ATI applies to the concern shown in Figure 2.)

**Technical Background**

There is a conflict in the PCM software that has changed the Homelink® GDO programming process to be representative of a different model. There are no fault codes associated with this issue. Refer to the images below for the correct & incorrect programming procedures.

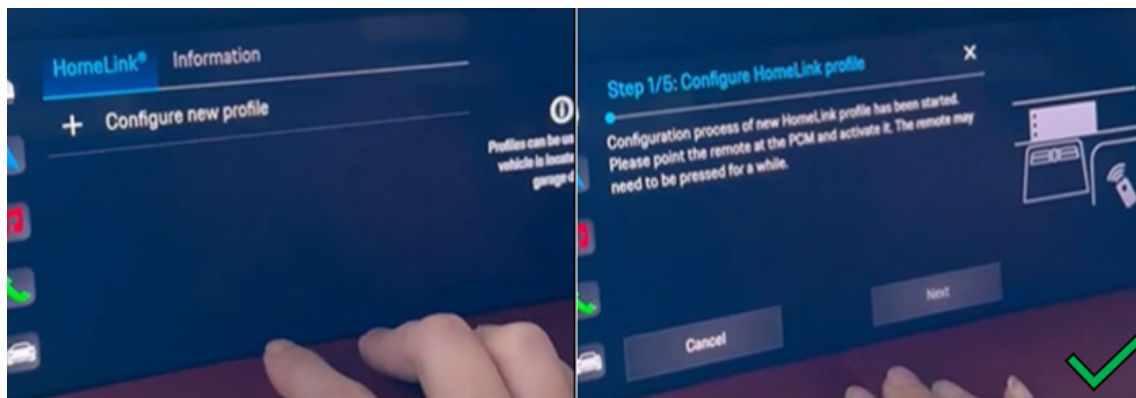


Figure 1 - Correct Programming Procedure

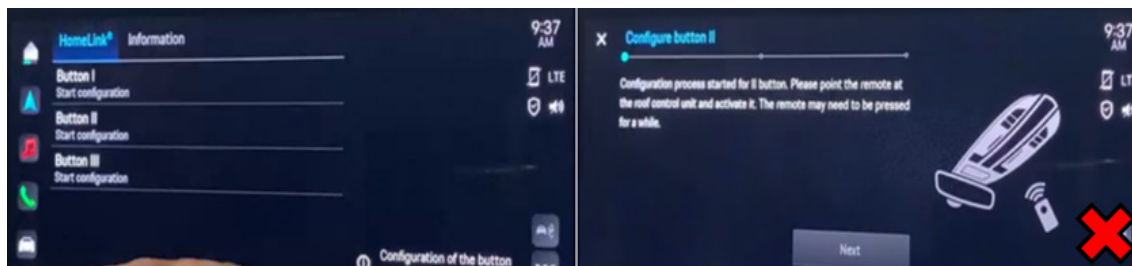


Figure 2 - Incorrect Programming Procedure

**Service Information**

1. Verify the customer's concern of the incorrect programming procedure (refer to figures 1 & 2).
2. Create a Pre-VAL.
3. With the PIWIS Tester, at software version 42.800.020 (or higher), perform auto-coding of the front-end electronics control unit (BCM1).
4. Create a Post-VAL.
5. Verify the programming procedure has been corrected.

**Warranty**

For documentation and warranty invoicing, enter the working position and PCSS encryption specified below in the warranty claim:

APOS	Labor operation	I No.
03350050	On board diagnostic	
03350053	On board diagnostic (Pre-VAL)	
94492599*	Front-end electronics control unit auto-coding	
03350063	On board diagnostics (Post-VAL)	

\*20 TU may be claimed for 94492599.

PCSS encryption:

Location (FES5)	96790	CU for garage door opener
Damage type (SA4)	1134	Programming error

### Search Items

Taycan, HomeLink, Garage door opener

**Important Notice:** Technical Bulletins issued by Porsche Cars North America, Inc. are intended only for use by professional automotive technicians who have attended Porsche service training courses. They are written to inform those technicians of conditions that may occur on some Porsche vehicles, or to provide information that could assist in the proper servicing of a vehicle. Porsche special tools may be necessary in order to perform certain operations identified in these bulletins. Use of tools and procedures other than those Porsche recommends in these bulletins may be detrimental to the safe operation of your vehicle, and may endanger the people working on it. Properly trained Porsche technicians have the equipment, tools, safety instructions, and know-how to do the job properly and safely. Part numbers listed in these bulletins are for reference only. The work procedures updated electronically in the Porsche PIWIS diagnostic and testing device take precedence and, in the event of a discrepancy, the work procedures in the PIWIS Tester are the ones that must be followed.