



**IMPORTANT SERVICE
INFORMATION FOR:**

- ✓ SERVICE MANAGER
- ✓ SERVICE ADVISOR
- ✓ PARTS DEPARTMENT
- ✓ WARRANTY PERSONNEL

BULLETIN NUMBER:
WB24-J-001

ISSUE DATE:
AUGUST 2024

GROUP:
FUEL

NEW REQUIREMENTS FOR F-SERIES FUEL TANK REPLACEMENT CLAIMS

AFFECTED VEHICLES

- 2022-2025MY Isuzu F-Series

INFORMATION

This bulletin describes certain additional requirements when submitting a regular warranty or Parts warranty claim for fuel tank replacement (Labor Operation Code L1281) on 2022-2025MY Isuzu F-Series vehicles.

REQUIRED INFORMATION

All fuel tank replacement warranty claim submissions **must** include digital photographs of the following items:

- Manufacturer Label (Figure 1 indicates the location of the label, Figure 2 shows an example photograph of the label with the serial number and manufacturing date clear and legible)
- Failure/defect location.

NOTE: All photographs should be clear, legible, in color, and in .jpg format

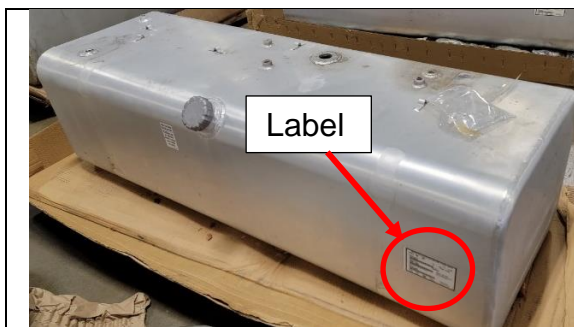


Figure 1

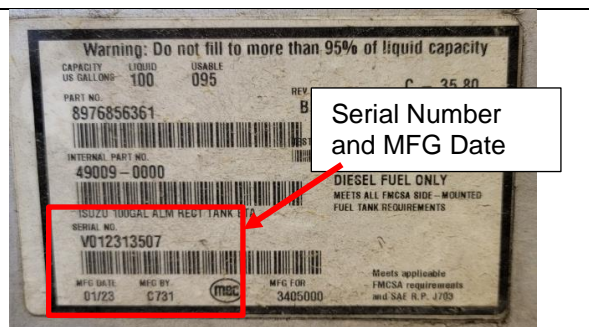


Figure 2

CLAIM SUBMISSION

Dealers may submit an additional 0.3 Hours of labor for the time necessary to take and attach these photographs to the warranty claim.