

PCM3.1 - Navigation Update (Data Status 2021) 981

Change overview

Version	Date	Note
1	03/07/2022	First publication
2	07/05/2024	Note concerning vehicle production date added

Information: **New maps with data status 2021**

Model Year: **As of 2012 up to 2016**

Note: Only available for vehicles with PCM from week 45/2012.

Restrictions: **ONLY** approved for the respective markets.

Precondition: The following are necessary so that the new navigation data can be stored on the PCM3.1 hard drive:

- System version **3.42/4.52¹** on PCM3.1. If not: Update PCM3.1 using system software PCM3.1 Multimedia Update Disk (supplied).
- License key (supplied) in order to generate the enabling code in the PIWIS information system.
- The relevant workshop DVD (for Part Nos., see Workshop DVD).

¹ Depending on the current system version, PCM3.1 is updated either to system version 3.42 or 4.52 using the system software PCM3.1 Multimedia Update Disk.

Ordering process:

ONLY for saving an additional navigation database:
 If additional navigation data (e.g. America) is to be saved instead of the standard navigation data (e.g. Europe = I-no. 610), the relevant additional equipment number (e.g. I-no. 615 = Navigation Software North America) must be assigned to the vehicle.
 You can get PCNA to assign this number by providing the following data:

- Part number of retrofit kit
- Vehicle identification number (VIN) of the vehicle to be converted
- Order number used for ordering parts

IMPORTANT:
 If you do not have the necessary data or if the data you have is incorrect, you **CANNOT** generate the PCM navigation map material enabling code yourself using the supplied license key.
 Once the order is confirmed, the additional equipment number can be found in the vehicle information for the vehicle to be converted in the PIWIS information system in the Porsche Partner Network (PPN).

**Information**

Opening the package and saving the navigation data to PCM implies acceptance of the terms and conditions of the license.

Parts Info: **997.044.909.91** ⇒ License key for PCM3.1 navigation map material 2021 – America

Workshop DVD: **ONLY** order at the same time (for the relevant country/region/market) if not yet available in the workshop.

997.044.993.60 PCM 3.x Navigation Database – America

Customer information:

The customer can select the navigation database for PCM3.1 as follows:
Navi → Options → Set Navi → Download database → Change database → Select database → Confirmation (Yes) → PCM is reset automatically (see also ⇒ *Figure 1*).

**Information**

Please inform the customer of this accordingly.



Figure 1

Tools: **P90999 - PIWIS Tester 4**

Installing: 1 Preparatory work

1.1 Generate the "PCM navigation map material enabling code" in the "PIWIS Information System". To do this, select the following windows one after the other:

1.1.1 Vehicle identification

Enter the vehicle identification number in the "Identification via VIN" field and then select "Vehicle code information".

1.1.2 "License key" entry

- 1 - License key input field
- 2 - "Check license key" field

Enter the license key in the input field (⇒ *Figure 2-1-*).

Activate the "Check license key" field (⇒ *Figure 2-2-*) by clicking with the mouse.

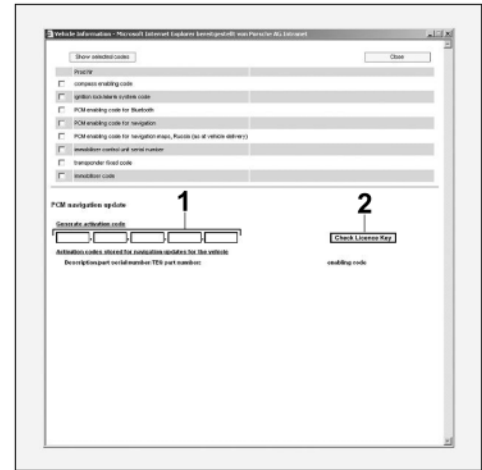


Figure 2

1.1.3 Generate PCM code.

- 3 - Map material/standard part number/TEQUIPMENT part number
- 4 - Information: License key can be used only once
- 5 - "Generate PCM code" field

After checking the license key, the related map material/standard part number/TEQUIPMENT part number (⇒ *Figure 3-3-*) appears.

A message also appears informing you that the license key can ONLY be used once and will then become unusable (⇒ *Figure 3-4-*).

Click on the "Generate PCM code" field to enable it (⇒ *Figure 3-5-*).

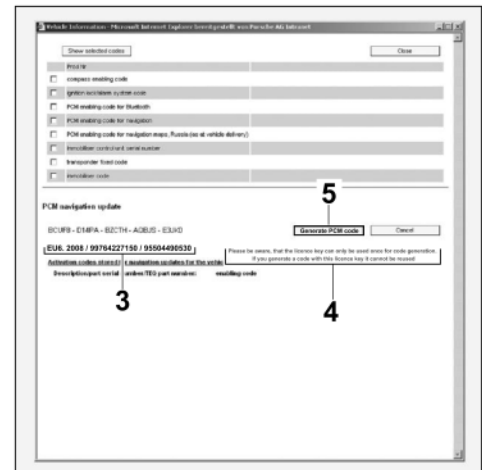


Figure 3

1.1.4 Take note of the enabling code.

6 – “Enabling code” field

Take a note of the enabling code shown (⇒ *Figure 4-6-*).

1.2 Connect battery charger (⇒ *Workshop Manual '2X00IN Battery trickle charging*).

1.3 Check that system version **3.42/4.52** is installed in PCM3.1.

1.3.1 Switch on ignition and PCM3.1.

1.3.2 Press the “INFO” and “SOURCE” buttons at the same time. Is system version 3.42 or 4.52 displayed after a short time?

Yes: Activate the navigation software; continue with Step 2.

No: Update PCM3.1 to system version 3.42/4.52; continue with Step 1.4.

1.4 Update PCM3.1 to system version 3.42/4.52.

NOTICE

Equipment/media on PCM

- **Problems or error messages during software update**

⇒ **Disconnect any equipment/media (iPod, USB player, etc.) connected to PCM before starting the update.**

1.4.1 Press the PCM3.1 Eject button and remove the CD/DVD from the CD/DVD slot, if one was inserted.

1.4.2 Insert PCM3.1 Multimedia Update Disk (supplied) into the CD/DVD slot.

1.4.3 Confirm the message: “Avoid interrupting the update process. Interrupting the update can result in malfunctions in the PCM system.” in the display.

1.4.4 Touch the “Yes” field on the touchscreen to confirm the question “Perform update of version PCM31_VXX2?”.

1.4.5 Start software update of PCM3.1 to system version X.X2.

1.4.6 Confirm the message: “System updated successfully to version PCM31_VXX2.” when the update is complete.

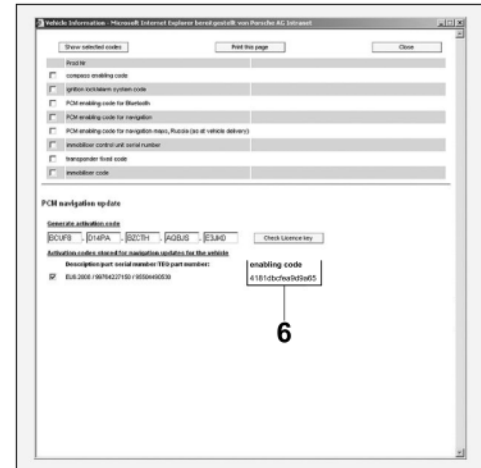


Figure 4

NOTICE

Voltage drop

- Risk of irreparable damage to control unit
 - Risk of damage to control unit
 - Fault entries in the control unit
 - Coding in the control unit is aborted
 - Malfunctions in control unit, even during programming
- ⇒ Switch off the ignition and remove the ignition key before disconnecting the control unit.
- ⇒ Ensure that the power supply is not interrupted during programming.
- ⇒ Connect a battery charger with a current rating of at least Nominal value 90 A to the vehicle battery.



Information

The **P90999 - PIWIS Tester 4** instructions take precedence since the description may be different with later Tester releases.

The procedure described here has been structured in general terms; different text or additions may appear on the **P90999 - PIWIS Tester 4**.

2 Code navigation software.

- 2.1 **P90999 - PIWIS Tester 4** must be connected and ignition switched on.
- 2.2 Select the vehicle type and start the diagnostic application.
- 2.3 Select the "PCM/CDR control unit" menu. Press •F12" to continue.
- 2.4 Question at end of control unit search: Press •F11" to skip or •F12" to confirm the question "Create vehicle analysis log (VAL)?".
- 2.5 Enter the enabling code.
 - 2.5.1 Switch to the "Maintenance/repairs" menu and select "Function enable". Press •F12" to continue.
 - 2.5.2 Select the required function, e.g. "America map data".
 - 2.5.3 Enter the enabling code, confirm by touching the "Status" cell and press •F8" to run the enable function.
 - 2.5.4 Once the message "Enable was successful" appears, press •F12" to continue.
- 2.6 Read out the fault memory of all systems, correct any existing faults, and erase the fault memory. ⇒ *Workshop Manual '033500 Fault memory for on-board diagnosis'*
- 2.7 **P90999 - PIWIS Tester 4** must be disconnected and ignition switched off.

**Information**

It can take up to 100 minutes to store the country database (DVD containing navigation database) and the relevant workshop DVD onto the PCM hard drive.

- 3 Save new navigation data to the PCM hard drive.
 - 3.1 Switch on ignition and insert the "PCM3.x Navigation Database XYZ" DVD in the CD/DVD slot.
 - 3.2 Acknowledge the message "Avoid interrupting the update process. Interrupting the update can result in malfunctions in the PCM system." in the display.
 - 3.3 Touch the "Yes" field on the touchscreen to confirm the question "Perform update of version (e.g. X.X.X America)?".
 - 3.4 Confirm the "System successfully updated to version XYZ" message at the end of the update and take the "PCM3.x Navigation Database XYZ" DVD out of the CD/DVD slot.
- 4 Concluding work
 - 4.1 Switch off PCM3.1 and ignition.
 - 4.2 Disconnect battery charger. (⇒ *Workshop Manual '2X00IN Battery trickle charging'*).

91 10 25 44: Performing navigation update

Labor time: **70 TU**

Includes: Activating navigation software, saving navigation database with new data status to the PCM3.1 hard drive.

Without: Generating enabling code for navigation data.

Important Notice: Technical Bulletins issued by Porsche Cars North America, Inc. are intended only for use by professional automotive technicians who have attended Porsche service training courses. They are written to inform those technicians of conditions that may occur on some Porsche vehicles, or to provide information that could assist in the proper servicing of a vehicle. Porsche special tools may be necessary in order to perform certain operations identified in these bulletins. Use of tools and procedures other than those Porsche recommends in these bulletins may be detrimental to the safe operation of your vehicle, and may endanger the people working on it. Properly trained Porsche technicians have the equipment, tools, safety instructions, and know-how to do the job properly and safely. Part numbers listed in these bulletins are for reference only. The work procedures updated electronically in the Porsche PIWIS diagnostic and testing device take precedence and, in the event of a discrepancy, the work procedures in the PIWIS Tester are the ones that must be followed.

© 2024 Porsche Cars North America, Inc.