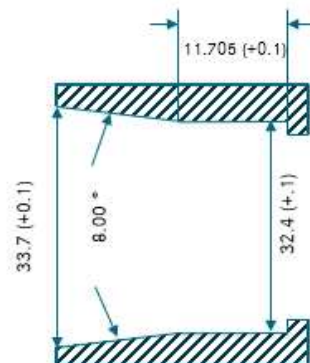
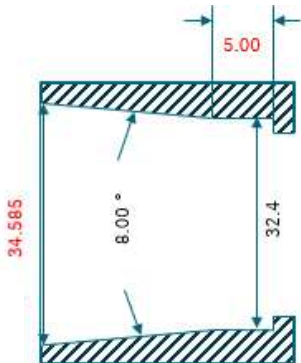
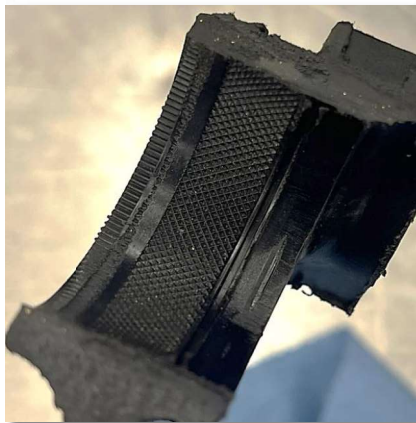


# ConMet Oil Pan Insert Additional Failures

Under Investigation	Solution In Progress	Prod + Svc Solution
---------------------	----------------------	---------------------



## Description

- Oil leak from oil pan drain plug area due to spinning inserts. Original issue was resolved by supplier updates to the oil pan manufacturing process. Original clean point date of 7/28/2021 based off of DMC serial numbers provided by ConMet.

## Factory Resolution

- DDC has been meeting regularly with ConMet to review the failure and potential ICA's and PCA's.
- Discrepancies found on ConMet's drawing when compared to Bolhoff (knurling supplier) recommendations. Not achieving proper adhesion between the insert and oil pan.
- EVAC line (equipped at truck plant) contributing to failures.
- New clean point date of **6/4/2024** for oil pans in production at DDC, starting ESN **472912S1170614**.

## Field Resolution

- Replace oil pan.
- Looking into a potential clip to help hold the oil pan insert and drain plug in place to prevent a sudden and catastrophic loss of oil while going down the road and on a possible service procedure for making a repair to the existing oil pan. ETA for both is TBD.

For limited distribution - Contains Preliminary and Pre-decisional Information Material Only

# Recent Updates/Accomplishments

- **Accomplishments**
- New geometry change point successfully launched on 6/4/2024
  - DMC for oil pan modified for internal traceability
    - 28<sup>th</sup> character changed from a “1” to a “9”
    - All previous pan DMC’s blacklisted
  - Exterior asterisk \* applied to part number for field traceability
- **Updates**
  - Ongoing discussion on field fix development

	<b>Text</b>	06/04/2024
	147301034132414909403105002948509403	
	<b>Text</b>	06/04/2024
	147301034132414909377105002948509377	
	<b>Text</b>	06/04/2024
	147301034132414909326105002948509326	
	<b>Text</b>	06/04/2024
	147301034132414909317105002948509317	OK
	<b>Text</b>	06/04/2024
	147301034132412928801105002148228801	OK

For limited distribution - Contains Preliminary and Pre-decisional Information Material Only