

Communication ID: 99324

Message

Target

Options

Approve / Deny

Clone

Request

Communication

Publish Dates

Start Date 7/17/2024 7:00 AM

- The Start Date is when the communication will be visible to dealers in DCMail.
- The End Date is when the communication will no longer be visible to dealers in DCMail.
- **NOTE:** End Dates are limited to one (1) year from the Start Date. If you wish to lengthen the End Date, you may extend it at any time after publish.

End Date 8/7/2024 11:55 PM

Note: All times are EST

[Extend End Date](#)

Title

MODULE - LANE DEPARTURE WARNING

What will display in DCMail for dealers to click on.
TIP: Keep titles short, but specific and eye catching.

Flagged for Reporting Agency

NO

Communication Summary

MODULE - LANE DEPARTURE WARNING

To increase search capability and visibility of your communication, please provide a brief summary or your message (140 characters max). This will display when dealers hover over your communication.

Message

The body of your communication. Use the formatting toolbar above to format text, insert tables, pictures, and/or hyperlinks.

Click Edit > Attach File to attach documents

IMPORTANT NOTES:

- Pictures must have unique file names. If you receive an error message when uploading a picture, it means the file name has already been chosen. Simply change your file name and try again.
- Communications cannot exceed more than 12MB; this includes images and text, and all attachments.

You have been identified as either having stock on hand or in transit to your dealership.

Please check and return suspect stock of part number: **68646637AA**. Please refer to QIR attachment.

Please return all parts back to your facing depot using **Return Code 02**, before 7th August 2024.

For replacement place new orders.

Return any open orders in process too. Direct questions regarding returns via email to mopardmail@stellantis.com.

Attachments

[QIR_English.pdf](#)

File Attachment Information

File Size (MB)	File Name
0.14	QIR_English.pdf



MODULE - LANE DEPARTURE WARNING

Suspect Part Identification

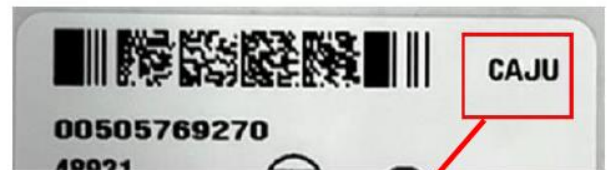
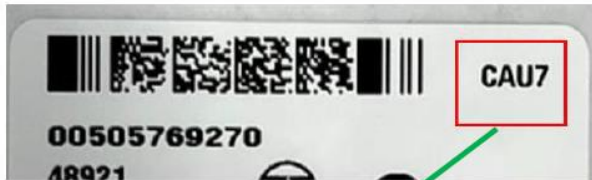
Part Number: 68646637AA

Correct Part

Suspect Part

OK

NOK



Good parts- Parts labelled with CAU7 are good parts

Suspect Parts – parts labelled with CAJU are suspect parts and must be returned.