

# Driver's Seat Cushion Leg Adjustment Inoperative

**Service Category** Vehicle Interior

**Market** USA and Mexico

**Section** Seat

Toyota Supports  
ASE Certification 

---

## Applicability

YEAR(S)	MODEL(S)	ADDITIONAL INFORMATION
2023 - 2024	Sequoia HV	
2022 - 2024	Tundra, Tundra HV	

## Introduction

Some 2023 – 2024 model year Sequoia Hybrid and 2022 – 2024 Tundra and Tundra Hybrid vehicles may exhibit a condition where the functionality of the power driver seat cushion length adjustment (CLA) is inoperative. This condition may occur when operating the control switch with the CLA in the closed position. Follow the Repair Procedure in this bulletin to address this condition.

## Driver's Seat Cushion Leg Adjustment Inoperative

---

### Warranty Information

#### For USA Market

OP CODE	DESCRIPTION	TIME	OFFP	T1	T2
BD2410	Add Spacer to Cushion Leg Adjustment Assembly	1.6	71703-#####*	72	83

\*Warranty claim MUST be submitted with the correct 10-digit OFFP. Choose the correct OFFP for the vehicle being repaired by searching for the parts in the Electronic Parts Catalog using the VIN filter.

#### **APPLICABLE WARRANTY (USA)**

- This repair is covered under the Toyota Basic Warranty. This warranty is in effect for 36 months or 36,000 miles, whichever occurs first, from the vehicle's in-service date.
- Warranty application is limited to occurrence of the specified condition described in this bulletin.

#### For Mexico Market

OP CODE	DESCRIPTION	TIME	OFFP	T1	T2
BD2410	Add Spacer to Cushion Leg Adjustment Assembly	1.6	71703-#####*	72	83

\*Warranty claim MUST be submitted with the correct 10-digit OFFP. Choose the correct OFFP for the vehicle being repaired by searching for the parts in the Electronic Parts Catalog using the VIN filter.

#### **APPLICABLE WARRANTY (MEXICO)**

- This repair is covered under the Toyota Basic Warranty. This warranty is in effect for 36 months or 60,000 kilometers, whichever occurs first, from the vehicle's in-service date.
- Warranty application is limited to occurrence of the specified condition described in this bulletin.

### Parts Information

#### For USA and Mexico Markets

PART NUMBER	PART NAME	QTY
72135-AN010	Spacer FR Seat Track	1

## Driver's Seat Cushion Leg Adjustment Inoperative

---

### Repair Procedure

1. Confirm the condition exists.

Does the vehicle exhibit a condition where the functionality of the power driver seat CLA is inoperative? This condition may occur when operating the control switch with the CLA in the closed position.

- **YES** — Continue to step 2.
- **NO** — This bulletin does NOT apply. Continue diagnosis using the applicable Repair Manual.

2. Remove the front seat from the vehicle.

Refer to TIS, applicable model and model year Repair Manual:

- [2023 – 2024](#) Sequoia Hybrid:  
*Vehicle Interior – Seat – Front Seat Assembly – Removal*
- [2022 – 2024](#) Tundra and Tundra Hybrid:  
*Vehicle Interior – Seat – Front Seat Assembly (for Power Seat) – Removal*

3. Disassemble the seat cushion cover.

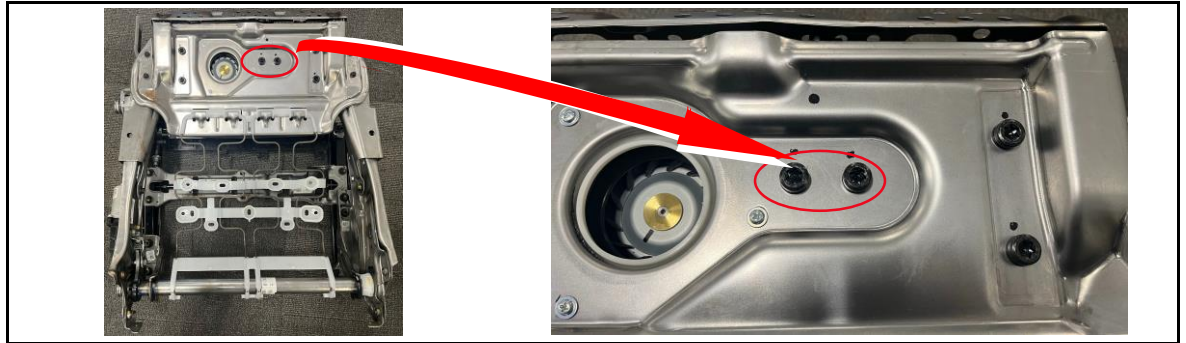
- [2023 – 2024](#) Sequoia Hybrid:  
*Vehicle Interior – Seat – Front Seat Assembly – Disassembly*
- [2022 – 2024](#) Tundra and Tundra Hybrid:  
*Vehicle Interior – Seat – Front Seat Assembly (for Power Seat) – Disassembly*

## Driver's Seat Cushion Leg Adjustment Inoperative

### Repair Procedure (continued)

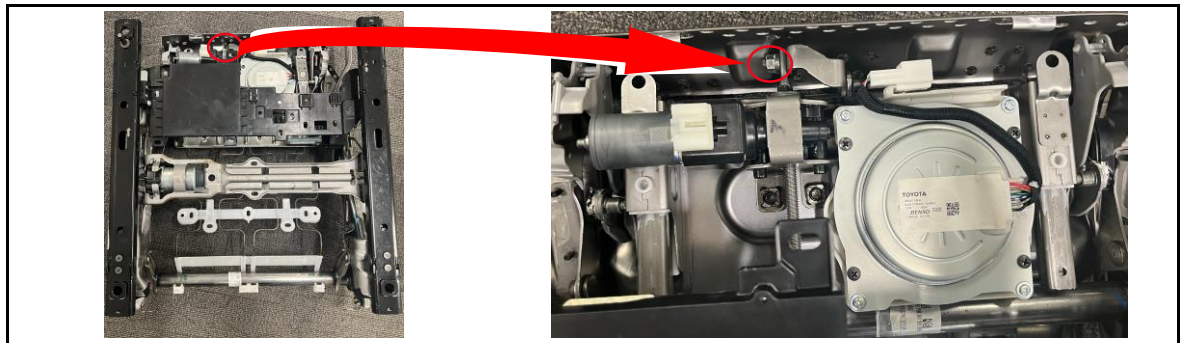
4. Remove the screw from the seat cushion frame.
  - A. Remove the two bolts on the top side of the seat cushion frame.

**Figure 1. Bolt Position on the Top Side of the Seat Cushion**



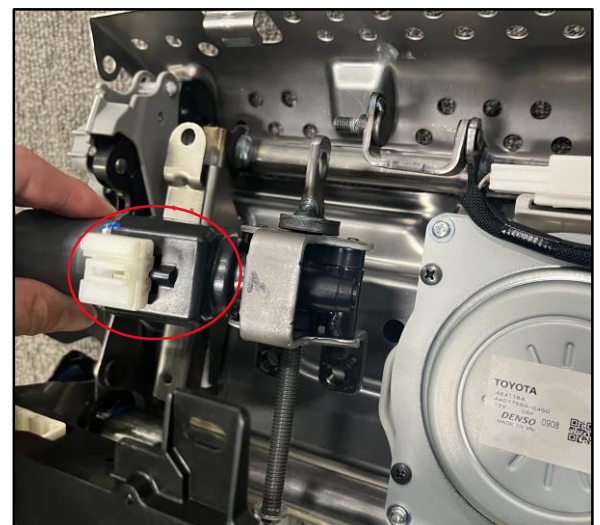
- B. Remove the bolt on the bottom side of the seat cushion frame.

**Figure 2. Bolt Position on the Bottom Side of the Seat Cushion**



- C. Remove the motor, that contains a screw, from the seat cushion frame.

**Figure 3. The Bottom Side of the Seat Cushion**

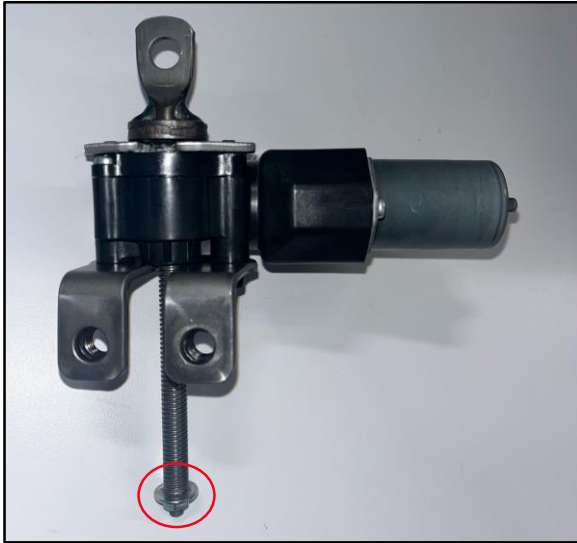


## Driver's Seat Cushion Leg Adjustment Inoperative

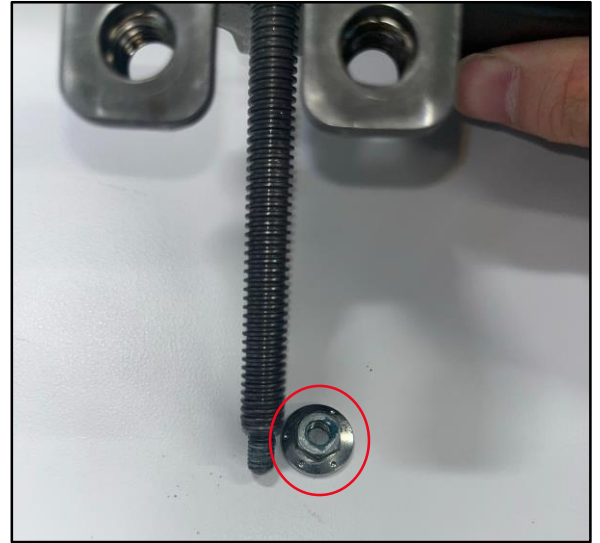
### Repair Procedure (continued)

- Remove the nut on the screw.

**Figure 4. Location of the Nut to Remove**



**Figure 5. Nut Removed**



- Remove the screw by turning it counterclockwise.

**Figure 6.**



**Figure 7. Screw Removed**



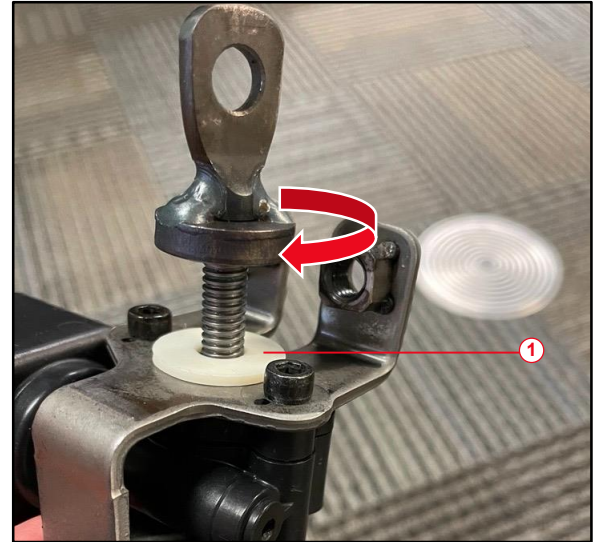
## Driver's Seat Cushion Leg Adjustment Inoperative

---

### Repair Procedure (continued)

7. Add a spacer to the screw, turning the screw clockwise.

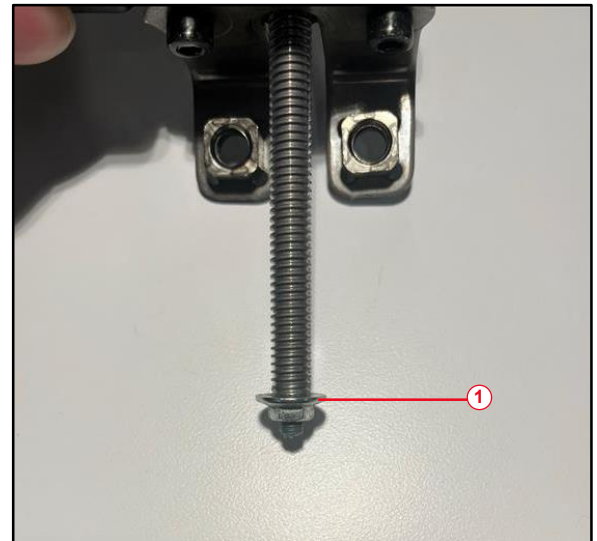
**Figure 8.**



<b>1</b>	<b>Spacer Added to Screw</b>
----------	------------------------------

8. Install the nut on the screw.  
Torque: 2.45 N\*m (25.0 kgf\*cm, 21.7 in\*lb)

**Figure 9.**



<b>1</b>	<b>Nut Installed Onto Screw</b>
----------	---------------------------------

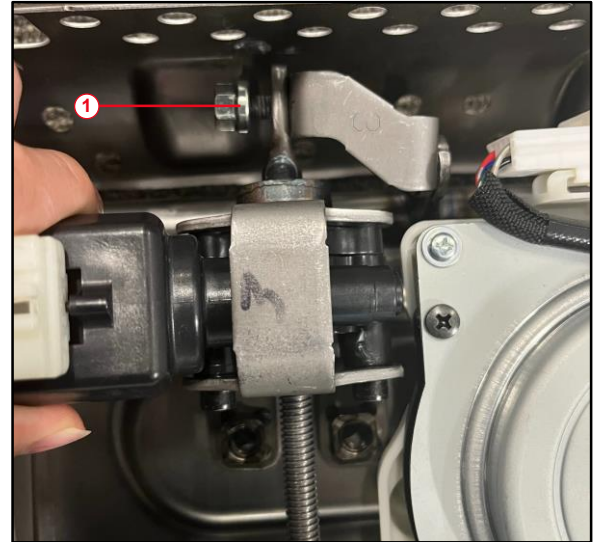
## Driver's Seat Cushion Leg Adjustment Inoperative

### Repair Procedure (continued)

9. Install the one bolt on the bottom side of the seat cushion frame.

**Torque: 6.5 N\*m (66.3 kgf\*cm, 57.5 in\*lb)**

**Figure 10. Bolt Installed in the Correct Location**

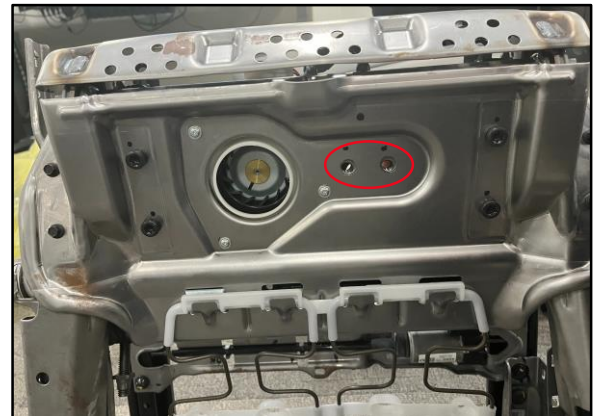


<b>1</b>	<b>Bolt</b>
----------	-------------

10. Install the two bolts on the top side of the seat cushion frame.

**Torque: 19.0N\*m (193.7 kgf\*cm, 14.0 ft\*lb)**

**Figure 11. Bolts Installation Location**



## Driver's Seat Cushion Leg Adjustment Inoperative

---

### Repair Procedure (continued)

11. Assemble the seat assembly.

Refer to TIS, applicable model and model year Repair Manual:

- [2023 – 2024](#) Sequoia Hybrid:  
*Vehicle Interior – Seat – Front Seat Assembly – Reassembly*
- [2022 – 2024](#) Tundra and Tundra Hybrid:  
*Vehicle Interior – Seat – Front Seat Assembly (for Power Seat) – Reassembly*

12. Install the seat to the vehicle.

Refer to TIS, applicable model and model year Repair Manual:

- [2023 – 2024](#) Sequoia Hybrid:  
*Vehicle Interior – Seat – Front Seat Assembly – Installation*
- [2022 – 2024](#) Tundra and Tundra Hybrid:  
*Vehicle Interior – Seat – Front Seat Assembly (for Power Seat) – Installation*

13. Confirm the condition no longer exists.