



Service Bulletin


Bulletin No.: 24-NA-126

Date: July, 2024

TECHNICAL

Subject: Front and Center of the Hood Showing Visible Indents, Dimples, or Low Spots

Brand:	Model:	Model Year:		VIN:		Engine:	Transmission:
		from	to	from	to		
Chevrolet	Traverse	2024	2024	-	-	LK0	All

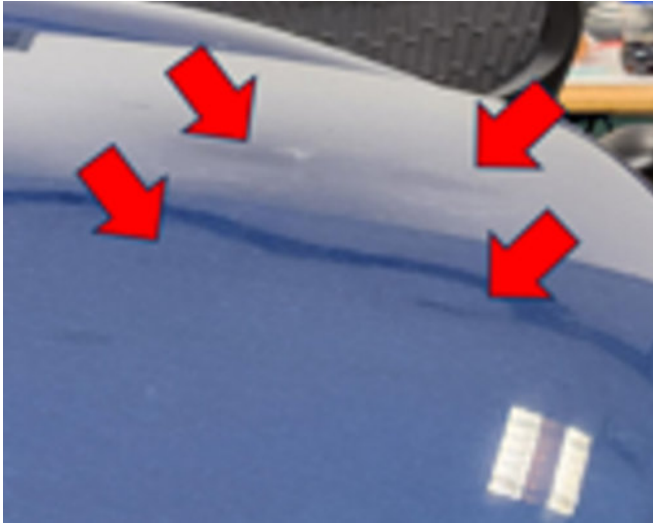
Involved Region or Country	North America
Additional Options (RPOs)	Equipped with 4 Cylinder 2.5L Engine (RPO LK0)
Condition	 <p style="text-align: right;">6687492</p> <p>Some customers may comment on low spots located in the front and center of their hood. This condition will only exist with the hood latch engaged.</p>
Cause	The cause of the condition may be due to the position of the latch and hood bumpers.
Correction	Complete the procedure listed below.

Important: Service agents must comply with all International, Federal, State, Provincial, and/or Local laws applicable to the activities it performs under this bulletin, including but not limited to handling, deploying, preparing, classifying, packaging, marking, labeling, and shipping dangerous goods. In the event of a conflict

between the procedures set forth in this bulletin and the laws that apply to your dealership, you must follow those applicable laws.

Service Procedure

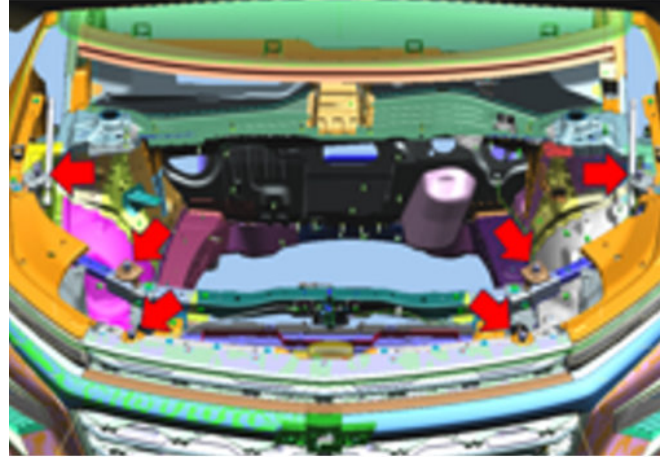
1. Confirm the hood has dimples with the hood closed and latch engaged. Look at the hood in daylight or natural light in various positions around the hood and fender area to see the condition.



6687492

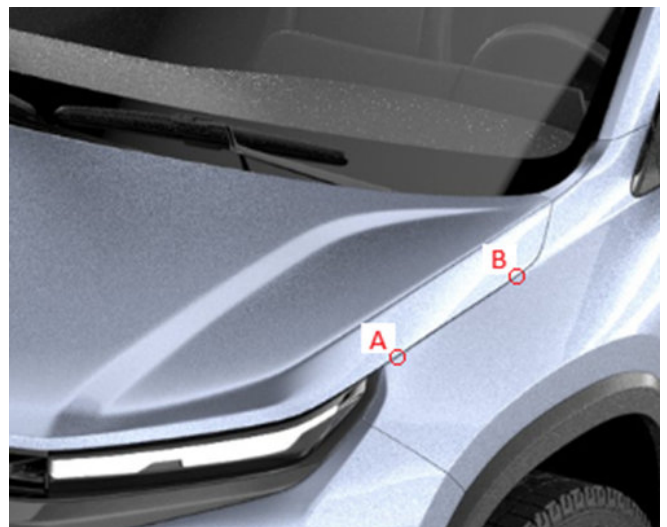
Hood dimples with this condition outlined in bulletin will only be visible in the location shown above.

2. Confirm the hood dimples disappear when the latch is released.
 - If the hood dimples disappear with the latch released, please follow directions in this bulletin.
 - If the hood dimples do not disappear with the latch released or they are not in the spots shown above, this issue is not related to the latch and bumpers. Continue diagnosis referring to SI.
3. Adjust the hood latch up in 0.5mm increments and adjust the 6 hood bumpers until the hood dimples are mitigated.



6687493

- Ensure all 6 adjustable bumpers are making contact with the hood after each adjustment.
- Ensure latch bolts are torqued to correct specification.



6687494

4. Measure the gap from fender to hood to ensure proper alignment on driver and passenger side. 4.5mm nominally with a +/- range of 0.75mm at locations A and B.
 - If the gap is not correct, repeat step 3 going down 0.5 increments and adjust the hood bumpers until the gap is within specifications.
5. After adjustments are complete and gap is within specification, road test at highway speed to ensure the hood does not flutter or rattle.

Parts Information

No parts are required for this repair.

Warranty Information

For vehicles repaired under the Bumper-to-Bumper coverage (Canada Base Warranty coverage), use the following labor operation. Reference the Applicable Warranties section of Investigate Vehicle History (IVH) for coverage information.

Labor Operation	Description	Labor Time
*1486018	Hood Dimple Latch and Bumper Adjustment	0.7 hr
*This is a unique Labor Operation for Bulletin use only.		

Version	1
Modified	Released July 11, 2024

