



# TECHNICAL SERVICE BULLETIN

Classification: DA23-007A	Reference: NTB24-005A	Date: May 9, 2024
------------------------------	--------------------------	----------------------

## ENGINE RPM HIGHER THAN EXPECTED WHEN USING INTELLIGENT CRUISE CONTROL

This bulletin has been amended. See **AMENDMENT HISTORY** on the last page.  
Please discard previous versions of this bulletin.

**APPLIED VEHICLES:** 2022-2023 Frontier (D41)  
**APPLIED DATES:** Built on or before June 13, 2023

### IF YOU CONFIRM

The customer states the engine RPM is higher than expected after a downshift when using ICC.

### ACTION

Follow the **SERVICE PROCEDURE** in this bulletin to:

1. Confirm the current ICC/ADAS 2 part number.
2. Reprogram the ICC/ADAS 2, if applicable.
3. Configure the ICC/ADAS 2.
4. Erase the DTCs.

**IMPORTANT:** The purpose of **ACTION** (above) is to give you a quick idea of the work you will be performing. You **MUST** closely follow the entire **SERVICE PROCEDURE** as it contains information that is essential to successfully completing this repair.

Bulletins are intended for use by qualified technicians, not 'do-it-yourselfers'. Qualified technicians are properly trained individuals who have the equipment, tools, safety instruction, and know-how to do a job properly and safely. **NOTE:** If you believe that a described condition may apply to a particular vehicle, **DO NOT** assume that it does. See your Nissan dealer to determine if this applies to your vehicle.

## SERVICE PROCEDURE

### Confirm the ICC/ADAS 2 Part Number

**IMPORTANT:** Before starting, make sure:

- ASIST on the CONSULT PC has been synchronized (updated) to the current date.
- All C-III plus software updates (if any) have been installed.
- During the reprogramming process, you will receive some errors. These errors are expected. Please follow all of the steps in this procedure to successfully complete the reprogramming process.

#### **NOTICE**

- Connect a battery maintainer or smart charger set to reflash mode or a similar setting. If the vehicle battery voltage drops below 12.0V or rises above 13.5V during reprogramming, the ICC/ADAS 2 control unit may be damaged.
  - Be sure to turn OFF all vehicle electrical loads. If a vehicle electrical load remains ON, the ICC/ADAS 2 control unit may be damaged.
  - Be sure to connect the AC Adapter. If the CONSULT PC battery voltage drops during reprogramming, the process will be interrupted and the ICC/ADAS 2 control unit may be damaged.
  - Turn OFF all external Bluetooth® devices (e.g., cell phones, printers, etc.) within range of the CONSULT PC and the VI. If Bluetooth® signal waves are within range of the CONSULT PC or VI during reprogramming, reprogramming may be interrupted and the ICC/ADAS 2 control unit may be damaged.
1. Connect the Vehicle Interface (VI) to the vehicle.
    - Make sure to use the correct VI for the CONSULT PC.
  2. Turn the ignition ON with the engine OFF.
  3. Turn ON the hazard warning lights.
  4. Start C-III plus.
  5. If prompted, select **USA/CANADA Dealers** from the drop down menu, and then select **OK**.

6. Login using your NNAnet credentials.

**IMPORTANT:** If not prompted to enter your username and password, the CONSULT PC may not be connected to Wi-Fi. Close C-III plus, confirm the CONSULT PC is connected to Wi-Fi, and then reopen C-III plus.

7. Wait for the VI to be recognized.

- The serial number will display when the VI is recognized.

8. Select **Re/programming, Configuration**.

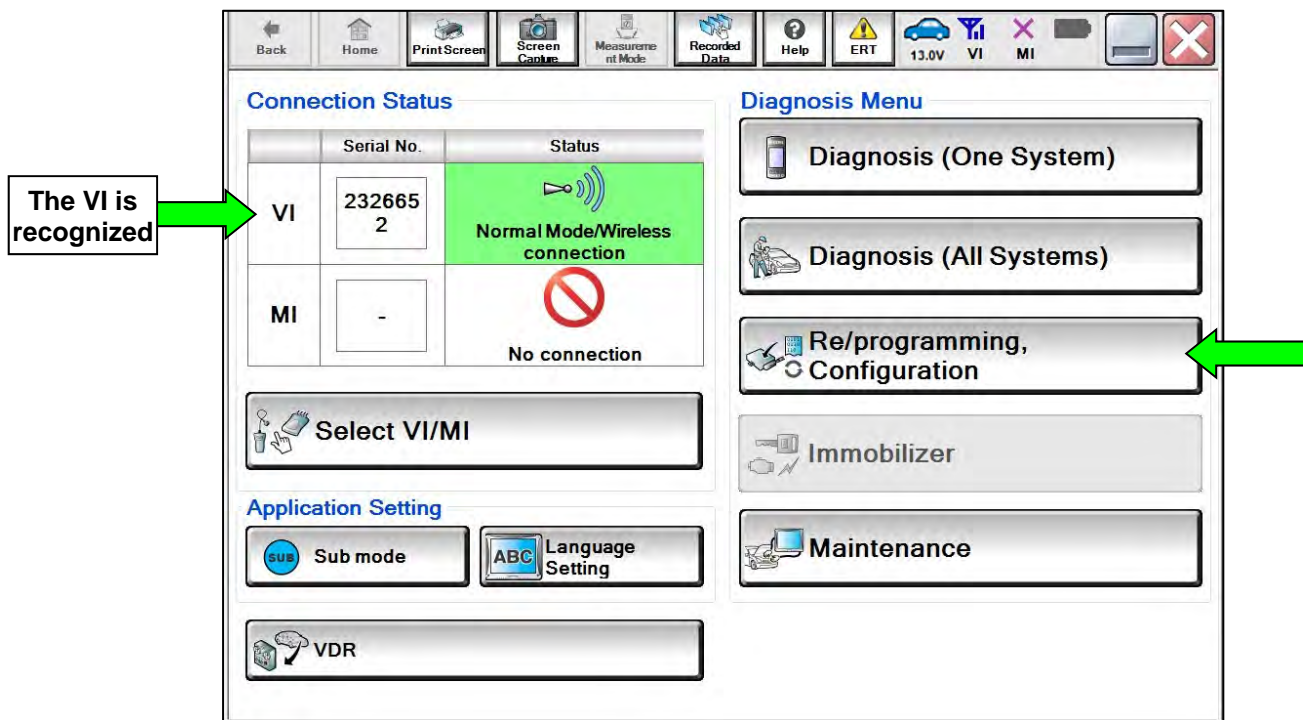


Figure 1

- Check the box confirming the precautions have been read, and then select **Next**.

**HINT:** Use the arrows (if needed) to view and read all precautions.

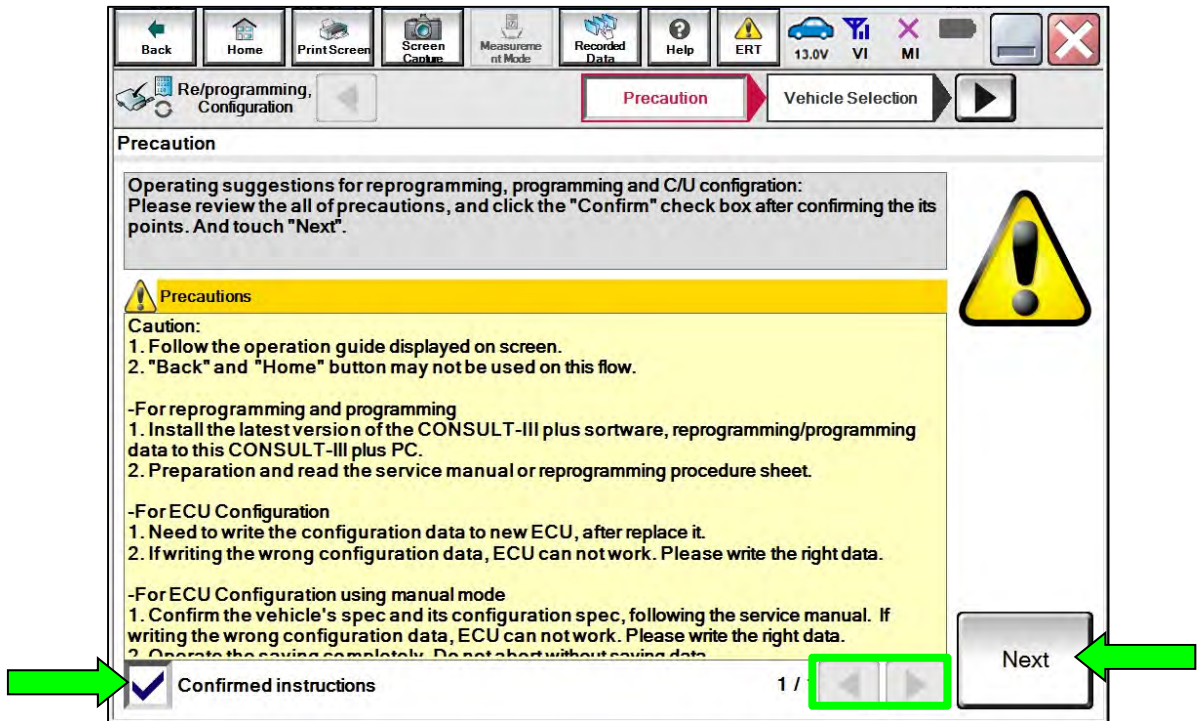


Figure 2

- Select **Automatic Selection(VIN)**.

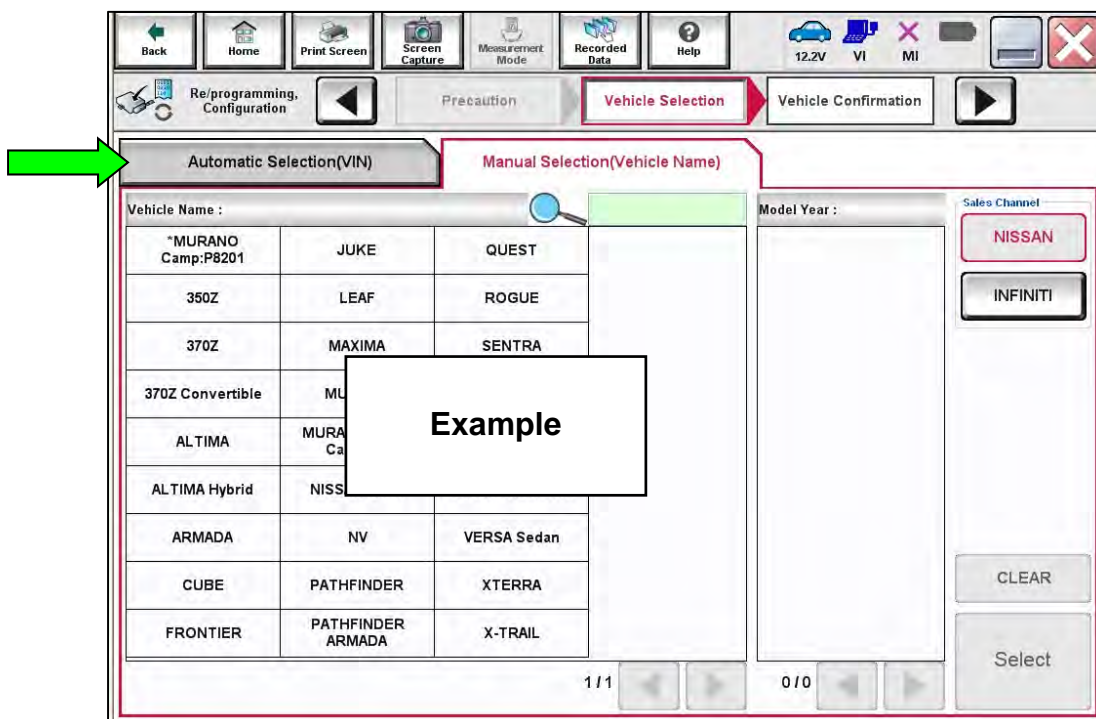


Figure 3

11. Make sure the **VIN or Chassis #** matches the vehicle's VIN, and then select **Confirm**.

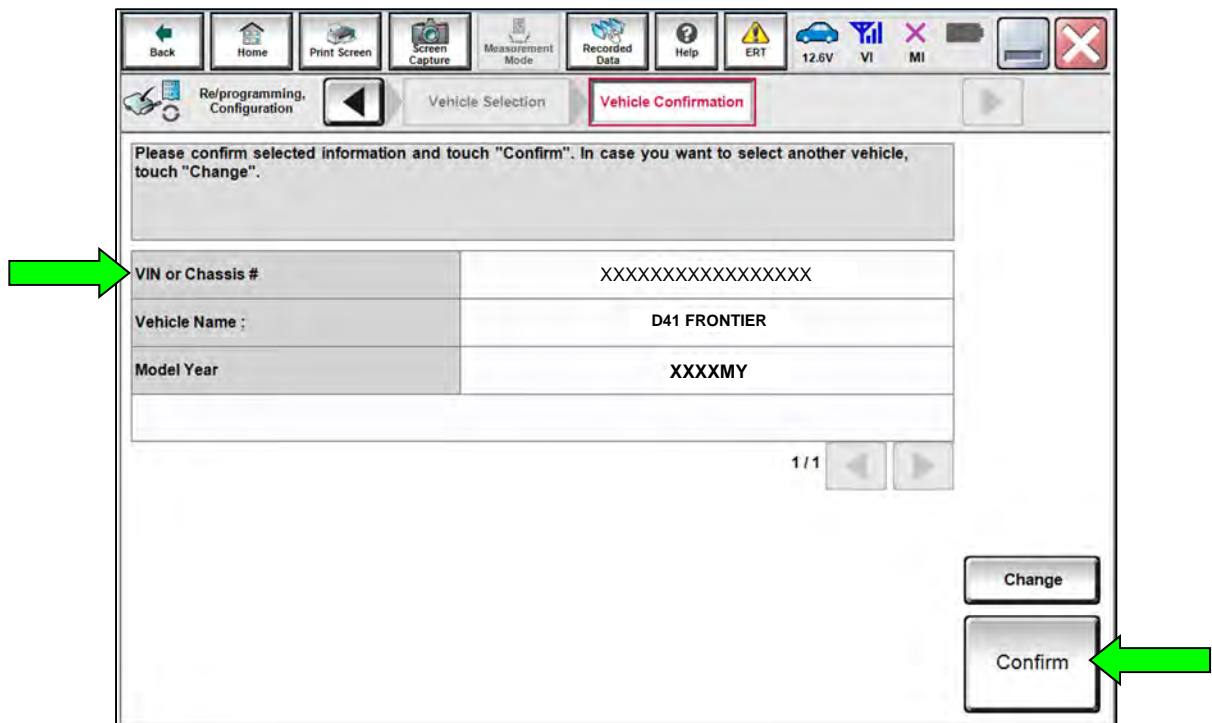


Figure 4

12. Confirm the VIN is correct for the vehicle, and then select **Confirm**.

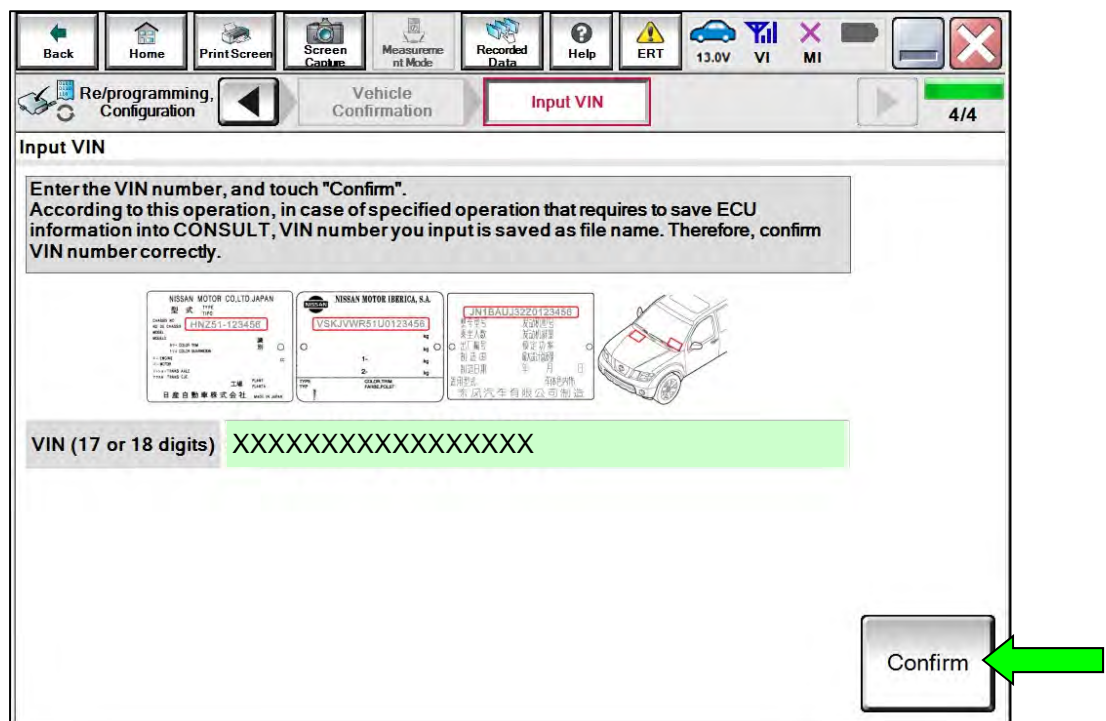


Figure 5

13. Select **ICC/ADAS 2**.

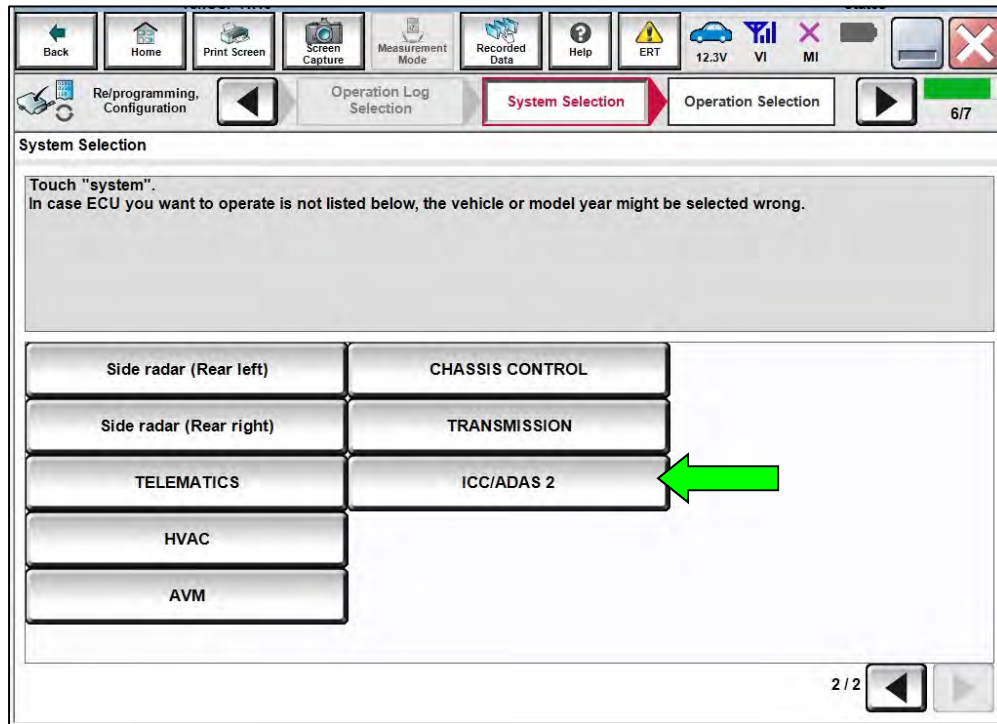


Figure 6

14. Select **Reprogramming**.

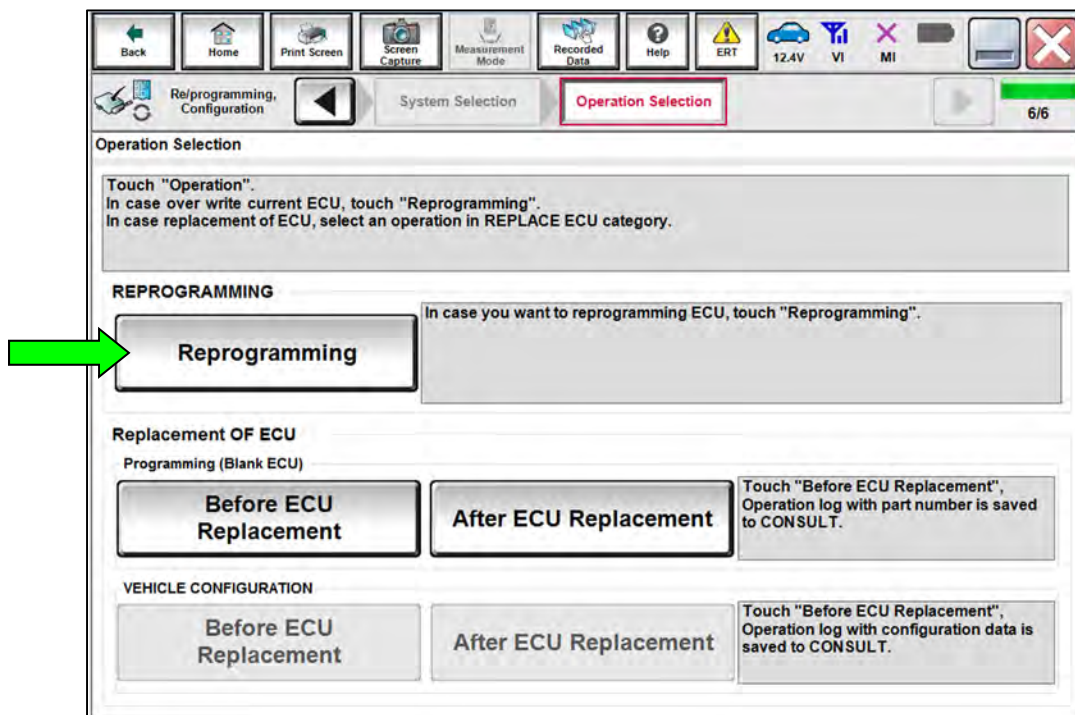


Figure 7

- Find the ICC/ADAS 2 **Part Number** and write it on the repair order, and then select **Save**.

**HINT:** This is the current ICC/ADAS 2 Part Number (P/N).

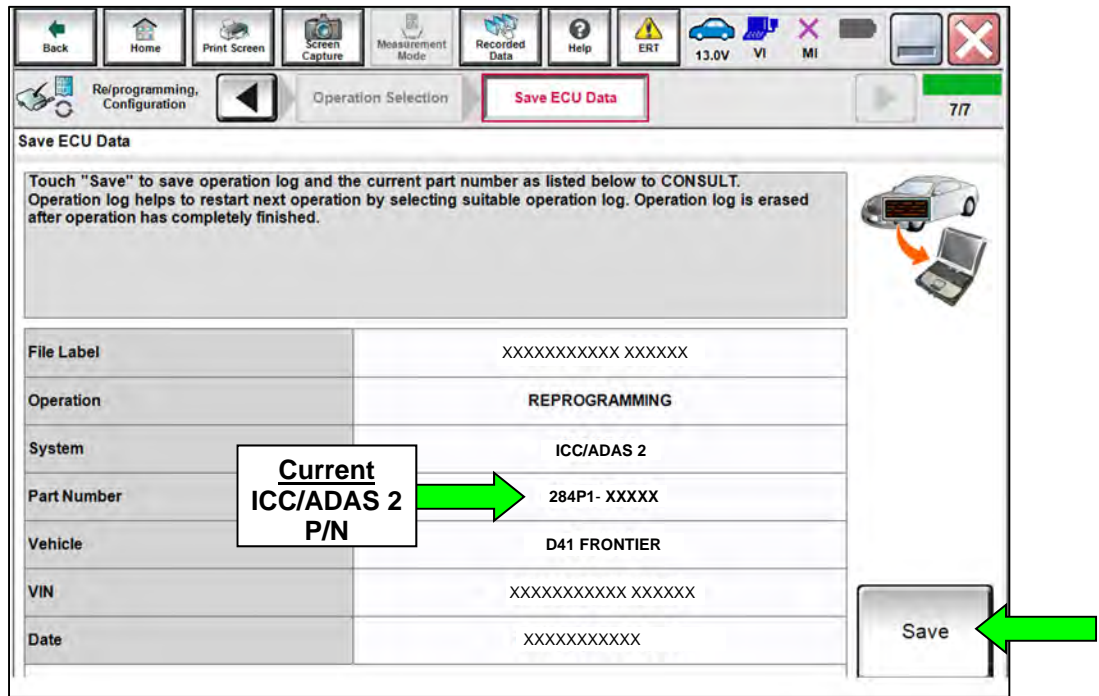


Figure 8

- Compare the P/N you wrote down in step 15 to the numbers in the **CURRENT ICC/ADAS 2 PART NUMBER** column in **Table A**.
  - If there is a match in **Table A**, continue with the reprogramming procedure.
  - If there is not a match, in **Table A**, this bulletin does not apply. See the ESM for further diagnostic information.

**Table A**

<b>CURRENT ICC/ADAS 2 PART NUMBER: 284P1-</b>
9BU3A, 9BU3C 9BU4B, 9BU4D, 9BU4E 9BV3B, 9BV3C, 9BV3D, 9BV3E

## ICC/ADAS 2 Reprogramming

17. Check the box confirming the precautions have been read, and then select **Next**.

**HINT:** Use the arrows (if needed) to view and read all precautions.

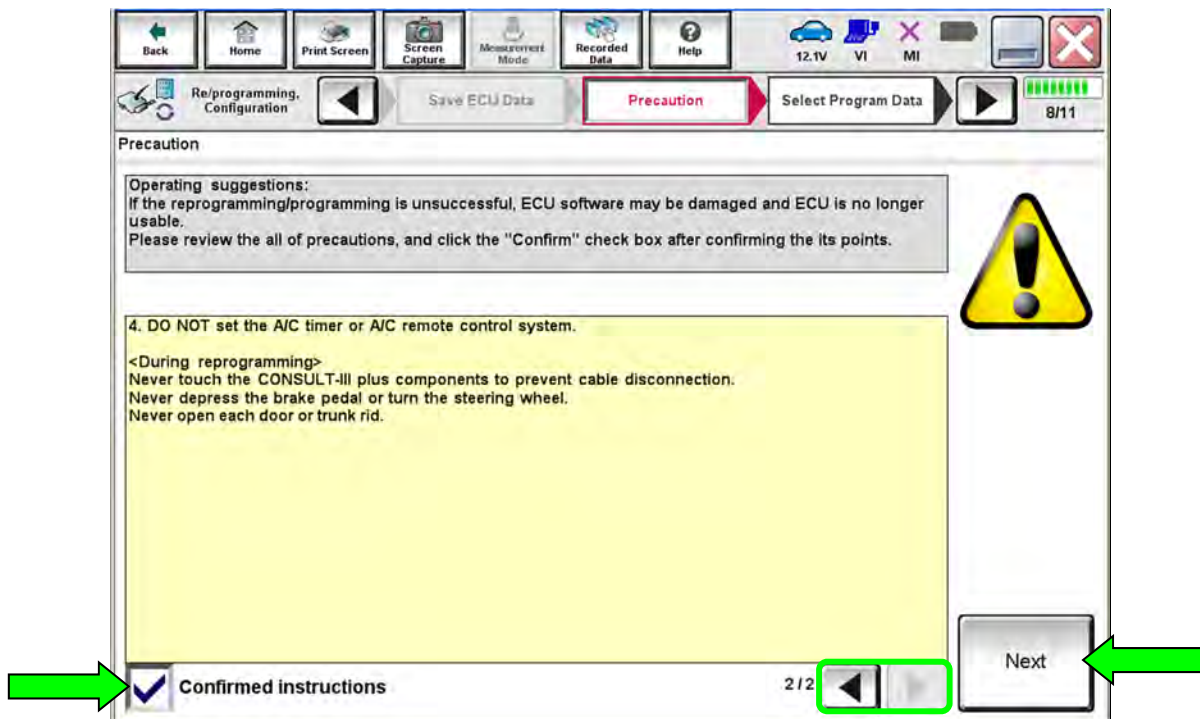


Figure 9

18. Confirm the battery charger is ON and the battery voltage is between 12V-13.5V, and then select **Next**.

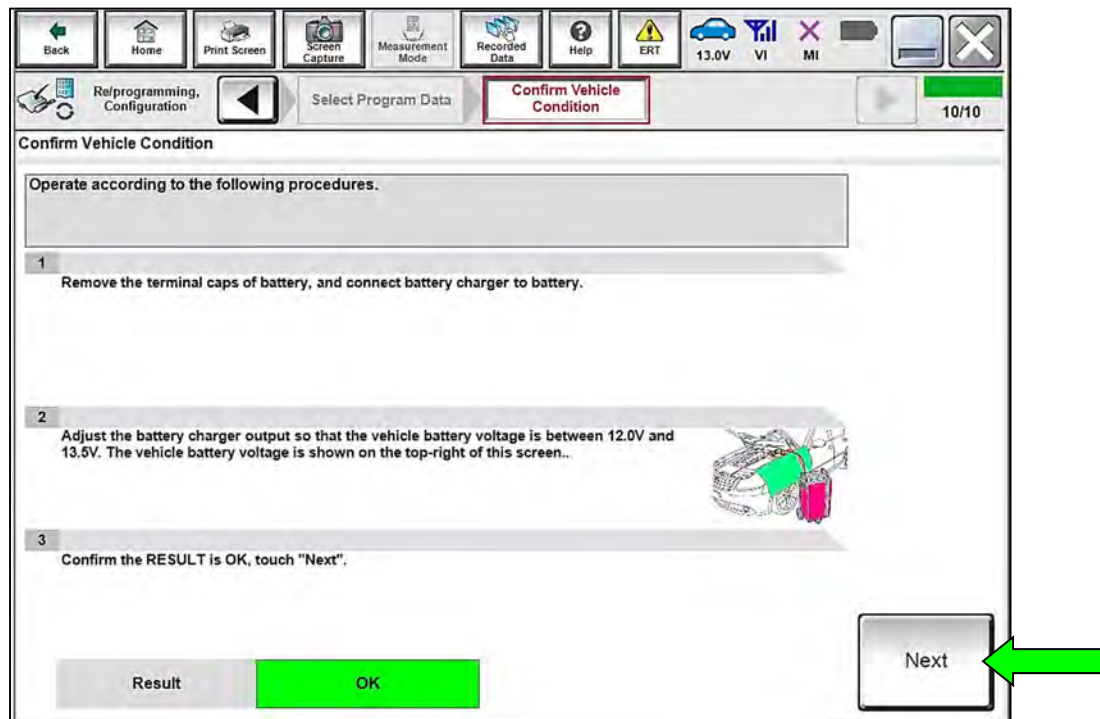


Figure 10

- Confirm the **Judgement** for all the **Monitor Items** are “OK”, and then select **Start**.

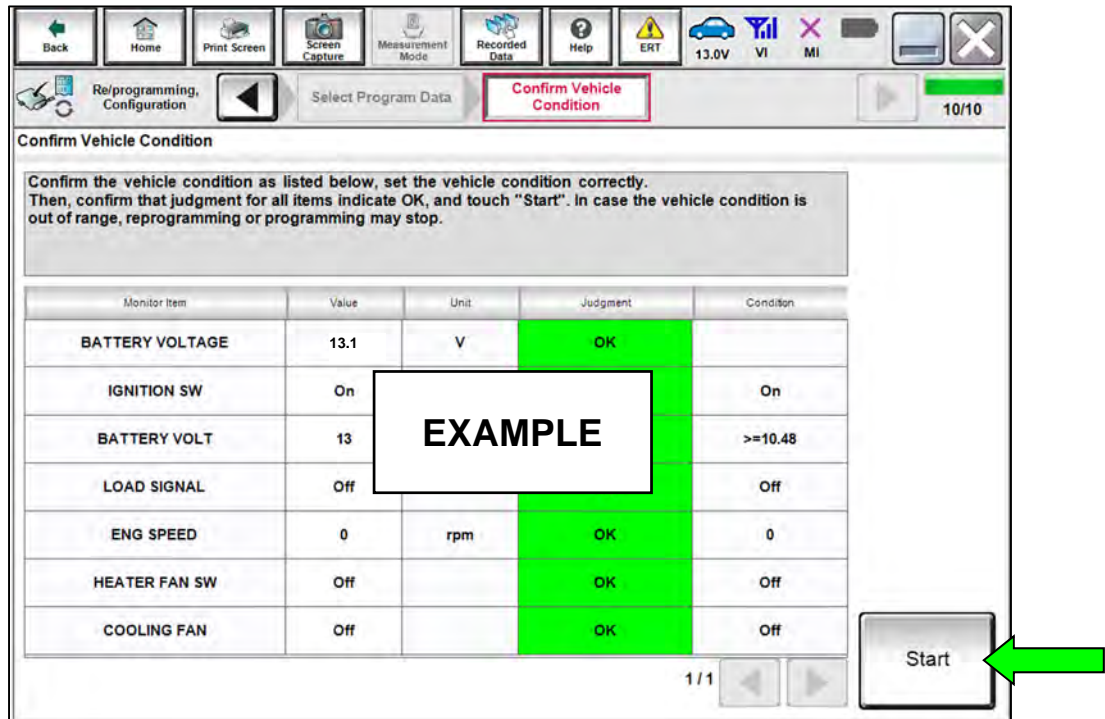


Figure 11

- Allow **Transfer Data** to complete.

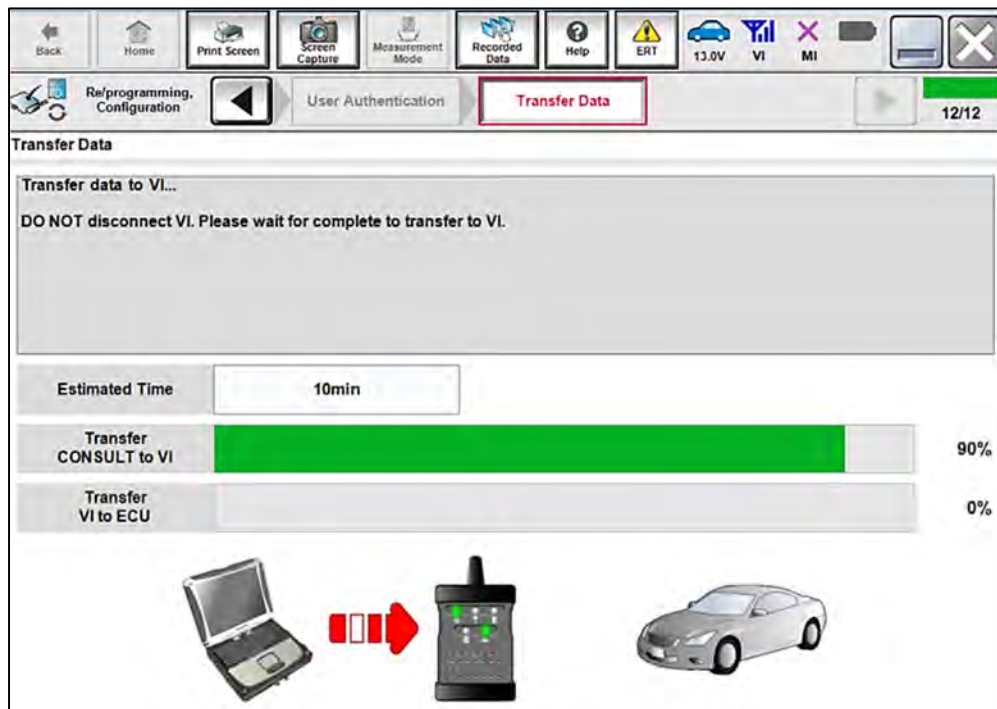


Figure 12

21. Once the reprogramming completes, select **Next**.

**HINT:**

- If the screen in Figure 13 does not display (indicating that reprogramming did not complete), refer to the information on the next page.
- Additional steps/operations are required before CONSULT will provide the final reprogramming confirmation report. Continue with the reprogramming procedure on page 12.

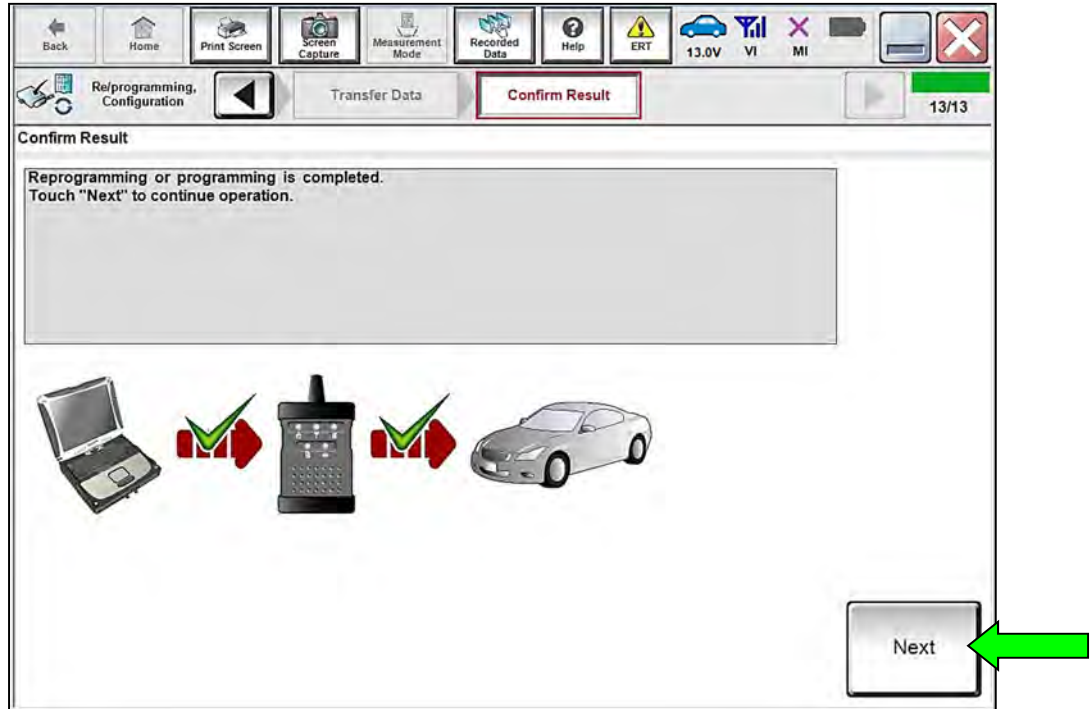


Figure 13

## ICC/ADAS 2 Recovery

**Do not disconnect the VI or shut down CONSULT if reprogramming does not complete.**

If reprogramming does not complete and the “!?” icon displays, as shown in Figure 14:

- Check battery voltage (12.0 - 13.5 V).
- Ignition is ON, engine OFF.
- External Bluetooth® devices are OFF.
- **All** electrical loads are OFF.
- Select **Retry** and follow the on screen instructions.
- Retry may not go through on first attempt and can be selected more than once.

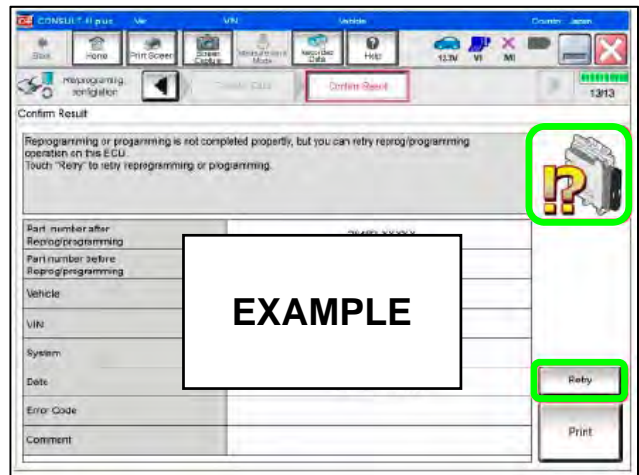


Figure 14

If reprogramming does not complete and the “X” icon displays, as shown in Figure 15:

- Check battery voltage (12.0 - 13.5 V).
- CONSULT A/C adapter is plugged in.
- Ignition is ON, engine OFF.
- Transmission is in Park.
- All VI cables are securely connected.
- All C-III plus updates are installed.
- Select **Home**, and restart the reprogram procedure from the beginning.

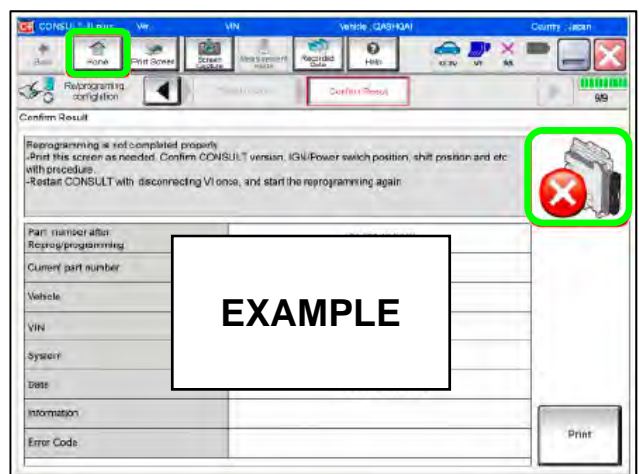


Figure 15

22. Perform **Erase All DTCs**.

a. Follow the on-screen instructions as shown in Figure 16 and Figure 17.

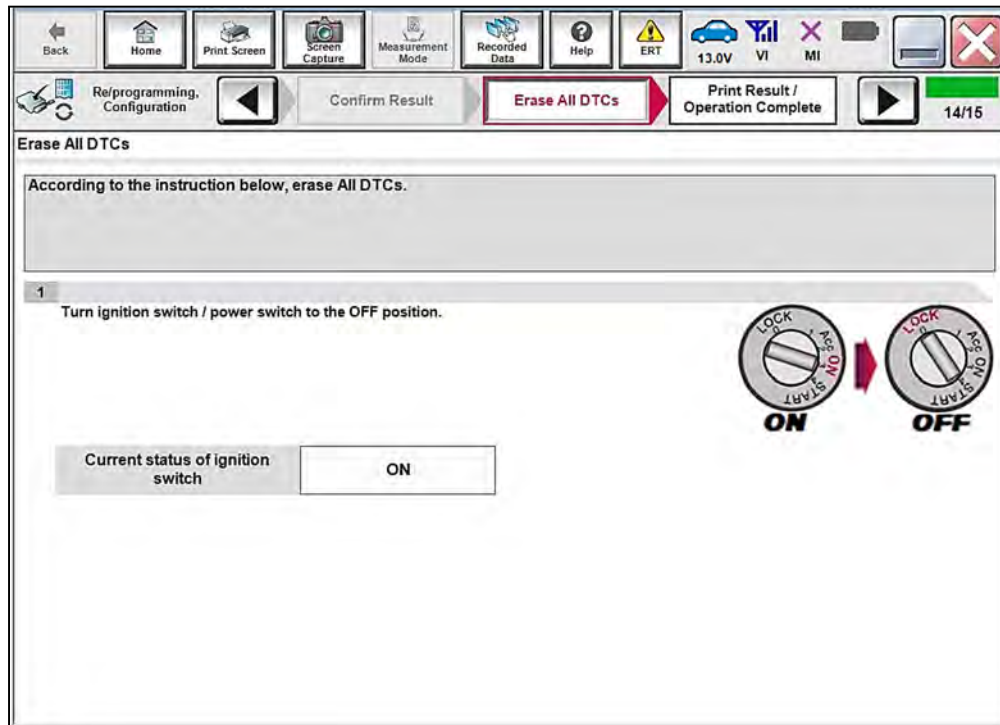


Figure 16

b. Select **Next**.

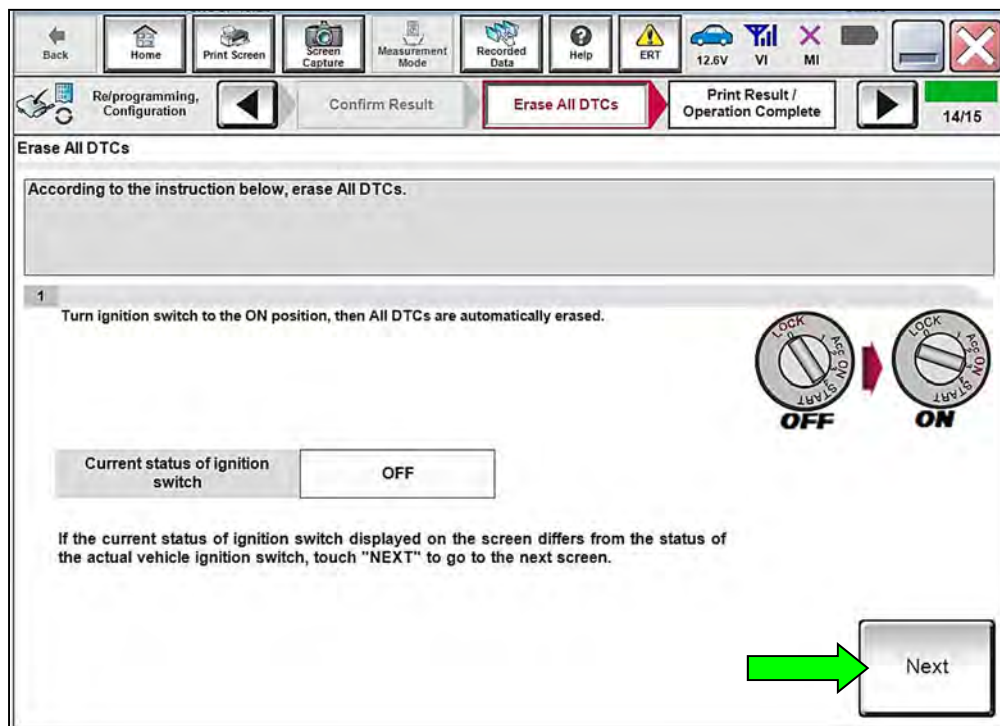


Figure 17

23. Verify the **Part number after Reprog/programming** and **Part number before Reprog/programming** are different, select **Print** and attach the reprogramming results to the repair order, and then select **Confirm**.

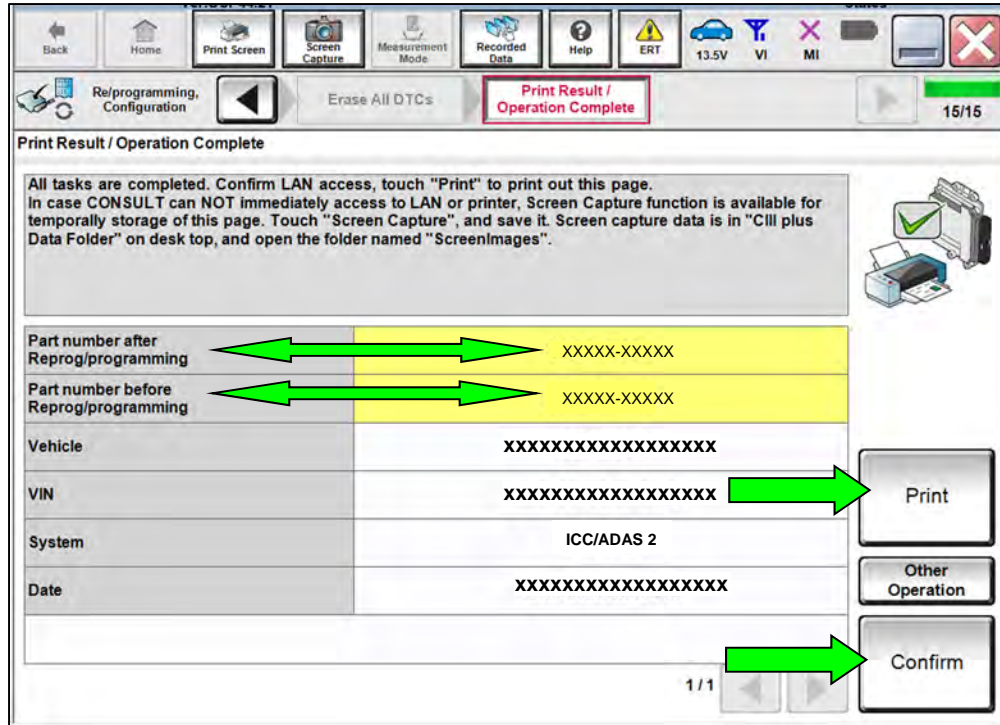


Figure 18

24. Select **Home**.

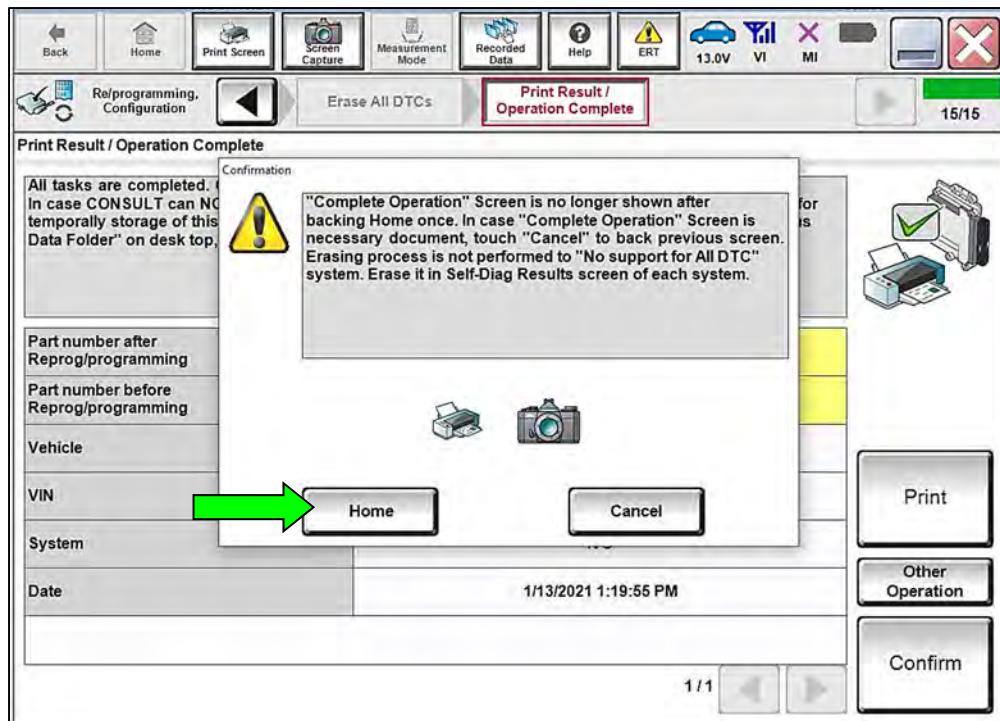


Figure 19

## ICC/ADAS 2 Configuration

25. Select **Re/programming, Configuration**.

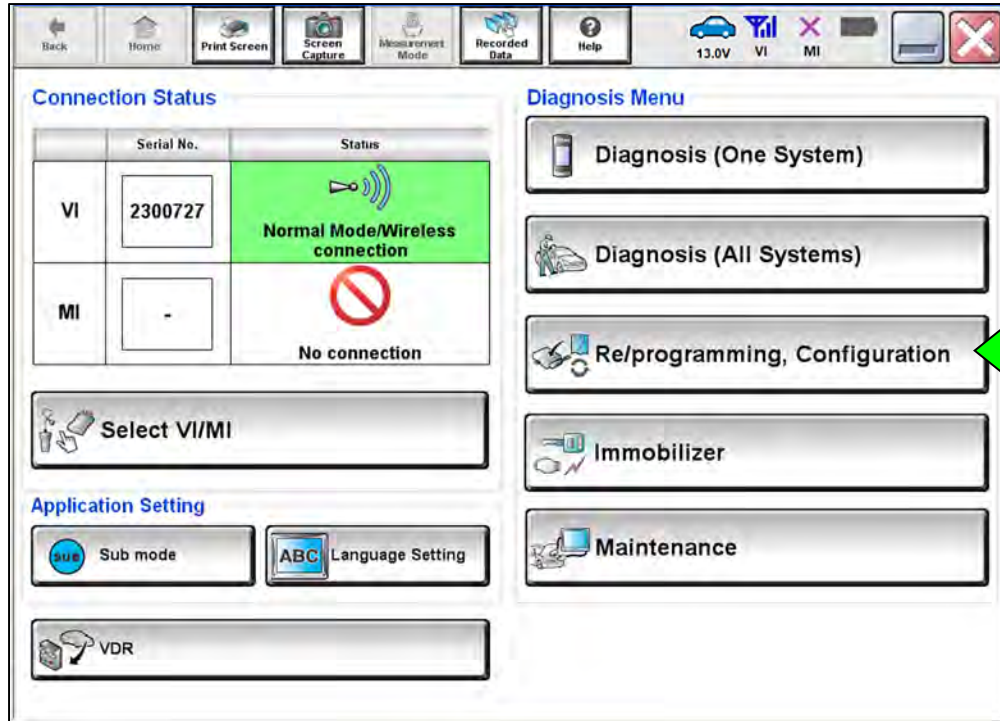


Figure 20

26. Check the box confirming the precautions have been read, and then select **Next**.

**HINT:** Use the arrows (if needed) to view and read all precautions.

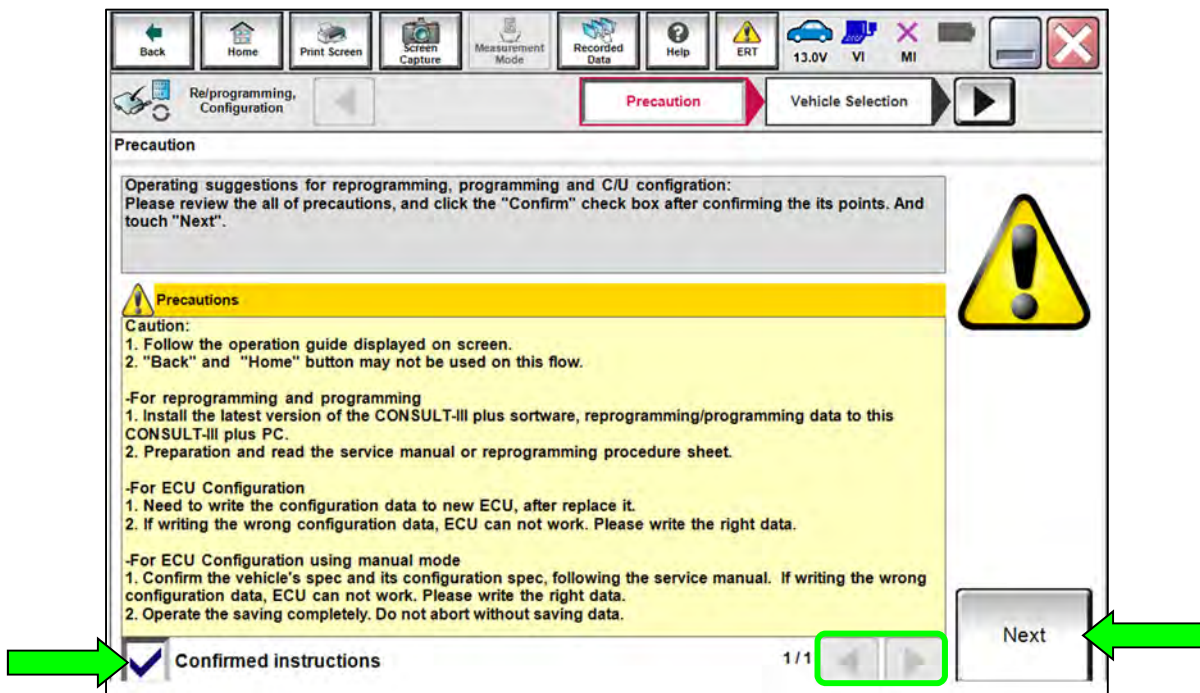


Figure 21

27. Select **Automatic Selection(VIN)**.

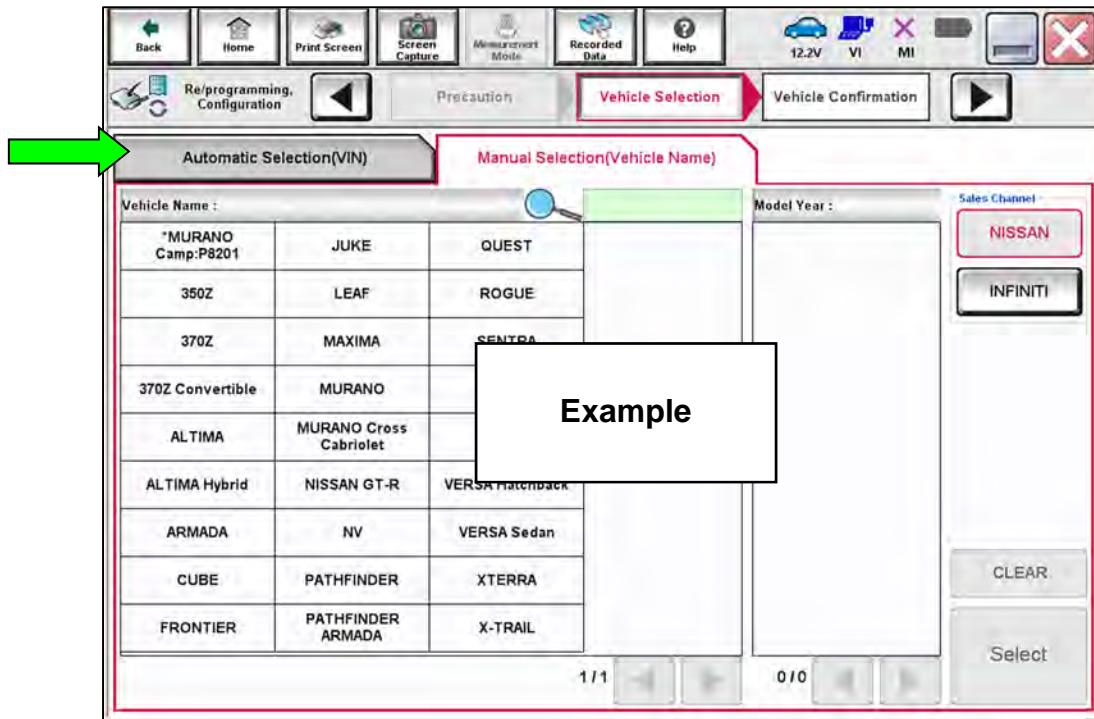


Figure 22

28. Confirm the **VIN or Chassis #** is correct, and then select **Confirm**.

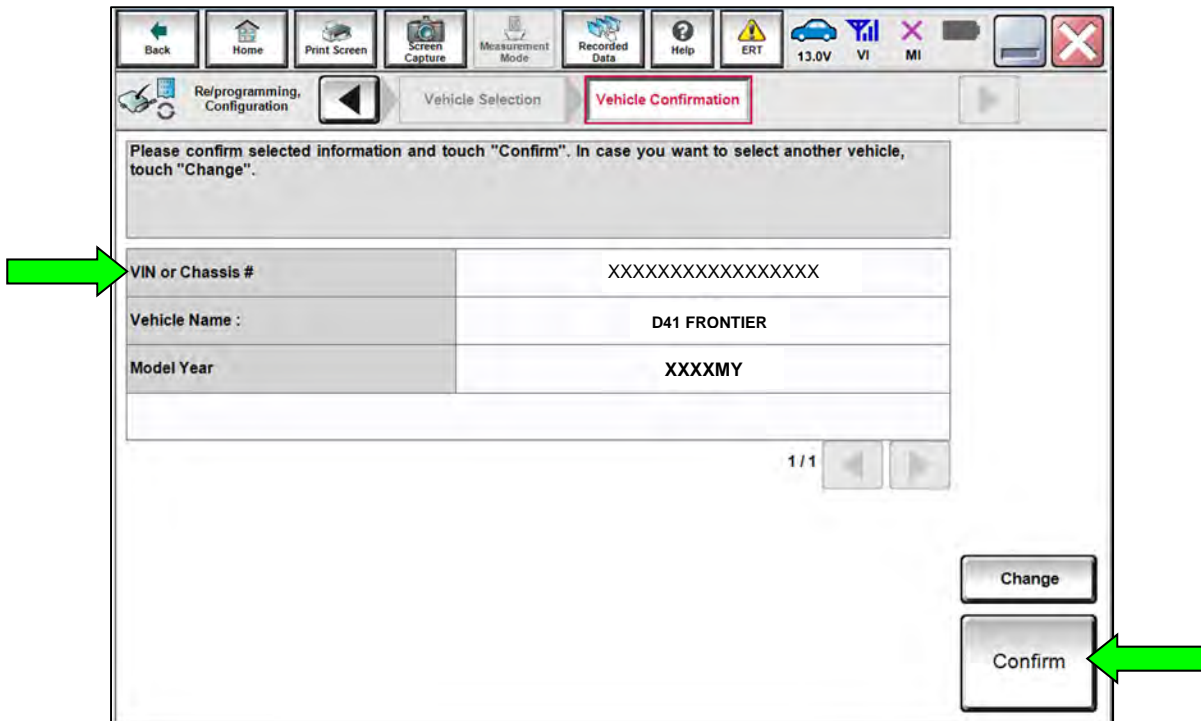


Figure 23

29. Confirm the VIN is correct for the vehicle, and then select **Confirm**.

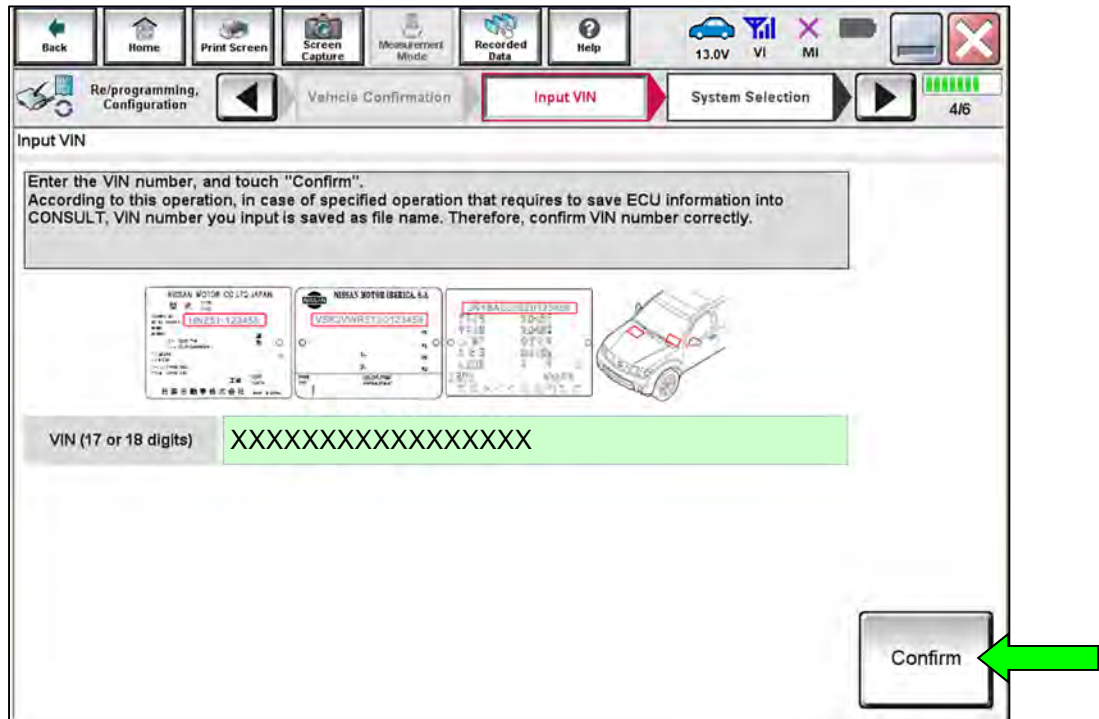


Figure 24

30. Select **ICC/ADAS 2**.

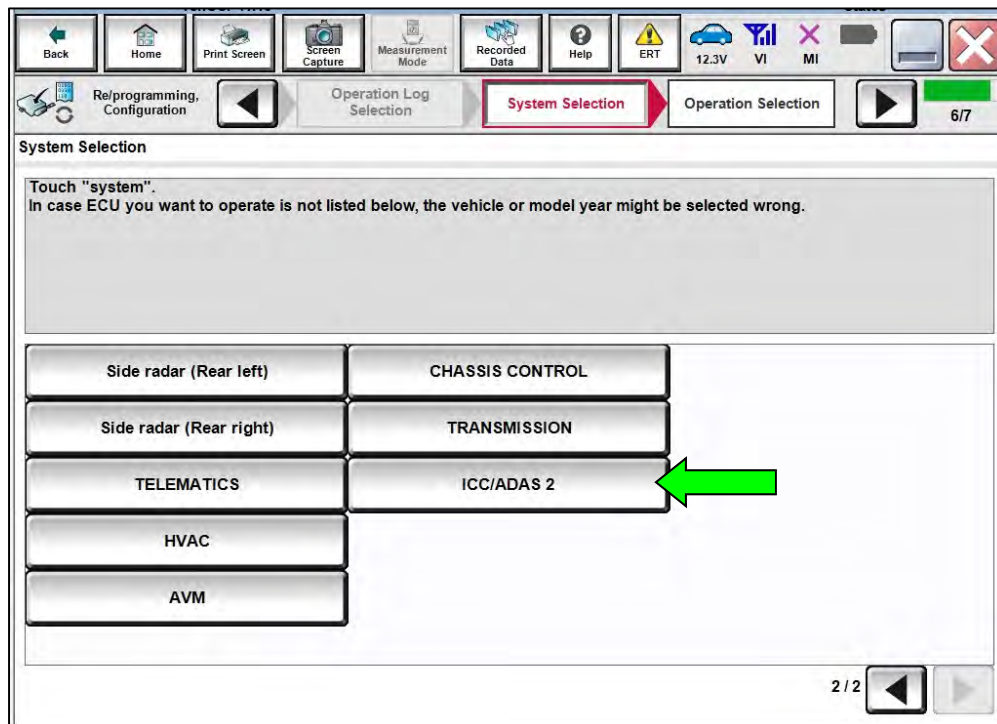


Figure 25

31. Select **After ECU Replacement** under **VEHICLE CONFIGURATION**.

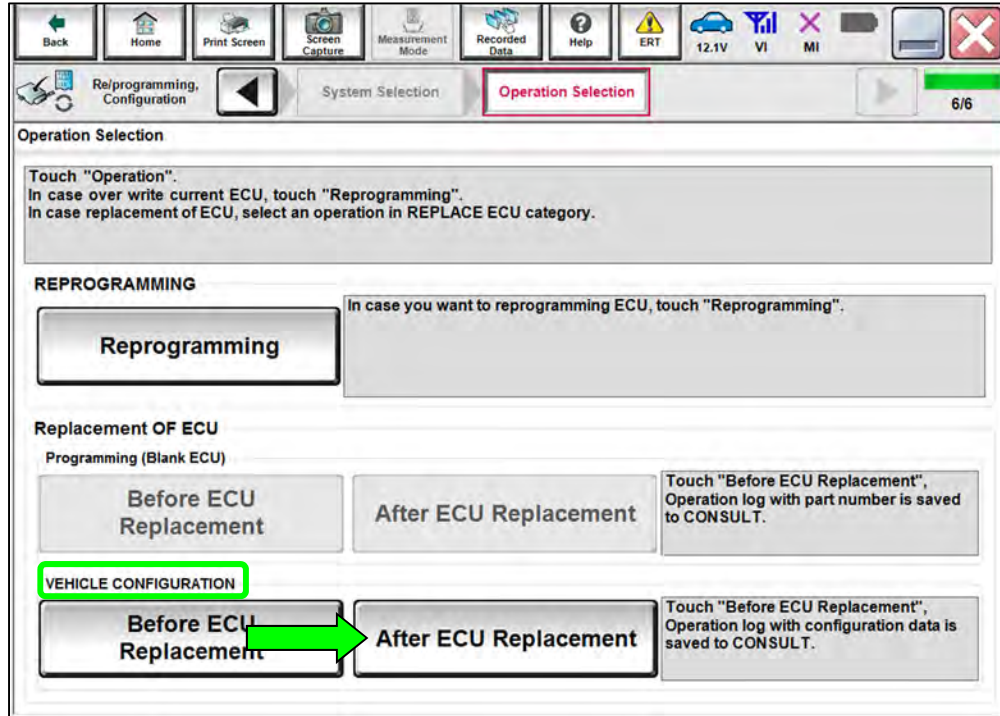


Figure 26

32. Select **Manual selection**.

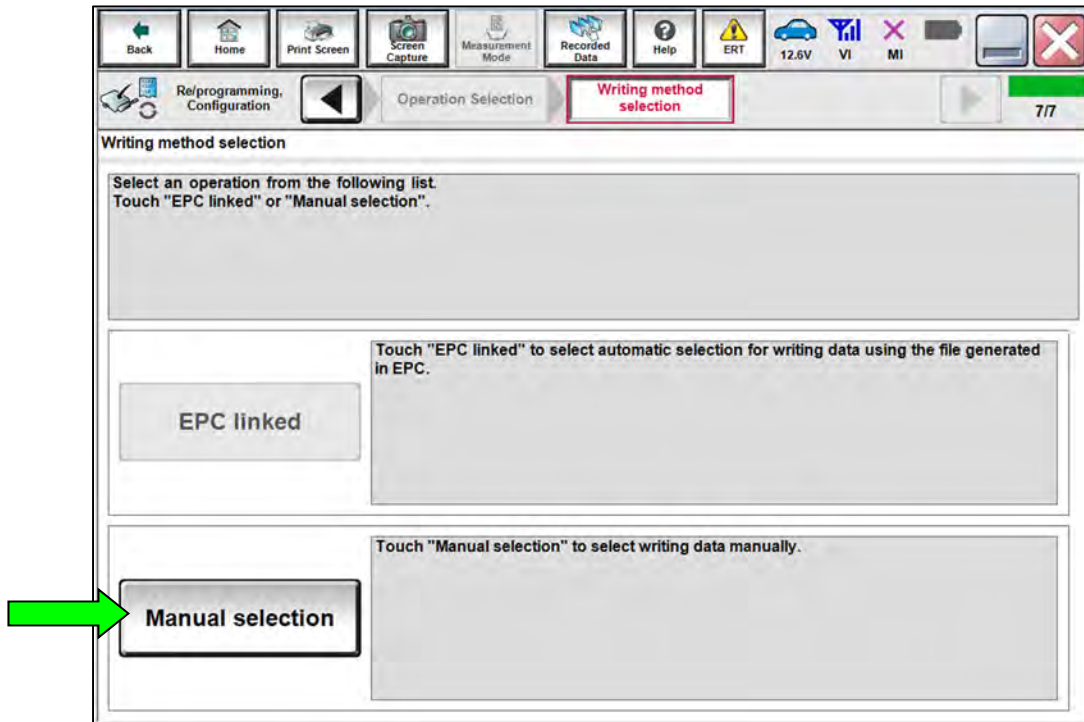


Figure 27

33. Select the applicable **Type ID**, and then select **Next**.
- Refer to the EPC to determine the **OLD CONFIG PART NUMBER (Type ID)** for your VIN.
  - Using both the **OLD CONFIG PART NUMBER (Type ID)** and the updated **ICC/ADAS 2 PART NUMBER** from step 23 on page 13, reference **Table B** on page 19 to determine and select the **NEW CONFIG PART NUMBER (Type ID)**.

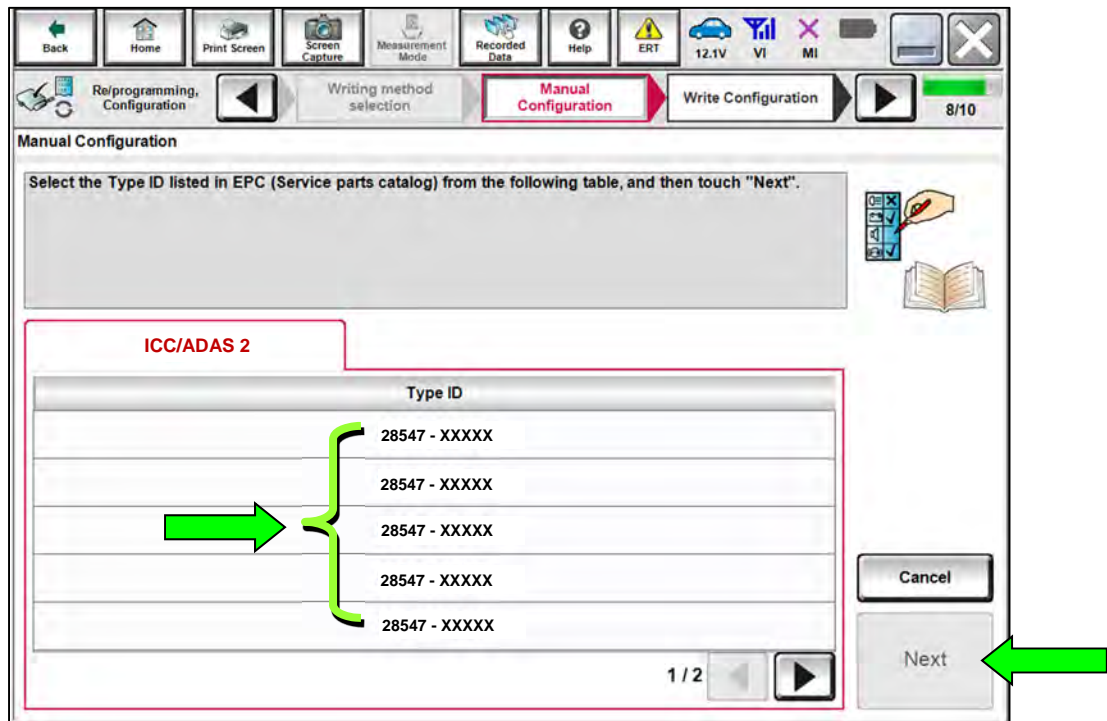


Figure 28



34. Select **OK**.

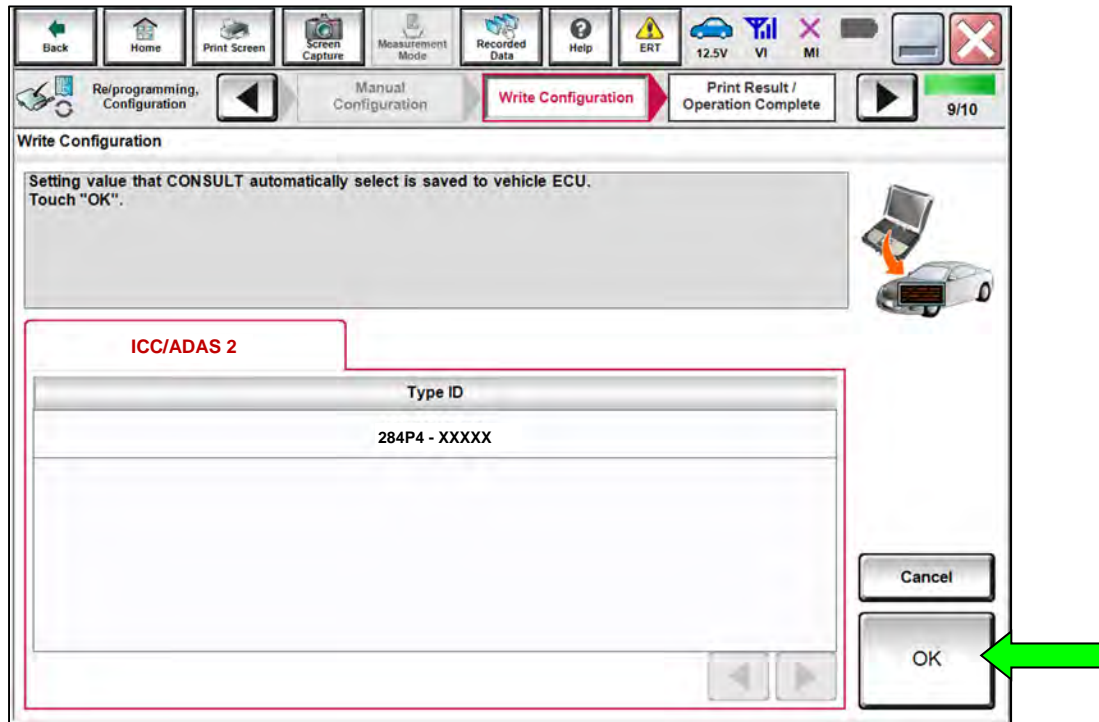


Figure 29

35. Select **End**.

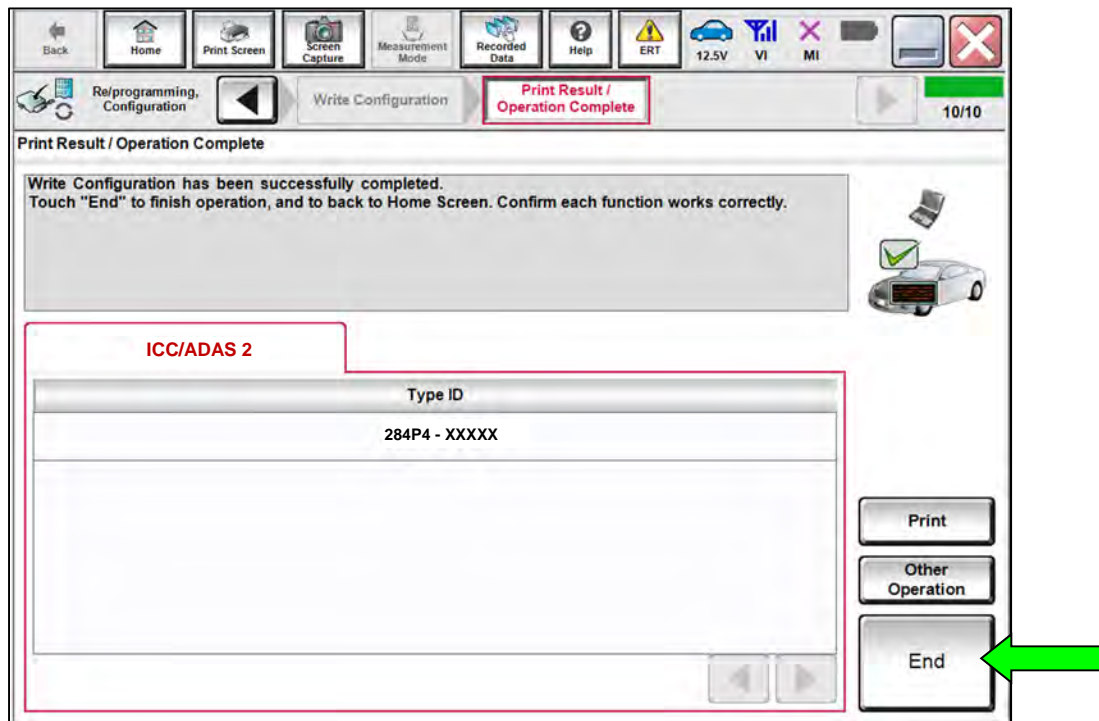


Figure 30

36. Select **Home** (screen not shown).

## Erase DTCs

37. Select **Diagnosis (All Systems)**.

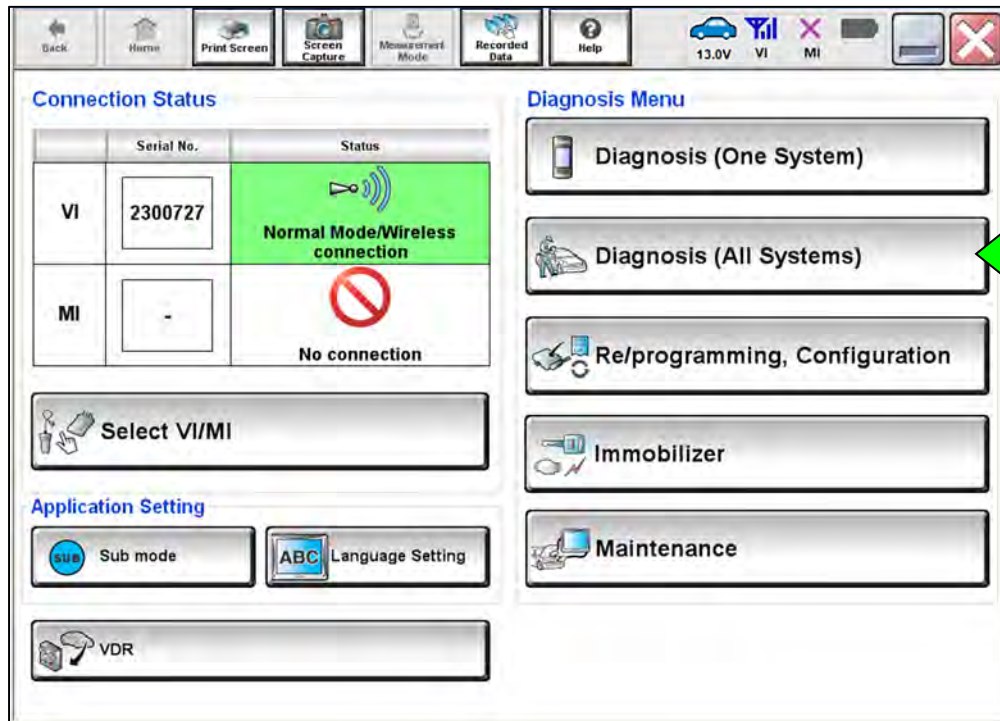


Figure 31

38. Select **ERASE**.

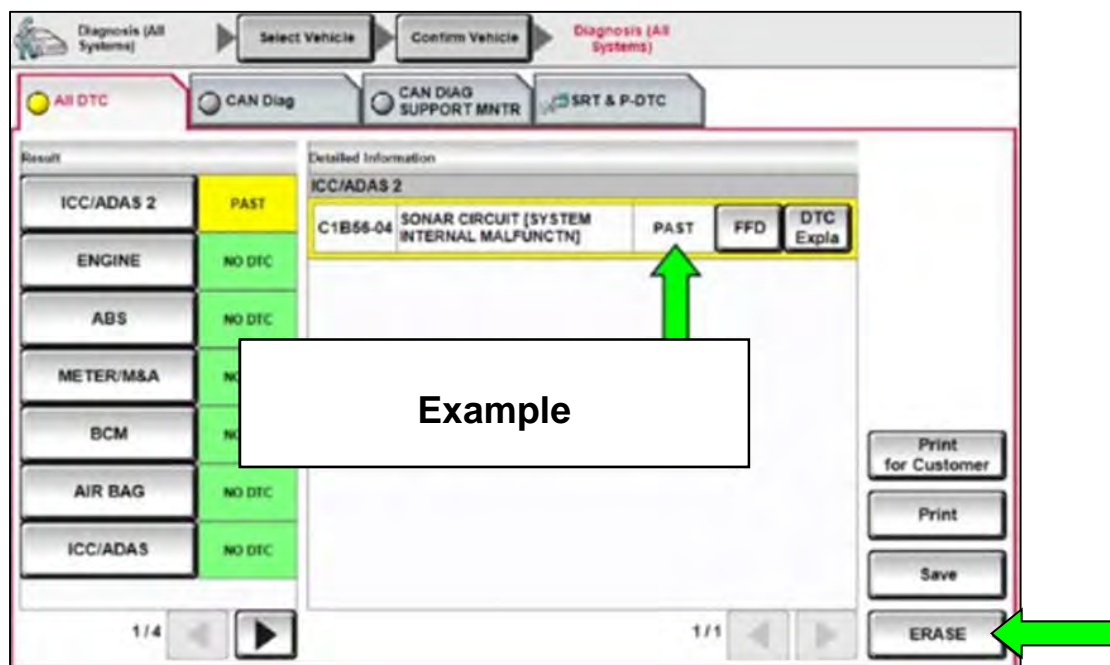


Figure 32

## CLAIMS INFORMATION

Submit a Primary Part (PP) type line claim using the following claims coding:

DESCRIPTION	PFP	OP CODE	SYM	DIA	FRT
Perform Software Check	(1)	RXE4AA	ZE	32	0.3

OR

DESCRIPTION	PFP	OP CODE	SYM	DIA	FRT
Perform Software Check and Reprogram ICC/ADAS	(1)	RXE5AA	ZE	32	0.7

- (1) Refer to the Electronic Parts Catalog and use the Warning Speaker Control Assembly (284P1-\*\*\*\*\*) part number as the Primary Failed Part (PFP).

**HINT:** FRT allows adequate time to access DTC codes. No other diagnostic procedures subsequently required. Do NOT claim any Diagnostic Op Codes with this claim.

## AMENDMENT HISTORY

PUBLISHED DATE	REFERENCE	DESCRIPTION
January 18, 2024	NTB24-005	Original bulletin published
May 9, 2024	NTB24-005A	<b>Table B</b> on page 19 revised, and battery voltage range updated on pages 2, 8, and 11