



TECHNICAL SERVICE BULLETIN

Classification: DA23-001A	Reference: NTB23-044A	Date: May 10, 2024
------------------------------	--------------------------	-----------------------

FALSE ACTIVATION OF AEB OR FCW

This bulletin has been amended. See **AMENDMENT HISTORY** on the last page.
Please discard previous versions of this bulletin.

APPLIED VEHICLES: 2020-2024 Titan/Titan XD (A61)
APPLIED DATES: Built on or before December 1, 2023
APPLIED SYSTEMS: Automatic Emergency Braking/Forward Collision Warning

IF YOU CONFIRM

The customer states they have experienced false activation and/or unexpected braking of the Automatic Emergency Braking (AEB) or Forward Collision Warning (FCW) system,

AND

There are no related DTCs stored.

ACTION

Follow the **SERVICE PROCEDURE** in this bulletin to:

1. Confirm the current ICC/ADAS part number.
2. Reprogram the ICC/ADAS, if applicable.
3. Configure the ICC/ADAS
4. Erase the DTCs.

IMPORTANT: The purpose of **ACTION** (above) is to give you a quick idea of the work you will be performing. You **MUST** closely follow the entire **SERVICE PROCEDURE** as it contains information that is essential to successfully completing this repair.

Bulletins are intended for use by qualified technicians, not 'do-it-yourselfers'. Qualified technicians are properly trained individuals who have the equipment, tools, safety instruction, and know-how to do a job properly and safely. **NOTE:** If you believe that a described condition may apply to a particular vehicle, **DO NOT** assume that it does. See your Nissan dealer to determine if this applies to your vehicle.

SERVICE PROCEDURE

ICC/ADAS Reprogramming

IMPORTANT: Before beginning the following procedure, make sure

- ASSIST on the CONSULT PC has been synchronized (updated) to the current date.
 - All C-III plus software updates (if any) have been installed.
 - The CONSULT PC is connected to the internet via a cable or Wi-Fi.
 - Later in the procedure you will be required to enter your username and password.
 - If you do not know your username and password, contact your service manager.
 - A screen print for warranty documentation can be done from the CONSULT PC during this **SERVICE PROCEDURE** while still connected to the vehicle.
 - No diagnostic trouble codes (DTCs) are stored.
1. Connect the Vehicle Interface (VI) to the vehicle.
 - Make sure to use the correct VI for the CONSULT PC.

NOTICE

Make sure the VI is securely connected. If the VI connection is loose during reprogramming, the process will be interrupted and the control unit may be damaged.

2. Connect the AC Adapter to the CONSULT PC.

NOTICE

Be sure to connect the AC Adapter. If the CONSULT PC battery voltage drops during reprogramming, the process will be interrupted and the control unit may be damaged.

3. Connect a battery maintainer or smart charger set to reflash mode or a similar setting.

NOTICE

To avoid damage to the control unit, ensure a battery maintainer or smart charger is connected. The battery voltage must be between 12.0V and 13.5V during reprogramming.

4. Turn OFF all external Bluetooth® devices (e.g., cell phones, printers, etc.) within range of the CONSULT PC and the VI.

NOTICE

If Bluetooth® signal waves are within range of the CONSULT PC and the VI during reprogramming, reprogramming may be interrupted and the control unit may be damaged.

- Turn the ignition ON with the engine OFF.

NOTICE

To avoid damage to the control unit, the engine must not start or run during the reprogramming procedure.

- Turn OFF all vehicle electrical loads such as exterior lights, interior lights, HVAC, blower, rear defogger, audio, NAVI, seat heater, steering wheel heater, etc.
- Turn ON the hazard warning lamps.
- Start CONSULT-III plus on the CONSULT PC.
- If prompted, select **USA/CANADA Dealers** from the drop-down menu, and then select **OK**.
- Login using your NNAnet credentials.

IMPORTANT: If not prompted to enter your username and password, the CONSULT PC may not be connected to Wi-Fi. Close C-III plus, confirm the CONSULT PC is connected to Wi-Fi, and then reopen C-III plus.

- Wait for the VI to be recognized (Figure 1).
 - The serial number will be displayed when the VI is recognized.

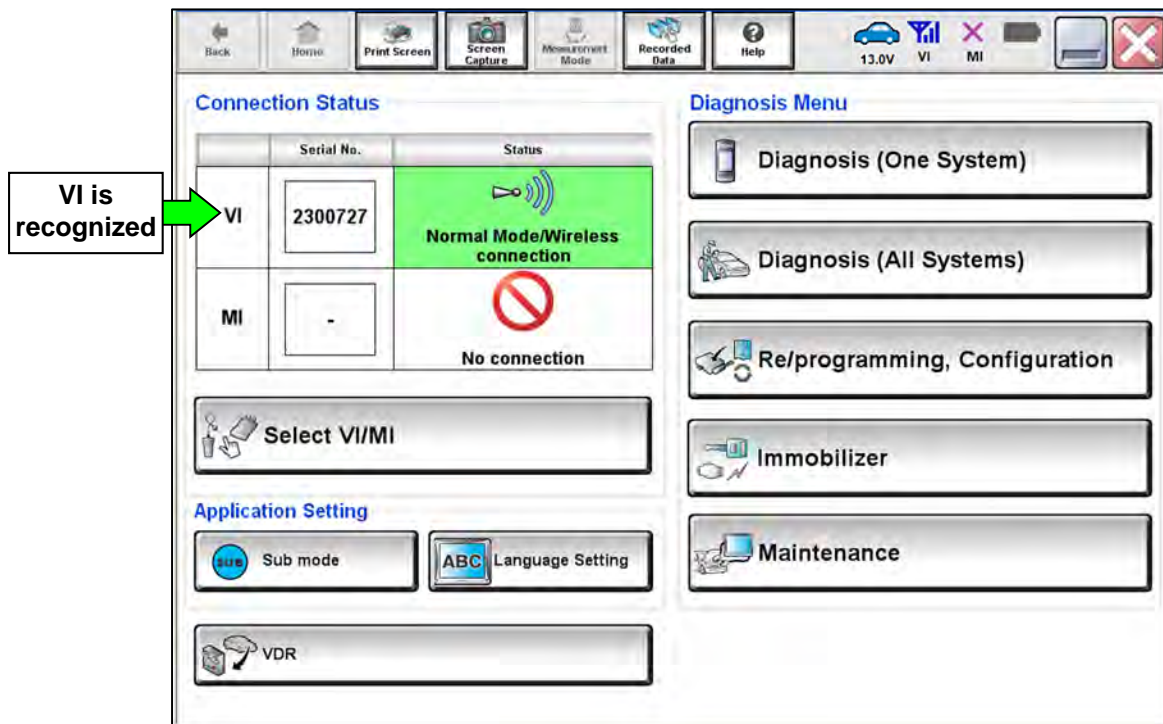


Figure 1

12. Select **Re/programming, Configuration**.

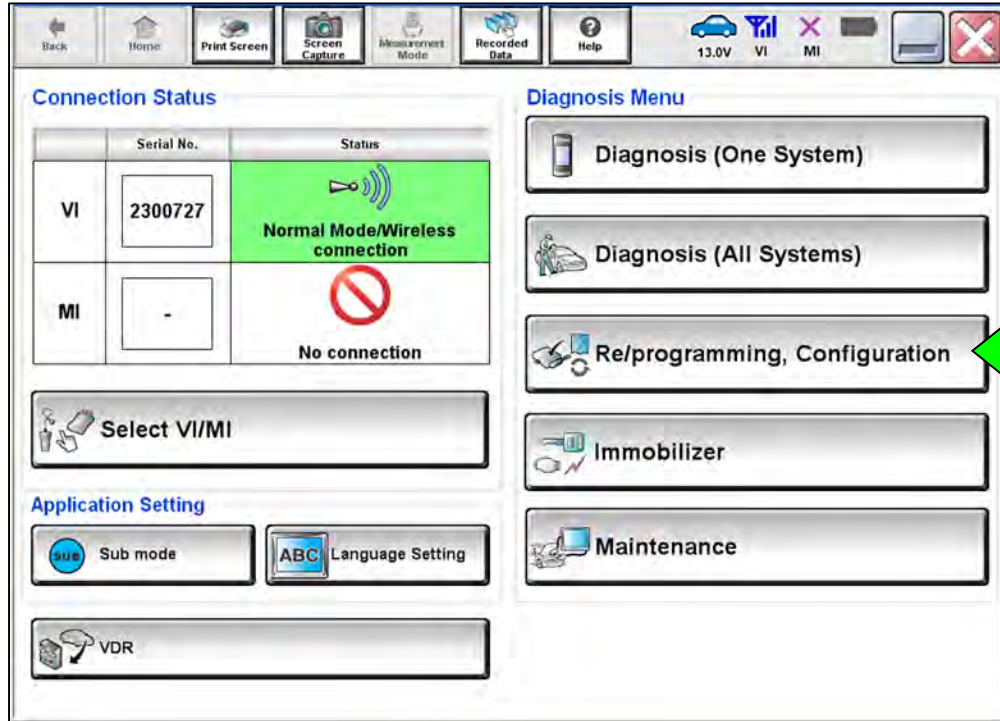


Figure 2

13. Use the arrows (if needed) to view and read all precautions.

14. Check the box confirming the precautions have been read.

15. Select **Next**.

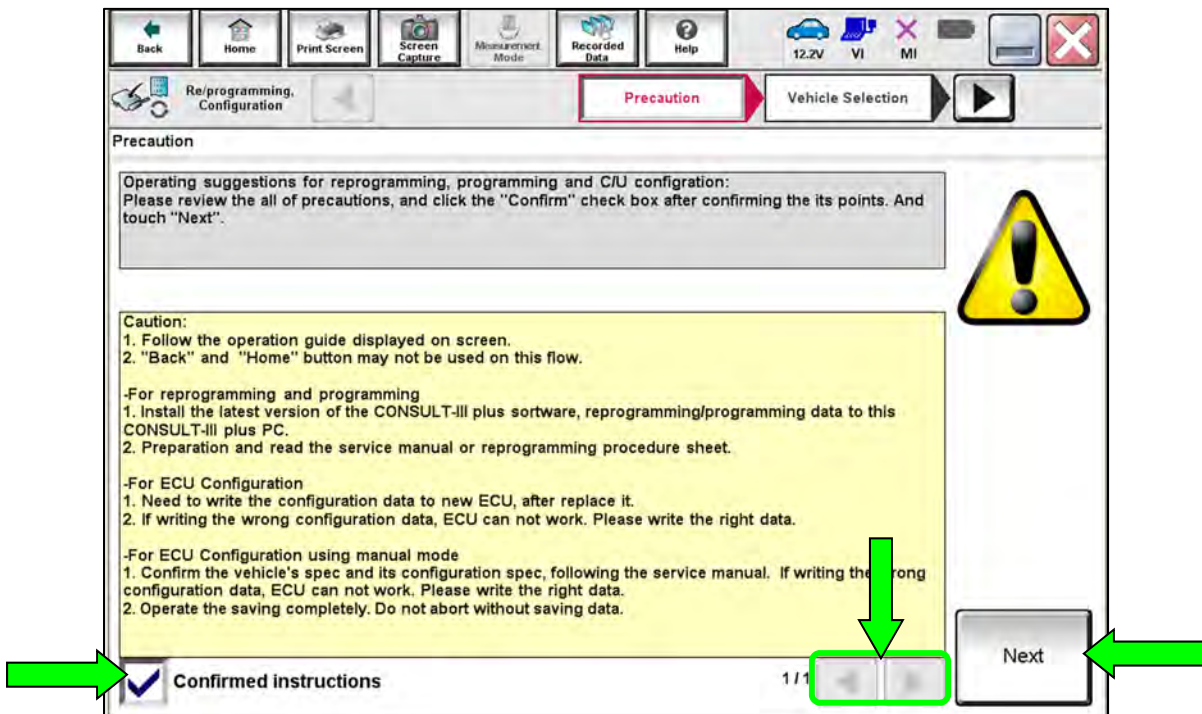


Figure 3

16. Select **Automatic Selection(VIN)**.

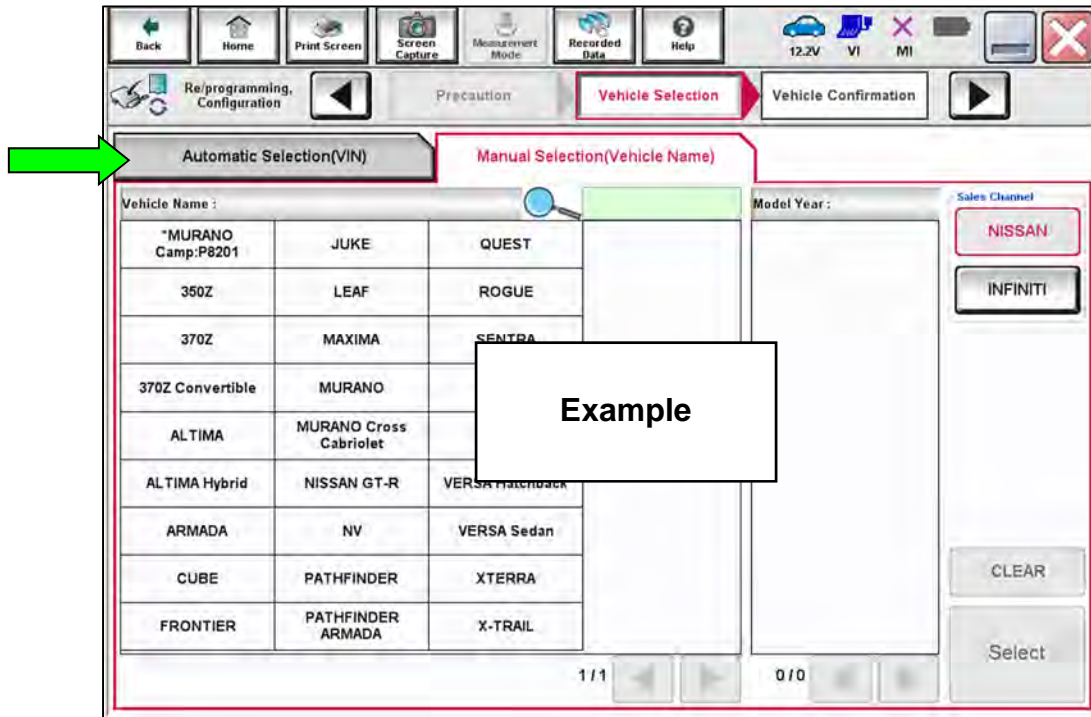


Figure 4

17. Make sure **VIN or Chassis #** matches the vehicle's VIN.

18. If the correct VIN is displayed, select **Confirm**.

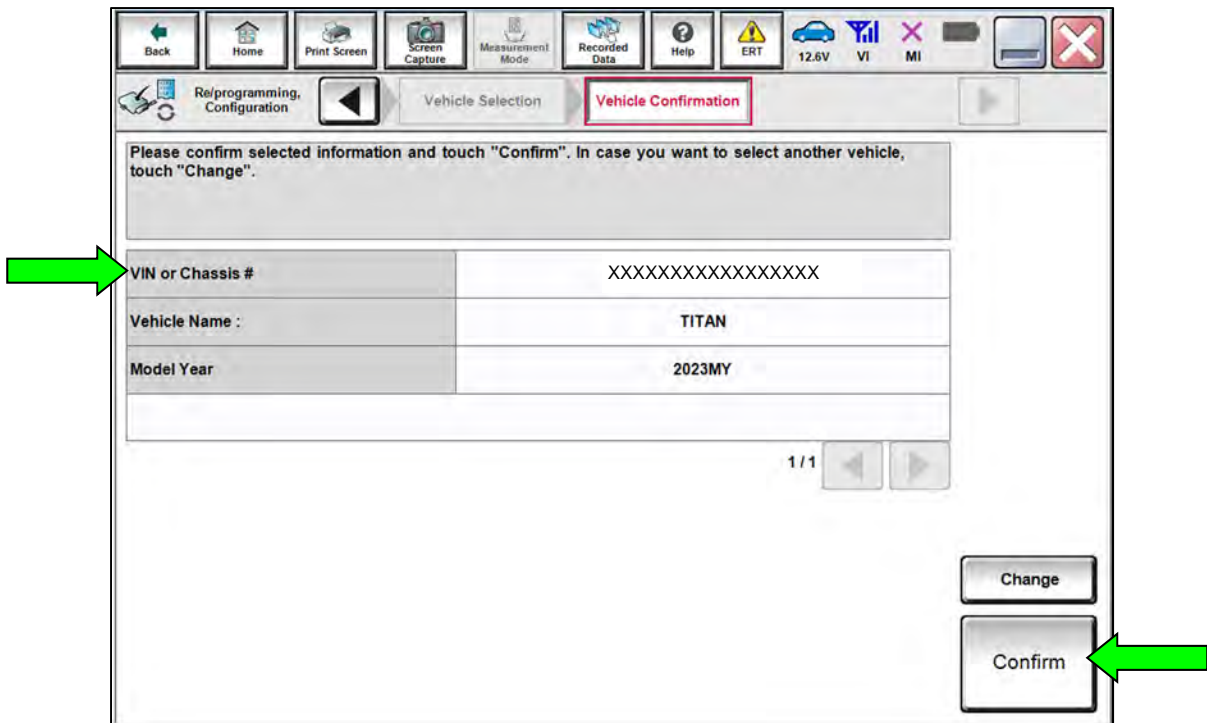


Figure 5

19. Select **Confirm**.

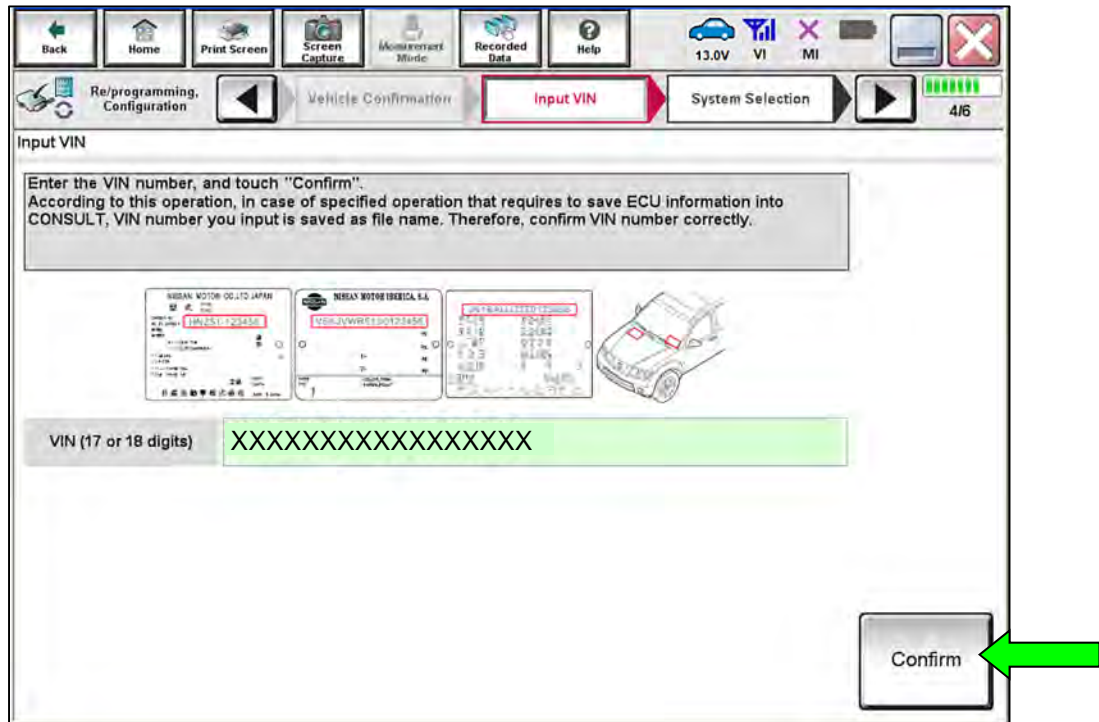


Figure 6

20. Select **ICC/ADAS**.

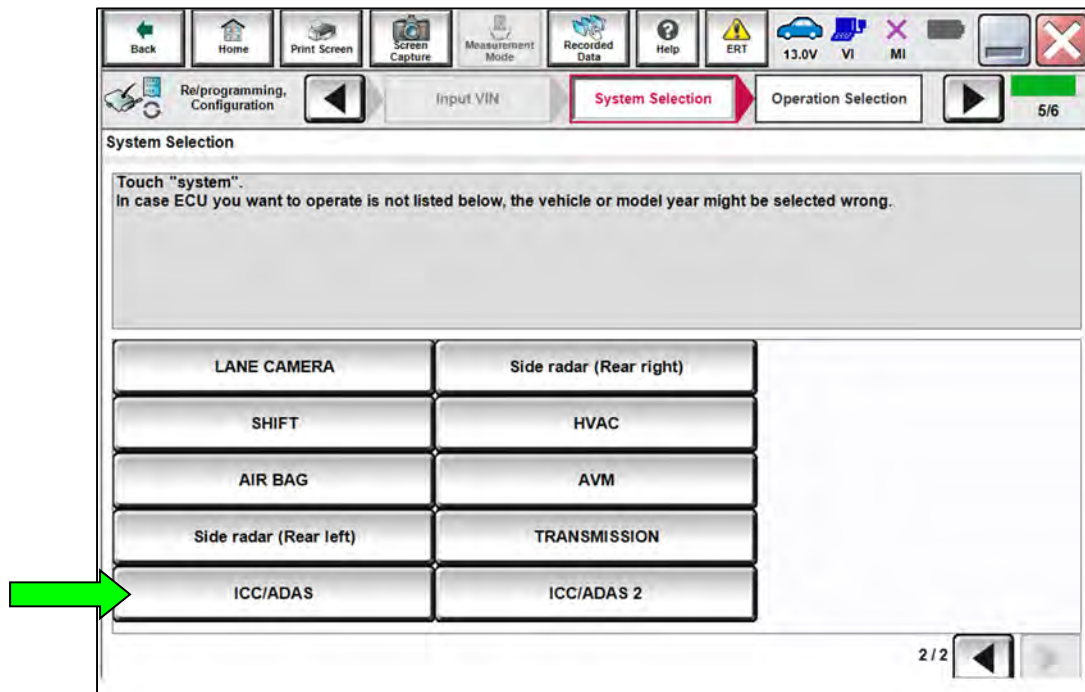


Figure 7

21. Select **Reprogramming**.

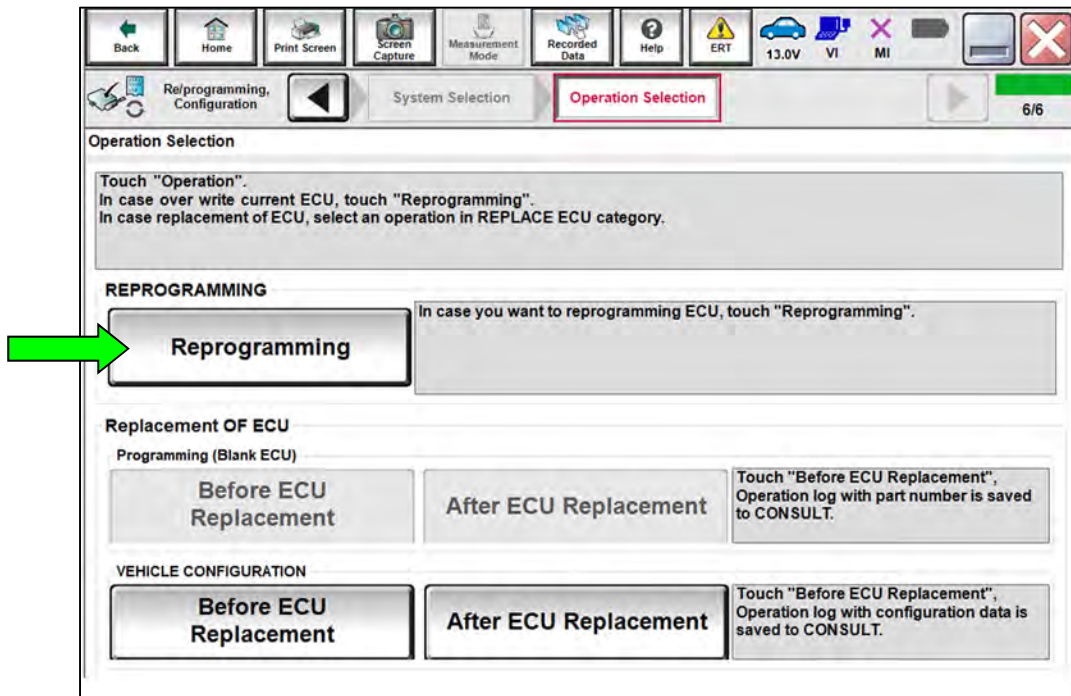


Figure 8

22. When you get to the screen shown in Figure 9, confirm that a reprogram is available as follows:

- a. Find the ICC/ADAS **Part Number** and write it on the repair order.

HINT: This is the current ICC/ADAS part number (P/N).

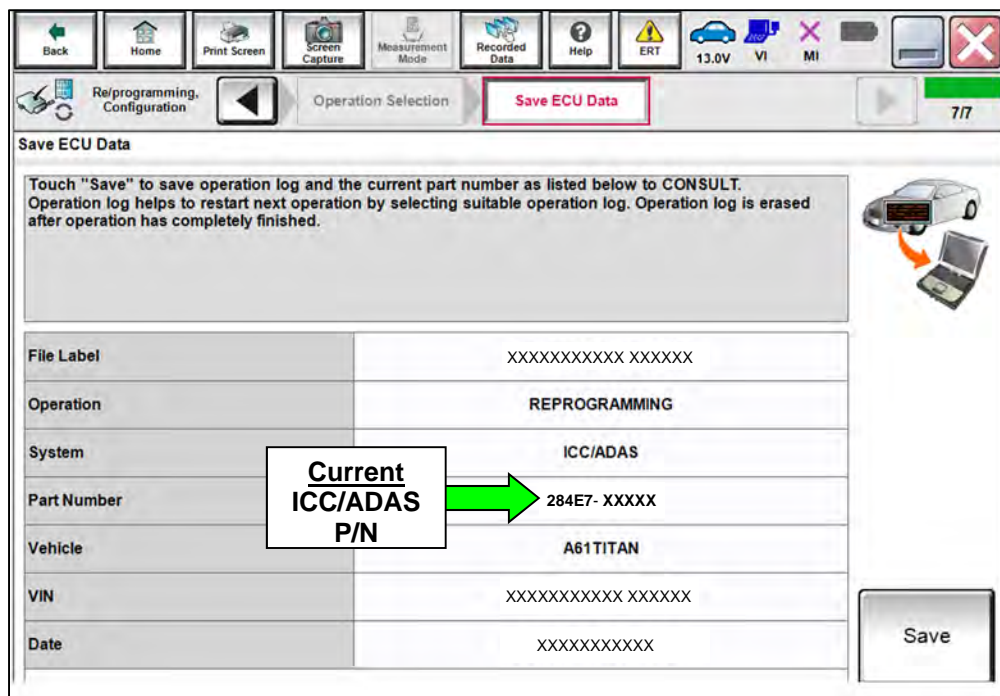


Figure 9

- b. Compare the P/N you wrote down to the numbers in the **CURRENT ICC/ADAS PART NUMBER** column in **Table A**.
 - o If there is a match in **Table A**, continue with the reprogramming procedure.
 - o If there is not a match, in **Table A**, this bulletin does not apply. See the ESM (Electronic Service Manual) for further diagnostic information.

Table A

CURRENT ICC/ADAS PART NUMBER: 284E7-
9FW0A, 9FW1A, 9FW2A, 9FW3A, 9FW5A

23. Follow the on-screen instructions to navigate C-III plus and reprogram the ICC/ADAS control unit.

24. Select **Save**.

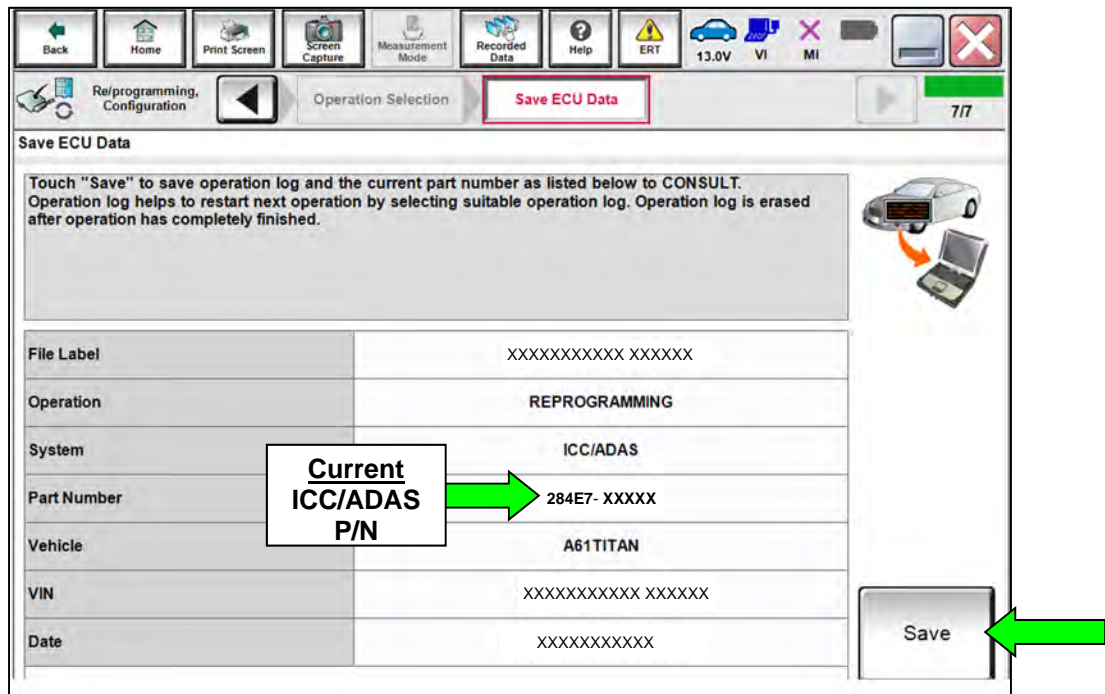


Figure 10

25. Use the arrows (if needed) to view and read all precautions.
26. Check the box confirming the precautions have been read.
27. Select **Next**.

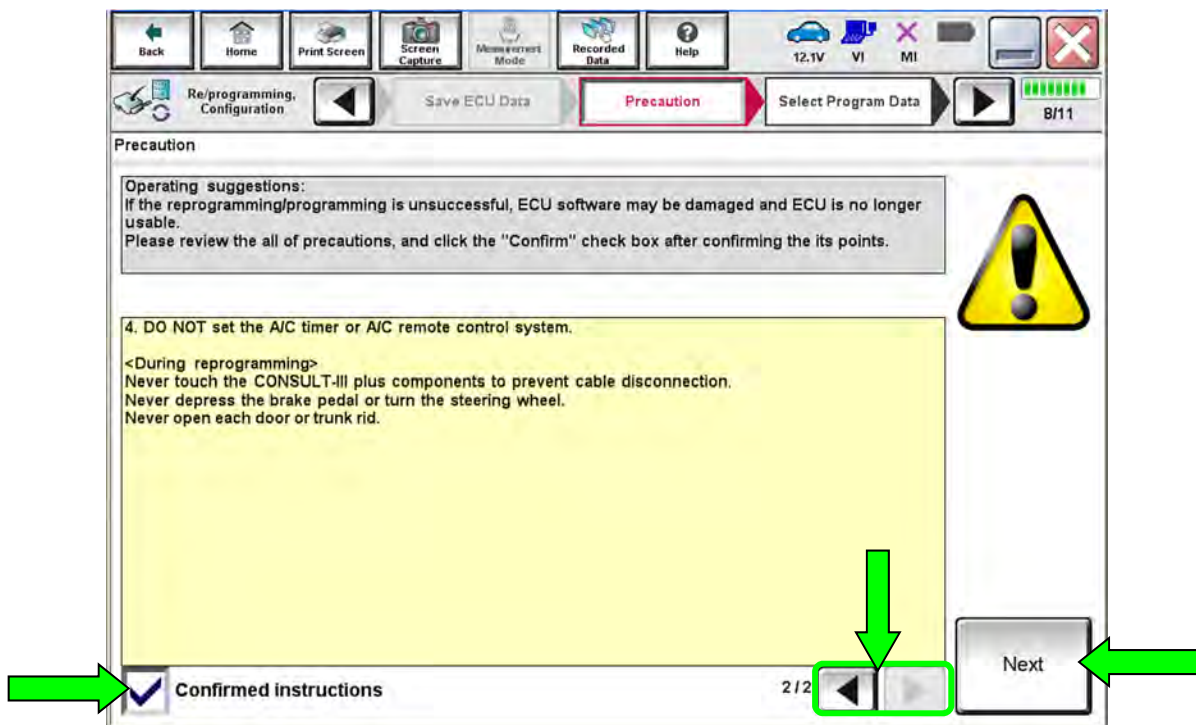


Figure 11

28. Compare the **Current Part Number** and the **Part Number After Reprogramming**. They should be different.

29. Select **Next**.

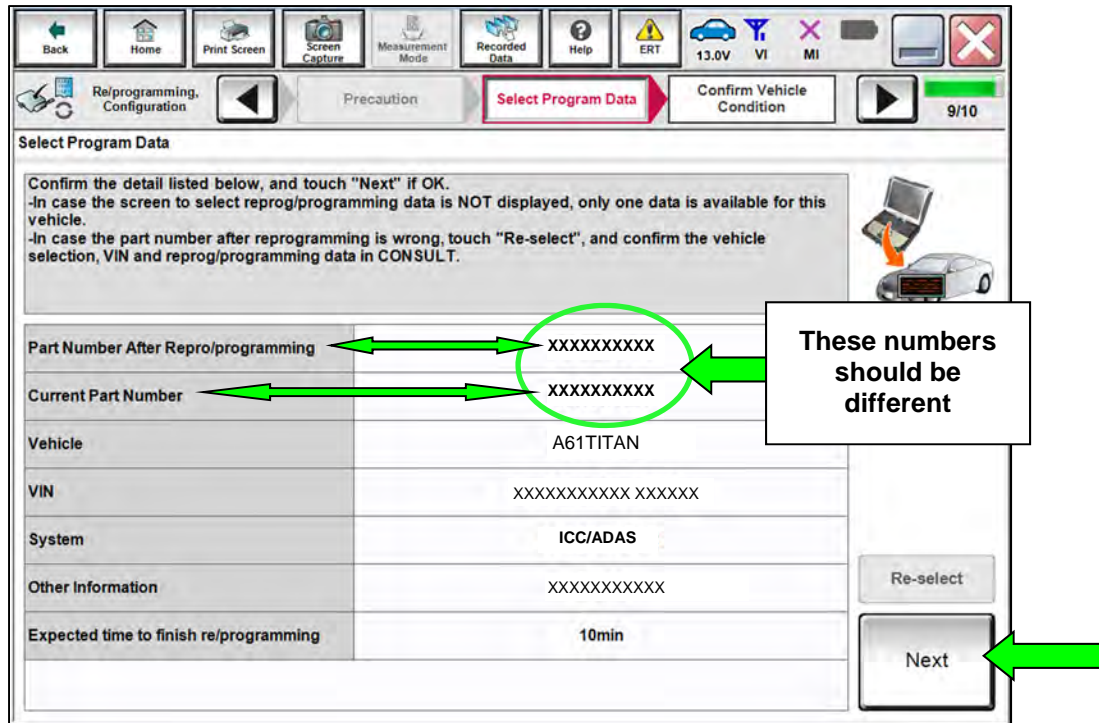


Figure 12

HINT:

- In some cases, more than one new P/N for reprogramming is available.
 - If more than one new P/N is available, the screen in Figure 13 displays.
 - Select and use the reprogramming option that does **not** have the message “Caution! Use ONLY with NTBXX-XXX”.
- If you get this screen and it is blank (no reprogramming listed), it means there is no reprogramming available for this vehicle. Close C-III plus and refer back to ASIST for further diagnosis.

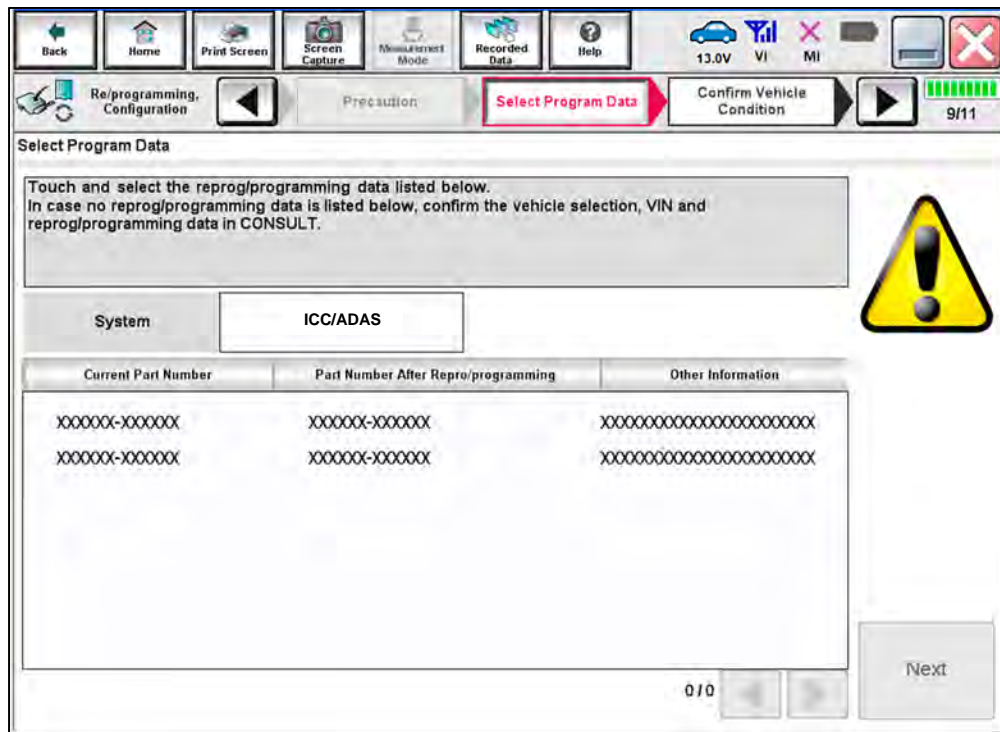


Figure 13

30. Make sure **OK** is highlighted **green** (battery voltage must be between **12.0** and **13.5** volts).

NOTICE

To avoid damage to the control unit, ensure a battery maintainer or smart charger is connected. The battery voltage must be between 12.0V and 13.5V during reprogramming.

31. Select **Next**.

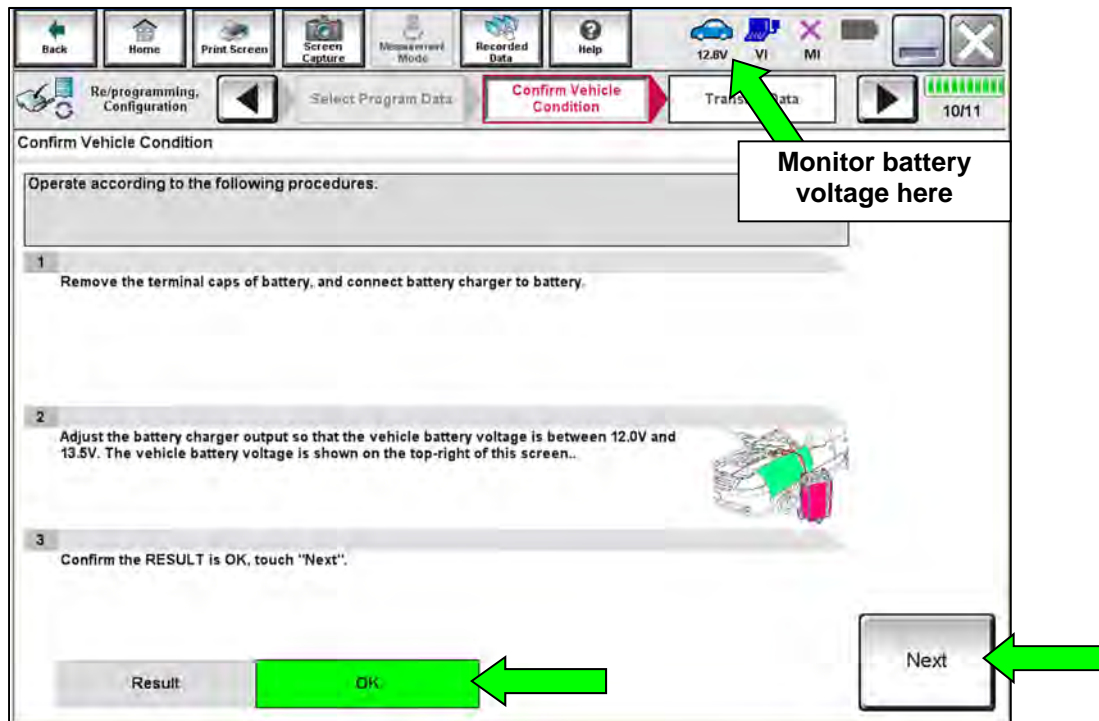


Figure 14

32. Confirm all **Judgment** items are “OK”, and then select **Start**.

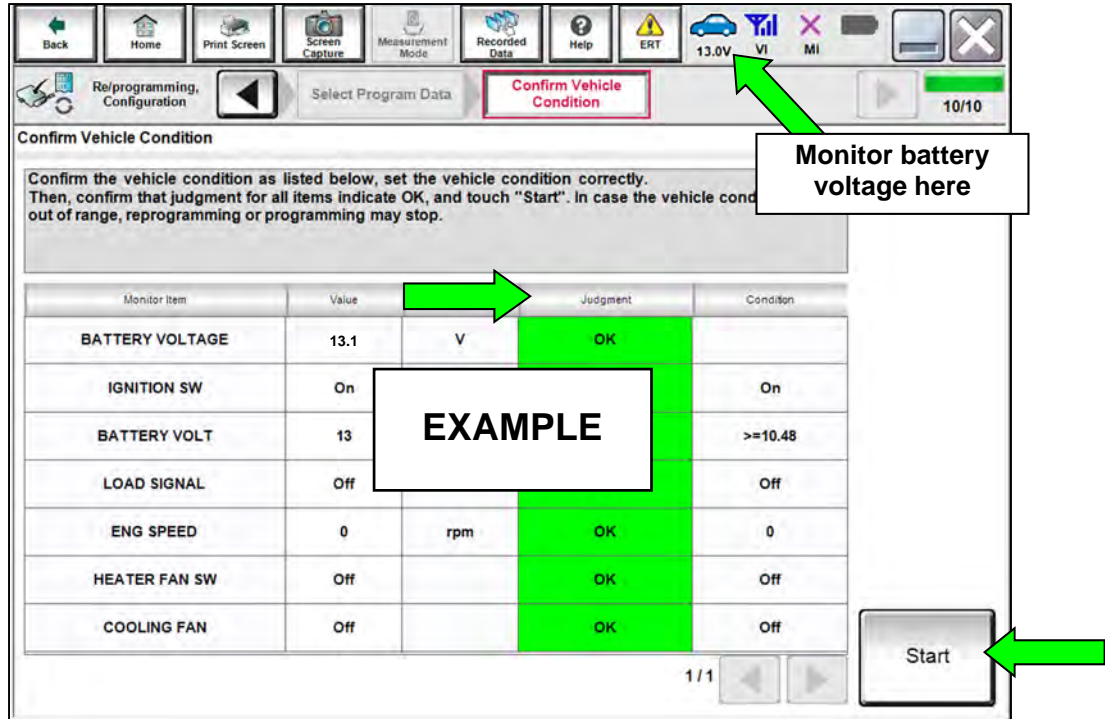


Figure 15

33. Wait for both progress bars to complete.

- When the screen in Figure 17 displays, the reprogramming is complete.
- If the screen in Figure 17 does not display (indicating that reprogramming did not complete), refer to **ICC/ADAS Recovery** on the next page.

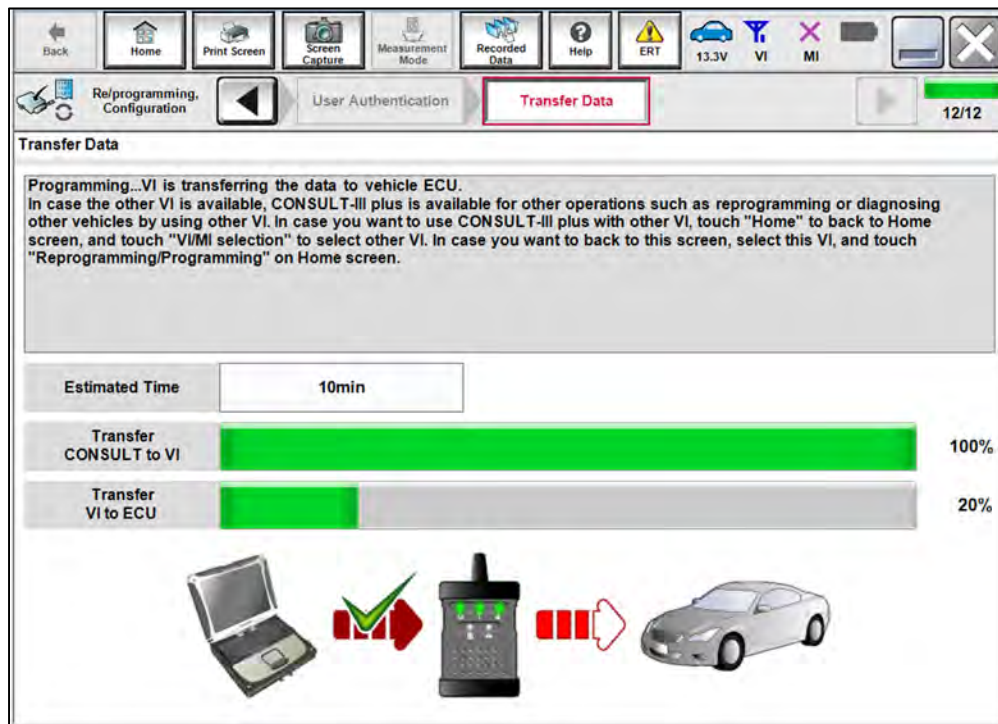


Figure 16

34. Select **Next**.

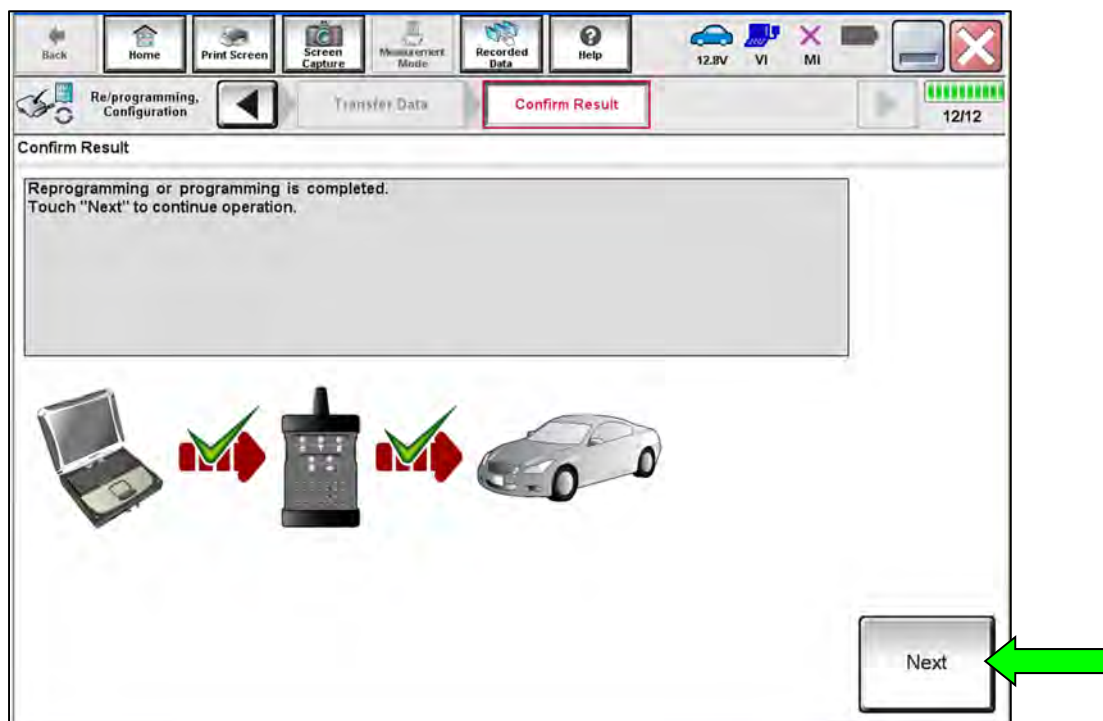


Figure 17

HINT: Additional steps/operations are required before C-III plus will provide the final reprogramming confirmation report. Continue with the reprogramming procedure on page 16.

ICC/ADAS Recovery

Do not disconnect the VI or shut down CONSULT if reprogramming does not complete.

If reprogramming does not complete and the “!” icon displays, as shown in Figure 18:

- Check battery voltage (12.0 - 13.5 V).
- Ignition is ON, engine OFF. Or if EV in Ready Mode.
- External Bluetooth® devices are OFF.
- **All** electrical loads are OFF.
- Select **Retry** and follow the on screen instructions.
- Retry may not go through on first attempt and can be selected more than once.

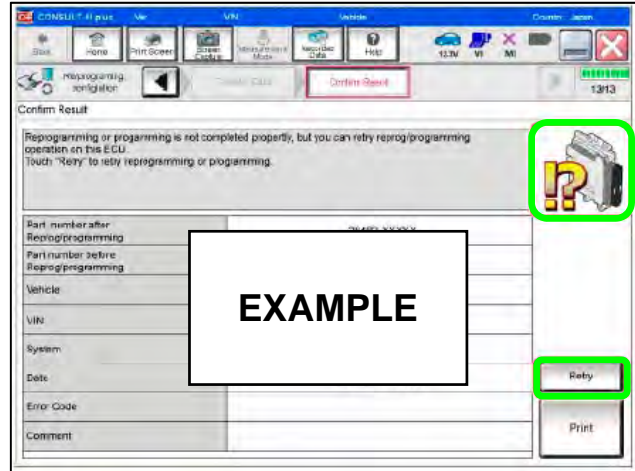


Figure 18

If reprogramming does not complete and the “X” icon displays, as shown in Figure 19:

- Check battery voltage (12.0 - 13.5 V).
- CONSULT A/C adapter is plugged in.
- Ignition is ON, engine OFF. Or if EV in Ready Mode.
- Transmission is in Park.
- All CONSULT VI cables are securely connected.
- All C-III plus updates are installed.
- Select **Home**, and restart the reprogram procedure from the beginning.

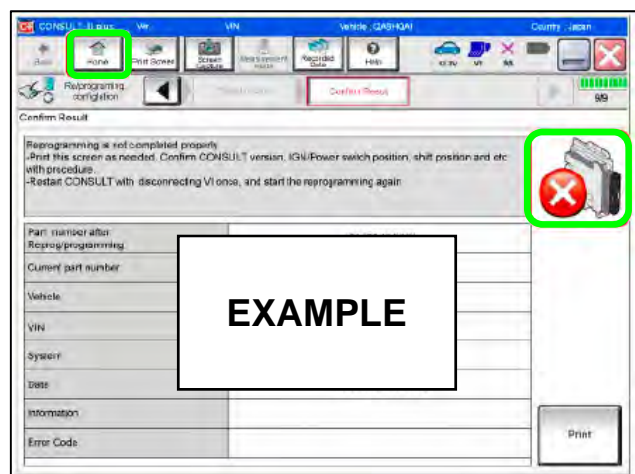


Figure 19

35. **Erase All DTCs** as follows:

- a. Turn the ignition OFF.
- b. Turn the ignition ON.

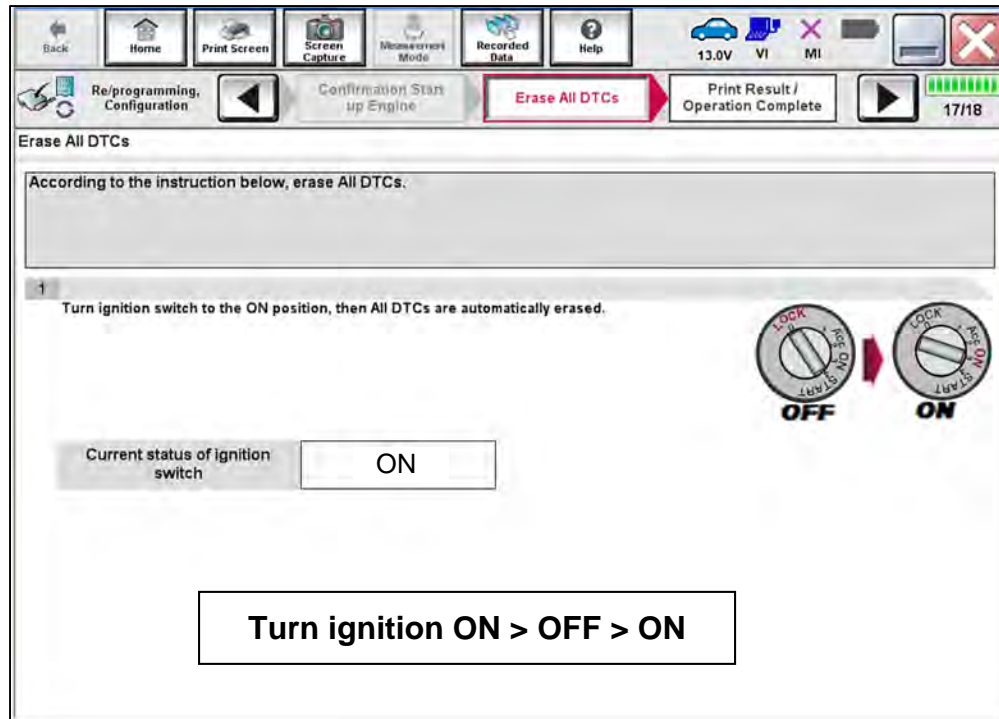


Figure 20

HINT: When the entire reprogramming process is complete, the screen in Figure 21 will display.

36. Print a copy of the screen below (Figure 21) and attach it to the repair order for warranty documentation.

HINT: If you cannot print the screen:

- a. Select **Screen Capture**.
- b. Name the file.
- c. Save the file in My Documents.
 - A copy of the screen is now saved in the CONSULT PC. It can be retrieved and printed at a later time.

37. Select **Confirm**.

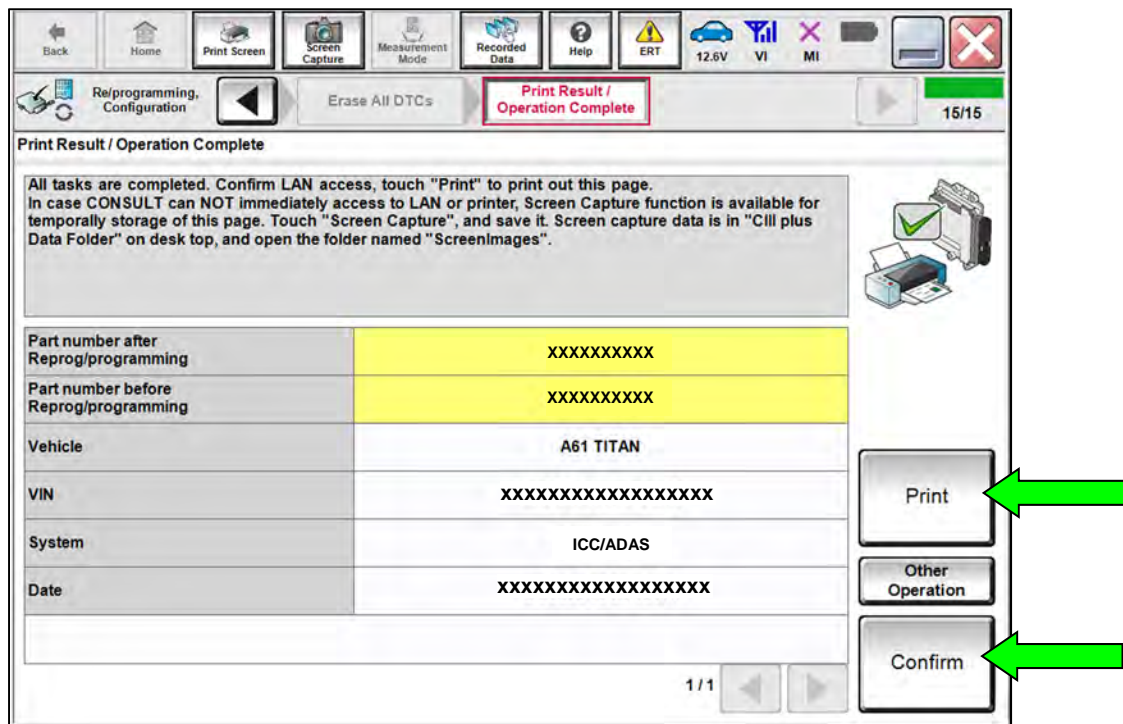


Figure 21

38. Select **Home** (screen not shown).

ICC/ADAS Configuration

39. Select **Re/programming, Configuration**.

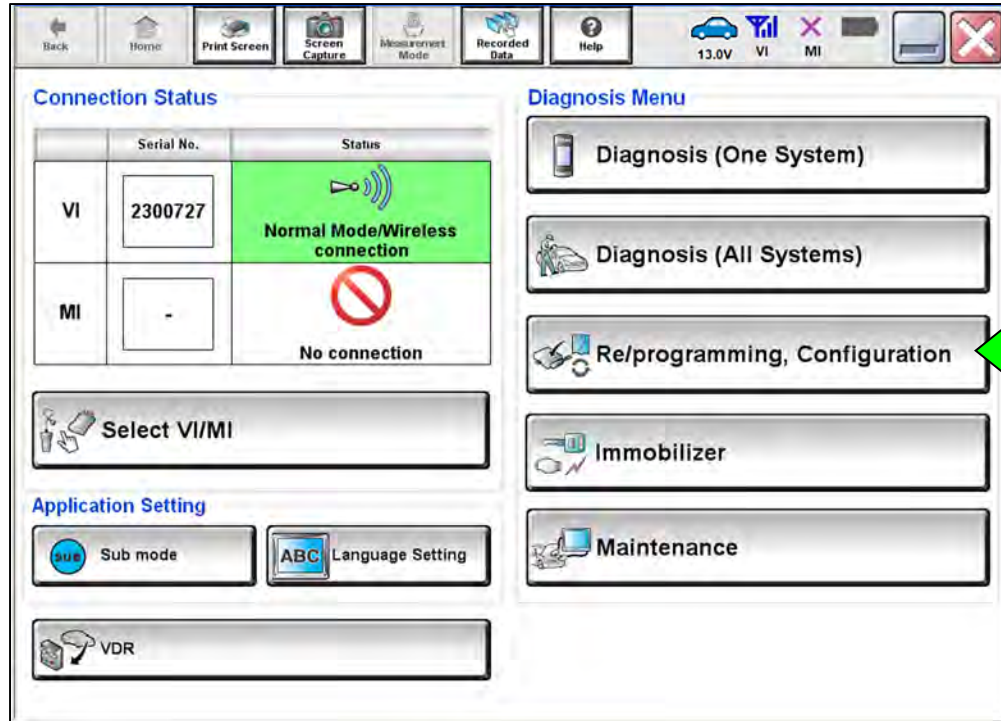


Figure 22

40. Read the precautions on the C-III plus screen, check the box for **Confirmed Instructions**, and then select **Next**.

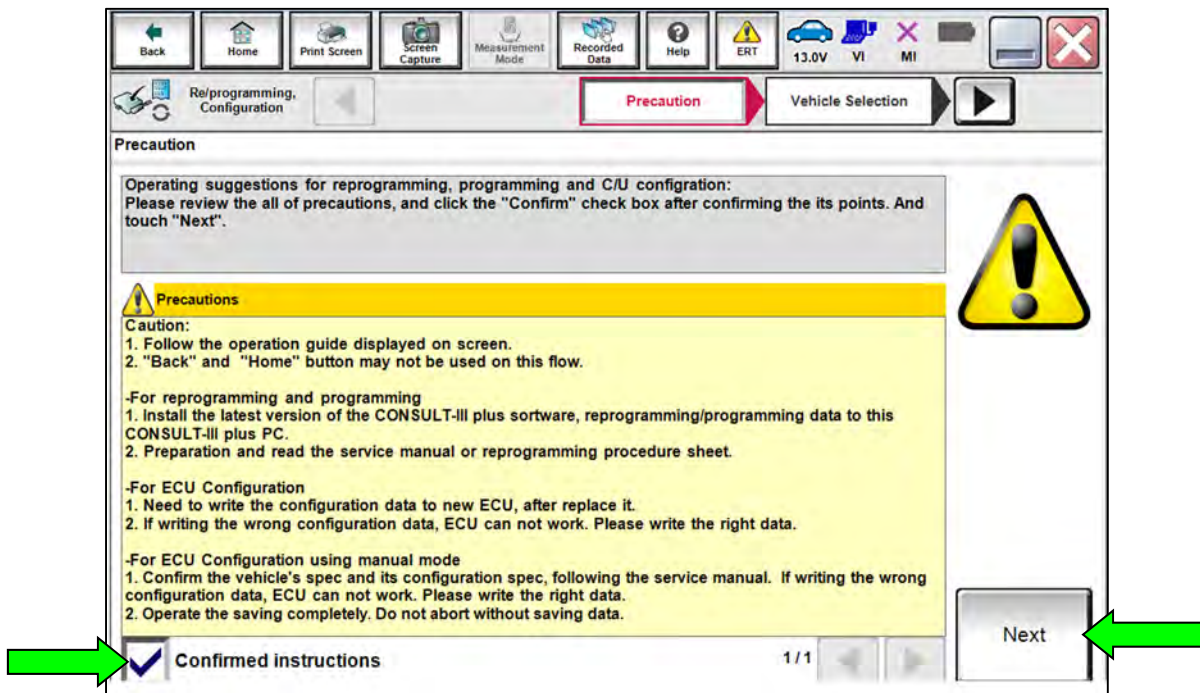


Figure 23

41. Select **Automatic Selection(VIN)**.

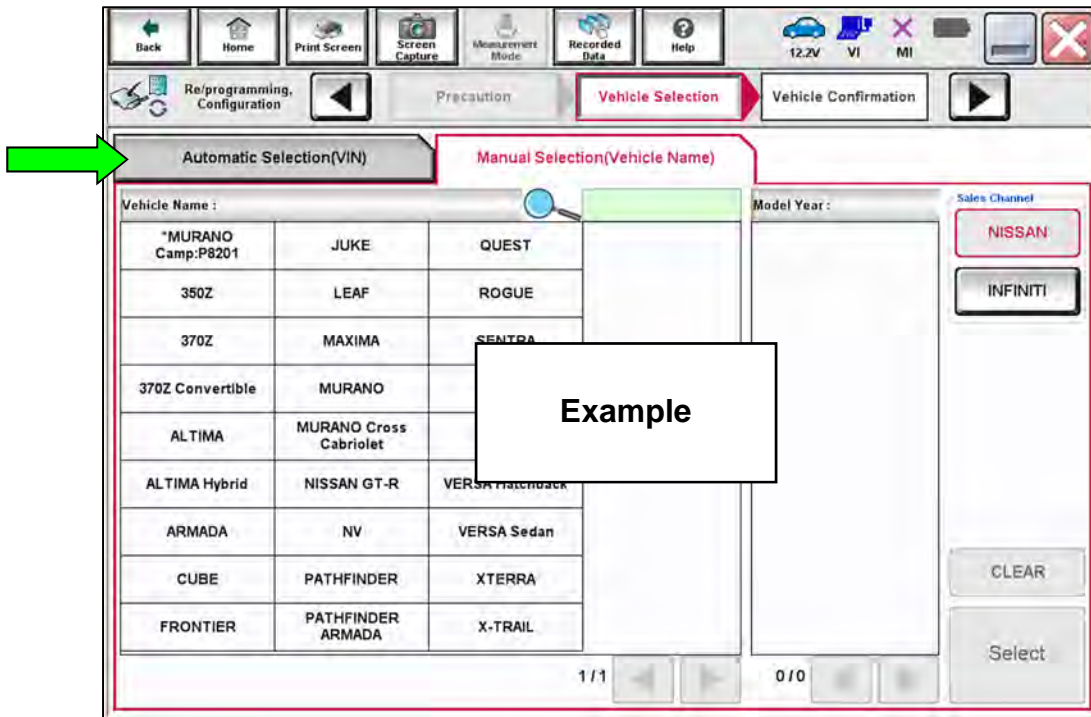


Figure 24

42. Make sure **VIN or Chassis #** matches the vehicle's VIN.

43. If the correct VIN is displayed, select **Confirm**.

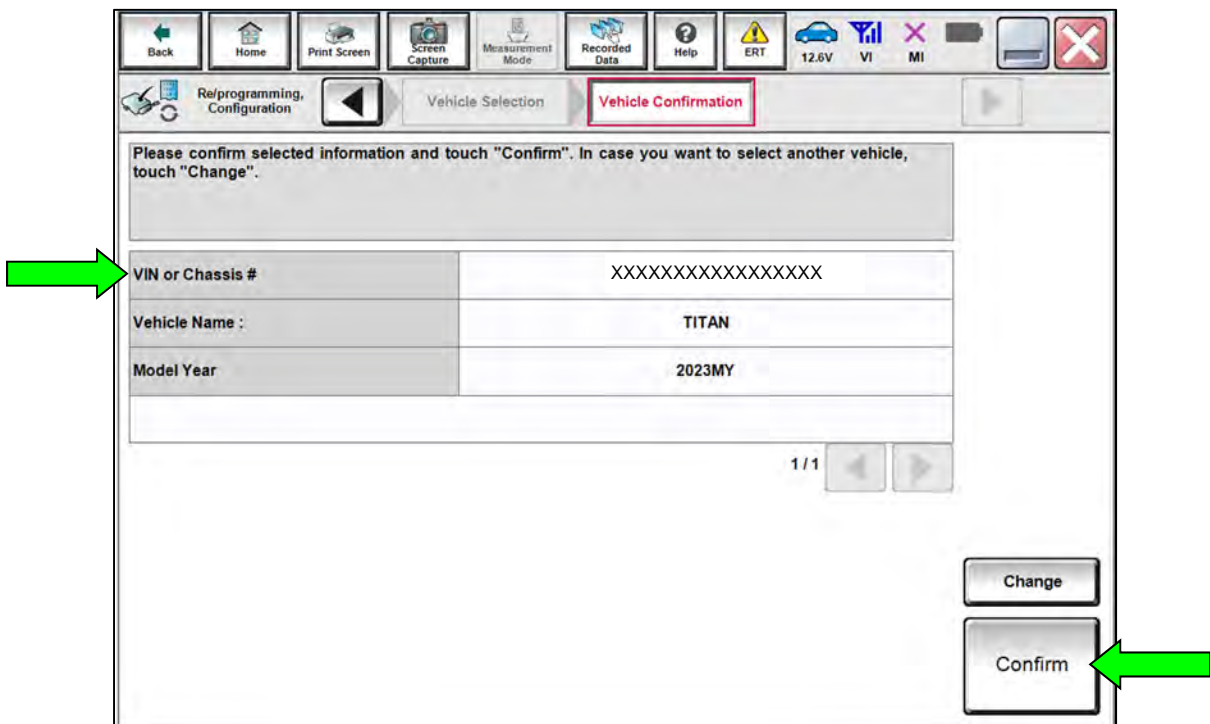


Figure 25

44. Select **Confirm**.

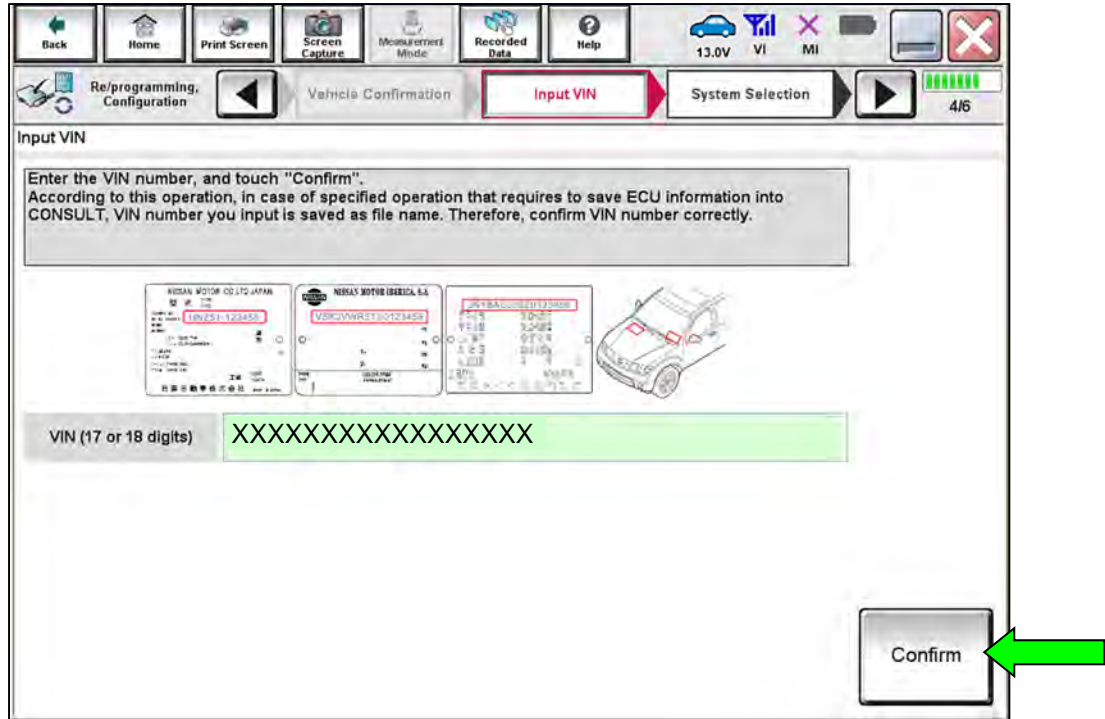


Figure 26

45. Select **ICC/ADAS**.

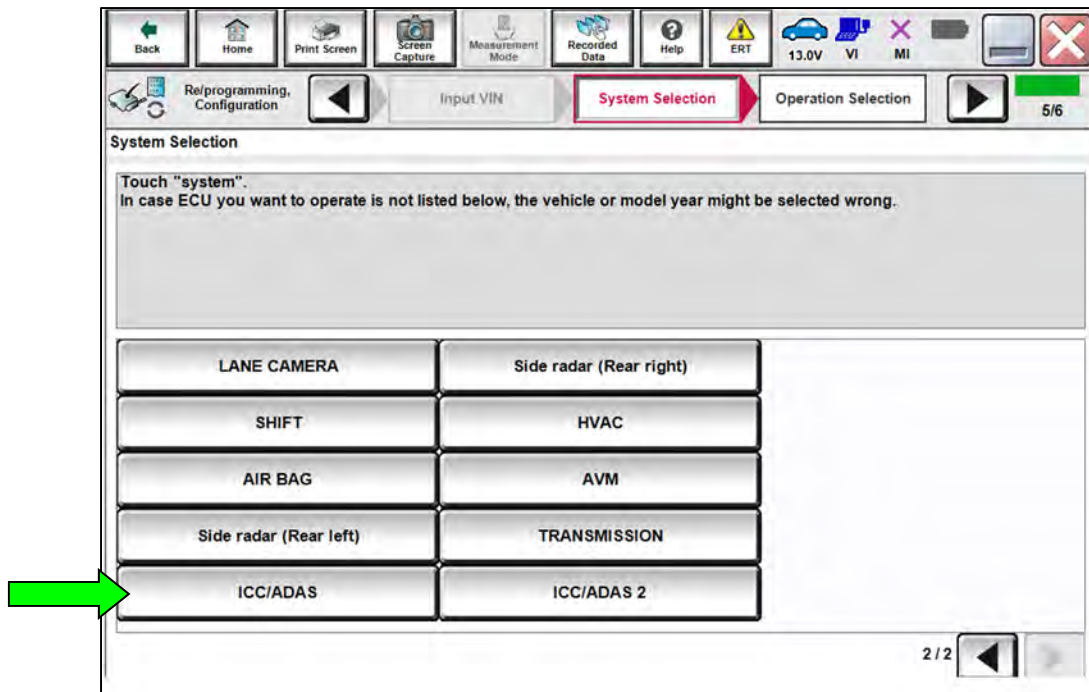


Figure 27

46. Select **After ECU Replacement** under **VEHICLE CONFIGURATION**.

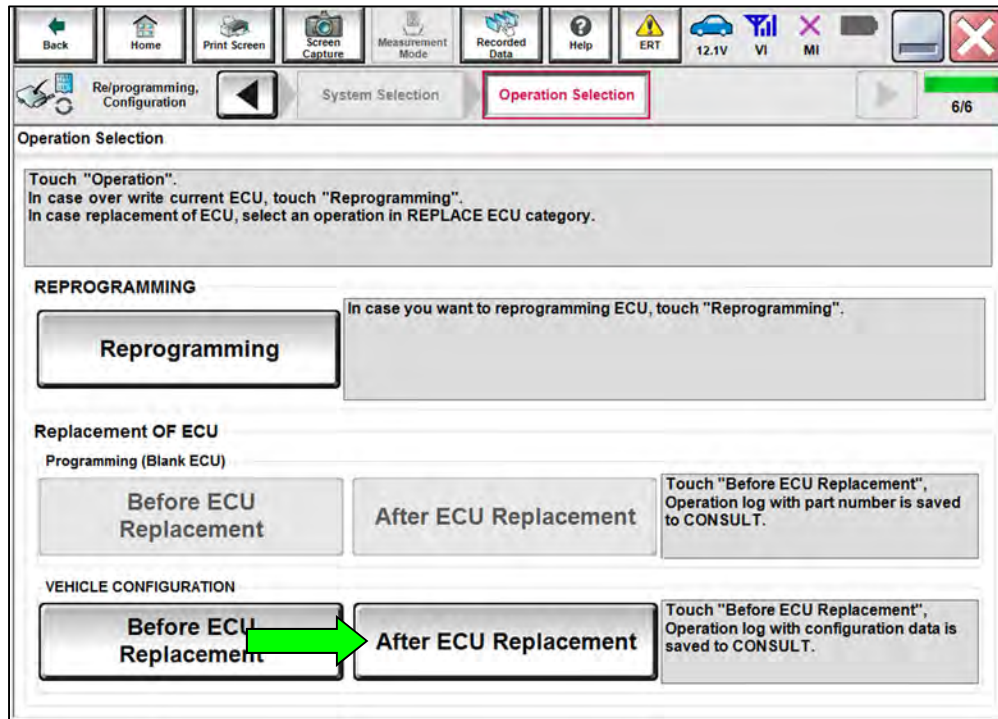


Figure 28

47. Select **Manual selection**.

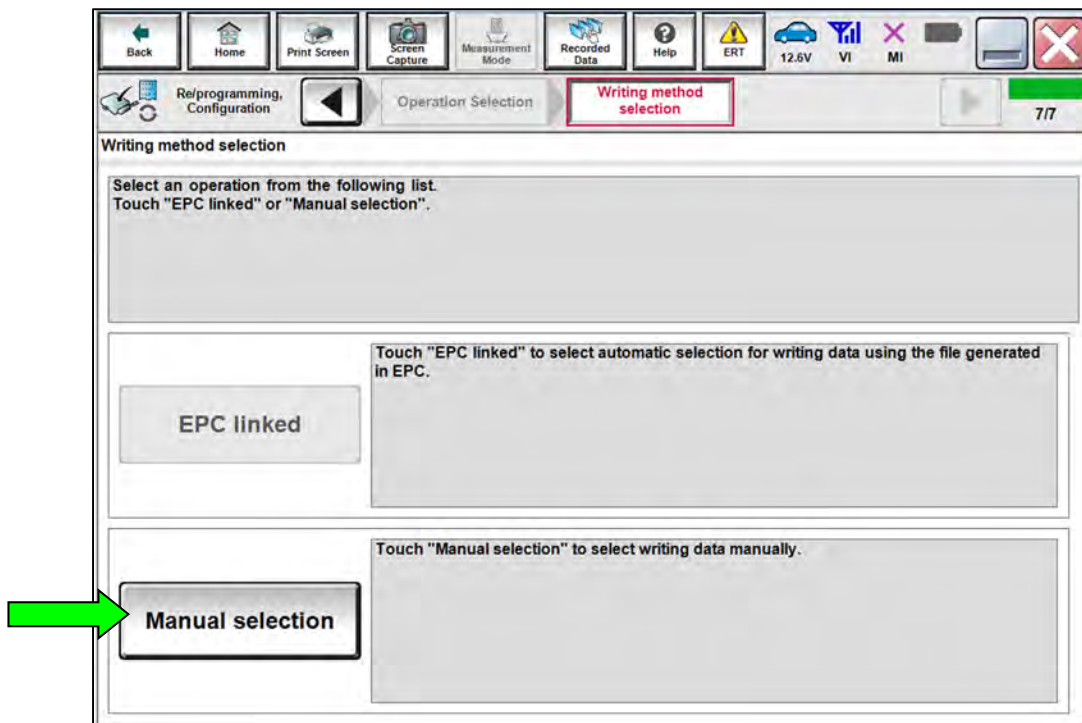


Figure 29

48. Refer to the Electronic Parts Catalog (EPC) to determine the current or “OLD” Type ID (EPC description is **ROM DATA-ADAS**) for the vehicle VIN. Write the “OLD” Type ID on the repair order.
49. Using the vehicle’s “OLD” Type ID listed in the EPC, reference **Table B** to select the “NEW (Latest Type ID)”.

HINT: The vehicle’s “NEW ICC/ADAS PART NUMBER” can be helpful to confirm the applicable “NEW (Latest Type ID)” (refer to **Part Number After Repro/programming** from Figure 21 on page 17).

Table B

EPC DESCRIPTION	ICC/ADAS PART NUMBER 284E7-		EPC DESCRIPTION	Type ID 284E9-	
	OLD	NEW		OLD	NEW (Latest Type ID)
CONT ASSY- ADAS	9FW0A	9FW0B	ROM DATA- ADAS	9FV0A	9FV5A
	9FW5A	9FW5B		9FV0B	9FV5B
	9FW1A	9FW1B		9FV1A	9FV5E
				9FV0C	9FV5C
				9FV0D	9FV5D
				9FV3A	9FV6B
	9FW2A	9FW2B		9FV3B	9FV6C
				9FV4B	9FV6D
	9FW3A	9FW3B		9FV4D	9FV7B
9FV3C			9FV6E		
		9FV4C	9FV7A		
		9FV1D	9FV6A		

50. Either enter the last two (2) characters of the **NEW (Latest Type ID)** into the **Latest Type ID search** box (Figure 30) or manually select the correct **Latest Type ID** that was found in **Table B** (page 22).
51. Select **Next**.

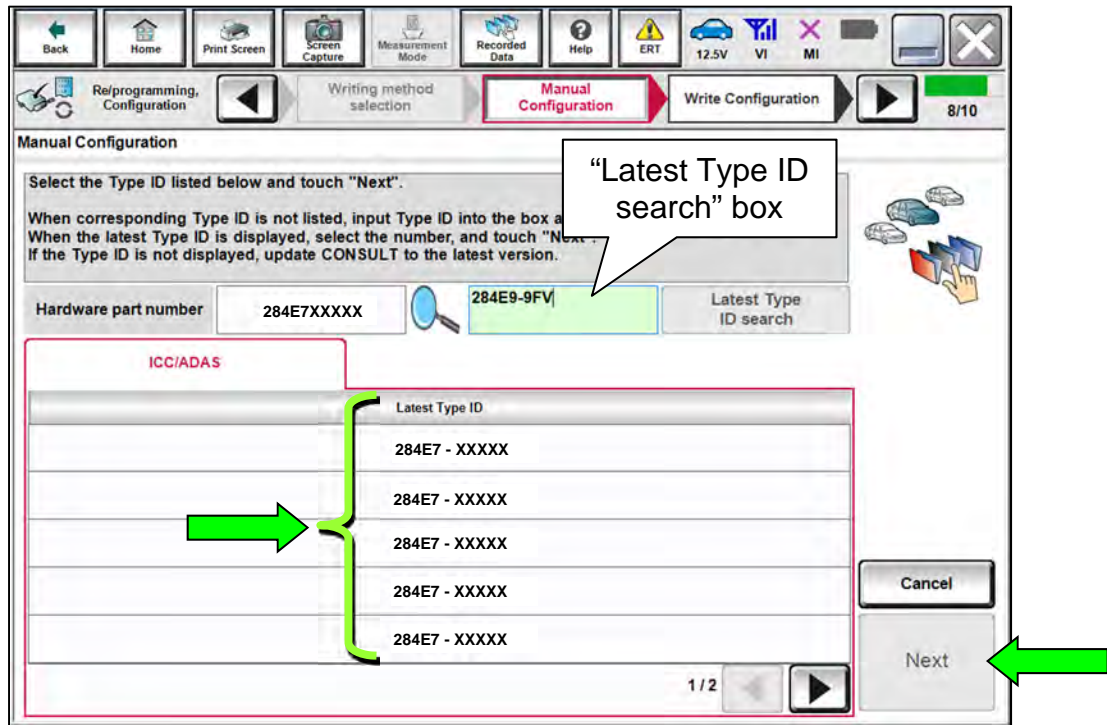


Figure 30

52. Select **OK**.

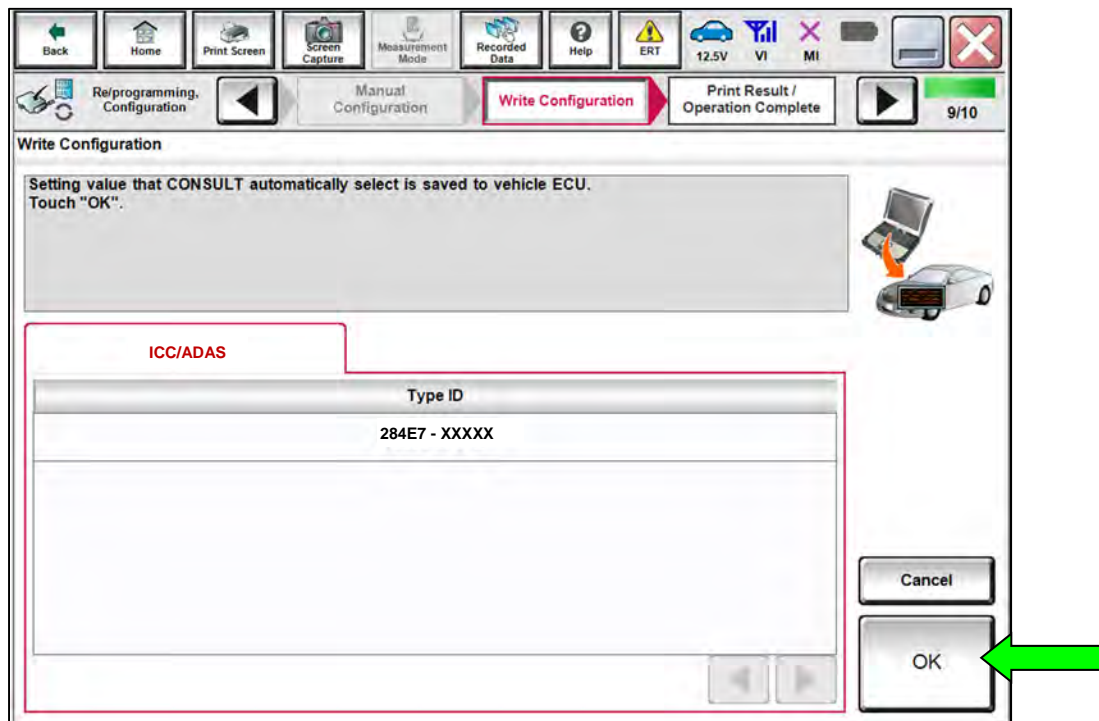


Figure 31

53. Select **End**.

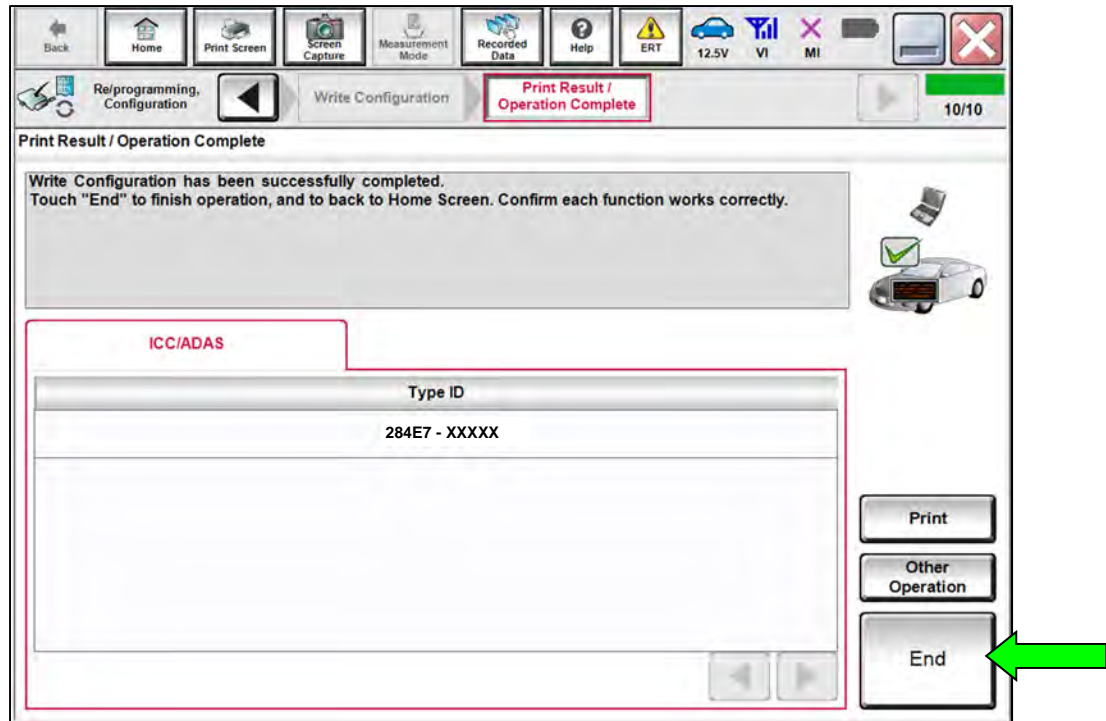


Figure 32

54. Select **Home** (screen not shown).

Erase DTCs

55. Select **Diagnosis (All Systems)**.

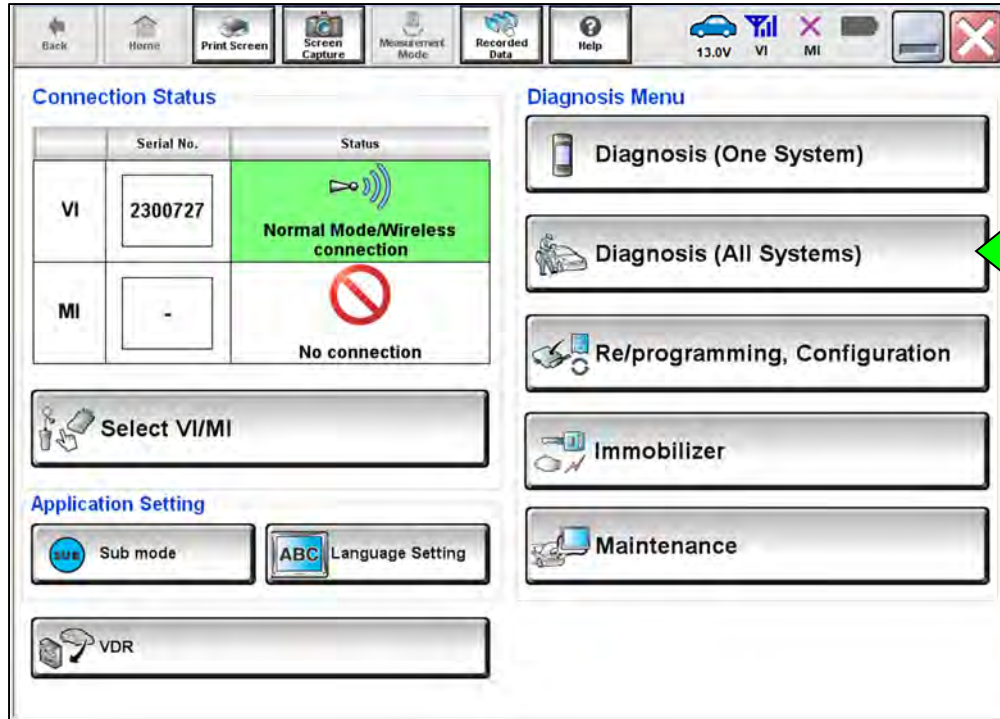


Figure 33

56. Select **ERASE**.

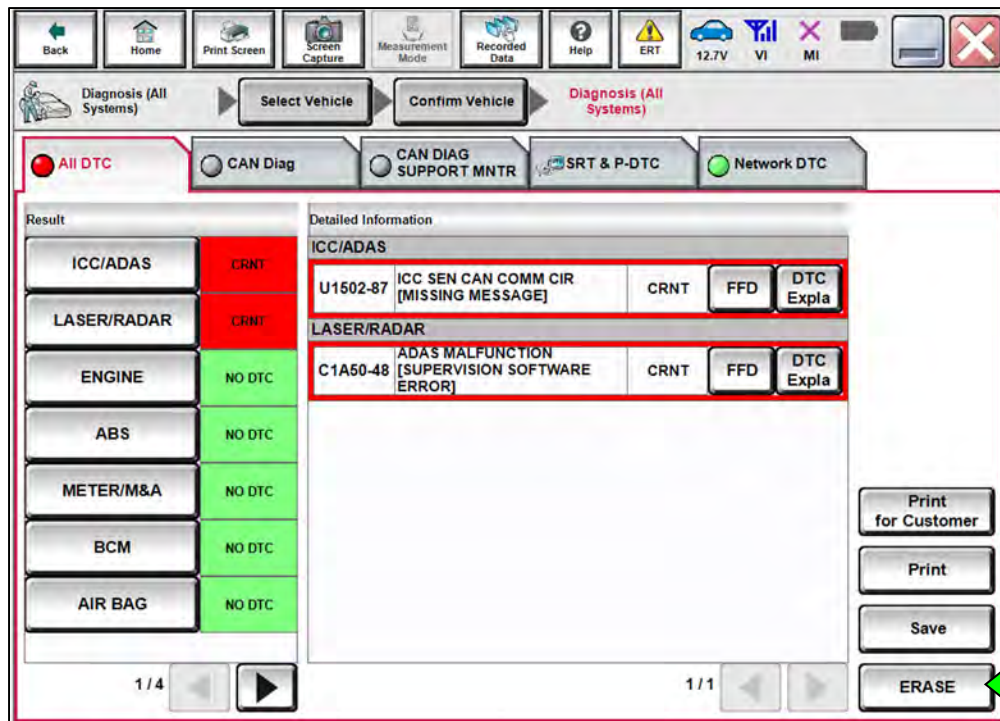


Figure 34

57. Select **Home** (screen not shown).
58. Start the vehicle and allow it to run for approximately 1 minute, and then turn the ignition OFF.
59. Turn the ignition ON with the engine OFF.
60. Select **Diagnosis (One System)**.

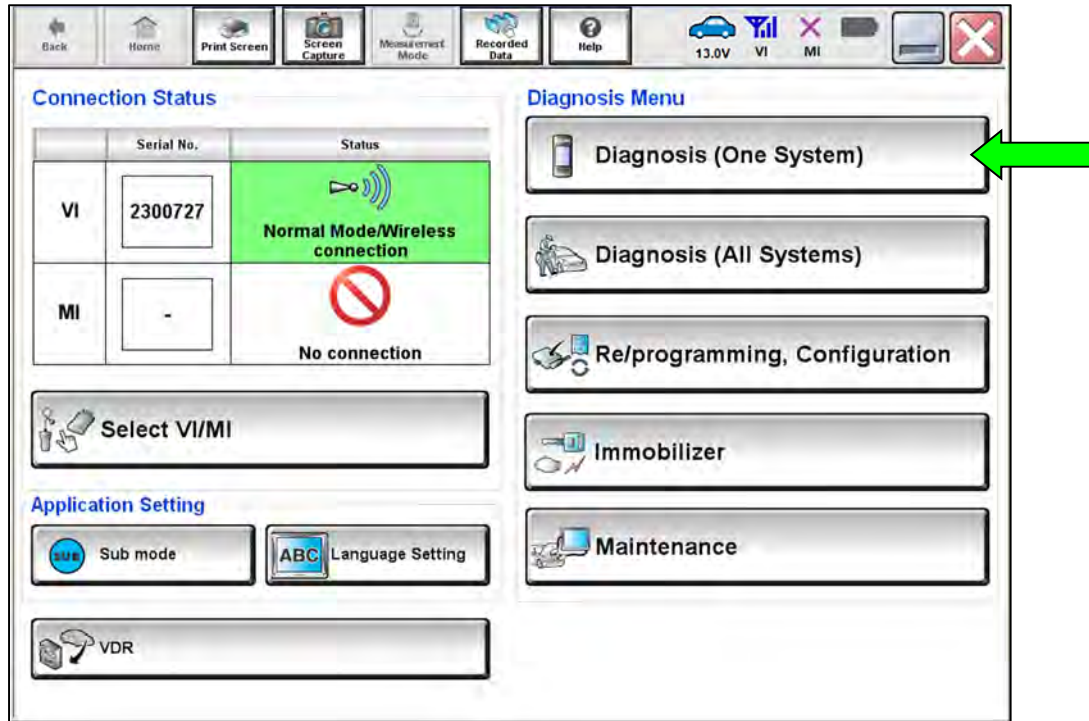


Figure 35

61. Select **ICC/ADAS**.

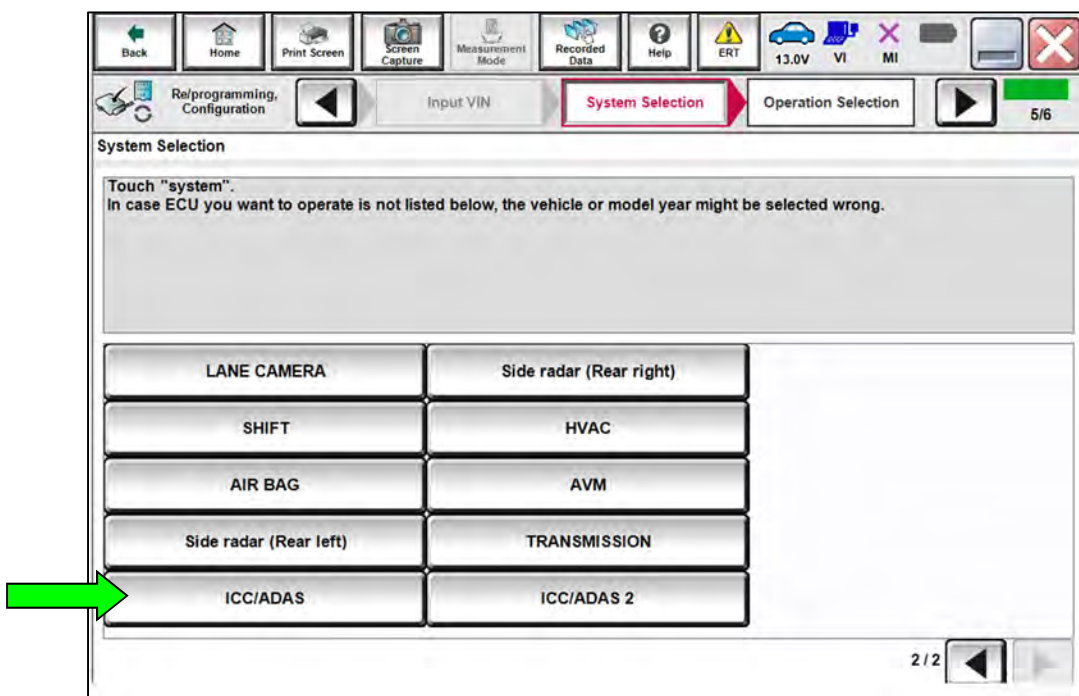


Figure 36

62. Select **ERASE**.

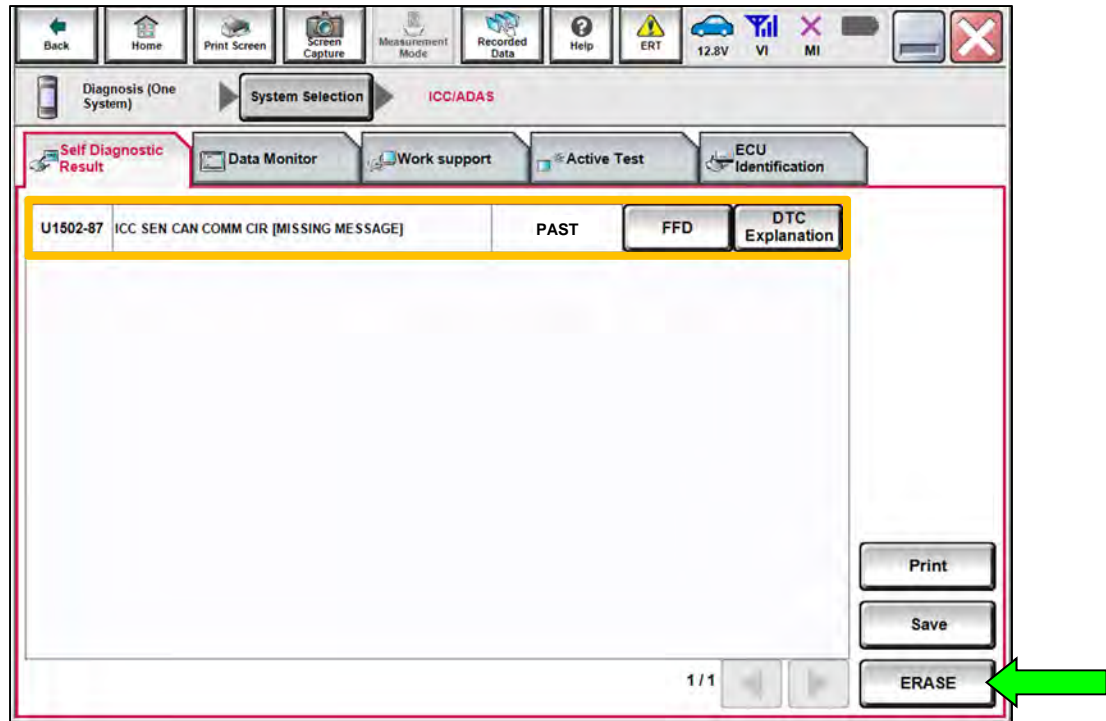


Figure 37

63. Select **Home**, close C-III plus and disconnect the VI.

64. Disconnect the battery maintainer or smart charger from the vehicle.

CLAIMS INFORMATION

Submit a Primary Part (PP) type line claim using the following claims coding:

DESCRIPTION	PFP	OP CODE	SYM	DIA	FRT
Reprogram ICC/ADAS Unit	(1)	RXD5AA	ZE	32	0.8

- (1) Refer to the electronic parts catalog and use the ADAS Controller Assy (284E7-*****) part number as the Primary Failed Part (PFP).

HINT: FRT allows adequate time to access DTC codes. No other diagnostic procedures subsequently required. Do NOT claim any Diagnostic Op Codes with this claim.

AMENDMENT HISTORY

PUBLISHED DATE	REFERENCE	DESCRIPTION
May 22, 2023	NTB23-044	Original bulletin published
May 10, 2024	NTB23-044A	APPLIED VEHICLES revised, APPLIED DATES added, and battery voltage range updated on pages 2, 12, and 15