



# TECHNICAL SERVICE BULLETIN

Classification: DA22-008C	Reference: NTB23-011C	Date: May 15, 2024
------------------------------	--------------------------	-----------------------

## "FORWARD DRIVING AIDS TEMPORARILY DISABLED FRONT SENSOR BLOCKED" WARNING CONTINUOUSLY SHOWN ON INSTRUMENT PANEL AFTER SNOWY/ICY DRIVE WEATHER CONDITIONS, WITH DTC C2582-97 STORED IN LASER/RADAR CONTROL UNIT

This bulletin has been amended. See AMENDMENT HISTORY on the last page.  
Please discard previous versions of this bulletin.

**APPLIED VEHICLES:** 2021-2023 Rogue (T33)

### IF YOU CONFIRM

The warning message "Forward Driving Aids Temporarily Disabled Front Sensor Blocked" is displayed on the Instrument Panel AFTER snowy/icy drive weather conditions, with DTC C2582-97 for "Distance Sensor" stored in the LASER/RADAR control unit,

### AND

Salt residue or snow/ice is present between the inside surface of the Front Bumper Fascia and front surface of the Distance Sensor.

**HINT:** Refer to **Flow Chart** on page 3.

- This bulletin APPLIES only if the customer experiences the "Forward Driving Aids Temporarily Disabled Front Sensor Blocked" warning AFTER snowy/icy drive weather conditions.
- This bulletin DOES NOT apply if any other type of contamination (e.g., dirt, debris, or rain) is on the Distance Sensor surface.
  - Do not apply the Service Kit in PARTS INFORMATION for these types of contamination. This service kit does not prevent snow from adhering to the emblem surface, nor does it improve the conditions for detecting other blockages.
    - For other blockages, refer to NTB19-033 and the ESM for further diagnostic information.
    - See the owner's manual for more information on detecting blockages; as shown in Figure 1 on page 2.

See **ACTION** on page 2.

Bulletins are intended for use by qualified technicians, not 'do-it-yourselfers'. Qualified technicians are properly trained individuals who have the equipment, tools, safety instruction, and know-how to do a job properly and safely. **NOTE:** If you believe that a described condition may apply to a particular vehicle, DO NOT assume that it does. See your Nissan dealer to determine if this applies to your vehicle.


"Forward Driving Aids temporarily disabled Front Sensor blocked See Owner's Manual" and  Flashing	Front radar obstruction	Inclement weather (rain, fog, snow, etc.)	ICC, AEB with Pedestrian Detection and I-FCW	When the condition no longer exists, the system resumes automatically. (Push the ProPILOT Assist switch to turn back on the ICC system.)
		Sensor covered with dirt or obstructed		Clean the front radar sensor area on the front of the vehicle.
		Roads with limited road structures or buildings		When the condition no longer exists, the system resumes automatically. (Push the ProPILOT Assist switch to turn back on the ICC system.)

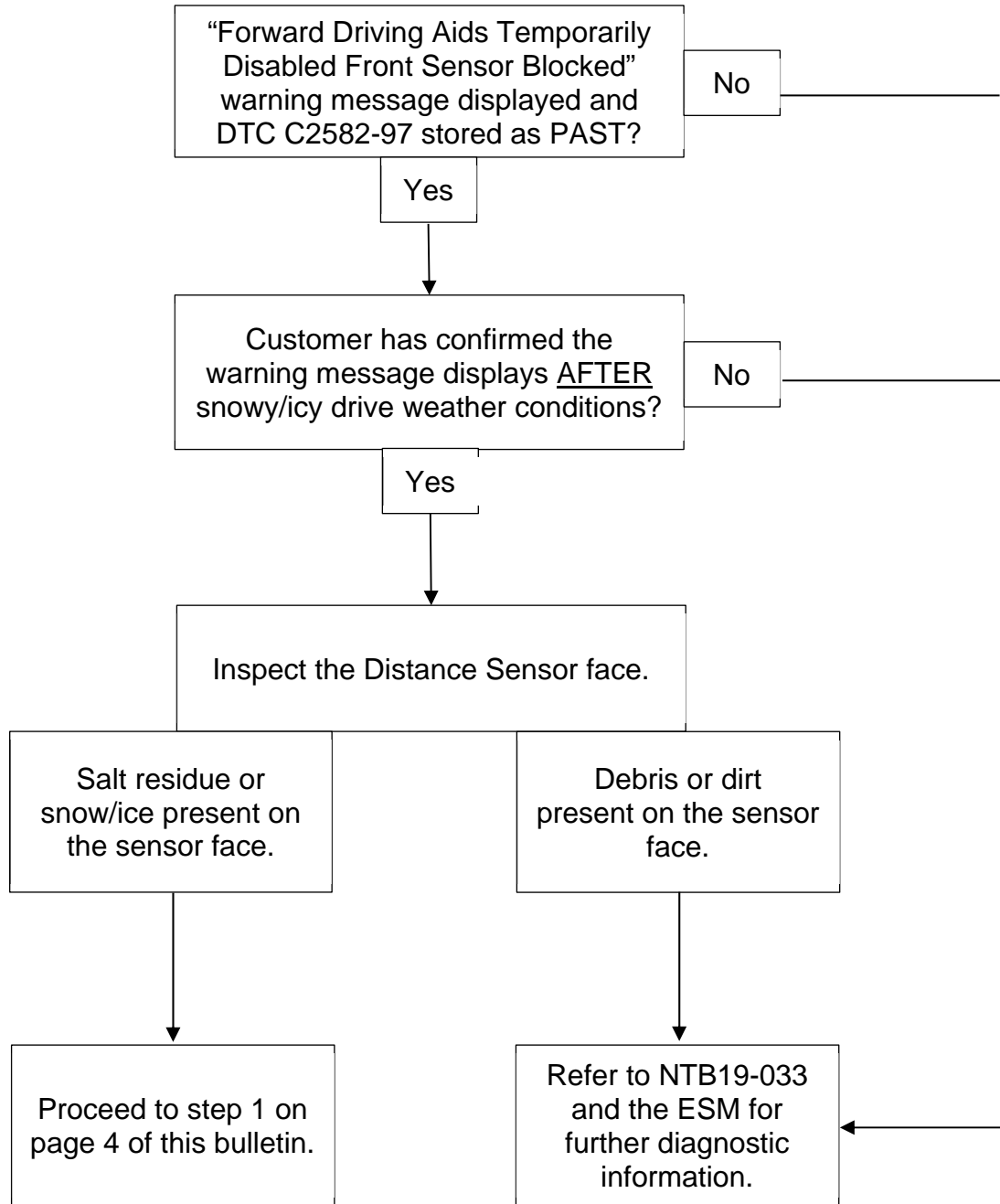
Figure 1

## ACTION

Install the Distance Sensor Bracket & Grill Tape Service Kit following the **SERVICE PROCEDURE** starting on page 4.

**IMPORTANT:** The purpose of **ACTION** (above) is to give you a quick idea of the work you will be performing. You **MUST** closely follow the entire **SERVICE PROCEDURE** as it contains information that is essential to successfully completing this repair.

# Flow Chart



## SERVICE PROCEDURE

1. Remove the Front Grille.
  - Refer to the ESM: **BODY EXTERIOR, DOORS, ROOF & VEHICLE SECURITY > EXTERIOR > REMOVAL AND INSTALLATION > FRONT GRILLE > Removal and Installation**
2. Wipe off salt residue/snow/ice from the surfaces of the Distance Sensor and the back side of the Nissan emblem.
3. Snap the Distance Sensor Bracket (Figure 2) onto the Distance Sensor.
  - See **PARTS INFORMATION**.

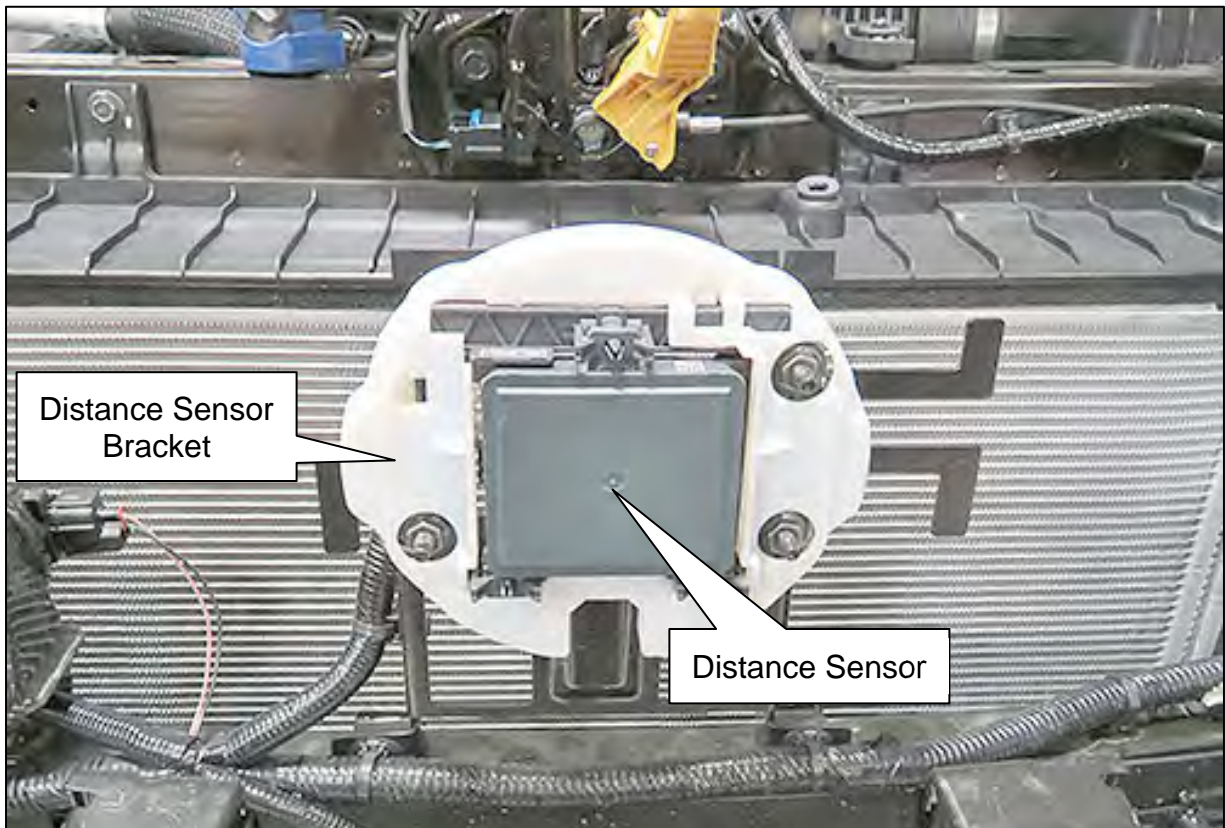


Figure 2

Refer to steps 4-7 to attach two (2) Foam Seals (Figure 3) to the inside of the Nissan emblem, on the Grille, to close the Grille spaces (Figure 4).

**HINT:** The Foam Seals are left and right, and are shown in Figure 3 on the sides and in orientation that they will be installed.

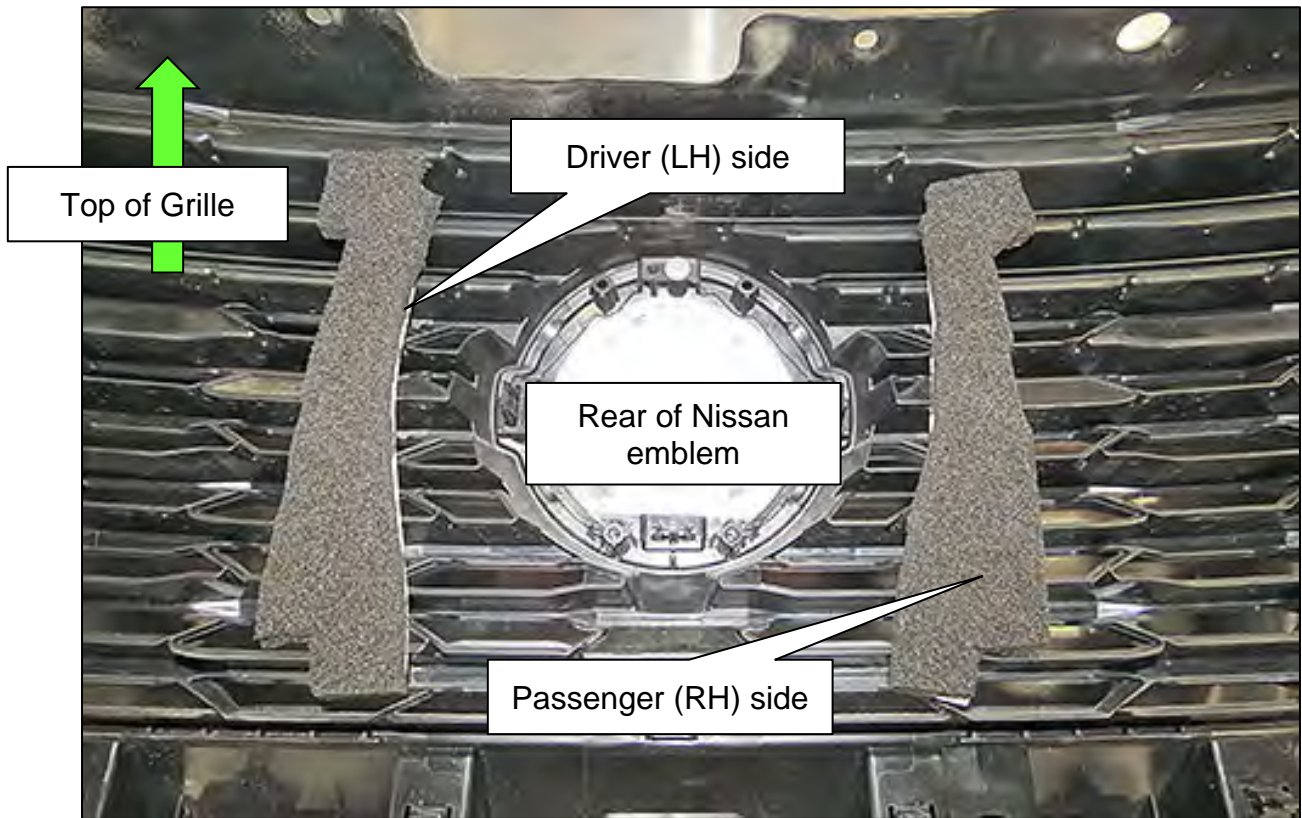


Figure 3

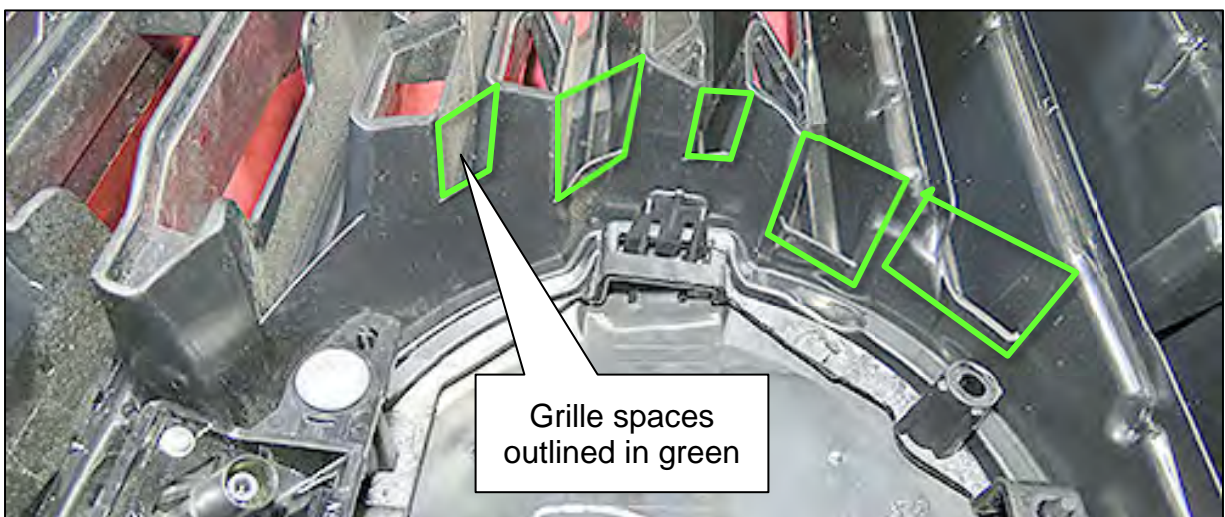


Figure 4

**HINT:** The left side is shown in the following Figures. The right side is similar.

4. Remove the self-adhesive backing from the left side Foam Seal.
  - Install the Foam Seals one at a time.

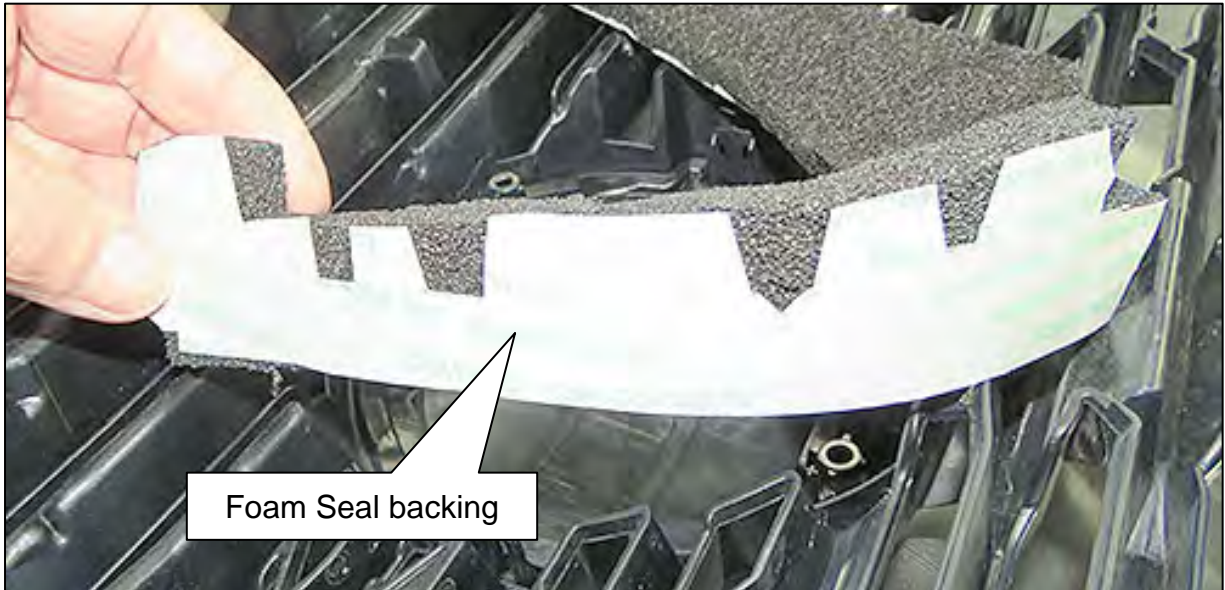


Figure 5

5. Start attaching the Foam Seal at the top of the Nissan emblem.

**IMPORTANT:** The top of both the left and right Foam Seals must be touching each other when installed.



Figure 6

6. Continue attaching the foam as shown in Figure 7 and Figure 8 on page 7.

**HINT:** Use the self-adhesive cut-outs to help align the Foam Seal.

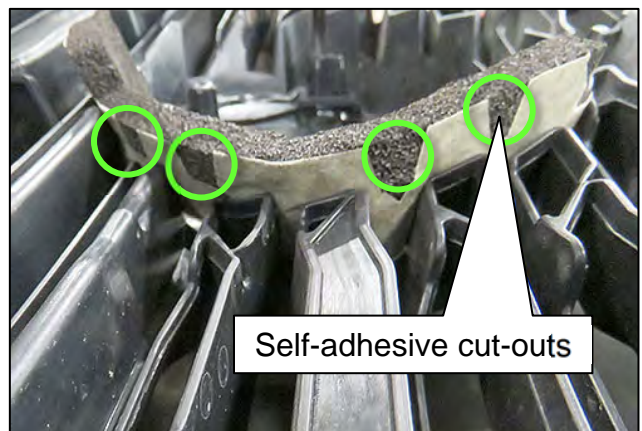


Figure 7

- Foam Seal notch should be level with the end of the last grille space.

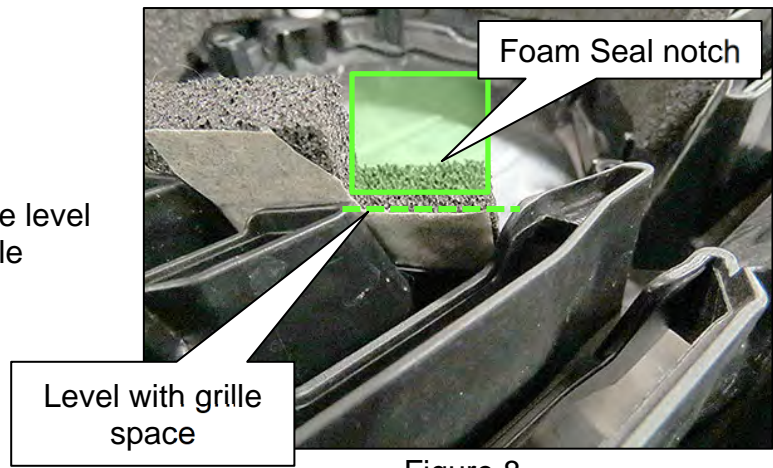


Figure 8

7. Refer to steps 4-6 on page 6 to install the right side Foam Seal.
  - Both Foam Seals must seal against each other at the top.**HINT:** Figure 9 shows both Foam Seals installed.

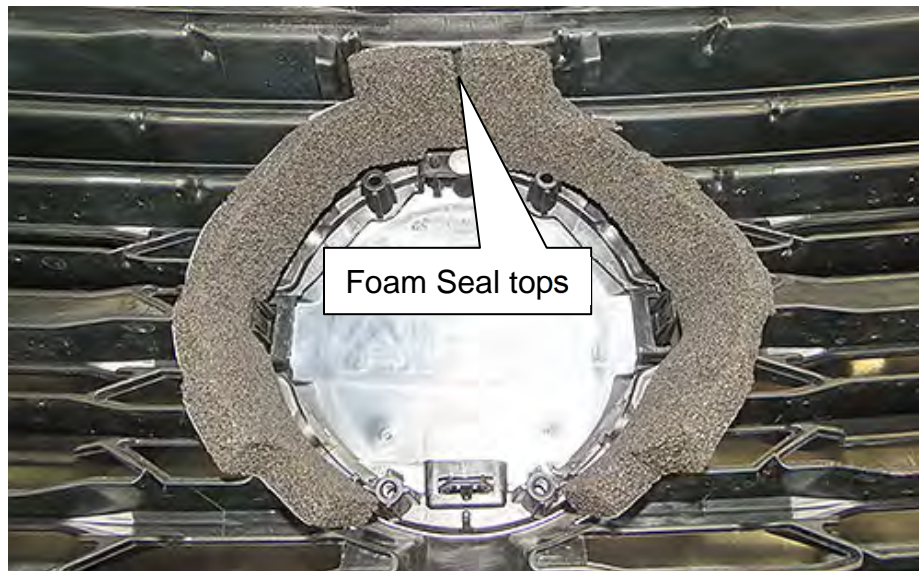


Figure 9

8. Fold the tops of the two Foam Seals over together, as shown in Figure 10.



Figure 10

9. Reinstall the Front Grille.

- Refer to the ESM: **BODY EXTERIOR, DOORS, ROOF & VEHICLE SECURITY > EXTERIOR > REMOVAL AND INSTALLATION > FRONT GRILLE > Removal and Installation**

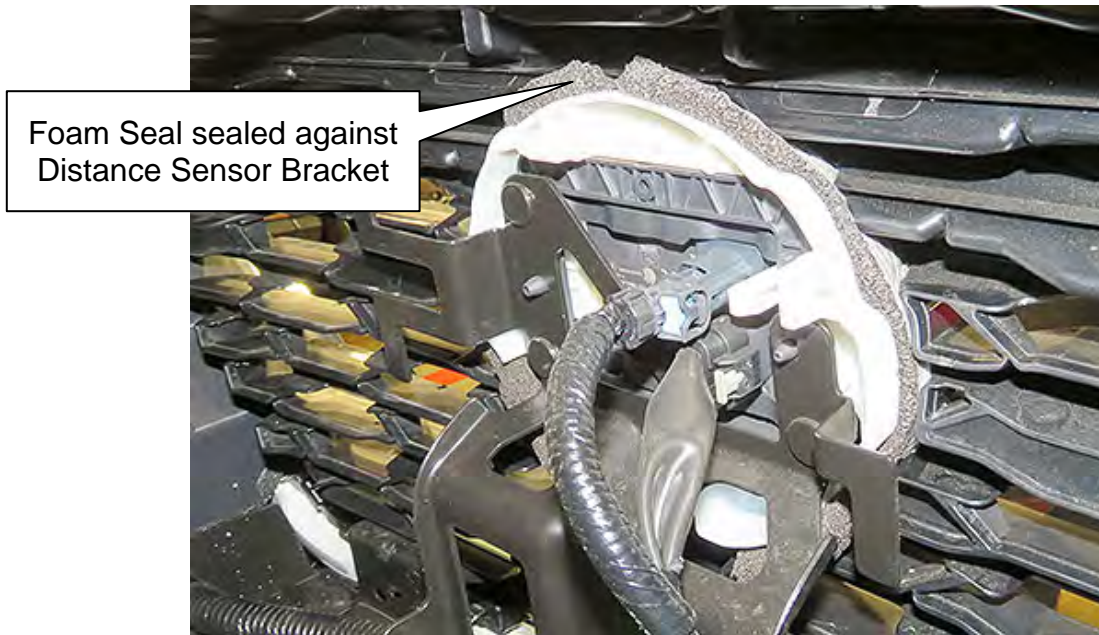


Figure 11

10. With C-III plus, perform **Erase All DTCs**.

11. Confirm that DTC C2582-97 no longer stores in the LASER/RADAR control unit.

- If DTC C2582-97 continues to store in the LASER/RADAR control unit, refer to the ESM for diagnostic information not supported by this bulletin.

## PARTS INFORMATION

DESCRIPTION	PART NUMBER	QUANTITY
BRKT-FR RADAR, MAIN (Distance Sensor Bracket)	285U2-6RF0A	1
BRKT-FR RADAR, TAPE, RH (Foam Seal)	285U2-6RF0C	1
BRKT-FR RADAR, TAPE, LH (Foam Seal)	285U2-6RF0D	1

## CLAIMS INFORMATION

Submit a Primary Part (PP) type line claim using the following claims coding:

DESCRIPTION	PFP	OP CODE	SYM	DIA	FRT
Install Bracket and Grille Tape Kit	(1)	BX8CAA	ZE	32	0.4

OR

DESCRIPTION	PFP	OP CODE	SYM	DIA	FRT
Install Bracket and Grille Tape Kit With AVM	(1)	BX8DAA	ZE	32	0.8

- (1) Reference the electronic parts catalog and use the Distance Sensor (28437-\*\*\*\*\*) as the Primary Failed Part (PFP).

## AMENDMENT HISTORY

PUBLISHED DATE	REFERENCE	DESCRIPTION
January 26, 2023	NTB23-011	Original bulletin published
April 19, 2023	NTB23-011A	Republished to include NNA
June 22, 2023	NTB23-011B	Title and pages 1-3 revised
May 15, 2024	NTB23-011C	Amended to make changes to <b>TITLE, IF YOU CONFIRM</b> and <b>FLOW CHART</b>