


Title:	Extreme Temperature Insulation Upgrade Package			
Number:	683	Release Date:	06/11/2024	
Revision Number:	Not Applicable	Revision Date:	Not Applicable	
Chassis Type:	Enforcer, Velocity			
Component Description:	Aearo Tech Insulation Kit Installation			
Parts:	See Table Below			

Subject:

Cab insulation upgrades are available as a product enhancement to provide additional support for the HVAC system during periods of excessive heat.

Description:

IMPORTANT: There are multiple variations of each cab type (i.e. more than one type of Enforcer Cab). If you are unsure of your specific cab type, please open a technical support incident on Pierceparts.com to ensure that the correct kit is ordered for your vehicle.

NOTE: These instructions cover the insulation installation procedure on an Enforcer cab. Other cab variants may differ from this procedure, but this will serve as a guideline for the general process.

Part Kits:

Cab	Part Number
Enforcer 7010	4473499
Enforcer 7010 PUC	4473507
Enforcer 7000	4490367
Enforcer 6010	4490370
Velocity 6010	4490373
Enforcer 8410 PUC	4519060
Velocity 7010	4521598
Enforcer 6000	4545661
Enforcer 7010 Notch	4545673

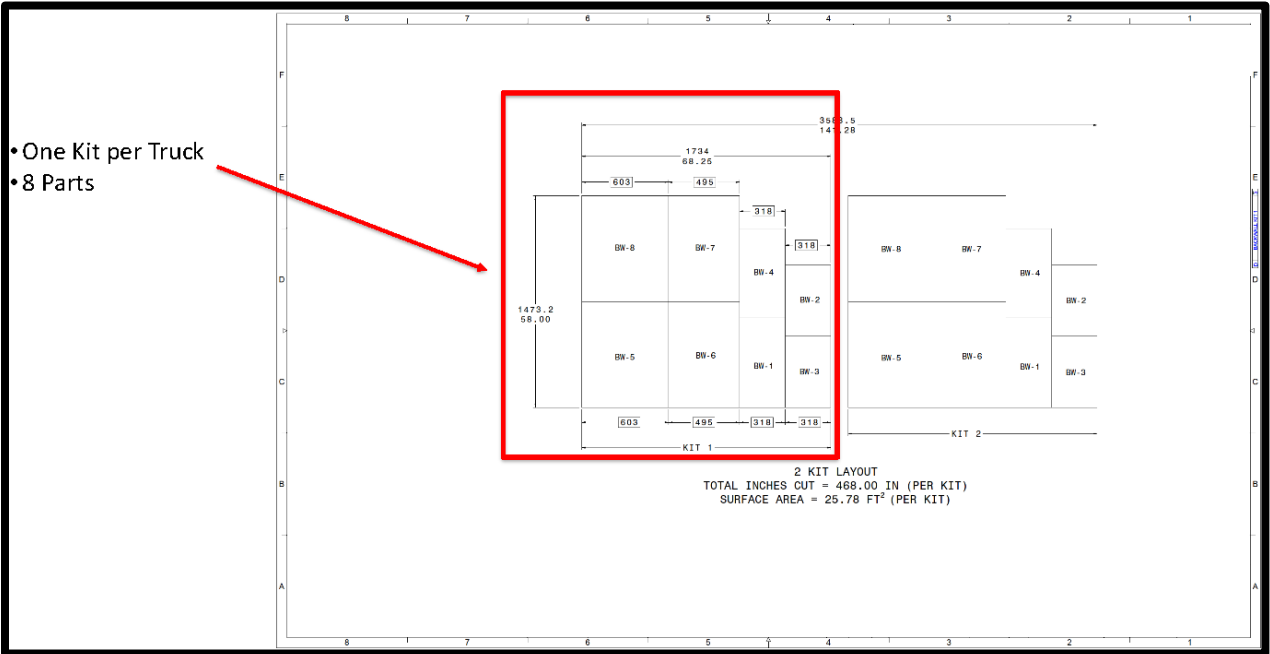
Enforcer Engine Tunnels	Part Number
MX13	4473473
DD13	4474560
ISL (L9)	4473487
X15	4473492
T3	4516537

Velocity Engine Tunnels	Part Number
X12-X15 (ISX)	4516530
L9-DD13	4513527

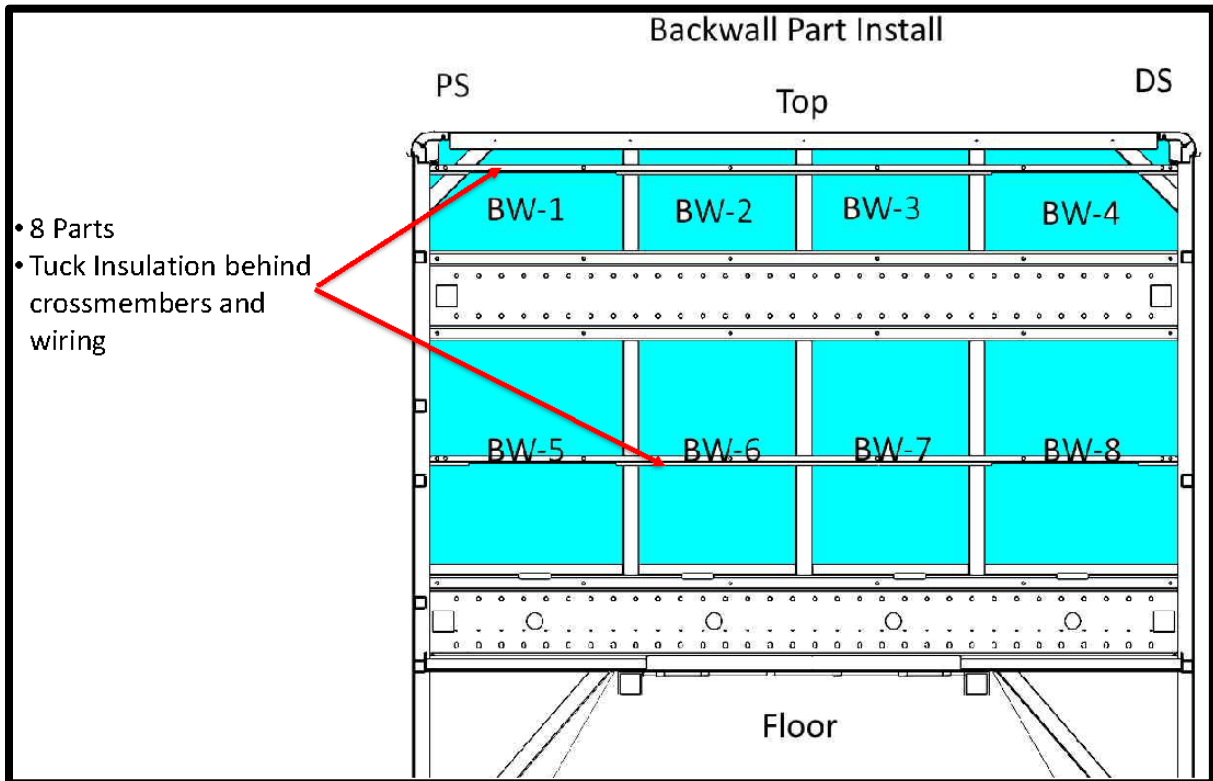
Enforcer Door Kit	Part Number
Enforcer Doors	4545696

Velocity Door Kit	Part Number
Velocity Doors	4545729

Interior Insulation:



Backwall Parts (First Layer)

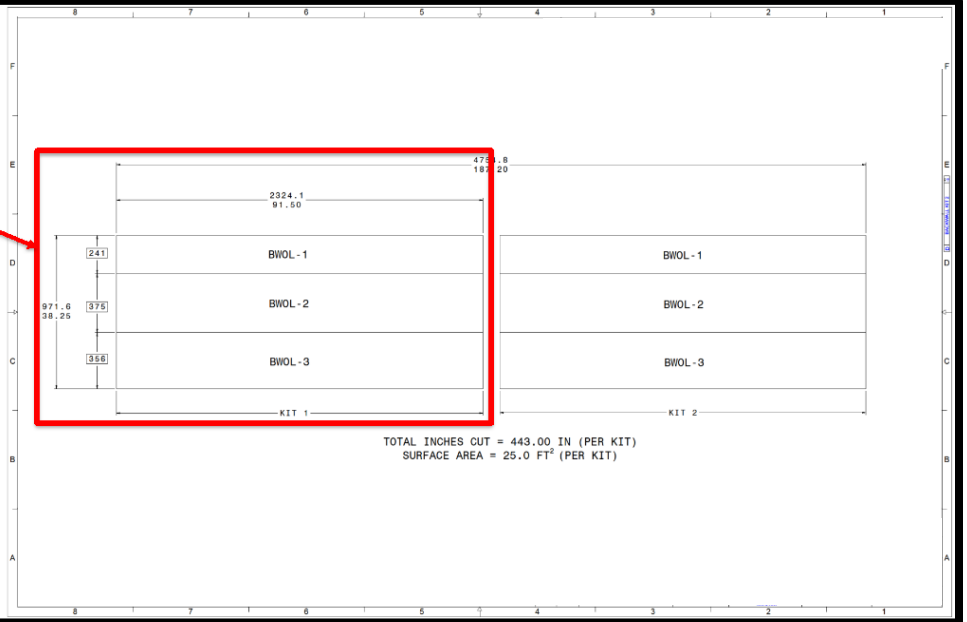


Backwall Parts (First Layer)

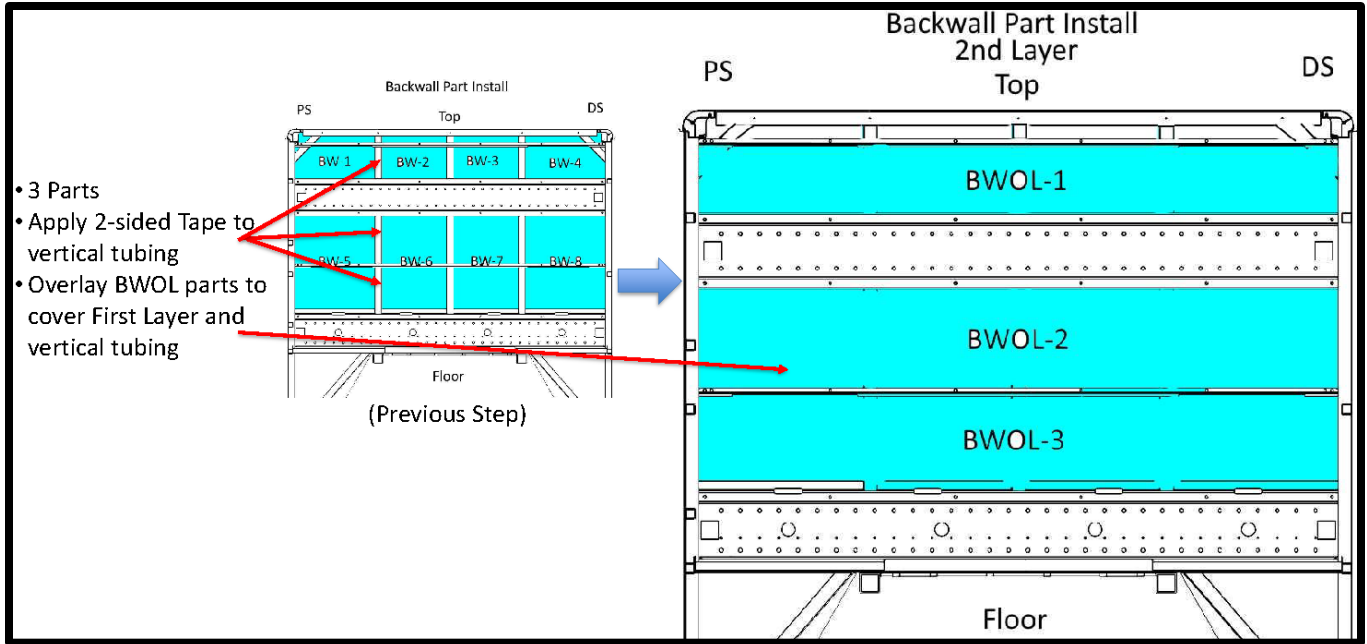


Backwall Layer 1

- One Kit per Truck
- 3 Parts



Backwall Parts (Second Layer)



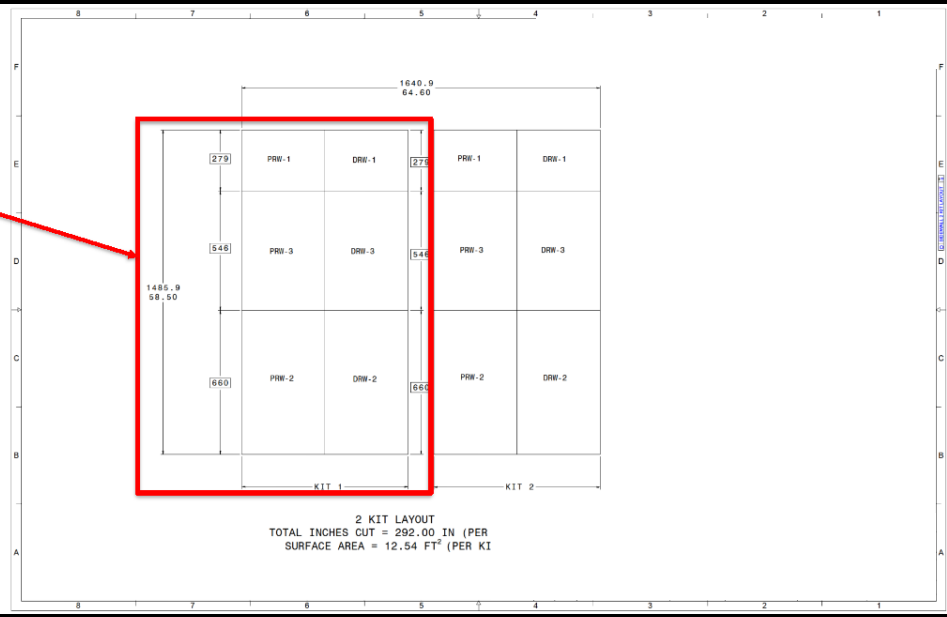
Backwall Parts (Second Layer)



Backwall Layer 2

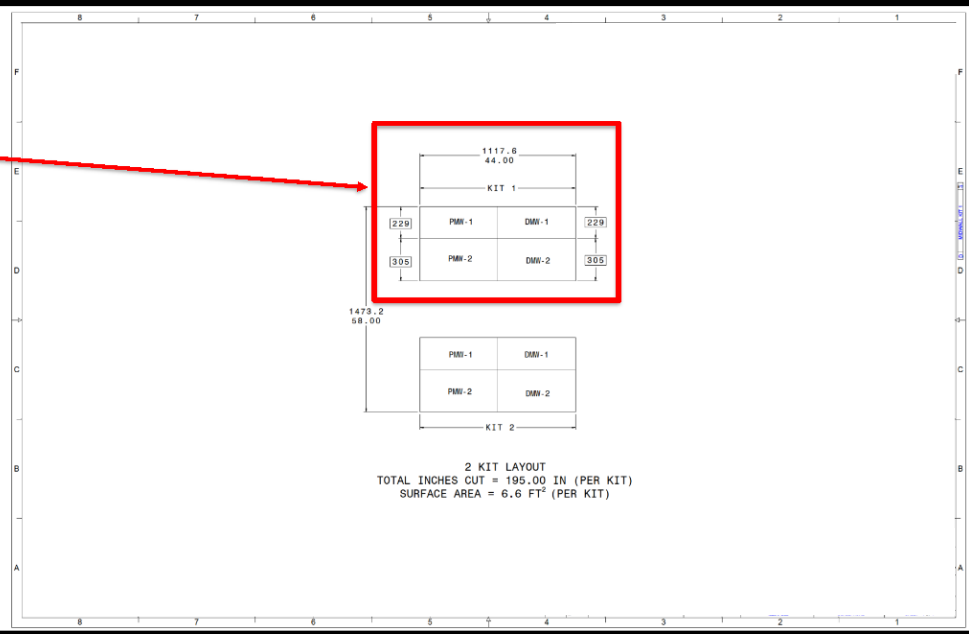
PARTS BULLETIN #683

- One Kit per Truck
- 3 Parts per side
- 6 parts per truck



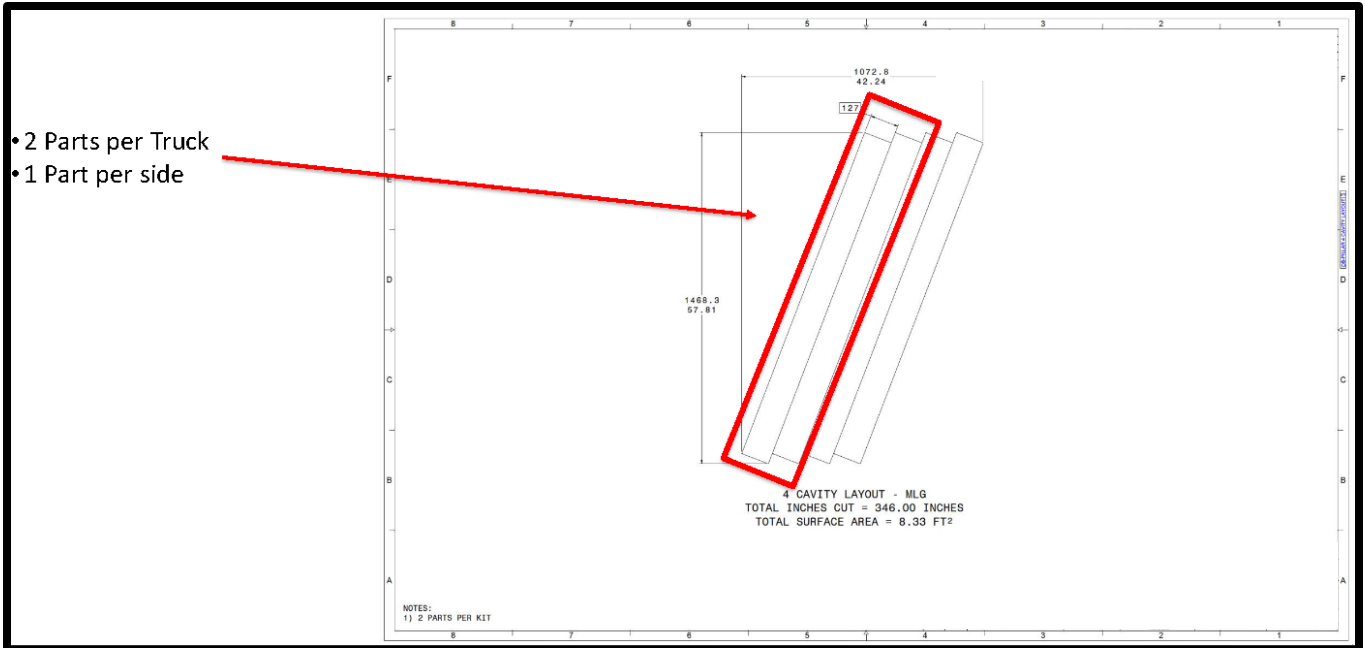
Rear Sidewall Parts

- One Kit per Truck
- 2 Parts per side
- 4 parts per truck

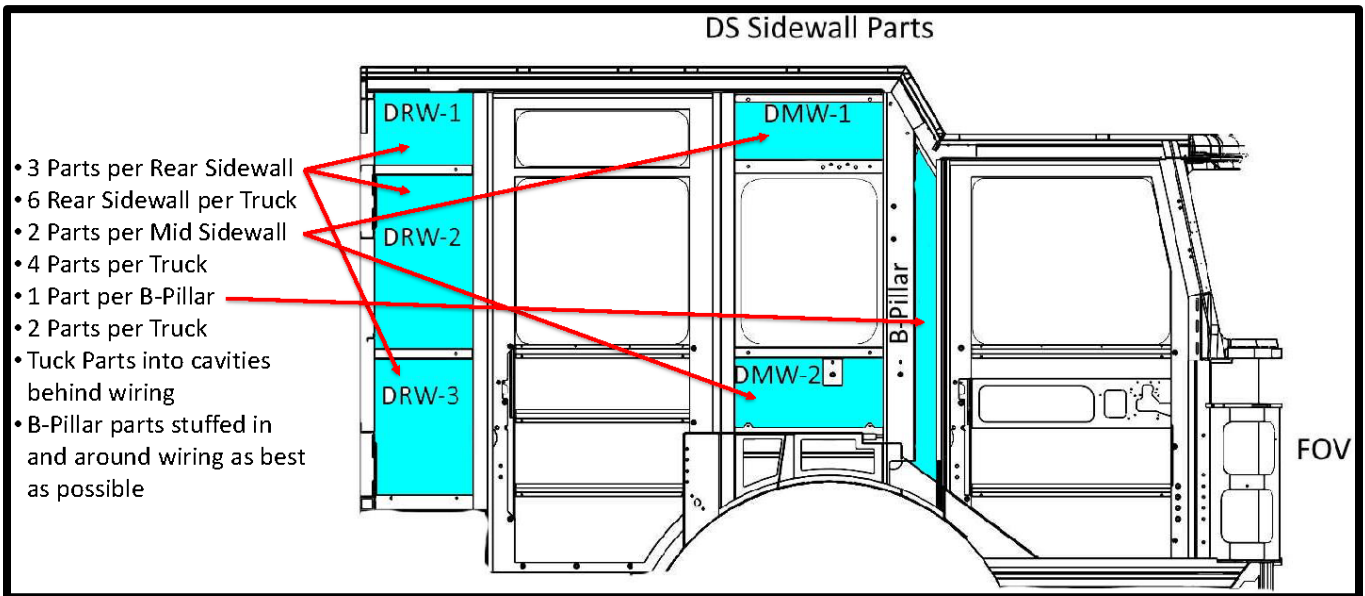


Mid Sidewall Parts

PARTS BULLETIN #683



B-Pillar Parts



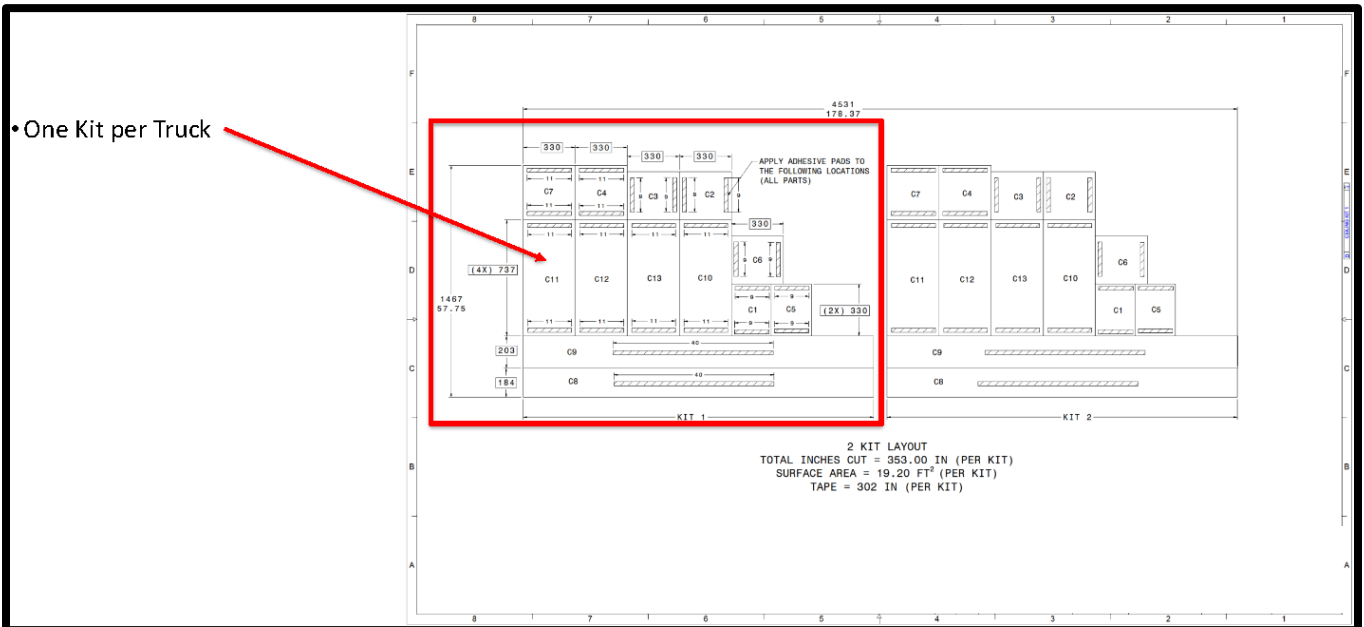
Sidewall Parts



Rear Sidewall, Mid Sidewall, and B-Pillar



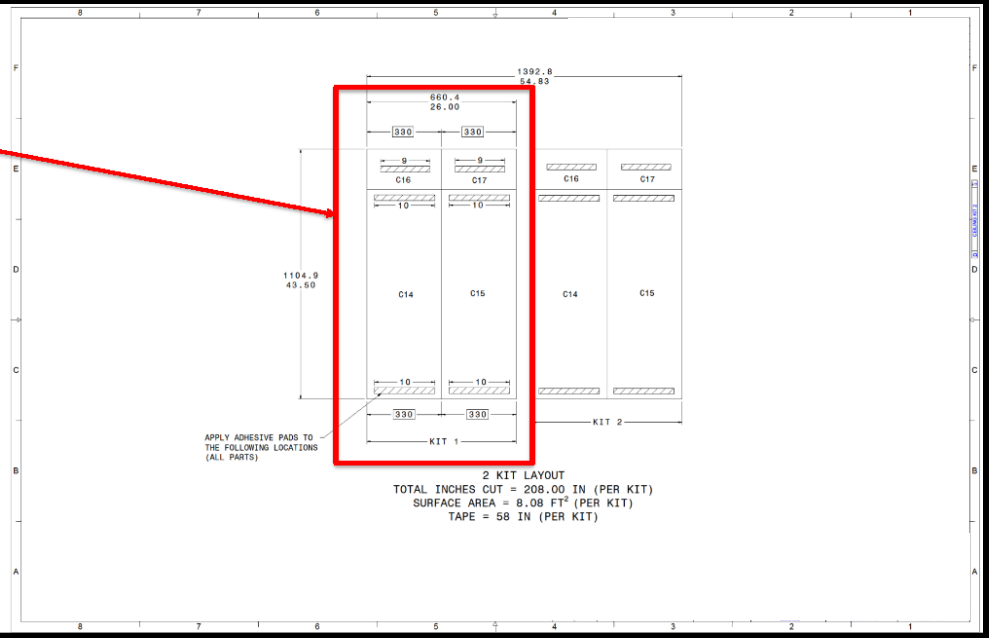
Rear Sidewall, Mid Sidewall, and B-Pillar



Ceiling Parts

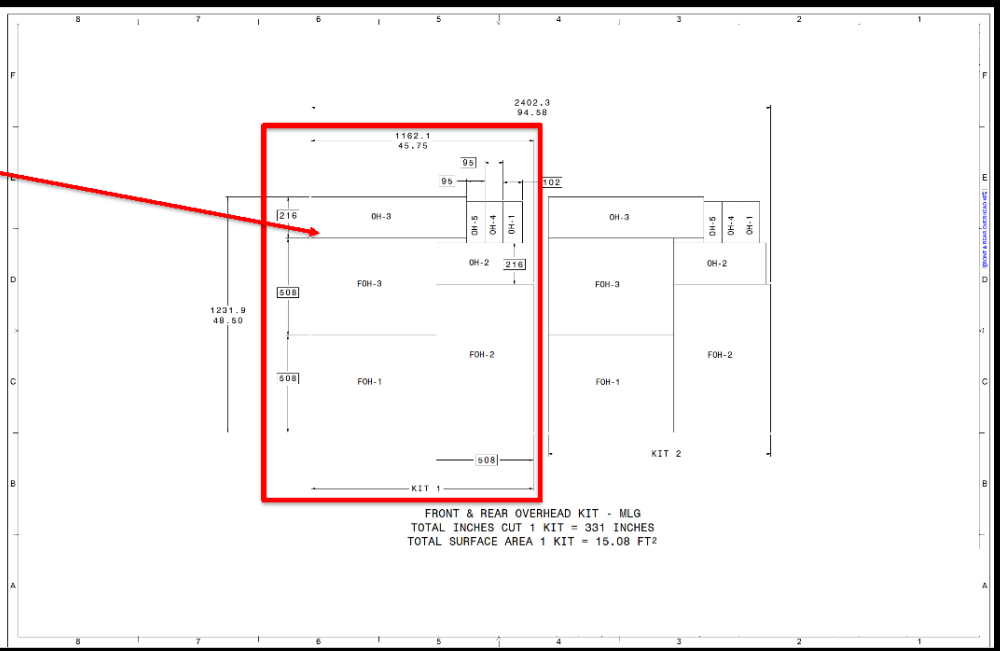
PARTS BULLETIN #683

• One Kit per Truck



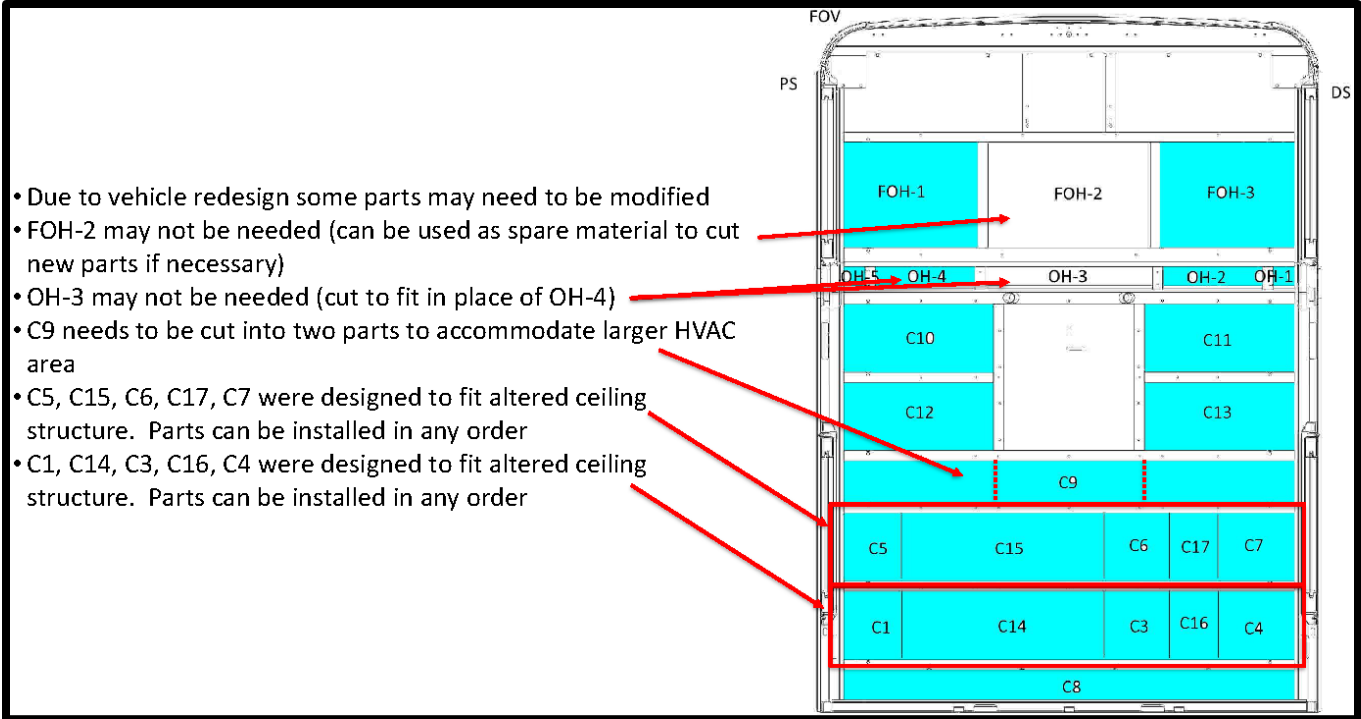
Ceiling Parts

• One Kit per Truck



Overhead and Slant Ceiling Parts

PARTS BULLETIN #683



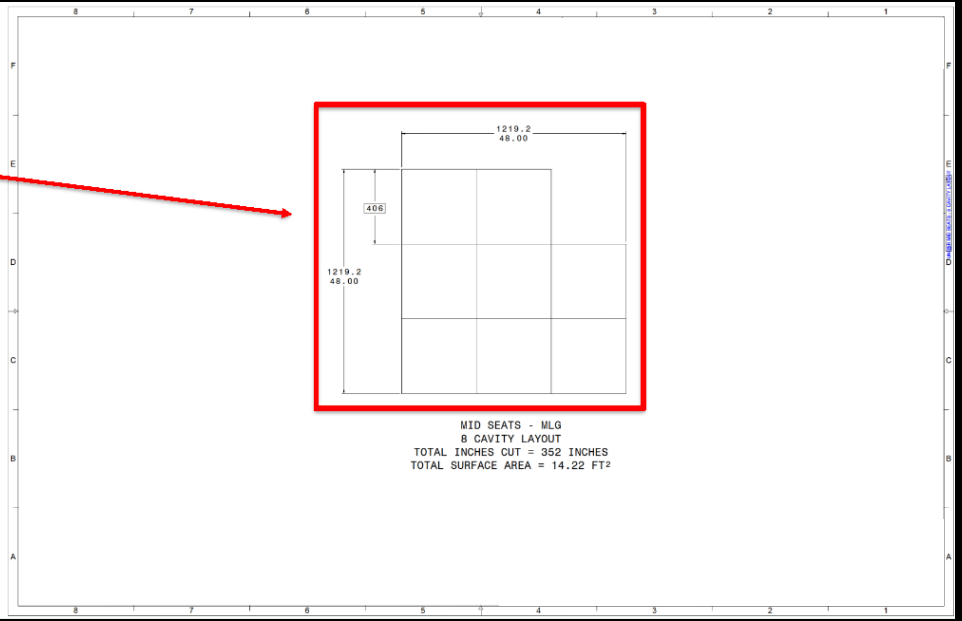
Ceiling Parts



Ceiling

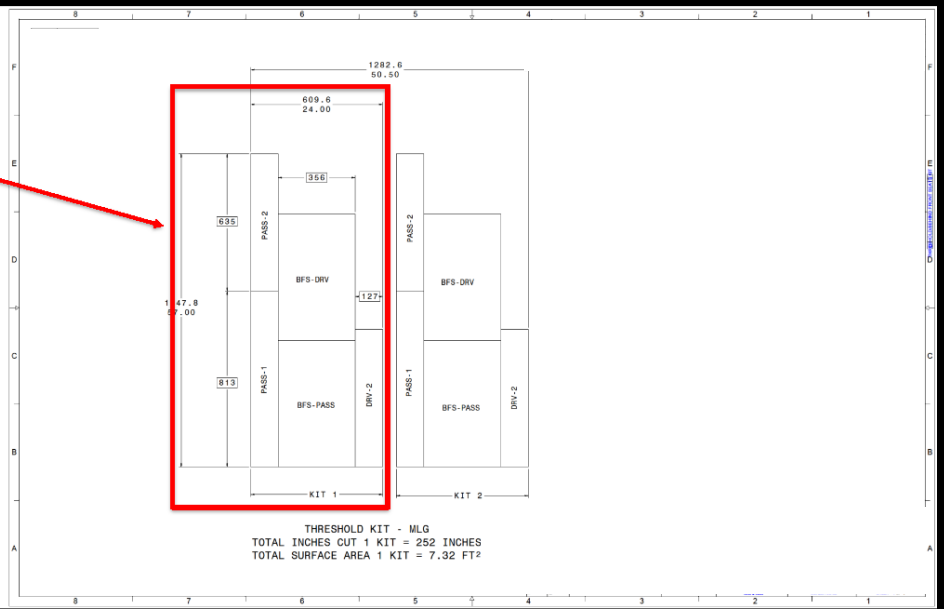
PARTS BULLETIN #683

- One Kit per Truck
- If under seat cavities have components installed, all parts may not be usable



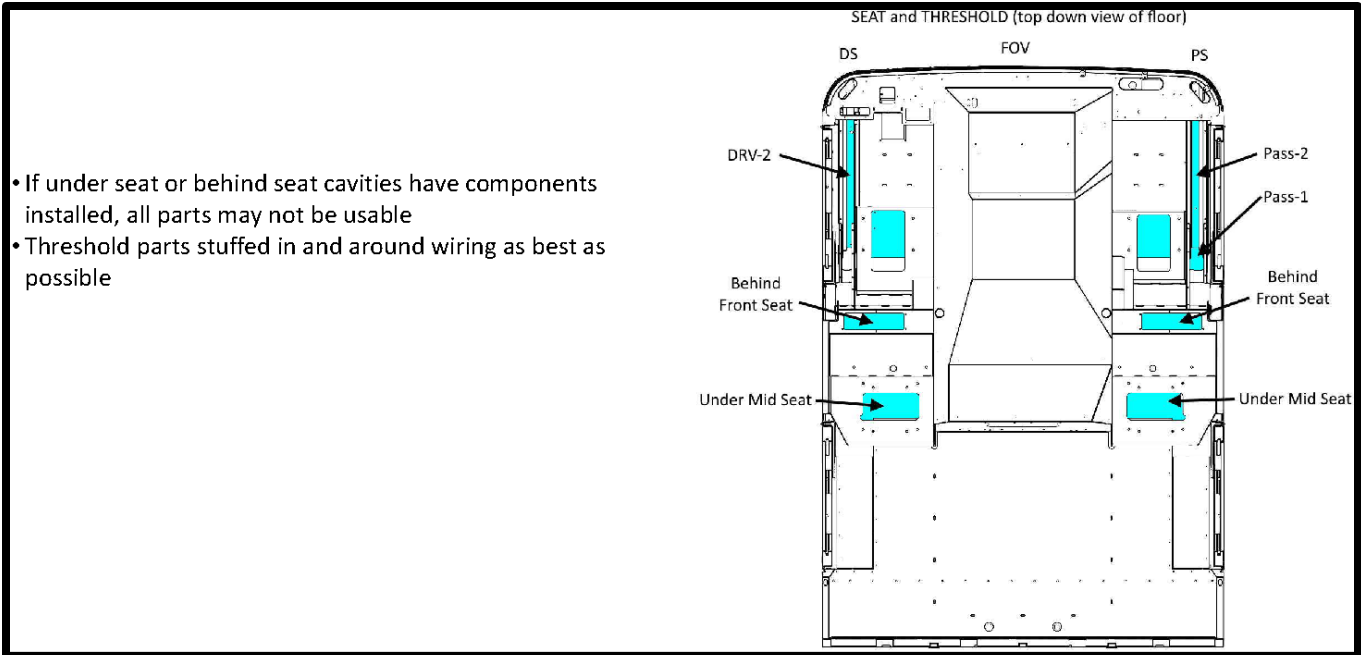
Under Mid Seat Parts

- One Kit per Truck
- If under seat cavities have components installed, all parts may not be usable



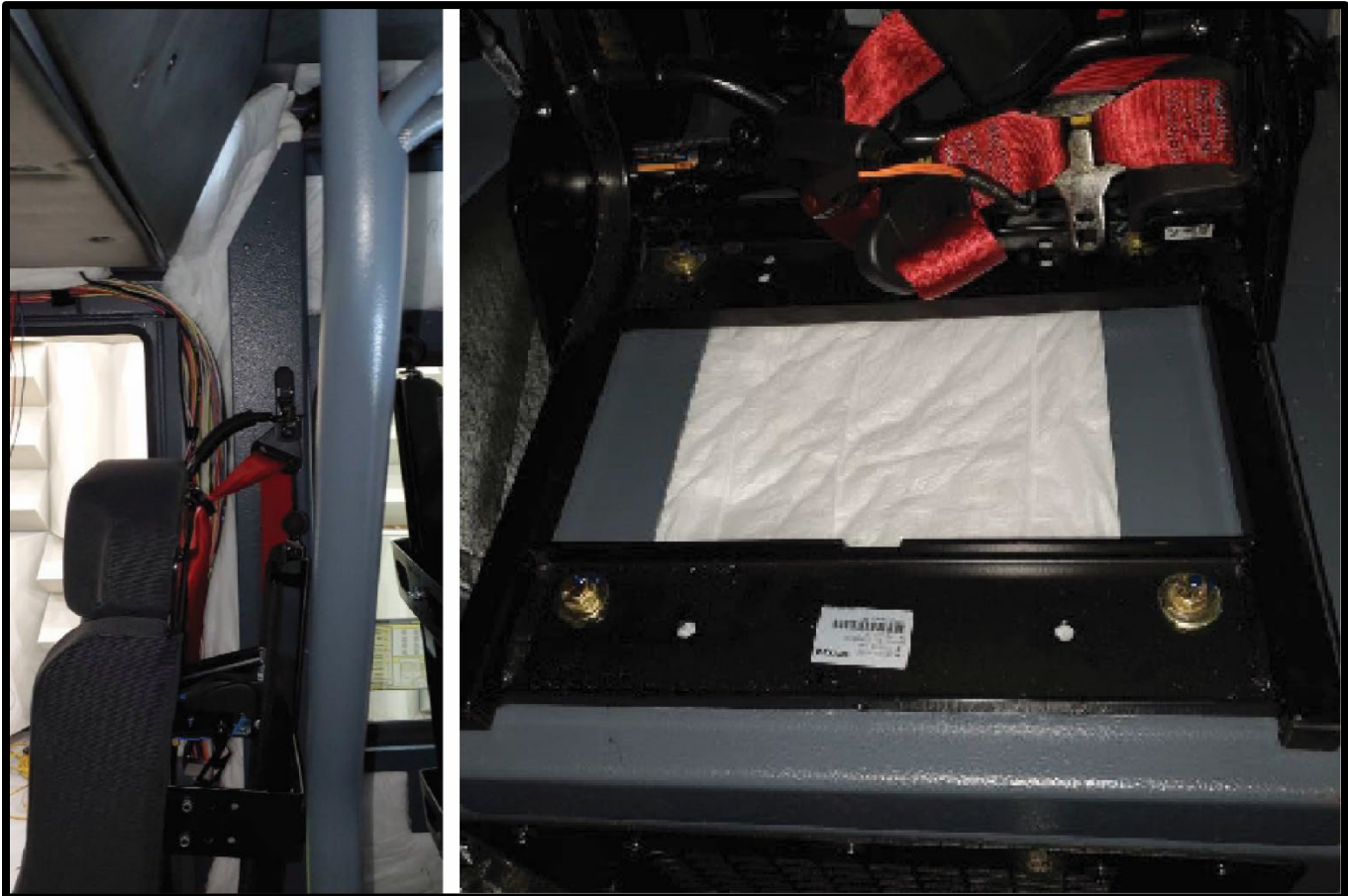
Threshold and Front Seat Parts

PARTS BULLETIN #683



- If under seat or behind seat cavities have components installed, all parts may not be usable
- Threshold parts stuffed in and around wiring as best as possible

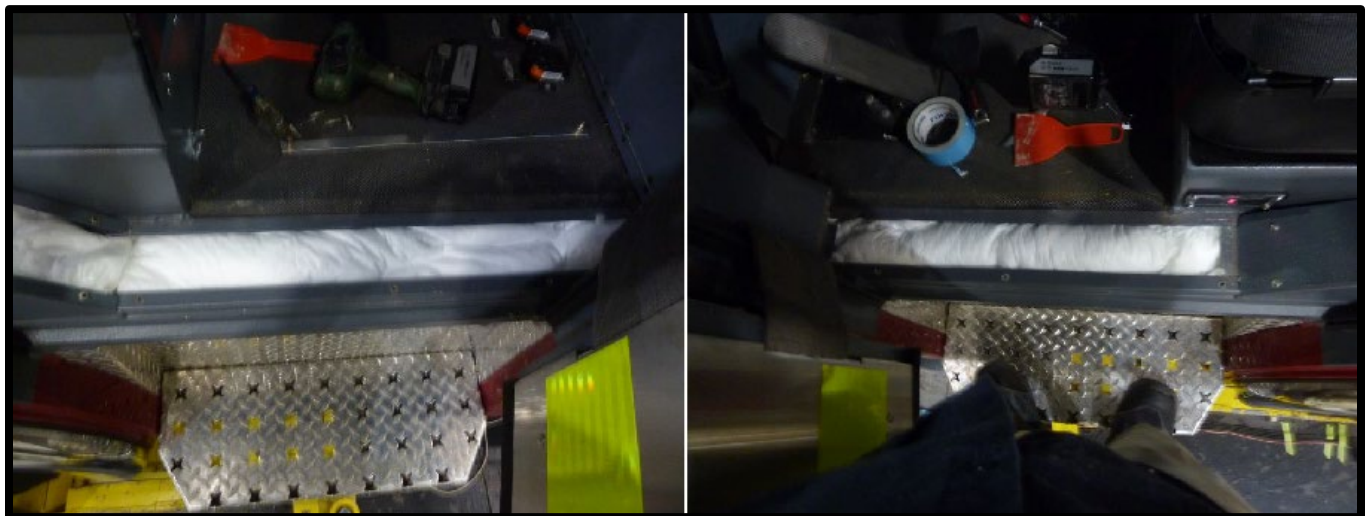
Threshold and Under Seat Parts



Under Seat/Threshold/B-Pillar



Under Seat/Threshold/B-Pillar



Under Seat/Threshold/B-Pillar

PARTS BULLETIN #683

Panel Insulation:

- One Kit per Truck
- Apply to Back Side of Panel
- Parts may need to be trimmed to avoid edges of parts being visible. Easily trimmed with scissors.
- If slight edges are visible once panel is installed into vehicle, a heat gun can be used around edges of installed panel to reduce visibility
- Additional 2-sided tape may be necessary

APPLY ADHESIVE PADS TO THE FOLLOWING LOCATIONS (ALL PARTS)

2348.6
92.60

10

TBW-W

87

1346.8
53.02

LBW-W

87

87

UBW-W

87

236

808

305

TOTAL INCHES CUT = 560 INCHES (PER KIT)
SURFACE AREA = 33.29 FT² (PER KIT)
TAPE = 368 IN (PER KIT)

Backwall Panel Insulation

- One Kit per Truck
- Apply to Back Side of Panel
- Parts may need to be trimmed to avoid edges of parts being visible. Easily trimmed with scissors.
- If slight edges are visible once panel is installed into vehicle, a heat gun can be used around edges of installed panel to reduce visibility
- Additional 2-sided tape may be necessary

APPLY ADHESIVE PADS TO THE FOLLOWING LOCATIONS (ALL PARTS)

1974.9
77.75

52

PSW

441

52

52

DSW

441

52

1336
52.60

70

PSWCT

227

70

DSWCT

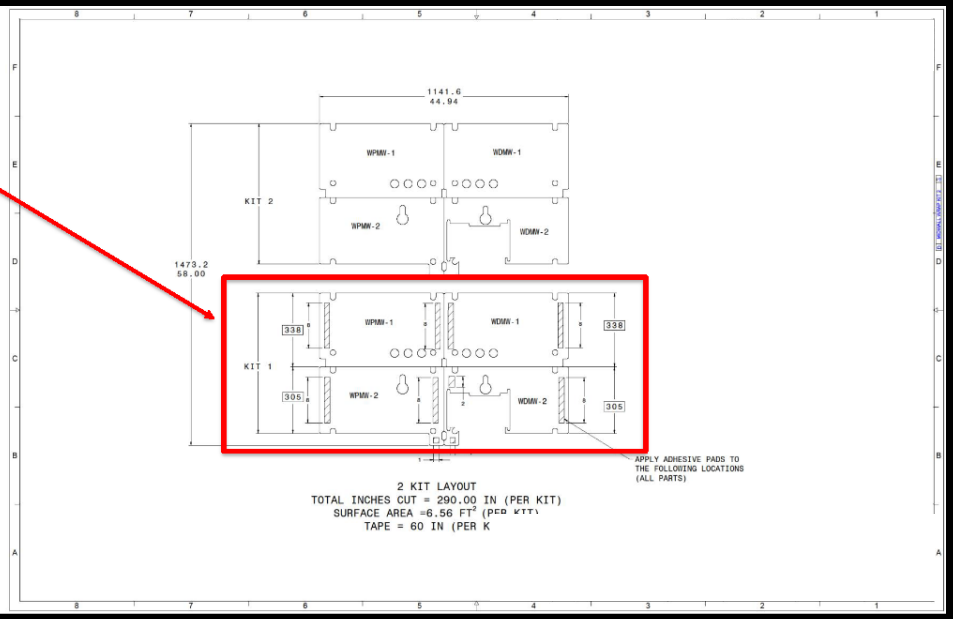
227

1 KIT LAYOUT
TOTAL INCHES CUT = 645 INCHES
SURFACE AREA = 24.73 FT²
TAPE = 348 INCHES

Rear Sidewall and Chamfer Panel Insulation

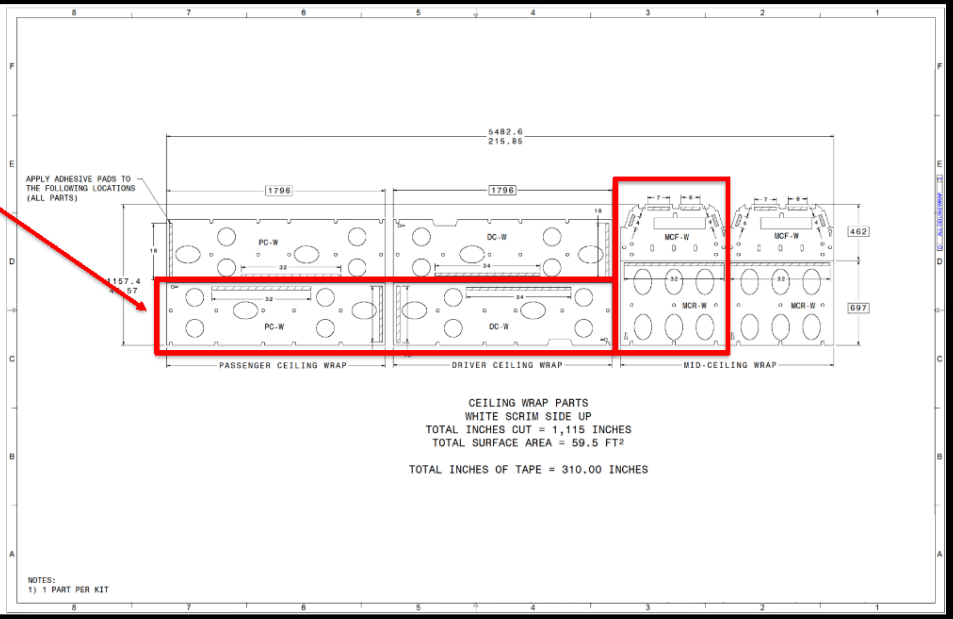
PARTS BULLETIN #683

- One Kit per Truck
- Apply to Back Side of Panel
- Parts may need to be trimmed to avoid edges of parts being visible. Easily trimmed with scissors.
- If slight edges are visible once panel is installed into vehicle, a heat gun can be used around edges of installed panel to reduce visibility
- Additional 2-sided tape may be necessary



Mid Sidewall Panel Insulation

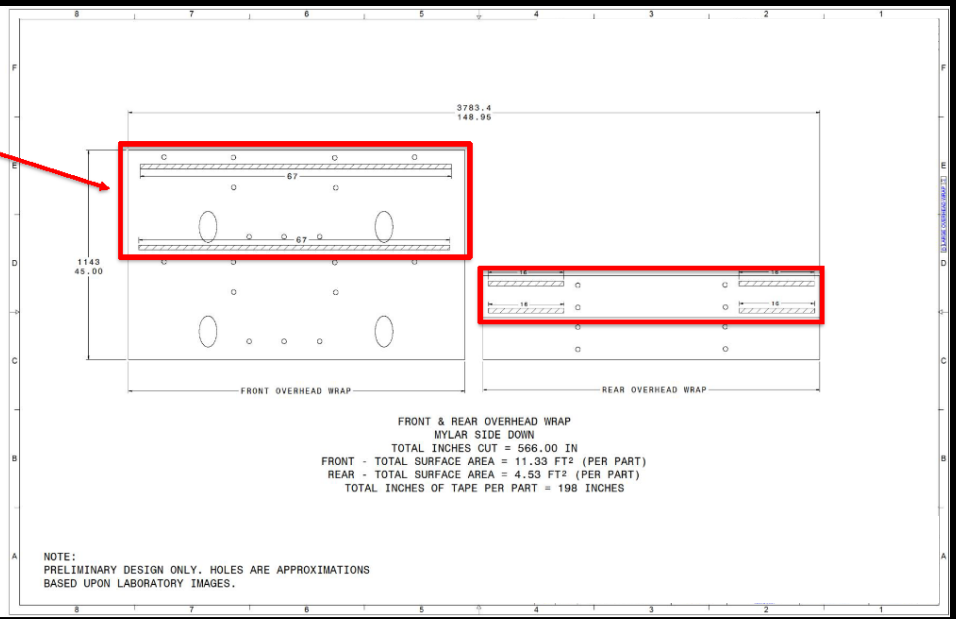
- One Kit per Truck
- Apply to Back Side of Panel
- Parts may need to be trimmed to avoid edges of parts being visible. Easily trimmed with scissors.
- If slight edges are visible once panel is installed into vehicle, a heat gun can be used around edges of installed panel to reduce visibility
- Additional 2-sided tape may be necessary



Headliner Panel Insulation

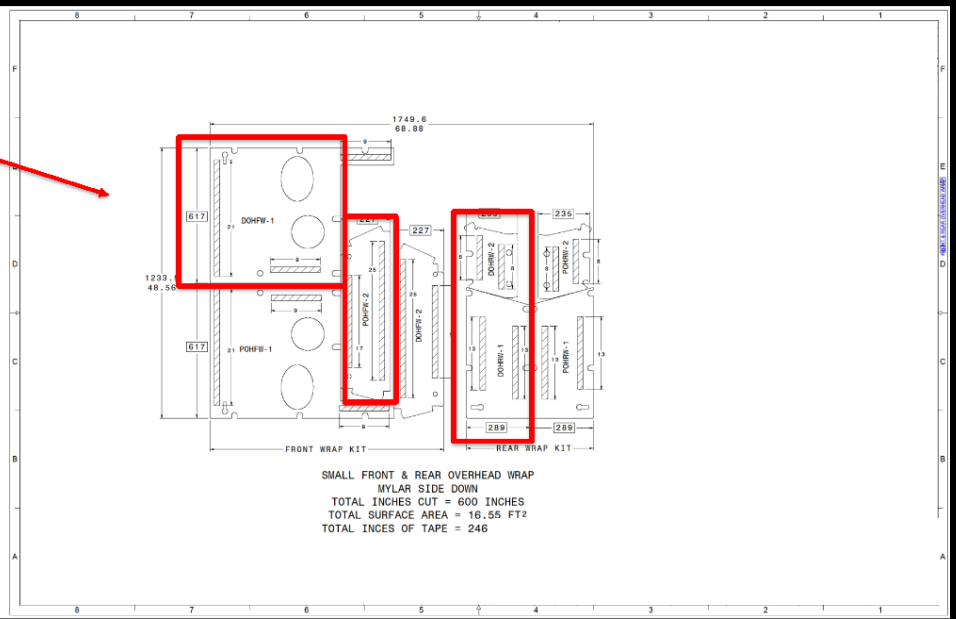
PARTS BULLETIN #683

- One Kit per Truck
- Apply to Back Side of Panel
- Parts may need to be trimmed to avoid edges of parts being visible. Easily trimmed with scissors.
- If slight edges are visible once panel is installed into vehicle, a heat gun can be used around edges of installed panel to reduce visibility
- Additional 2-sided tape may be necessary



Headliner Panel Insulation

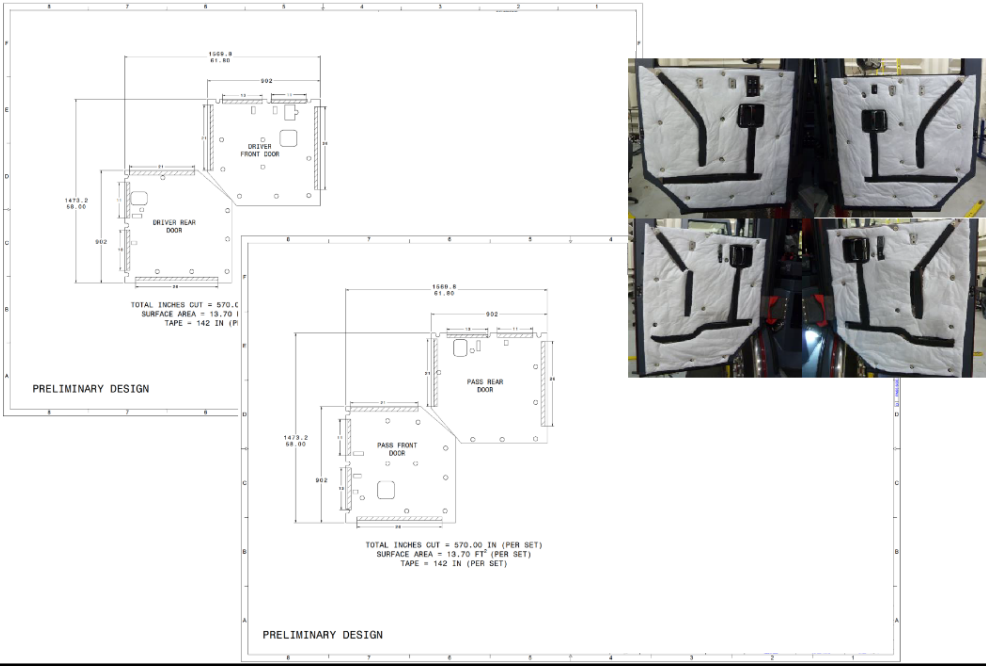
- One Kit per Truck
- Apply to Back Side of Panel
- Parts may need to be trimmed to avoid edges of parts being visible. Easily trimmed with scissors.
- If slight edges are visible once panel is installed into vehicle, a heat gun can be used around edges of installed panel to reduce visibility
- Additional 2-sided tape may be necessary



Headliner Panel Insulation

PARTS BULLETIN #683

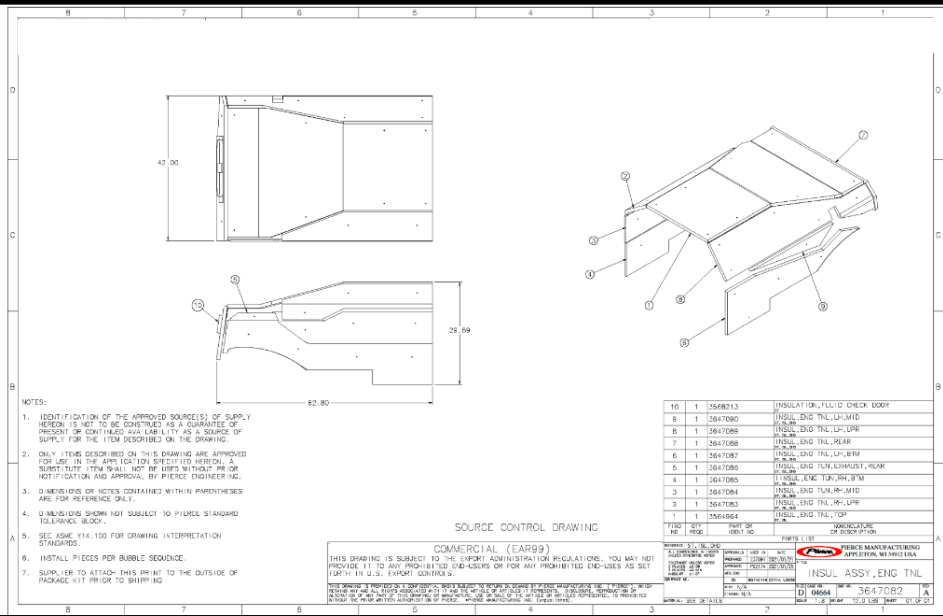
- One Kit per Truck
- DS Front and Rear
- PS Front and Rear
- Apply to Door Panel
- Parts may need to be trimmed to avoid edges of parts being visible. Easily trimmed with scissors.
- If slight edges are visible once panel is installed into vehicle, a heat gun can be used around edges of installed panel to reduce visibility
- Additional 2-sided tape may be necessary



Door Panel Insulation

Engine Compartment/Underbody:

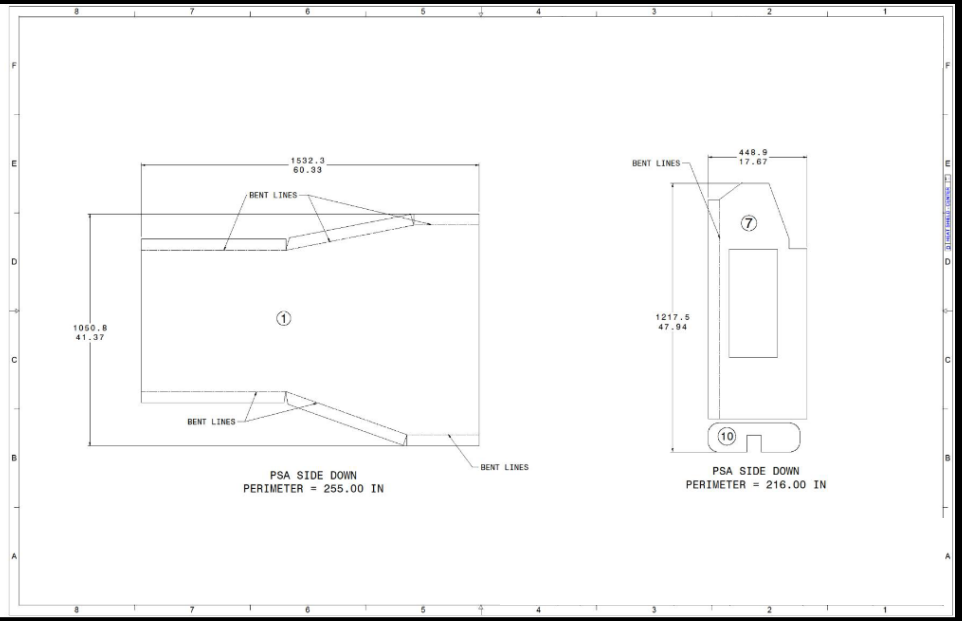
- One Kit per Truck
- Same part design as current material
- 1 layer of 1" foam with Aluminized Polyester facing and PSA



Engine Tunnel Insulation

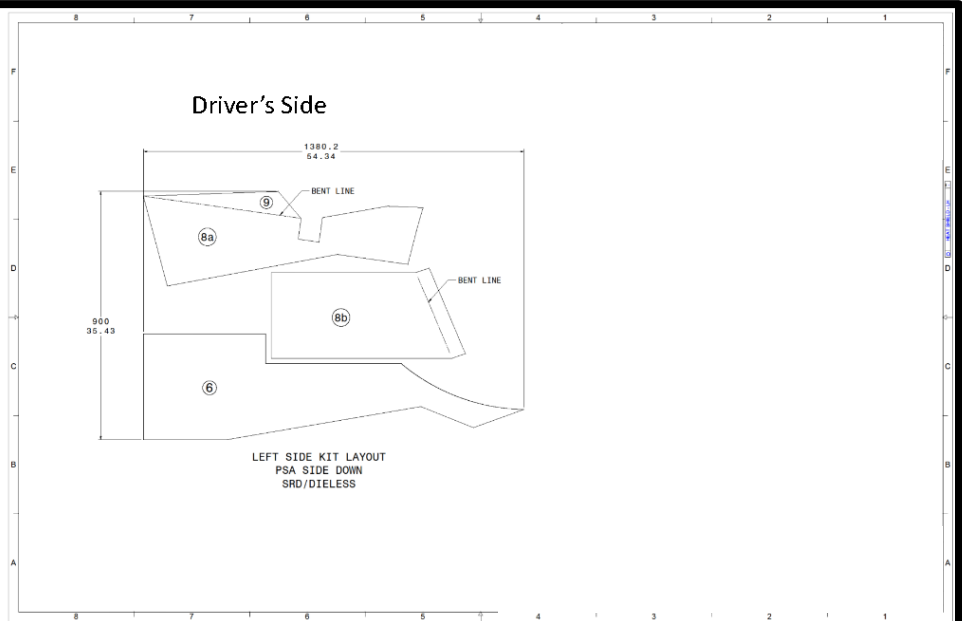
PARTS BULLETIN #683

- One Kit per Truck
- 1 layer of 3/16" with 0.002" aluminum foil and PSA (these parts are oversized and should overlap each other to create thermally sealed system)



Engine Tunnel Heatshields

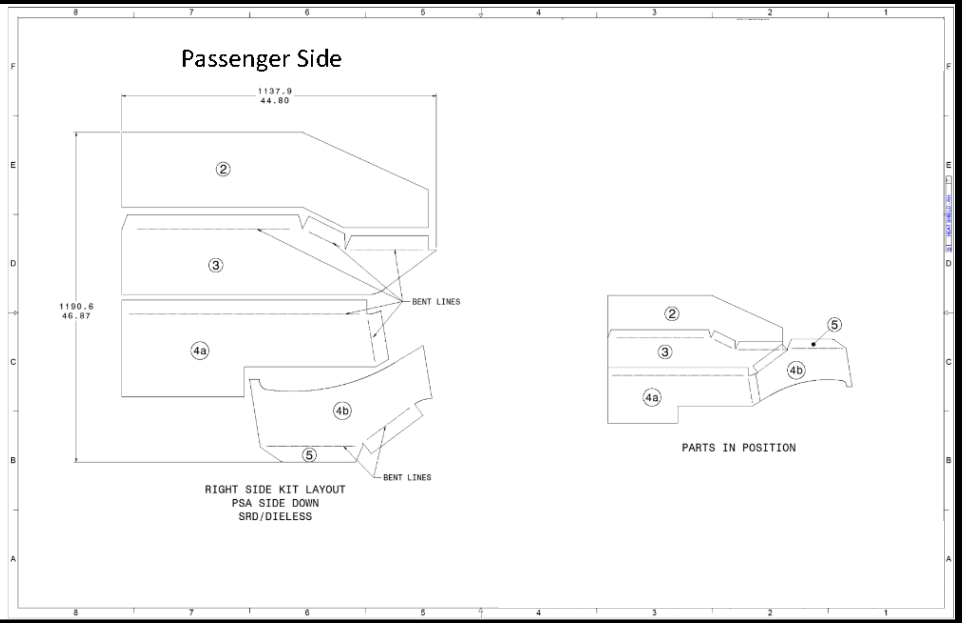
- One Kit per Truck
- 1 layer of 3/16" with 0.002" aluminum foil and PSA (these parts are oversized and should overlap each other to create thermally sealed system)



Engine Tunnel Heatshields

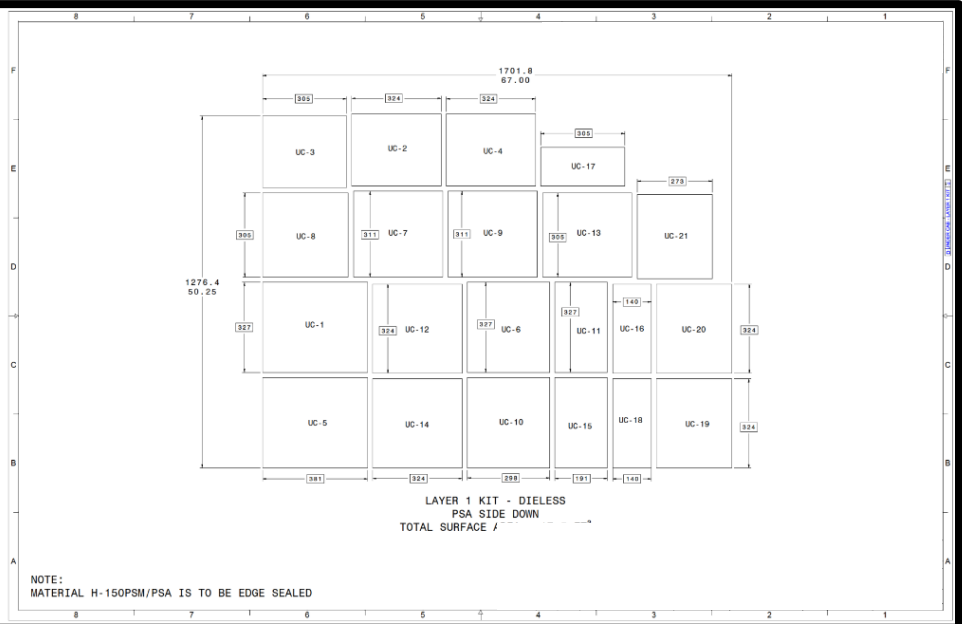
PARTS BULLETIN #683

- One Kit per Truck
- 1 layer of 3/16" with 0.002" aluminum foil and PSA (these parts are oversized and should overlap each other to create thermally sealed system)



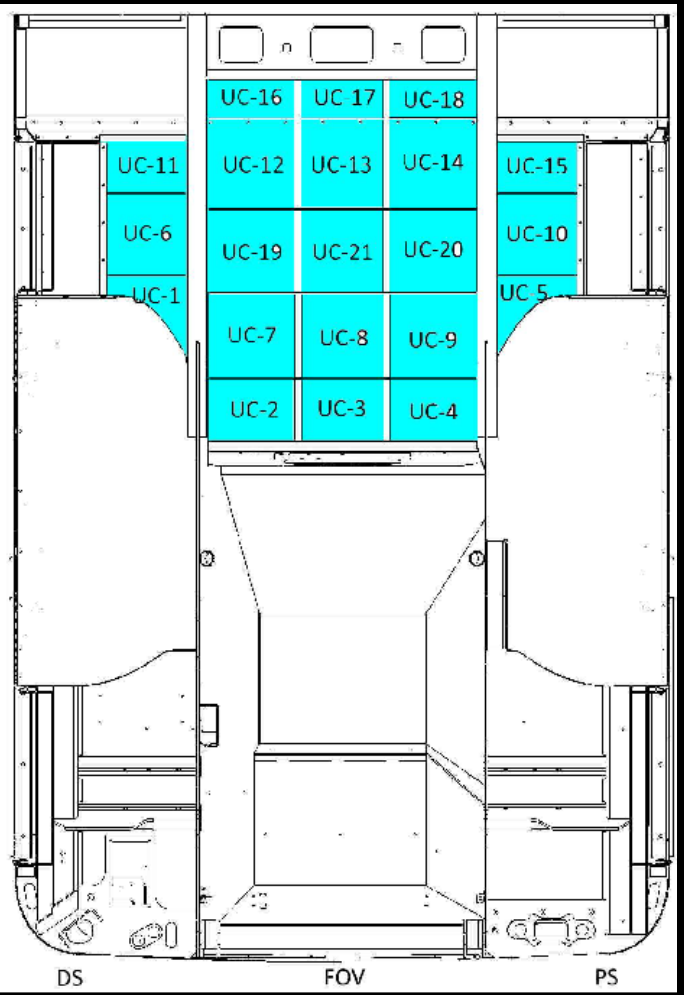
Engine Tunnel Heatshields

- One Kit per Truck
- 1 layer of 1.5" Foam with aluminized polyester facing



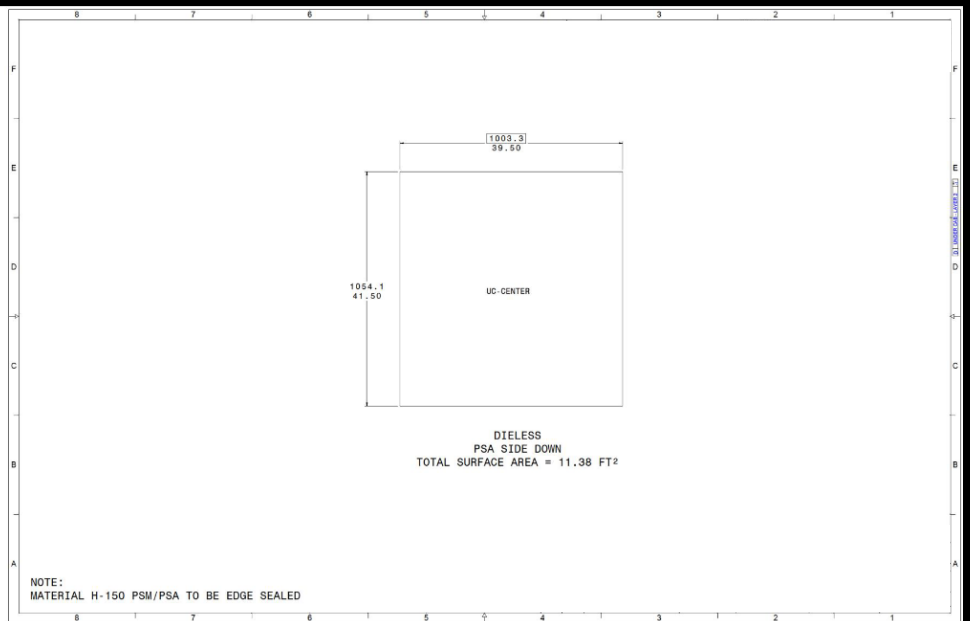
Under Crew Cab Insulation (Layer 1)

- One Kit per Truck
- 1 layer of 1.5" Foam with aluminized polyester facing
- UC-19, 20, 21 should be cut from spare material. They are not included in the kits that were shipped.



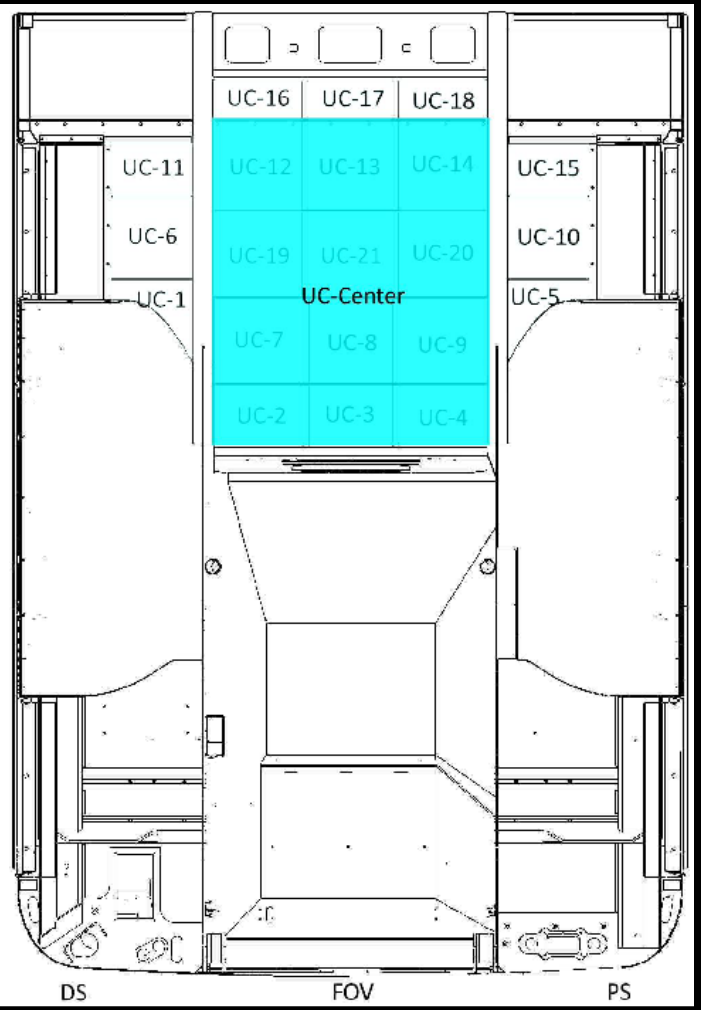
Under Crew Cab Insulation (Layer 1)

- One Kit per Truck
- 1 layer of 1.5" Foam with aluminized polyester facing



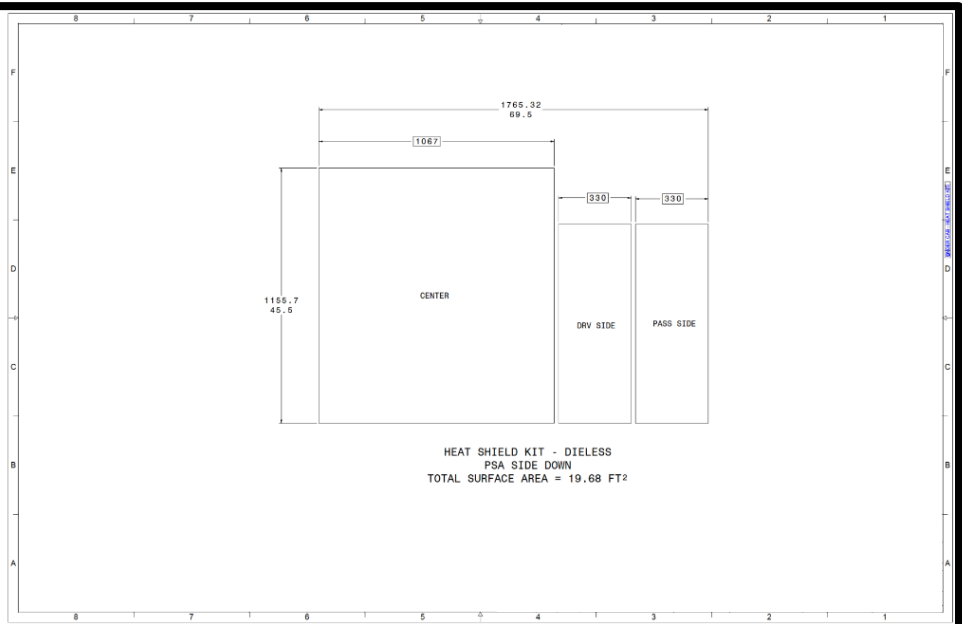
Under Crew Cab Insulation (Layer 2)

- One Kit per Truck
- 1 layer of 1.5" Foam with aluminized polyester facing



Under Crew Cab Insulation (Layer 2)

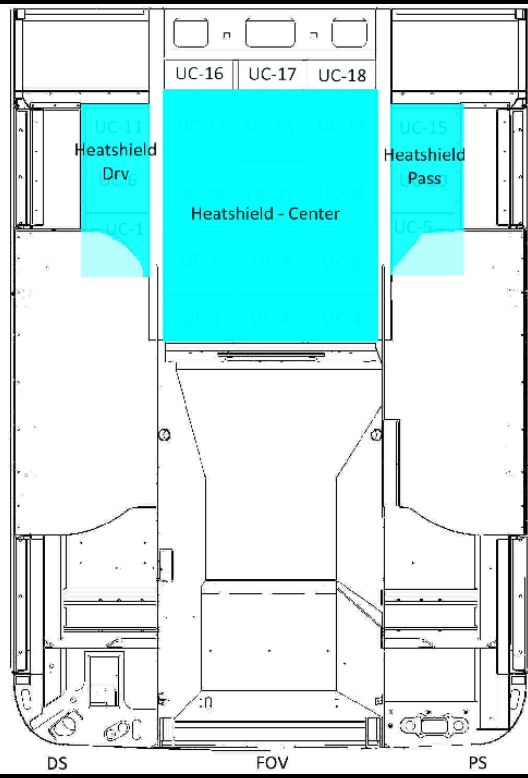
- One Kit per Truck
- 1 layer of 3/16" Foam with 0.002" Aluminum foil facing and PSA



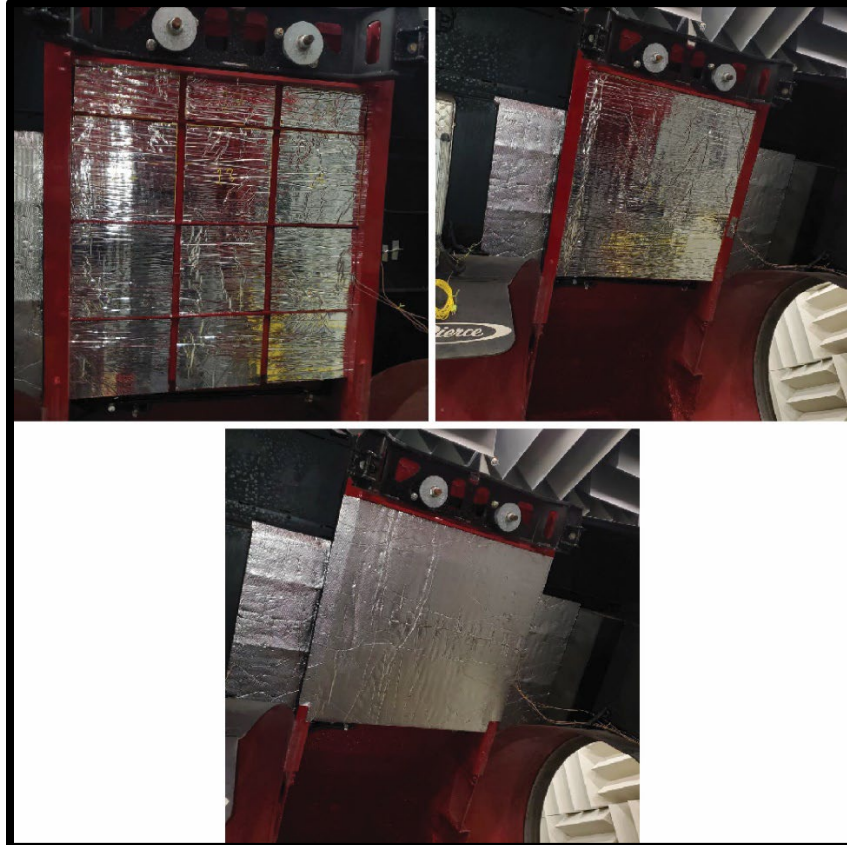
Under Crew Cab Heatshields

PARTS BULLETIN #683

- One Kit per Truck
- 1 layer of 3/16" Foam with 0.002" Aluminum foil facing and PSA



Under Crew Cab Heatshields



Crew Cab Underfloor

If any additional support is needed, please open a technical support incident on Pierceparts.com.