

Navigation Map Data Update

Service Category Audio/Visual/Telematics

Section Navigation/Multi Info Display

Market USA

Toyota Supports
 ASE Certification 

Applicability

YEAR(S)	MODEL(S)	ADDITIONAL INFORMATION
2020 - 2024	Supra	

REVISION NOTICE

April 09, 2024 Rev1:

- **Applicability has been updated to include 2021 – 2024 model year Supra vehicles. Any previous printed versions of this bulletin should be discarded.**

Introduction

Some 2020 – 2024 model year Supra vehicles equipped with navigation require a new process for updating map data. This procedure is unique to Supra and is available to customers at any time during their map update service period. Updated map data is released periodically, and there is no activation key/code required to update the vehicle map during the valid map update period. Follow the Repair Procedure in this bulletin to update the vehicle map data.

NOTE

This procedure does NOT apply if the map update period has expired.

Warranty Information

OP CODE	DESCRIPTION	TIME	OFF	T1	T2
N/A	Not Applicable to Warranty	–	–	–	–

Required Tools & Equipment

SPECIAL SERVICE TOOLS (SST)	PART NUMBER	QTY
Battery Diagnostic Tool*	DCA-8000P T	1

*Essential SST.

NOTE

Additional SSTs may be ordered by calling 1-800-933-8335 or by visiting *Home – Service Resources – Toyota Special Service Tools (SSTs)*.

Navigation Map Data Update

Navigation Update Procedure

USB Flash Drive Preparation Procedure

1. Click the hyperlink in the table below to navigate to the map data download page.

MODEL	MODEL YEAR	APPLICABLE FILE ON THE USB DRIVE
Supra	2020 – 2024	Supra Map Data Downloads

NOTE
Use a 64 GB USB flash drive or larger to store the applicable NEW map data file.

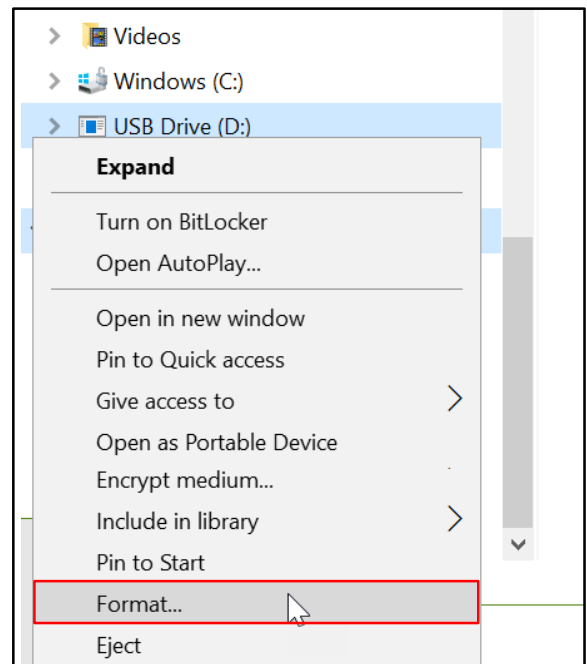
2. Select the applicable NEW map data file and download.

NOTE
The file size is larger than 30 GB and may take extra time depending on connection speed.

3. Format the USB flash drive.

- A. Insert the USB flash drive, right click on drive file, and select Format.

Figure 1.



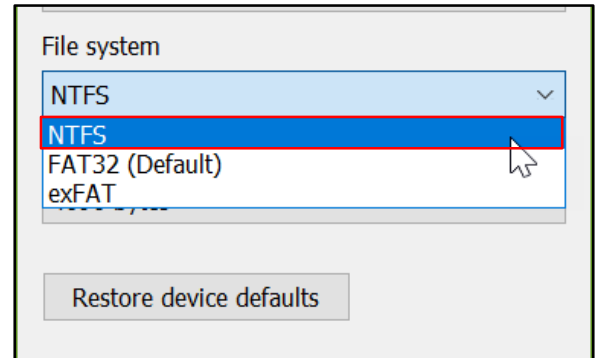
Navigation Map Data Update

Navigation Update Procedure (continued)

USB Flash Drive Preparation (continued)

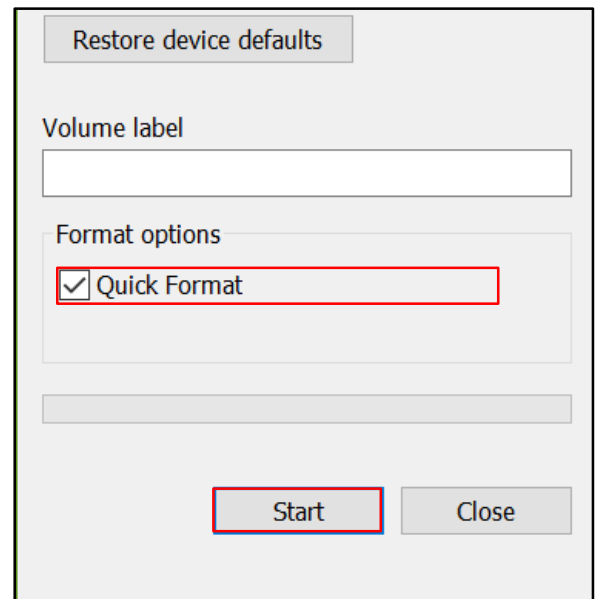
B. Under File system, select NTFS.

Figure 2.



C. Check the Quick Format box.

Figure 3.



D. Select Start to begin formatting.

NOTE

Formatting will erase ALL data on the USB flash drive. Please save data to a different location BEFORE formatting.

Navigation Map Data Update

Navigation Update Procedure (continued)

USB Flash Drive Preparation (continued)

4. Extract the map update file.

A. Navigate to the downloaded map update file.

B. Right click on the file and select Extract All.

C. AFTER the screen in Figure 5 appears, click Browse.

D. Select the USB flash drive as the destination and select Extract.

Figure 4.

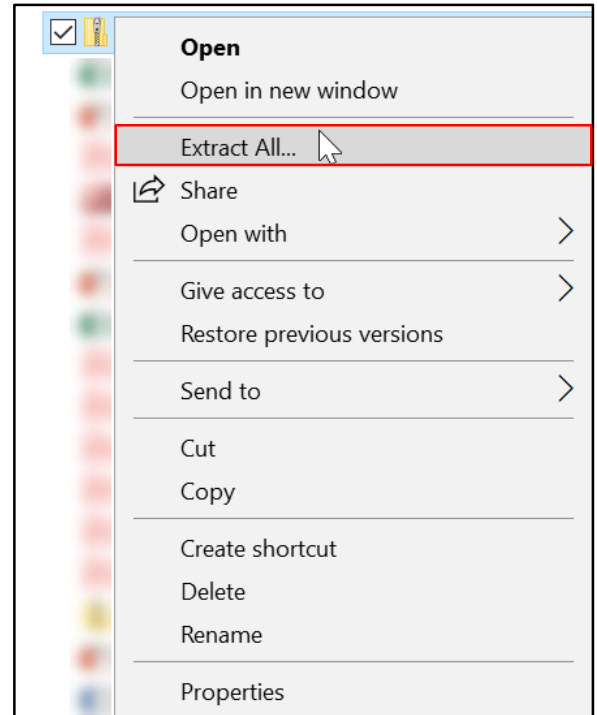
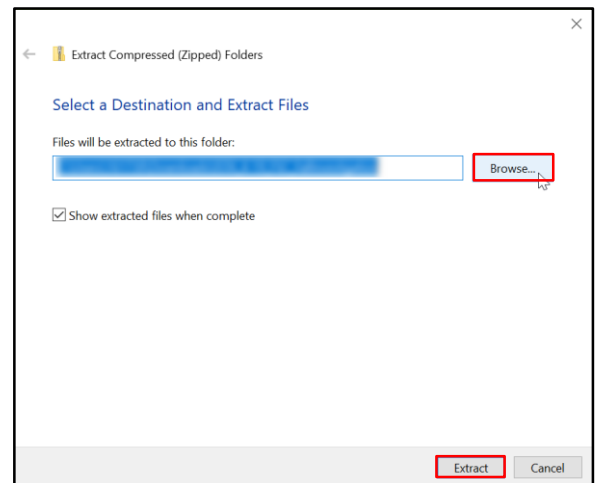


Figure 5.



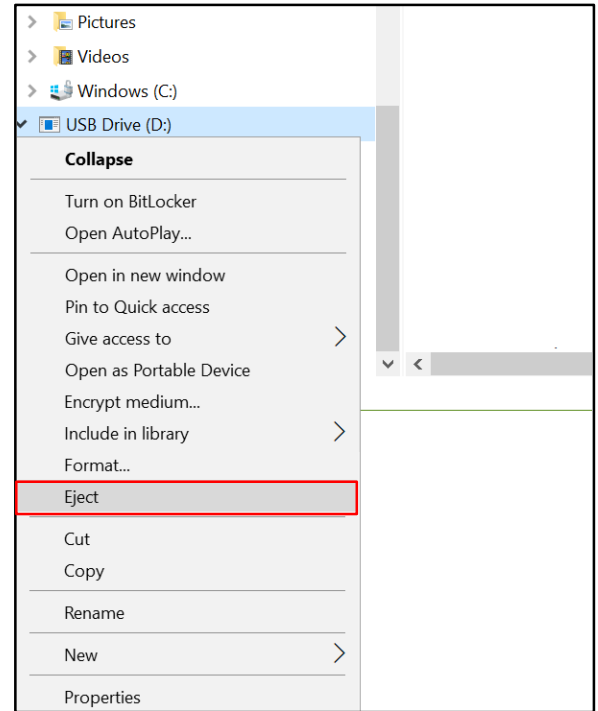
Navigation Map Data Update

Navigation Update Procedure (continued)

USB Flash Drive Preparation (continued)

5. AFTER the extraction is complete, eject the USB flash drive.
 - A. Right click on the USB flash drive in File Explorer and select Eject.
 - B. AFTER the ejection is complete, remove the USB flash drive and proceed to the Map Data Update Procedure.

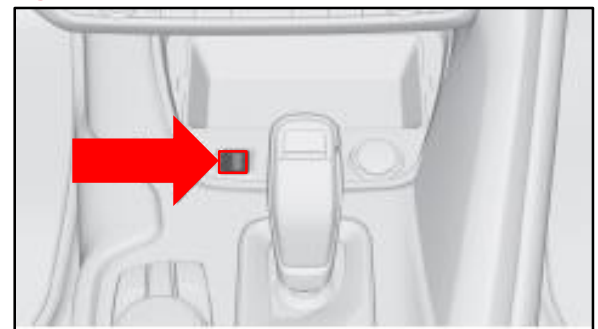
Figure 6.



Map Data Update

1. Connect the Battery Diagnostic Tool to the battery charge posts and enable charging mode.
2. Activate the PAD mode by pressing the ON button 3 times within 0.8 seconds WITHOUT the brake pedal depressed.
3. Insert the USB flash drive into the USB port located in the center console in front of the gear selector.

Figure 7.



Navigation Map Data Update

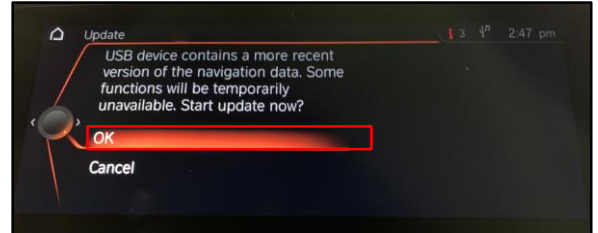
Navigation Update Procedure (continued)

Map Data Update (continued)

4. AFTER inserting the USB flash drive, the head unit will display the available updates.

- A. Select OK to start the update.

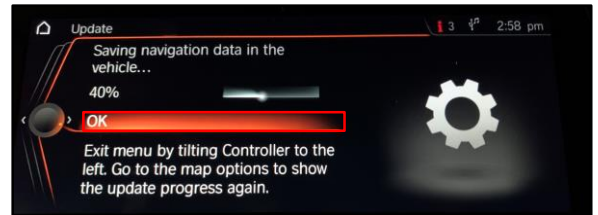
Figure 8.



5. The loading bar screen will show.

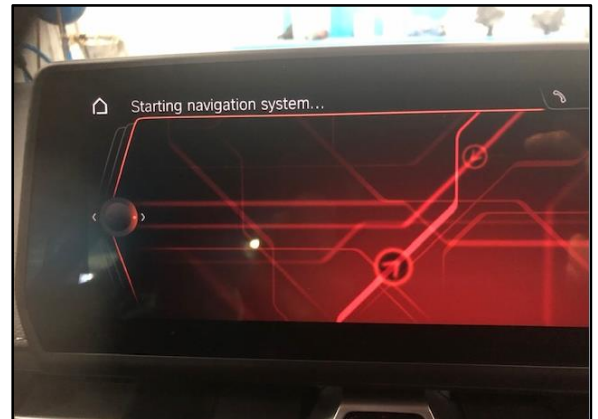
- A. AFTER the loading bar screen reaches 100% select OK.

Figure 9.



6. The navigation system will restart.

Figure 10.



Navigation Map Data Update

Navigation Update Procedure (continued)

Map Data Update (continued)

7. Select OK when the completed update notification displays.

Figure 11.



8. The vehicle map update is complete.
 - A. Remove the USB flash drive and verify proper navigation operation.