



# Technical Service Bulletin

SUBJECT:			No: <b>TSB-24-37-002</b>
<b>REAR SUSPENSION REMOVAL/INSTALLATION – SERVICE MANUAL REVISION</b>			DATE: <b>June 2024</b>
			MODEL: <b>Outlander Plug-in Hybrid</b>
<b>CIRCULATE TO:</b>	<input type="checkbox"/> GENERAL MANAGER	<input checked="" type="checkbox"/> PARTS MANAGER	<input checked="" type="checkbox"/> TECHNICIAN
<input checked="" type="checkbox"/> SERVICE ADVISOR	<input checked="" type="checkbox"/> SERVICE MANAGER	<input checked="" type="checkbox"/> WARRANTY PROCESSOR	<input type="checkbox"/> SALES MANAGER

## PURPOSE

This TSB provides Rear Suspension removal and installation procedure corrections and additional information for applicable Service Manuals.

## AFFECTED VEHICLES

2023-2024 Outlander Plug-in Hybrid

## AFFECTED SERVICE MANUAL

2023-2024 Outlander Plug-in Hybrid Service Manual

## PROCEDURE

Please use the chart below to replace the pages in the affected 2023-2024 Outlander Plug-in Hybrid Service Manual Body section.

Applicable Manual	Pub. No.	Applicable Title	Content
2023 OUTLANDER PLUG-IN HYBRID Service Manual  2024 OUTLANDER PLUG-IN HYBRID Service Manual	MSCD-027B-2023	STEERING <ul style="list-style-type: none"> <li>↳ STEERING SYSTEM               <ul style="list-style-type: none"> <li>↳ REMOVAL AND INSTALLATION                   <ul style="list-style-type: none"> <li>↳ STEERING GEAR AND LINKAGE                       <ul style="list-style-type: none"> <li>↳ Exploded View</li> </ul> </li> </ul> </li> </ul> </li> </ul>	Attached sheet 2
		BODY EXTERIOR, DOORS, ROOF & VEHICLE SECURITY <ul style="list-style-type: none"> <li>↳ EXTERIOR               <ul style="list-style-type: none"> <li>↳ REMOVAL AND INSTALLATION                   <ul style="list-style-type: none"> <li>↳ ROOF SIDE MOLDING                       <ul style="list-style-type: none"> <li>↳ Removal and Installation</li> </ul> </li> </ul> </li> </ul> </li> </ul>	Attached sheet 3
	DRIVER CONTROLS <ul style="list-style-type: none"> <li>↳ WIPER &amp; WASHER               <ul style="list-style-type: none"> <li>↳ SYSTEM DESCRIPTION                   <ul style="list-style-type: none"> <li>↳ SYSTEM                       <ul style="list-style-type: none"> <li>↳ FRONT WIPER AND WASHER SYSTEM                           <ul style="list-style-type: none"> <li>↳ Fail-Safe</li> </ul> </li> </ul> </li> </ul> </li> </ul> </li> </ul>	Attached sheet 4	
	ELECTRICAL & POWER CONTROL <ul style="list-style-type: none"> <li>↳ BODY CONTROL SYSTEM               <ul style="list-style-type: none"> <li>↳ SYSTEM DESCRIPTION                   <ul style="list-style-type: none"> <li>↳ DIAGNOSIS SYSTEM (BCM)                       <ul style="list-style-type: none"> <li>↳ BCM                           <ul style="list-style-type: none"> <li>↳ M.U.T.-III SE Function (BCM – BCM)</li> </ul> </li> </ul> </li> </ul> </li> </ul> </li> </ul>	Attached sheet 5	
	ELECTRICAL & POWER CONTROL <ul style="list-style-type: none"> <li>↳ BODY CONTROL SYSTEM               <ul style="list-style-type: none"> <li>↳ BASIC INSPECTION                   <ul style="list-style-type: none"> <li>↳ ADDITIONAL SERVICE WHEN REPLACING BCM                       <ul style="list-style-type: none"> <li>↳ Work Procedure</li> </ul> </li> </ul> </li> </ul> </li> </ul>	Attached sheet 6	
	Added below ELECTRICAL & POWER CONTROL <ul style="list-style-type: none"> <li>↳ BODY CONTROL SYSTEM               <ul style="list-style-type: none"> <li>↳ BASIC INSPECTION                   <ul style="list-style-type: none"> <li>↳ CONFIGURATION (BCM)                       <ul style="list-style-type: none"> <li>↳ Work Procedure</li> </ul> </li> </ul> </li> </ul> </li> </ul>	Attached sheet 7	

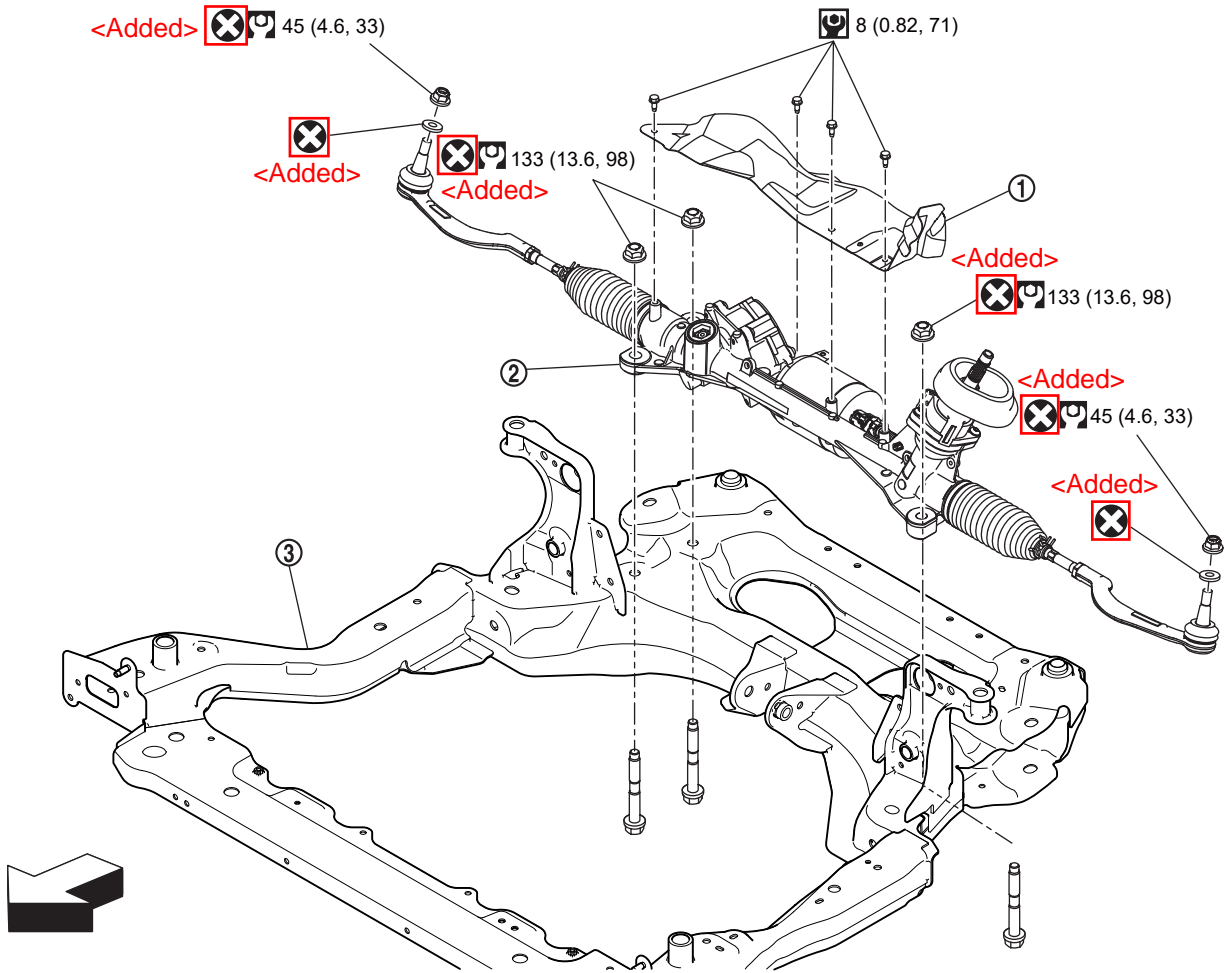
Copyright 2024, Mitsubishi Motors North America, Inc.

The information contained in this bulletin is subject to change. For the latest version of this document, go to the Mitsubishi Dealer Link, MEDIC, or the Mitsubishi Service Information website ([www.mitsubishitechinfo.com](http://www.mitsubishitechinfo.com)).

# STEERING SYSTEM

## Exploded View

### REMOVAL

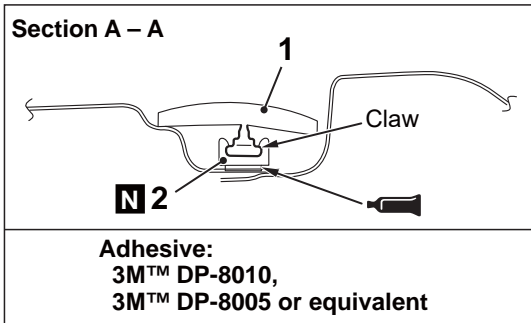
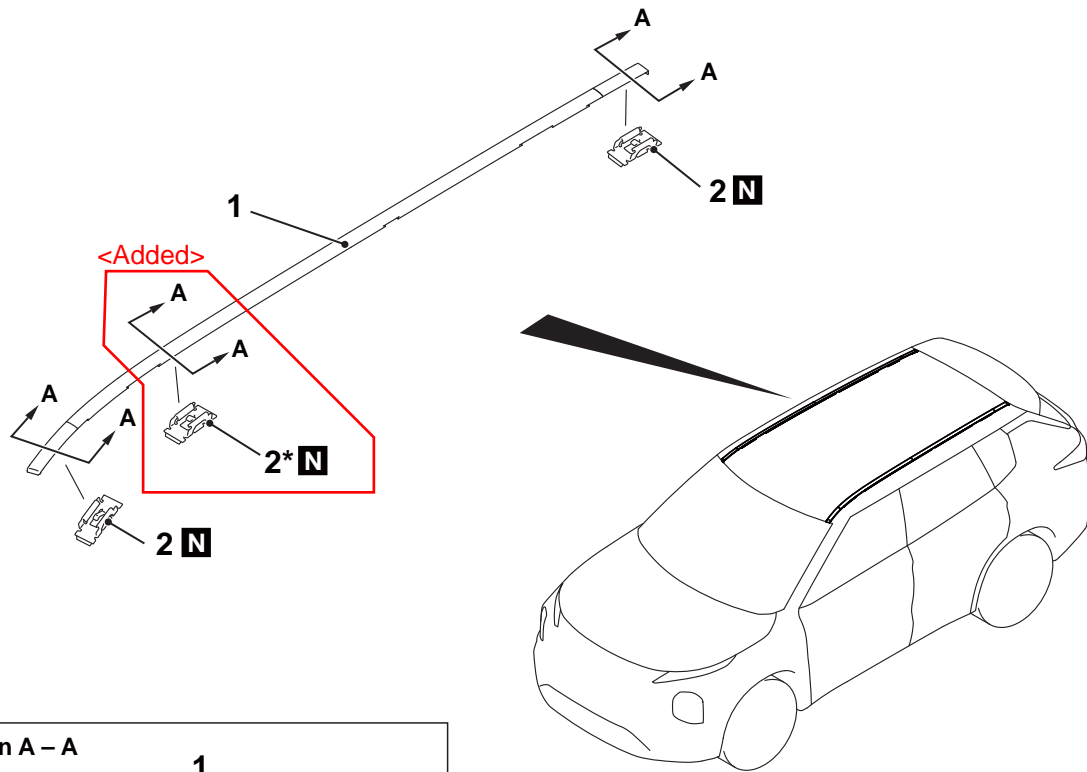


DF100AONAL00USA

①	Heat insulator	②	Steering gear assembly	③	Front suspension member
	: Vehicle front				
	: Nm (kg-m, ft-lb)				
	: N-m (kg-m, in-lb)				

EXTERIOR

Removal and Installation



<Added> \*:Some models

DF2002YHAB

Removal steps	
>>B<<	1. Roof side molding
>>A<<	2. Roof side molding clip

## EXTERIOR

## INSTALLATION SERVICE POINTS

## &gt;&gt;A&lt;&lt; ROOF SIDE MOLDING CLIP INSTALLATION

1.Remove any remnants of the old tape. Then degrease the adhesion surface by using a cloth moistened with Mitsubishi Motors Genuine Parts Cleaner (MZ100387) or equivalent.

2.Apply the specified adhesive to the adhesion surface of the roof side molding clip.

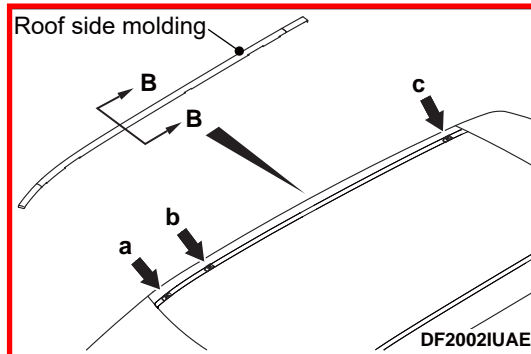
Specified adhesive: 3M™ DP-8010, 3M™ DP-8005 or equivalent

3.Adhere the roof side molding clips to the inside of the scribe line. <Changed>

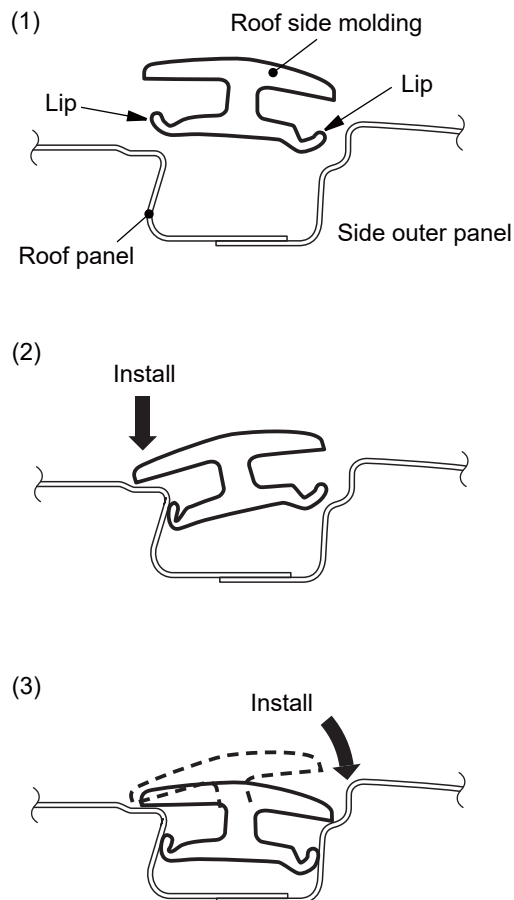
4.Wait for at least 10 minutes. Then install the roof drip molding assembly.

## &gt;&gt;B&lt;&lt; ROOF SIDE MOLDING INSTALLATION

<Changed>



## Section B – B



<Changed>

Install the roof side molding with clips in the order of clips a, b, and c so that there is no floating or sagging on the roof side molding. When installing, initially install the lip of the roof panel side.

## WIPER & WASHER

### Fail-Safe

#### IPDM E/R

### CAN COMMUNICATION CONTROL

When CAN communication with ECM and BCM is impossible, IPDM E/R performs fail-safe control. After CAN communication recovers normally, it also returns to normal control.

#### If No CAN Communication Is Available With BCM

Control part	Fail-safe operation
Front wiper	<ul style="list-style-type: none"> <li>The status just before activation of fail-safe control is maintained until the power supply mode of the electric motor switch is turned OFF while the front wiper is operating at low or high speed.</li> <li>The wiper is operated at low speed until the power supply mode of the electric motor switch is turned OFF if the fail-safe control is activated while the front wiper is set in the INT mode and the front wiper motor is operating.</li> </ul>

### FRONT WIPER CONTROL

IPDM E/R detects front wiper stop position by front wiper stop position signal.

When front wiper stop position signal is in the condition listed below while the front wiper is operating, IPDM E/R activates the fail-safe.

Electric motor switch	Front wiper switch	Front wiper stop position signal	Fail-safe
ON	OFF	The signal does not change from the battery voltage for 10 seconds.	Stops front wiper power supply for 20 seconds
	Except OFF	The signal does not change for 10 seconds.	

### BCM <WITH LIGHT & RAIN SENSOR>

#### Fail-safe Control By Light & Rain Sensor Malfunction

BCM detects the light & rain sensor serial link error and the light & rain sensor malfunction.




BCM controls the following fail-safe when light & rain sensor has a malfunction.

- Front wiper switch AUTO and sensing rain drop: The condition just before the activation of fail-safe is maintained until the front wiper switch is turned OFF.
- Front wiper switch AUTO and not sensing rain drop: The condition just before the activation of fail-safe (front wiper OFF) is maintained until the front wiper switch is turned OFF.



<Corrected>

## BODY CONTROL SYSTEM

## SPECIAL FUNCTION

Function name	Item	Description	
Chassis No./VIN Registration	-	Register of the vehicle identification number when replacing BCM.	
Setting change	Key lock hazard flashing pattern	 <b>NOTE:</b> This item is displayed, but cannot be used.	<Changed>
	Key unlock hazard flashing pattern	 <b>NOTE:</b> This item is displayed, but cannot be used.	
	Headlight afterglow	 <b>NOTE:</b> This item is displayed, but cannot be used.	
	Comfort flasher	Enable or disable the comfort flasher function.	
	Improvement of Remote climate control (operation time)	Change the settings of the remote climate control (operation time).	<Added>
	Improvement of Remote climate control (start request time)	Change the settings of the remote climate control (start request time).	
MAC KEY writing	-	Write MAC key to BCM.	

## ACTUATOR TEST

Item	Operation	Description
Front window defogger (passenger side)	ON	 <b>NOTE:</b> This item is displayed, but cannot be tested.
	OFF	
Front window defogger (driver side)	ON	 <b>NOTE:</b> This item is displayed, but cannot be tested.
	OFF	

# BODY CONTROL SYSTEM

## Work Procedure

### 1. CHECK THE SETTING VALUES OF THE REMOTE CLIMATE CONTROL OF THE BCM BEFORE REPLACEMENT

Before replacing the BCM, check the setting values of the following items with the "Setting change" of the special function.

- Item No. 9: Improvement of Remote climate control (operation time)
- Item No. 10: Improvement of Remote climate control (start request time)

For details on how to check the setting values, refer to [CHANGING THE SETTING VALUES OF THE REMOTE CLIMATE CONTROL](#).

>>

[GO TO 2.](#)

### 2. REPLACE BCM

<Added>

Replace BCM. Refer to [BCM](#).

>>

[GO TO 3.](#)

### 3. WRITING VEHICLE SPECIFICATION

Perform configuration (BCM). Refer to [CONFIGURATION \(BCM\)](#).

>>

[GO TO 4.](#)

<Added>

### 4. CHANGE THE SETTING VALUES OF THE REMOTE CLIMATE CONTROL OF THE BCM AFTER REPLACEMENT

#### CAUTION:

When the C/U setting of the BCM is performed in step 3, the setting value of the remote climate control is set to "Function ON", so it is necessary to match the setting value with the BCM before replacement.  
If the set values are different, the remote climate control does not work properly.

If the setting value of the following items of the BCM before replacement confirmed in step 1 is "Function OFF", change the setting value of the BCM to "Function OFF" after replacement.

- Item No. 9: Improvement of Remote climate control (operation time)
- Item No. 10: Improvement of Remote climate control (start request time)

For details on how to check the setting values, refer to [CHANGING THE SETTING VALUES OF THE REMOTE CLIMATE CONTROL](#).

>>

[GO TO 5.](#)

### 5. PAIRING OF BCM AND INTELLIGENT KEY UNIT

#### CAUTION:

When before pairing of BCM and Keyless operation key unit, always writing the BCM configuration. Or not doing so, BCM control function does not operate normally.

Perform the pairing of BCM and Keyless operation key unit. Press UNLOCK button of Keyless operation key.

>>

[GO TO 6.](#)

### 6. REGISTER OF VEHICLE IDENTIFICATION NUMBER

 With M.U.T.-III SE

1. Select "VIN REGISTRATION" of BCM work support item.
2. Refer to M.U.T.-III SE and follow the on-screen instructions.

>>

[GO TO 7.](#) 5/21/2024

# BODY CONTROL SYSTEM

## CHANGING THE SETTING VALUES OF THE REMOTE CLIMATE CONTROL

### Description

When replacing the BCM, it is necessary to adjust the setting value of the remote climate control before and after replacing the BCM.

If the set value is different, the remote climate control will not operate properly, so check and change the setting value according to the procedure (Refer to [CHANGING THE SETTING VALUES OF THE REMOTE CLIMATE CONTROL](#)).

### Work Procedure

#### CONFIRMATION OF THE SETTING VALUES

1. Turn the power supply mode of the electric motor switch to ON.
2. Using M.U.T.-III SE, select "Setting change" in the "Special Function" screen of "BCM".
3. Check the setting values for each of the following items.
  - Item No. 9: Improvement of Remote climate control (operation time)

System select		BCM		Special Function		Setting change	
Selected Command	9	Improvement of Remote climate control (operation time)		Data List		No.	Name
Parameter		Value		No.		Name	
Name				1	Improvement of Remote climate control (operation time)	Activated	
Status select	Activated						
Press the OK button to execute.							

**DF30014IAC**

- Item No. 10: Improvement of Remote climate control (start request time)

System select		BCM		Special Function		Setting change	
Selected Command	10	Improvement of Remote climate control (start request time)		Data List		No.	Name
Parameter		Value		No.		Name	
Name				1	Improvement of Remote climate control (start request time)	Activated	
Status select	Activated						
Press the OK button to execute.							

**DF30014IAD**

<Added>

# BODY CONTROL SYSTEM

## CHANGE THE SETTING VALUES

1. Turn the power supply mode of the electric motor switch to ON.
2. Using M.U.T.-III SE, select "Setting change" in the "Special Function" screen of "BCM".
3. Change the setting values for each of the following items.
  - Item No. 9: Improvement of Remote climate control (operation time)

System select		BCM		Special Function		Setting change	
Selected Command	9	Improvement of Remote climate control (operation time)		Data List		No.	Name
Parameter		Value		1	Improvement of Remote climate control (operation time)	Activated	
Name							
Status select	Activated						
	Deactivated						
	Activated						
Press the OK button to execute.							

**DF30014IAE**

- Item No. 10: Improvement of Remote climate control (start request time)

System select		BCM		Special Function		Setting change	
Selected Command	10	Improvement of Remote climate control (start request time)		Data List		No.	Name
Parameter		Value		1	Improvement of Remote climate control (start request time)	Activated	
Name							
Status select	Activated						
	Deactivated						
	Activated						
Press the OK button to execute.							

**DF30014IAF**

<Added>