

Subject: A-PILLAR TRIM HIDDEN FELT PAD IS VISIBLE	Bulletin No.: 09-031/24
	Last Issued : 06/10/2024

BULLETIN NOTES

APPLICABLE MODEL(S)/VINS

2023 CX-50 (US/Canada spec vehicles with VINS lower than 7MMVA*****107824 (produced before June 15, 2022)

DESCRIPTION

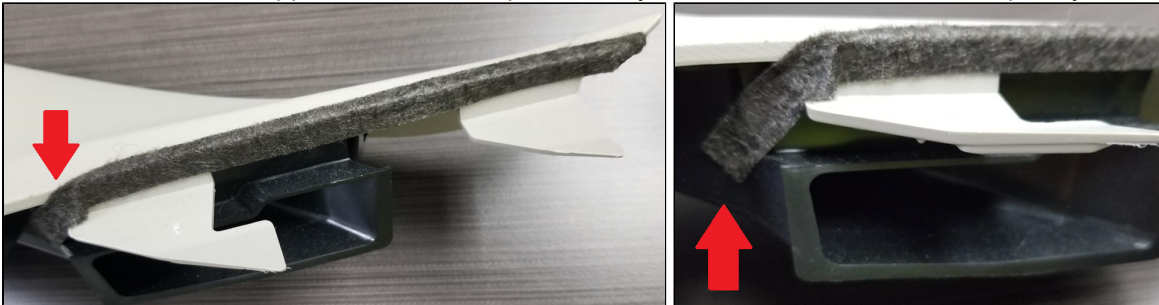
Some customers may complain that the black felt padding on the A-pillar trim is visible. This is caused by the felt tape on the A-pillar trim not having enough adhesive. It may cause the felt to become detached and move to the visible area in the dash due to time passing or from heat. To eliminate this concern, the felt tape has been improved with more adhesive.

Customers having this concern should have their vehicle repaired using the following repair procedure.

REPAIR PROCEDURE

1. Verify the customer concern.
2. Remove the A-pillar trim on both sides of the vehicle according to the instruction on MGSS ([A-PILLAR TRIM REMOVAL/INSTALLATION](#)).
3. Remove the old felt tape from both A-pillar trim pieces.

NOTE: The front is wrapped and locked in place. If any of it breaks off, remove it completely.



CONSUMER NOTICE: The information and instructions in this bulletin are intended for use by skilled technicians. Mazda technicians utilize the proper tools/ equipment and take training to correctly and safely maintain Mazda vehicles. These instructions should not be performed by "do-it-yourselfers." Customers should not assume this bulletin applies to their vehicle or that their vehicle will develop the described concern. To determine if the information applies, customers should contact their nearest authorized Mazda dealership. Mazda North American Operations reserves the right to alter the specifications and contents of this bulletin without obligation or advance notice. All rights reserved. No part of this bulletin may be reproduced in any form or by any means, electronic or mechanical--including photocopying and recording and the use of any kind of information storage and retrieval system ---without permission in writing.

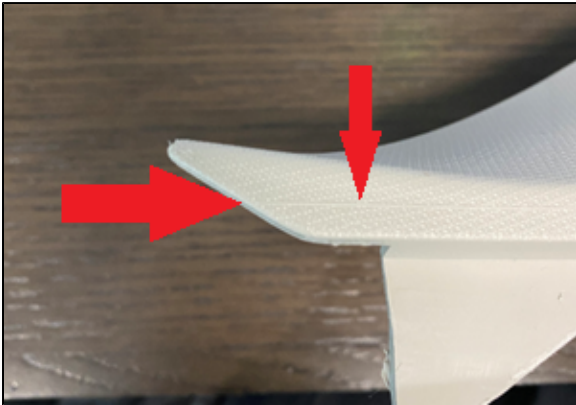
4. Clean the circled area with rubbing alcohol.



5. Remove 2 felt strips from the felt sheet.

6. Start applying the felt tape at the arrow and follow the faint mold line to the end.

NOTE: DO NOT CUT THE TAPE.



7. Wrap the felt tape around the bottom edge as shown, and continue to the back of the colored portion of the trim.

NOTE: DO NOT CUT THE TAPE.

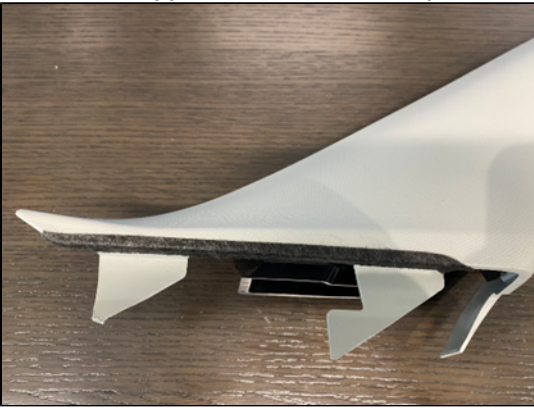


CONSUMER NOTICE: The information and instructions in this bulletin are intended for use by skilled technicians. Mazda technicians utilize the proper tools/ equipment and take training to correctly and safely maintain Mazda vehicles. These instructions should not be performed by "do-it-yourselfers." Customers should not assume this bulletin applies to their vehicle or that their vehicle will develop the described concern. To determine if the information applies, customers should contact their nearest authorized Mazda dealership. Mazda North American Operations reserves the right to alter the specifications and contents of this bulletin without obligation or advance notice. All rights reserved. No part of this bulletin may be reproduced in any form or by any means, electronic or mechanical--including photocopying and recording and the use of any kind of information storage and retrieval system ---without permission in writing.

8. Take the unattached felt tape end, twist it slightly, and press it down onto the black tube attached to the A-pillar trim.



9. The final appearance of the felt tape should look like this:



10. Install the A-pillar trim pieces according to the instruction on MGSS (A-PILLAR TRIM REMOVAL/INSTALLATION).

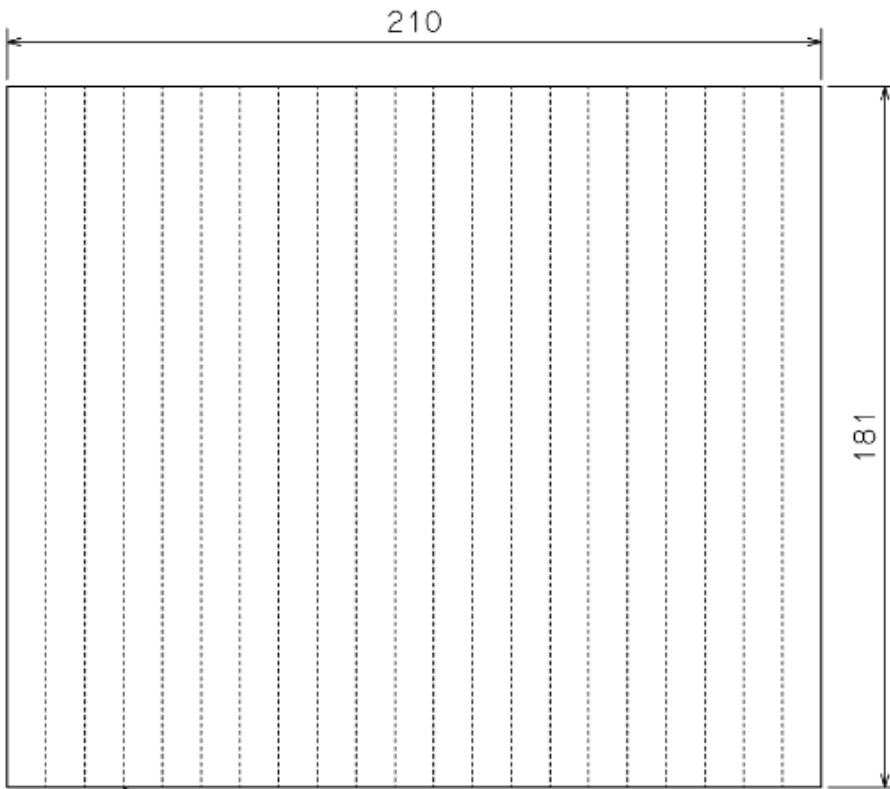
11. Verify the repair by confirming the felt is not visible.

PARTS INFORMATION

Parts Number	Description	Qty.	Notes
VAY1-68-2A3	A-PILLAR FELT	1	One sheet repairs 10 vehicles
BCJH-68-162	CLIP (R),TRIM	1	[R] with Grommet, Right side
BCJL-68-162	CLIP (L),TRIM	1	[R] with Grommet, Left side

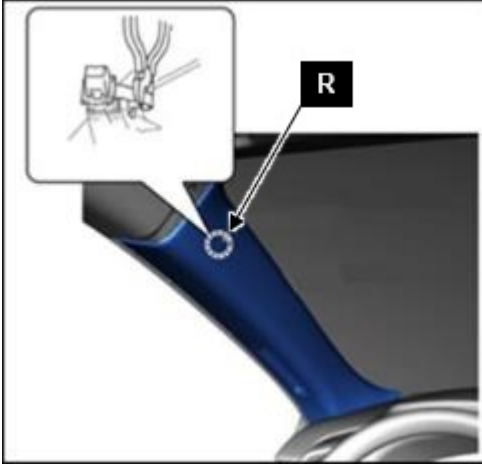
CONSUMER NOTICE: The information and instructions in this bulletin are intended for use by skilled technicians. Mazda technicians utilize the proper tools/ equipment and take training to correctly and safely maintain Mazda vehicles. These instructions should not be performed by "do-it-yourselfers." Customers should not assume this bulletin applies to their vehicle or that their vehicle will develop the described concern. To determine if the information applies, customers should contact their nearest authorized Mazda dealership. Mazda North American Operations reserves the right to alter the specifications and contents of this bulletin without obligation or advance notice. All rights reserved. No part of this bulletin may be reproduced in any form or by any means, electronic or mechanical---including photocopying and recording and the use of any kind of information storage and retrieval system ---without permission in writing.

Felt



FELT SHEET
SIZE : 210 x 181 x t0.5
QTY : 1

CONSUMER NOTICE: The information and instructions in this bulletin are intended for use by skilled technicians. Mazda technicians utilize the proper tools/ equipment and take training to correctly and safely maintain Mazda vehicles. These instructions should not be performed by "do-it-yourselfers." Customers should not assume this bulletin applies to their vehicle or that their vehicle will develop the described concern. To determine if the information applies, customers should contact their nearest authorized Mazda dealership. Mazda North American Operations reserves the right to alter the specifications and contents of this bulletin without obligation or advance notice. All rights reserved. No part of this bulletin may be reproduced in any form or by any means, electronic or mechanical---including photocopying and recording and the use of any kind of information storage and retrieval system ---without permission in writing.

Replacement Parts Location**NOTE:** Illustration Indicates left side.(RH side identical)**WARRANTY INFORMATION****NOTE:**

- This warranty information applies only to verified customer complaints on vehicles eligible for warranty repair.
- This repair will be covered under Mazda's New Vehicle Limited Warranty term.
- Additional diagnostic time cannot be claimed for this repair.

Warranty Type	A
Symptom Code	89
Damage Code	9B
Part Number Main Cause	VA40-68-170 75
Quantity	0
Operation Number / Labor Hours:	XXWPRXRX / 0.4 Hrs. (Both side)

NOTE: Claim the clips as related parts. Felt strips are included with the labor.

CONSUMER NOTICE: The information and instructions in this bulletin are intended for use by skilled technicians. Mazda technicians utilize the proper tools/ equipment and take training to correctly and safely maintain Mazda vehicles. These instructions should not be performed by "do-it-yourselfers." Customers should not assume this bulletin applies to their vehicle or that their vehicle will develop the described concern. To determine if the information applies, customers should contact their nearest authorized Mazda dealership. Mazda North American Operations reserves the right to alter the specifications and contents of this bulletin without obligation or advance notice. All rights reserved. No part of this bulletin may be reproduced in any form or by any means, electronic or mechanical---including photocopying and recording and the use of any kind of information storage and retrieval system ---without permission in writing.