

Noise from fan motor

Topic number	LI83.10-P-077934
Version	1
Function group	83.10 - Ventilation
Date	6/5/24
Validity	X243 left-hand drive vehicle, X247 left-hand drive vehicle
Reason for change	

Complaint

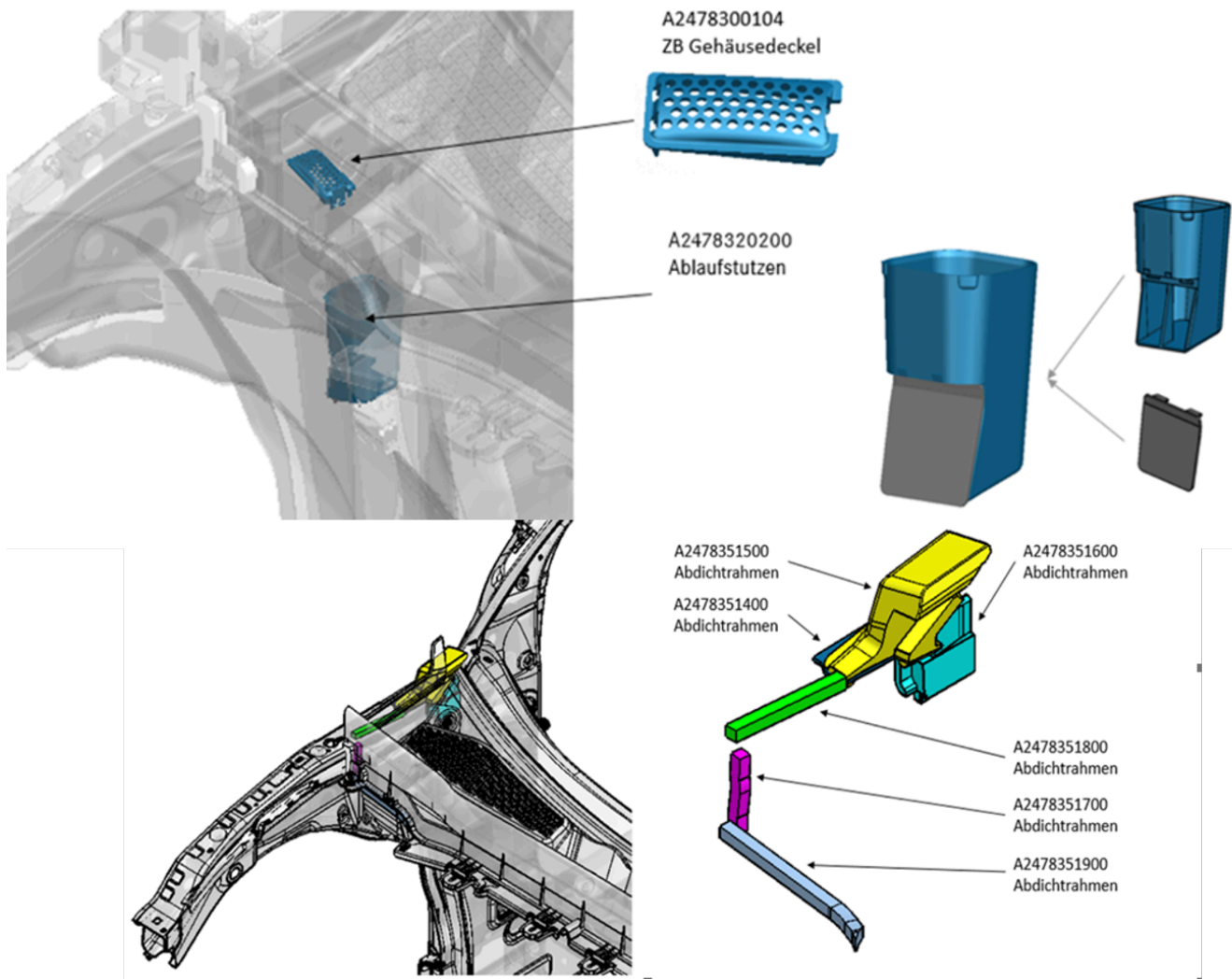
Noise can be heard coming from the air conditioning system at higher blower motor speeds.

Cause

Leaves/foreign objects have entered through the water drain grille in the water drain thereby causing an imbalance and noise in the blower wheel.

Remedy

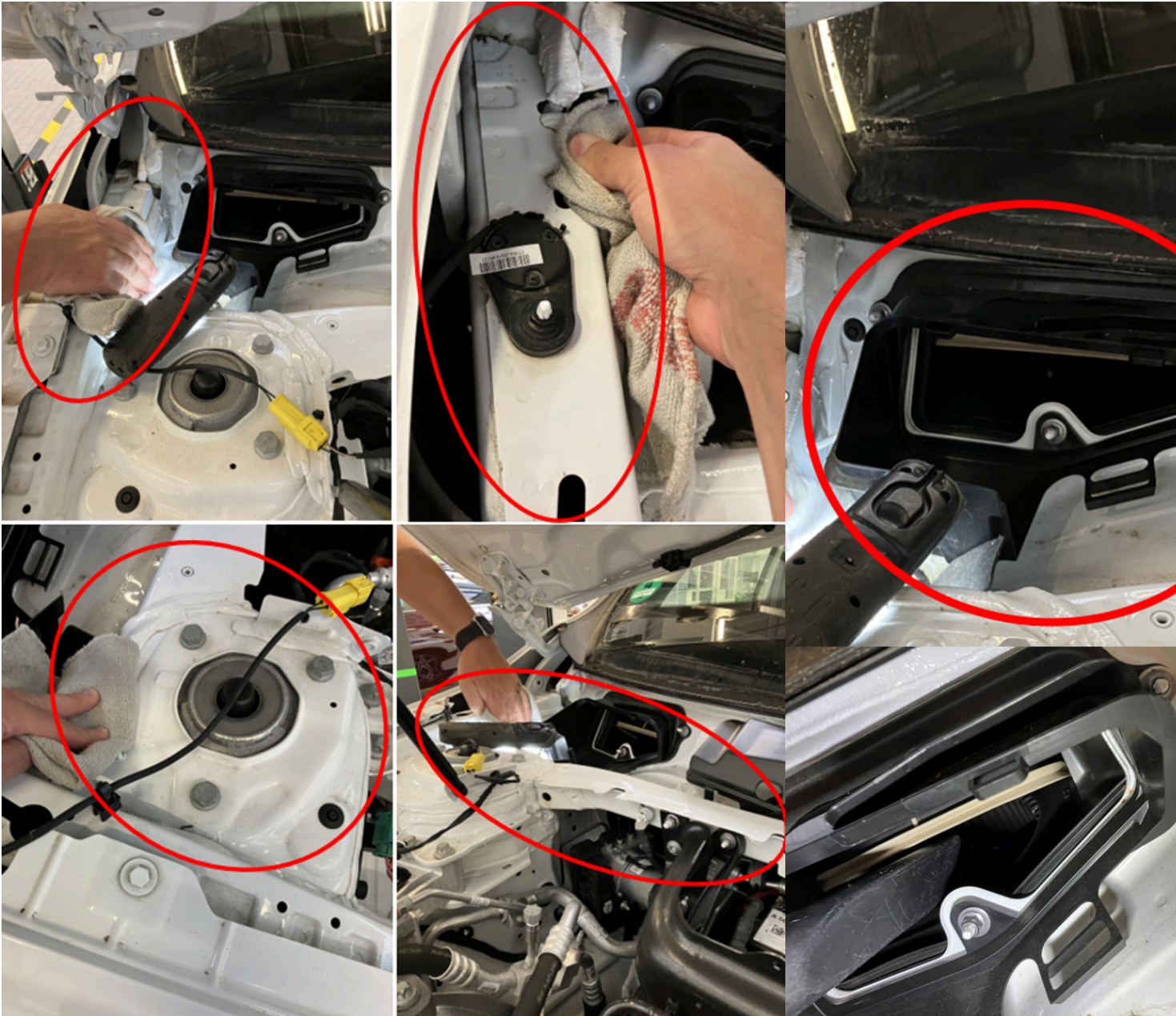
Instructions for the installation of Retrofit Kit TOP598-MFA2 Bermuda foam for model series X243/X247



- A2478351400 Sealing frame
- A2478351500 Sealing frame
- A2478351600 Sealing frame
- A2478351700 Sealing frame
- A2478351800 Sealing frame
- A2478351900 Sealing frame
- A2478300104 Housing cover
- A2478320200 Drainage fitting

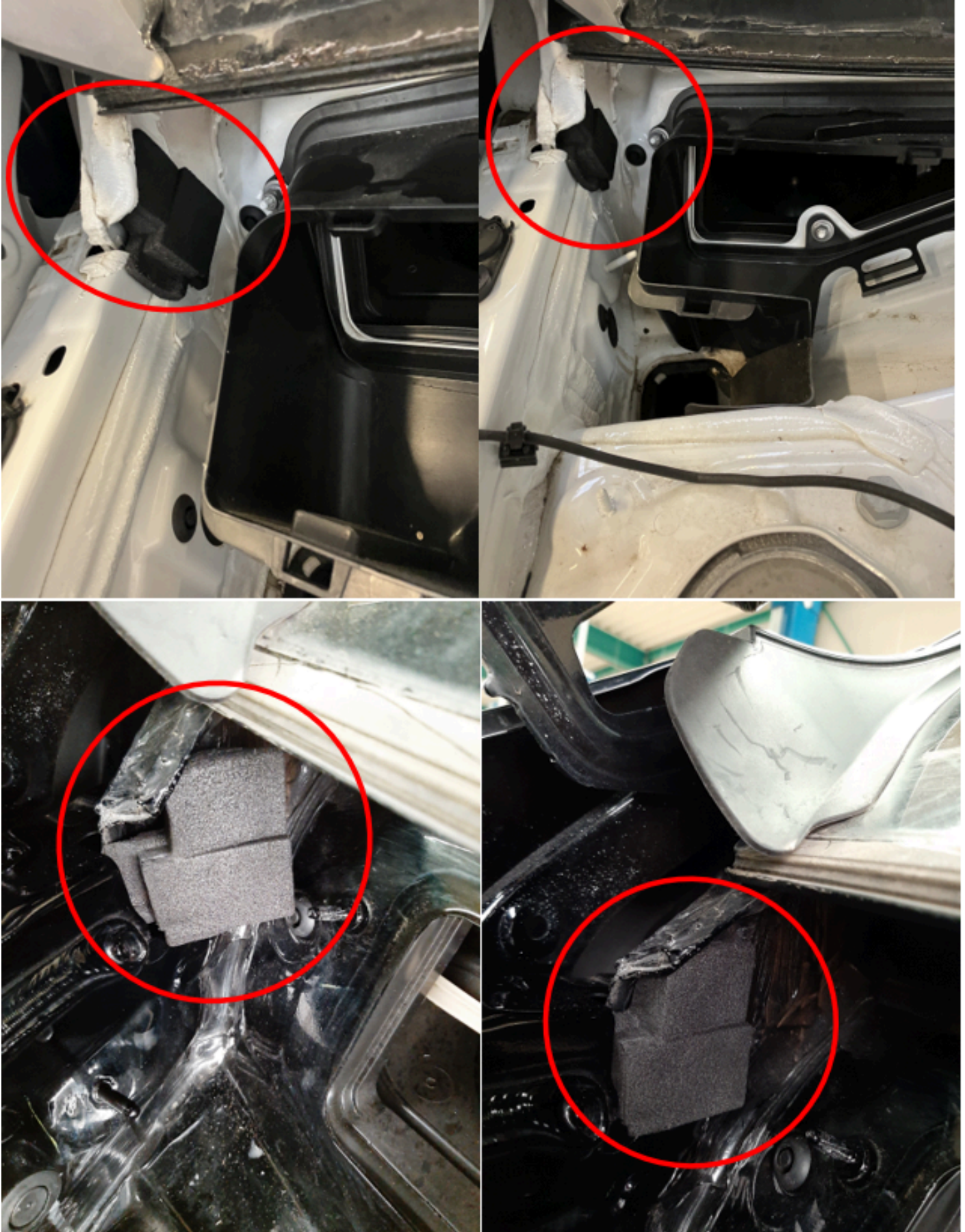
Steps:

- 1- Remove windshield wiper as per work instructions: AR82.30-P-6100MFA
 - 2- Remove water baffle cover as per work instructions: AR83.10-P-1411MFB
 - 3- Thoroughly clean body/body-in-white at marked positions and remove plastic cover to air inlet.
- Then extract air filter.



4- Attach body-in-white foam A2478351600 to cutout at body-in-white.

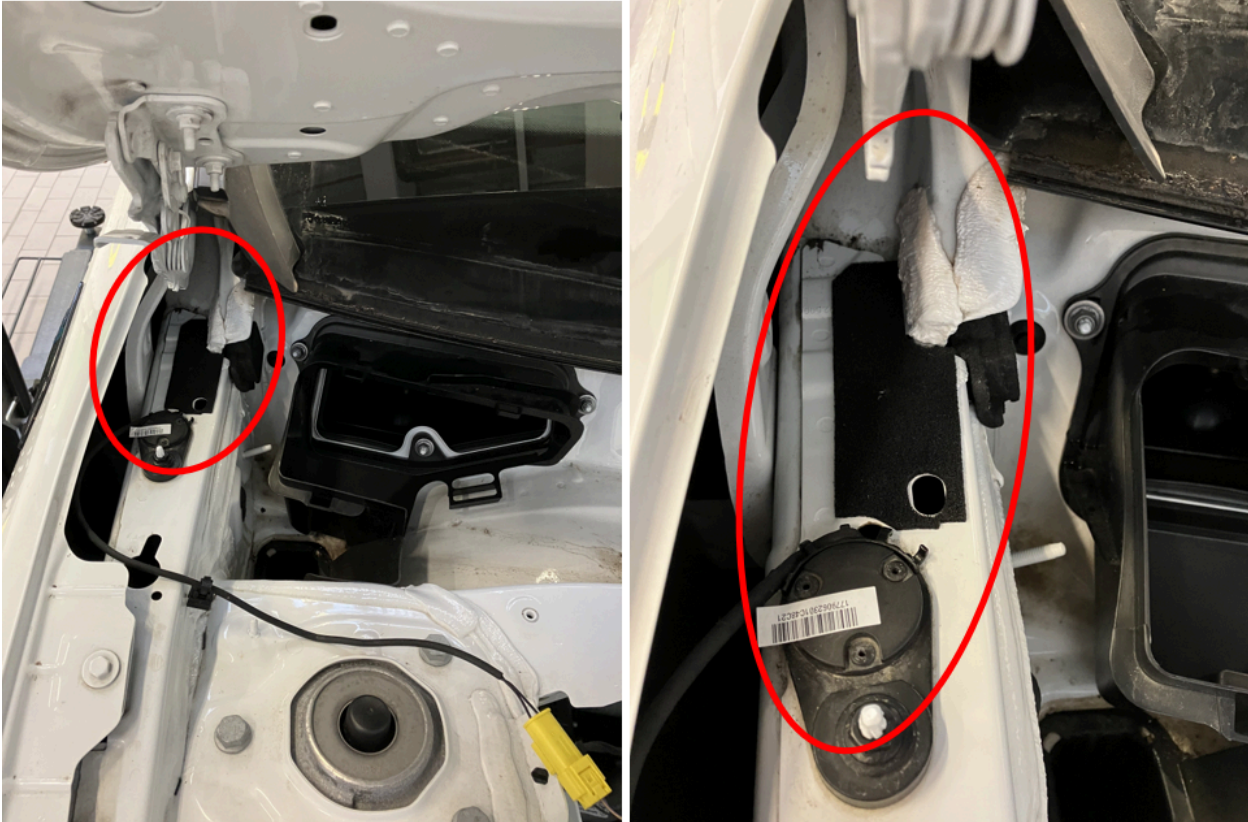
If necessary, fix part in place with light pressure.



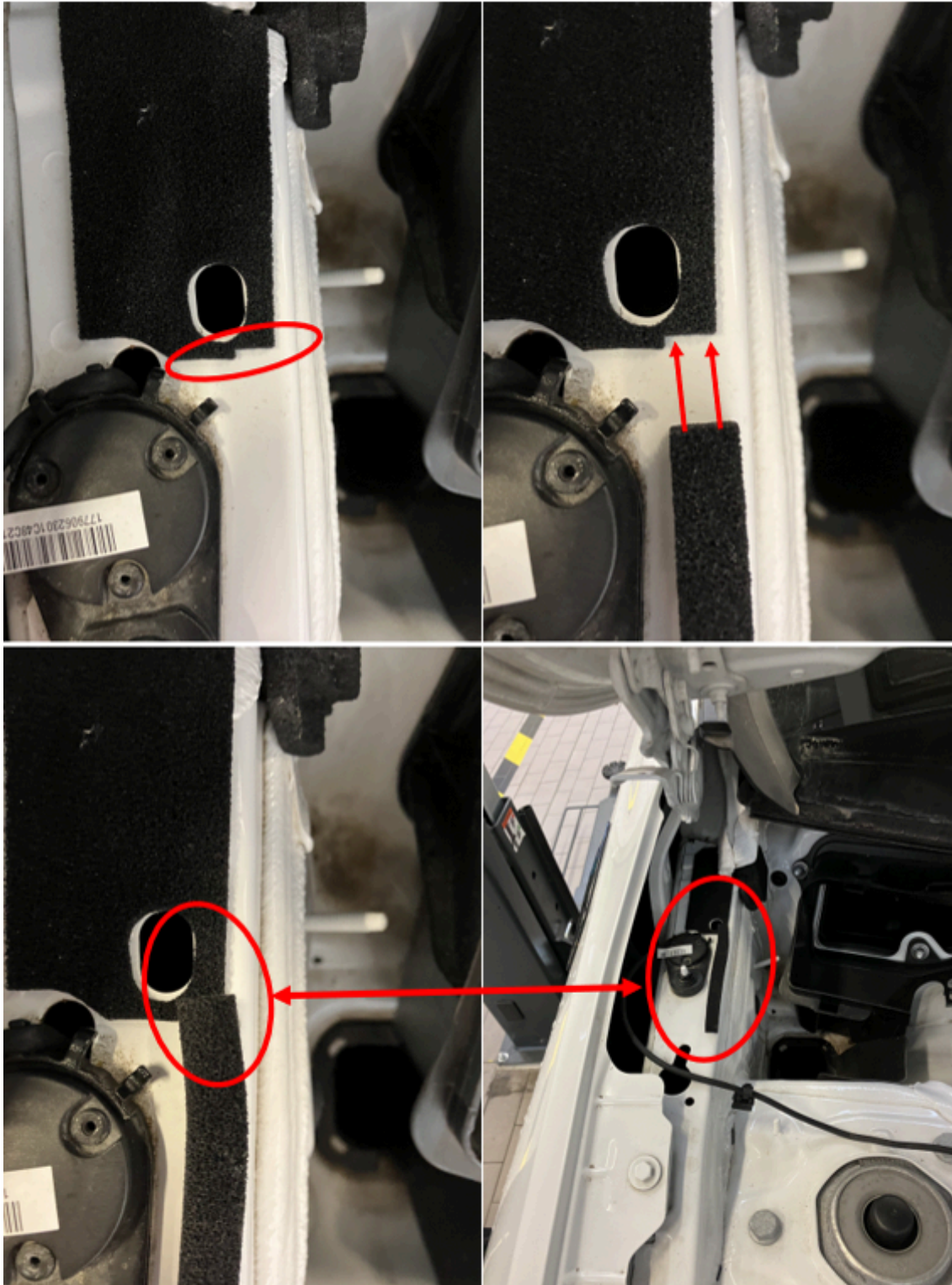
XENTRY Tips

5- Attach foam mat A2478351400 to previously cleaned part of body-in-white.

Ensure that hole of foam mat is over the hole in the body-in-white.



6- Attach sealing frame A2478351800 along edge as shown in picture. Ensure that the plastic strip is inserted flush with the offset in the previously attached foam mat.



7- Attach sealing frame A2478351700 as shown in the picture. Take care here as the strip should be attached flush to the foam strip

positioned lengthwise and must run vertically on the body-in-white downward in the direction of the seam.



8- Attach sealing frame A2478351900 as shown in the picture. Ensure that the foam strip must run along the seam and must be curved outward along the running direction at the end. (As a guide, the curvature should run so that there is a space of approx. 1 cm between the foam strip and the threaded hole). Alternatively, if the corresponding foam in the right picture is present, place the sealing frame A2478351900 along the foam as shown in the picture.



9- Insert drainage fitting A2478320200. When doing so, ensure that the foam flap is aligned in the direction of the fender as shown in

the picture and does not fold upward during insertion. Insert fitting with light pressure until it audibly engages.

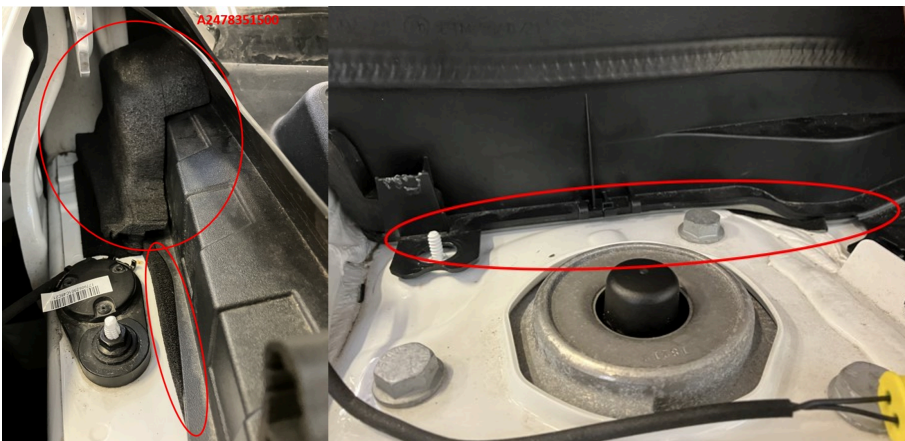


10- Attach sealing frame A2478351500 to water baffle as in the picture and insert inlet sieve A2478300104 (see picture).





11- Insert water baffle. When doing so, ensure that sealing frame A2478351600 does not fall out of position. Also ensure that the foam frames A2478351700, A2478351800 and A2478351900 run between the body-in-white and the water baffle (see picture).



12 - Clean out the water drains of any debris and ensure proper water flow away from the blower area.

13- Reinstallation of water baffle and windshield wiper (see step 1).

Attachments	
File	Description
Bild5.png	



Bild0.png

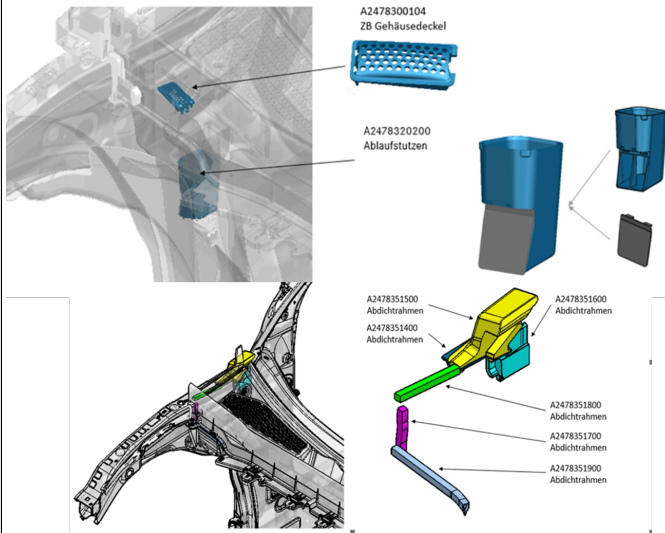


Bild4.png

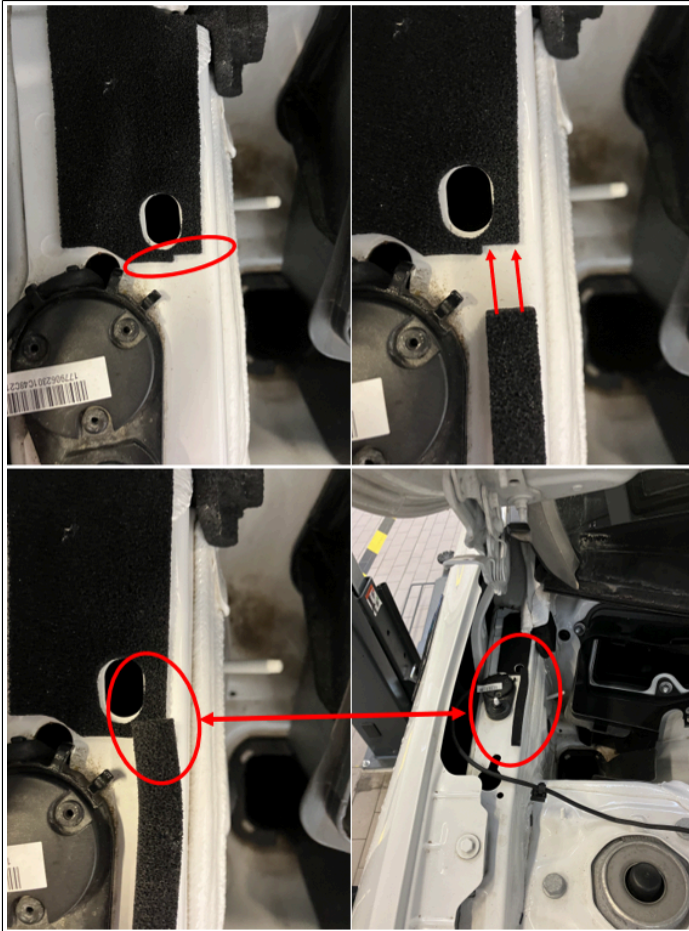


Bild3.png

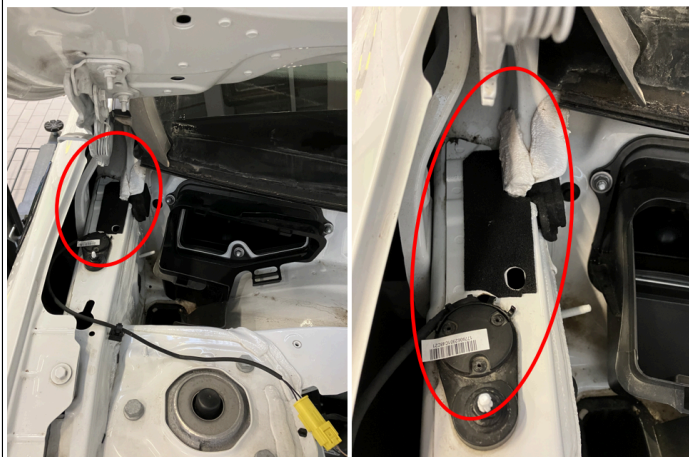


Bild2.png



Bild7.png



Bild10.png



Bild8.png



Bild9.png



Bild1.png



Bild6.png

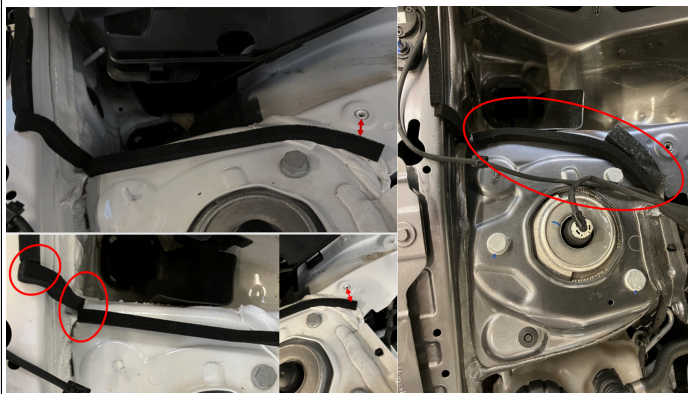
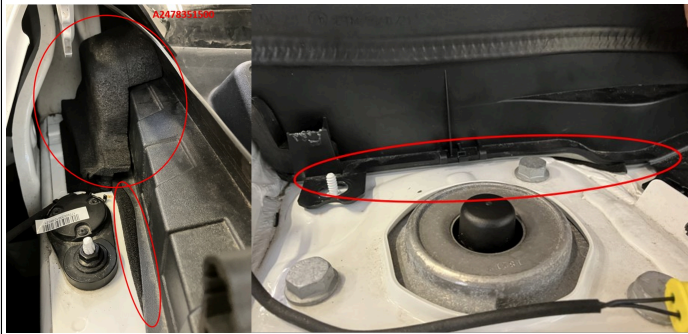


Bild11.png



Disclaimer

NOTE: The information contained in this document is intended for use by trained, professional technicians with the knowledge to properly and safely perform diagnosis and repairs on Mercedes-Benz vehicles, using Mercedes-Benz approved tools and equipment. It informs service technicians about conditions that could occur in certain vehicles and provides information that could assist in proper vehicle diagnosis, service, or repair. It does not indicate that a defect is present in any vehicle referenced in this document nor does it imply warranty coverage. DO NOT assume that a symptom or condition, or a described cause of a symptom or condition, affects any particular vehicle or groups of vehicles, or that a described repair applies to any particular vehicle or groups of vehicles. There can be multiple causes resulting in the same or similar symptoms or conditions described in this document, and trained professional service technicians must use their diagnostic skills to make evaluations on a case-by-case basis. The information contained in this document does not guarantee warranty coverage nor does it extend the vehicle's warranty in any way.

Symptoms

Body > Air conditioning > Air conditioning > Noise

Parts

Part number	ES1	ES2	Designation	Quantity	Note	EPC
A2478300104			Housing cover	1		X
A2478351400			Sealing frame	1		X
A2478351500			Sealing frame	1		X
A2478351600			Sealing frame	1		X
A2478351700			Sealing frame	1		X
A2478351800			Sealing frame	1		X
A2478351900			Sealing frame	1		X
A2478320200			Drainage fitting	1		X

Operation numbers/damage codes

Op. no.	Operation text	Time	Damage code	Note
			8322136	Blower motor noise