



Condition

ATTENTION:

THIS IS A TECH TIP, NOT A TECHNICAL BULLETIN.

TECH TIPS ARE NOT ASSOCIATED WITH WARRANTY CLAIMING.

Applicable Vehicles					
Model(s)	Year	Eng. Code	Trans. Code	VIN Range From	VIN Range To
Tiguan LWB	2018-2024	2.0T	All	All	All
Atlas Atlas Cross Sport	2018-2024	2.0T	All	All	All
Beetle Beetle Convertible	2018-2019	2.0T	All	All	All
Jetta GLI	2018-2024	2.0T	All	All	All
GTI	2018-2021	2.0T	All	All	All

Revision Table			
Instance Number	Published Date	Version Number	Reason For Update
2074252/1	06/13/2024	15-24-01TT	Original Publication

Technical Background

Remnants of the valve stem seal on the valve guide can interfere with the installation of new valve stem seals and cause them to not seat properly. See Figure 1 below for an example.

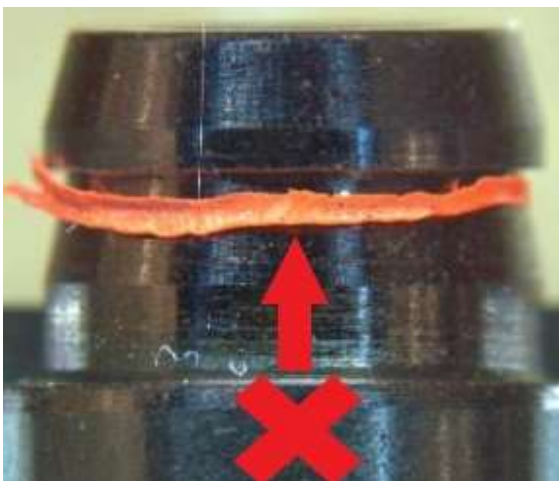


Figure 1.



15-24-01TT - Valve Stem Seal Installation

Release date: 6/13/2024

Service

When servicing or replacing the valve stem seals, check the valve guide for any signs of valve stem seal material under the valve guide groove, and if necessary, remove the remaining material before installing new valve stem seals. Care should be taken not to damage the valve guide, so use of a fine pick tool or small razor blade should be done so carefully.

Additional Information

© 2024 Volkswagen Group of America, Inc. All rights reserved. Information contained in this document is based on the latest information available at the time of printing and is subject to the copyright and other intellectual property rights of Volkswagen Group of America, Inc., its affiliated companies and its licensors. All rights are reserved to make changes at any time without notice. No part of this document may be reproduced, stored in a retrieval system, or transmitted in any form or by any means, electronic, mechanical, photocopying, recording, or otherwise, nor may these materials be modified or reposted to other sites, without the prior expressed written permission of the publisher.