

Battery Electric Vehicle (BEV) Post Programming Faults

Published 10 June 2024

Valid for Mack LRe and Volvo VNRe, model years 2021 to current

After module programming, faults may become active and require additional calibrations or programming.

Resolutions to Faults After Programming.

HPCU

When the HPCU is programmed, you can get the below active fault:

- a. U031B00 - DC/DC Converters, Hardware-Software Incompatibility
 - i. You then have to run routine 3223-22-03-01 Program DC/DC Control unit (DCU) to get the fault to go Inactive.

PCM

When the PCM is programmed, you can get the below active faults:

- a. P100B54 - Transmission Fork Position Sensor – Missing Calibration
 - i. You have to run Calibration routine 4314-07-03-01 Trans Fork Position Sensor Calibration to get fault to go inactive.
 - 1. When you do this then you get an active fault for HPCU P1021-54 Hybrid/EV drive motor “A”, speed sensor calibration
 - a. You have then run calibration routine 3241-05-03-01 Resolver Angle, Electric Motor to get the fault to go inactive.
- b. U031100 - Software Incompatibility with Hybrid/EV Subnet Node
 - i. You have to run routine 3241-05-03-02 Program Motor Control Unit (MCU) to get the fault to go inactive.

SDM

When you program the SDM you can get the below active faults:

- a. B100454 HVAC Control Panel Missing Calibration
 - i. You then have to run calibration routine 8719-07-03-01 HVAC Control Panel to get the fault to go inactive
- b. C101B54 Cooling Circuit Three Way Valve, Missing calibration
 - i. You have to run calibration routine 3690-07-03-01 Cooling circuit three-way valve to get fault to go inactive

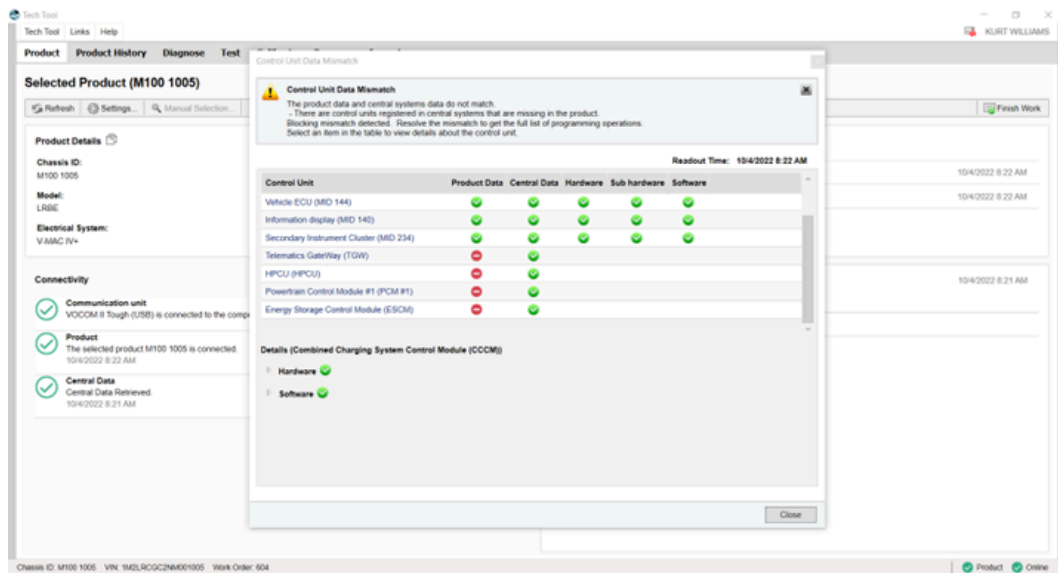
ESCM

When you program the ESCM you can get the below active faults:

- a.** U033A00 – Software Incompatibility with Hybrid/EV Battery Interface Control Module “A”
- b.** P2C8A87 – Hybrid/EV Battery Interface Control Module “A” – Missing Message
- c.** P2C8B87 - Hybrid/EV Battery Interface Control Module “B” – Missing Message
- d.** U357787 - Hybrid/EV Battery Interface Control Module “C” – Missing Message
- e.** U357887 - Hybrid/EV Battery Interface Control Module “D” – Missing Message
 - i.** This can all be correct by programming routine 3681-22-03-01 – Program Battery Management Unit (BMU)

We see a lot of data mismatches, and this has to do with the TEA2+ ECU's not reporting to the tool.

- a.** This can be corrected if hooking TT to the truck follows the below process:
 - i.** Turn truck ON and let everything power up
 - ii.** Start TT on PC, Login and get to home screen
 - iii.** Connect communication box to computer
 - iv.** Connect to truck
 - v.** TT should then identify product and mis-matches like shown below should not happen.
- b.** If there are still issue they may have to disconnect from product
 - i.** Clear the chassis from their recent selections and try again.



Related links and attachments

No links or attachments available



Share

to others that might find it helpful



Feedback

[Give feedback](#)

to help improve the content of this article