

Technical Service Bulletin (TSB) Motor Generator Unit (MGU) Replacement

REFERENCE:	TSB: 08-144-24 GROUP: 08 - Electrical	Date:	June 22, 2024	REVISION:	—
VEHICLES AFFECTED:	2023 - 2024 (JL) Jeep Wrangler 2023 - 2024 (WL) Jeep Grand Cherokee / Grand Cherokee L This bulletin applies to vehicles equipped with a 2.0L I4 DOHC DI Turbo PHEV Engine (Sales Code ECX).			MARKET APPLICABILITY:	
				<input checked="" type="checkbox"/> NA	<input type="checkbox"/> MEA
				<input type="checkbox"/> SA	<input type="checkbox"/> IAP
				<input type="checkbox"/> EE	<input type="checkbox"/> CH
CUSTOMER SYMPTOM:	Customers may experience a Malfunction Indicator Lamp (MIL) illumination. Upon further investigation the technician may find the following Diagnostic Trouble Code (DTC) has been set: <ul style="list-style-type: none"> • P1B0F-00 - Drive Motor A Position Sensor Offset Incorrect. Customers may experience one or more of the following: <ul style="list-style-type: none"> • Vehicle goes into limp home mode. • Vehicle does not start. 				
CAUSE:	Manufacturing issue				

REPAIR SUMMARY:

This bulletin involves inspecting the MGU serial number and possibly replacing the MGU as needed.

CLAIMS DATA:

Labor Operation No:	Labor Description	Skill Category	Labor Time
08-52-02-94	Motor Generator Unit (MGU) - Replace (JL) (3 - Highly Skilled)	1 - Engine Repair And Performance	2.0 Hrs.
08-52-02-95	Motor Generator Unit (MGU) - Replace (WL) (3 - Highly Skilled)	1 - Engine Repair And Performance	2.8 Hrs.
Failure Code	ZZ	Service Action	

SPARE PARTS:

Qty	Part No.	Description	Notes
1 (AR)	05190161AM	Motor, Electric	JL MGU
1 (AR)	05190309AF	Motor, Electric	WL MGU

DIAGNOSIS:

Using a Scan Tool (wiTECH) with the appropriate Diagnostic Procedures available in DealerCONNECT/ Service Library, verify all related systems are functioning as designed. If DTCs or symptom conditions, other than the ones listed above are present, record the issues on the repair order and repair as necessary before proceeding further with this bulletin.

If the customer describes the symptom/condition listed above, perform the Repair Procedure.

SPECIAL TOOLS/EQUIPMENT:

Description	Ref. No.	Notes
wiTECH or Equivalent	-	-

REPAIR PROCEDURE:

- Is DTC P1B0F-00 - Drive Motor A Position Sensor Offset Incorrect set?
 - YES>>> Proceed to [Step 2](#).
 - NO>>> This bulletin does not apply.
- Locate the MGU label [Fig.1](#).

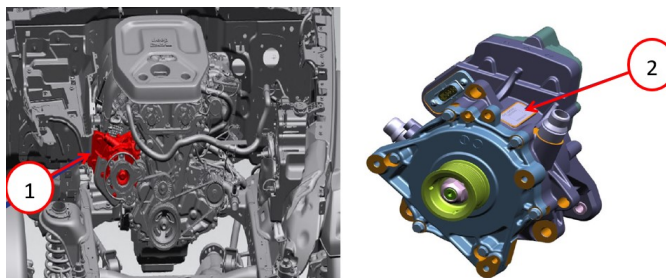


Fig. 1
MGU Location

1 - MGU Location
2 - MGU Label Location

- Read the serial number located on the MGU label [Fig. 2](#).

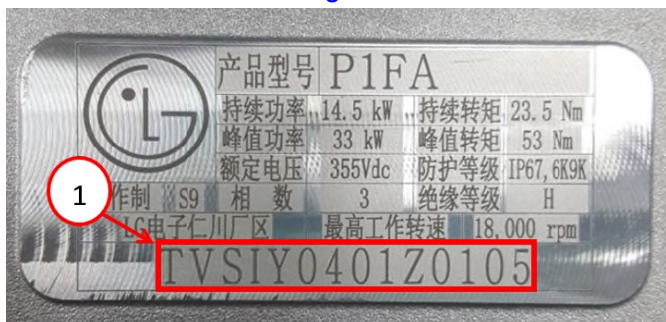


Fig. 2
MGU Serial Number

1 - MGU Serial Number

4. Is the serial number within the following ranges?

JL	TVSIY0813Z0241 - TVSIY2413Z0005
WL	TVSIY0903Z0714 - TVSIY2383Z0673

- YES>>> Replace the MGU. Refer to the detailed service procedures available in DealerCONNECT/ Service Library under: Service Info> 12 - Electrified Powertrain System / Electric Powertrain Control / Motors, Electric Drive / Removal and Installation.
- NO>>> This bulletin does not apply. Follow the DTC P1B0F-00 - Drive Motor A Position Sensor Offset Incorrect diagnostic procedure in Service Library.

5. Clear DTCs.

6. Does DTC P1B0F-00 - Drive Motor A Position Sensor Offset Incorrect return after MGU replacement?

- YES>>> Normal diagnosis should be performed.
- NO>>> This bulletin is completed.

POLICY:

Reimbursable within the provisions of the warranty.

<p><i>This bulletin is supplied as technical information only and is not an authorization for repair. No part of this publication may be reproduced, stored in a retrieval system, or transmitted, in any form or by any means, electronic, mechanical, photocopying, or otherwise, without written permission of FCA US LLC.</i></p>
