

**Subject:** Engineering Information - Check Engine Lamp Illuminated on Driver Information Center (DIC), DTC's P0202, P0203 Set

**Attention:** Proceed with this EI ONLY if the customer has commented about this concern AND the PIE number is listed in the Global Warranty Management / Investigate History link (GWM/IVH). If the customer has not commented about this condition or the EI does not show in GWM/IVH, disregard the PIE, and proceed with diagnostics found in published service information. THIS IS NOT A RECALL refer to Service Bulletin 04-00-89-053 for more details on the use of Engineering Information bulletins.

*This EI have been revised to update Step 11 and added Email Address. Please discard PIE0791.*

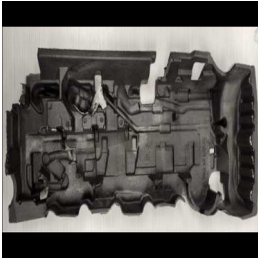
Brand:	Model:	Model Year:		Breakpoint:		Engine:	Transmission:
		from	to	from	to		
Cadillac	Escalade Models	2023	2024	—	—	Equipped with 3.0L (RPO LM2)	—
Chevrolet	Silverado 1500	2023	2024	—	—	Equipped with 3.0L (RPO LZ0)	—
	Suburban					Equipped with 3.0L (RPO LM2)	
	Tahoe					Equipped with 3.0L (RPO LM2)	
GMC	Sierra 1500	2023	2024	—	—	Equipped with 3.0L (RPO LZ0)	—
	Yukon Models					Equipped with 3.0L (RPO LM2)	

<b>Involved Region or Country</b>	<b>U.S. Dealers ONLY</b>
<b>Condition</b>	<p>Some customers may comment on the Check Engine Lamp illuminated on the Driver Information Center (DIC).</p> <p>Technicians may find one or both DTC's set.</p> <ul style="list-style-type: none"> <li>• P0202 - Cylinder 2 Fuel Injector Control Circuit</li> <li>• P0203 - Cylinder 3 Fuel Injector Control Circuit</li> </ul>
<b>Cause</b>	<p>GM Engineering is attempting to determine the root cause of the above condition. Engineering has a need to gather information on vehicles PRIOR to repair that may exhibit this condition. As a result, this information will be used to "root cause" the customer's concern and develop/validate a field fix.</p>

## Correction

**Important:** Service agents must comply with all International, Federal, State, Provincial, and/or Local laws applicable to the activities it performs under this bulletin, including but not limited to handling, deploying, preparing, classifying, packaging, marking, labeling, and shipping dangerous goods. In the event of a conflict between the procedures set forth in this bulletin and the laws that apply to your dealership, you must follow those applicable laws.

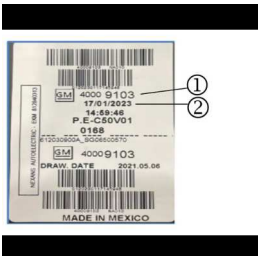
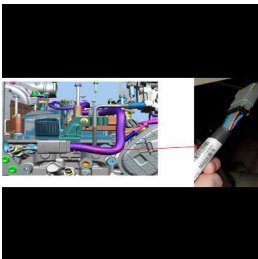
If you encounter a vehicle with the above concern, the vehicle will require the Fuel Injector Wire Harness and the effected High Pressure Fuel Injectors to be replaced and perform all the steps list below **BEFORE** contacting the engineer.



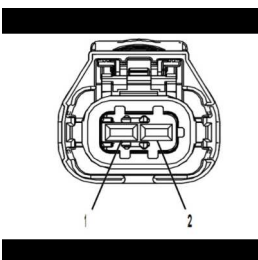
1. Remove and inspect the cam shaft housing cover insulator and take a clear picture of the underside of the insulator, as shown in the picture above, and document where any possible contact between the insulator and the wire harness may have occurred.



2. Prior to removing the wire harness, take a clear picture of the wire harness on the engine, as shown in the picture above, and document any possible contact between the insulator and the wire harness.



3. Document the harness P/N# (1) and the Build Date and Shift (2), as shown in the pictures above.



4. Inspect the high pressure diesel fuel injector connector for evidence any issues and document.
5. Inspect the wires near the X160 connector for damage and/or signs of chafing on the ECM side of the connector.
6. Perform a terminal drag test at the fuel injector connector and document the results.
7. Perform a terminal drag test at the X160 connector for the effected circuit and document the results.
8. Perform a terminal drag test at the ECM for the effected circuit and document the results.
9. Measure the resistance: Control Circuit — Voltage Control @ Control module harness & X160 connector and document the results.
10. Measure the resistance: Control Circuit — Voltage Supply @ Control module harness & X160 connector and document the results.
11. Contact the engineer with your findings and send the pictures by email.

## Contact Information

The Contact Information has been redacted.

Please include the following information if leaving a message:

- Technician name
- Dealer name and phone number
- Complete VIN and repair order (R.O) number

On the repair order, document the date and time the call was placed (even if the engineer was not reached).

If engineering is unable to return the call within one hour, proceed with diagnosis and repair based on information found in SI.

## Warranty Information

If an engineer was contacted or required information was provided, use:

Labor Operation	Description	Labor Time
4088048*	Engineering Information - Check Engine Lamp Illuminated on (DIC), DTC's P0202, P0203 Set	0.6 Hrs.

\*This is a unique Labor Operation for bulletin use only.

<b>Version</b>	2
<b>Modified</b>	Released May 30, 2024 Revised June 05, 2024 - Revised to update Step 11 and added Email Address.