



# Technical Service Bulletin

---

## 66 Exterior black optic trim peeling / spotted

66 24 07 2074058/1 May 28, 2024.

Model(s)	Year	VIN Range	Vehicle-Specific Equipment
A3, S3, and RS 3	2022 - 2025	All	Black optic trim
Q4 e-tron, Q4 Sportback e-tron, e-tron GT, and RS e-tron GT	2022 - 2024		

## Condition

### Customer states:

The finish on the black optic exterior trim is peeling or spotted.



*Figure 1. Typical spotting on black optic trim.*

### Workshop findings:

Various degrees of damage to the trim finish are confirmed.

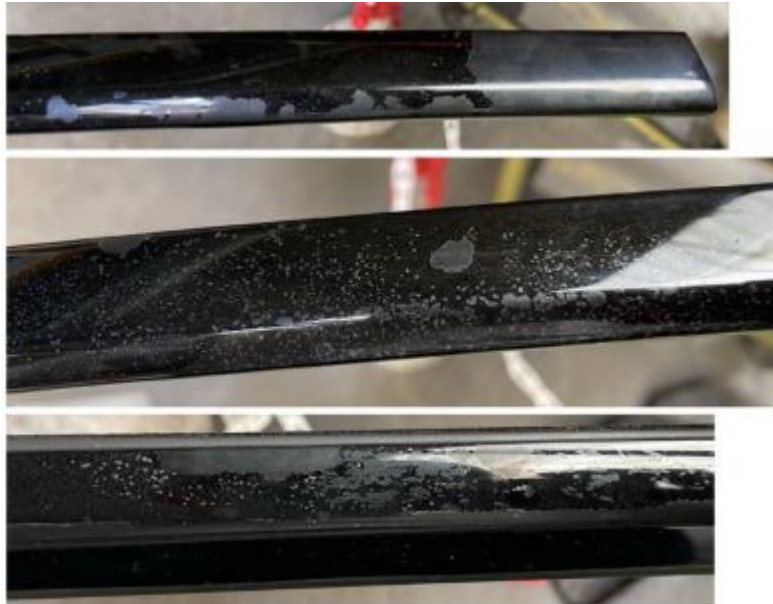
## Technical Background



# Technical Service Bulletin

---

1. Figure 2 shows varying degrees of peeling finish.



**Figure 2.** Black optic trim peeling.

2. Figure 3 shows the black optic door trim with a peeling condition.



**Figure 3.** Black optic door trim peeling.



# Technical Service Bulletin

---

3. Figure 4 shows finish delamination in a droplet pattern.



**Figure 4.** Droplet patterned finish adhesion failure.

4. The droplet pattern is indicative of the trim having been sprayed with a caustic cleaner. The cleaner has compromised the finish and the droplets are also found on the adjacent rubber strip.



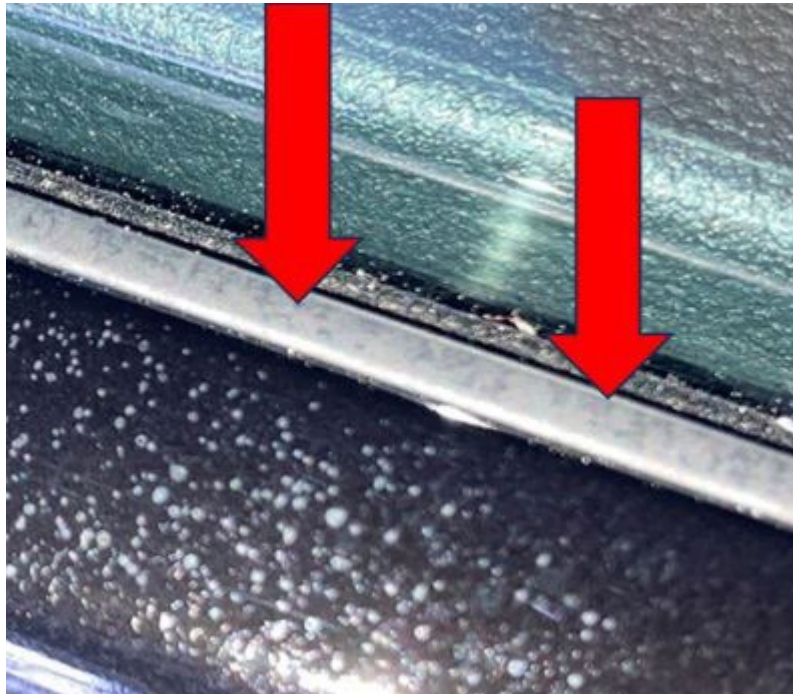
**Figure 5.** Droplet pattern migration to adjacent rubber strip.



# Technical Service Bulletin

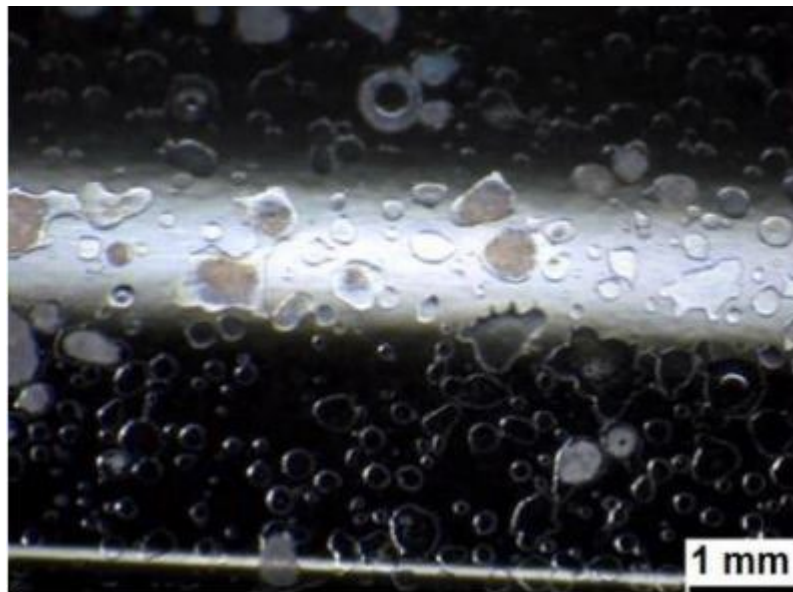
---

5. Various rubber components adjacent to the damaged black optic trim show the droplet pattern as well.



**Figure 6.** Droplet pattern migration to adjacent rubber components.

6. Figure 7 shows the delamination blisters under magnification.



**Figure 7.** Magnified view of blistering that results from contact with caustic cleaners.

7. After laboratory analysis traces of Fluorine and Phosphorus were detected on the analyzed trim components. These elements are not present in the manufacturing process of the trim components in production. These elements are commonly found in more aggressive cleaning agents. As a result, the root cause of the damage to the trim described in this TSB is due to contact with aggressive cleaning



# Technical Service Bulletin

---

agents. These cleaning materials include but are not limited to insect removers or wheel cleaners. These materials attack the black optic finish and cause delamination. Additionally, the use of high-pressure washers accelerates the extent to which the trim finish is damaged. The damage is irreversible and cannot be repaired.

## Production Solution

Not applicable.

## Service

The affected trim will need to be replaced in these cases however, due to the nature of the root cause of the failure of the trim finish having been determined as chemical contamination, trim replacement under warranty is prohibited.

## Warranty

This damage is due to outside influence and is not covered by any Audi Warranty.

## Additional Information

All part and service references provided in this TSB (**2074058**) are subject to change and/or removal. Always check with your Parts Department and/or ETKA for the latest information and parts bulletins. Please check the Repair Manual for fasteners, bolts, nuts, and screws that require replacement during the repair.

©2024 Audi of America, Inc. All rights reserved. The information contained in this document is based on the latest information available at the time of printing and is subject to the copyright and other intellectual property rights of Audi of America, Inc., its affiliated companies, and its licensors. All rights are reserved to make changes at any time without notice. No part of this document may be reproduced, stored in a retrieval system, or transmitted in any form or by any means, electronic, mechanical, photocopying, recording, or otherwise, nor may these materials be modified or reposted to other sites without the prior expressed written permission of the publisher.