



# Service Information

Offboard Diagnostic Information System Service (ODIS Service)

Number: VOS-24-73

Subject: DA 0001 ECM – Certification Test Group (CTG) Label  
(Atlas) Hotfix Instructions

Date: May 29, 2024

Supersedes VOS-24-67 due to updated diagnostic content to 2.50.3

**Important:**

**We recommend installation of this hotfix on one diagnostic device ONLY. Hotfix must be removed immediately after performing the procedure.**

## 1.0 – Introduction

The hotfix is for the **Atlas** DA 0001 ECM - Certification Test Group (CTG) label

P0F4800: Certification test group/engine family number Not programmed or incompatible


**!! The Hotfix must be removed after performing the diagnostic procedure. !!**

## 2.0 – Prerequisite

ODIS Service Diagnostic Content version **2.50.3** must be installed.

To confirm the installed diagnostic content version in ODIS Service, go to: **Info > Versions.** 

Verify Diagnostic Content version:


  
didb\_GFS-v.en\_US: 2024.06.00 / 2.50.3



# Service Information

---

## 3.0 – Download Hotfix

1. Open a **Web Browser** on the diagnostic device and logon to **vwhub.com**
2. Navigate to **Elsa2Go>Service References>Software/Hardware Updates**
3. Search for **VOS-24-73 Atlas DA 0001 ECM Hotfix Zip File**
4. Click the **VOS-24-73 Atlas DA 0001 ECM Hotfix Zip File**  and **save** it to your Windows desktop.
5. Close your browser.

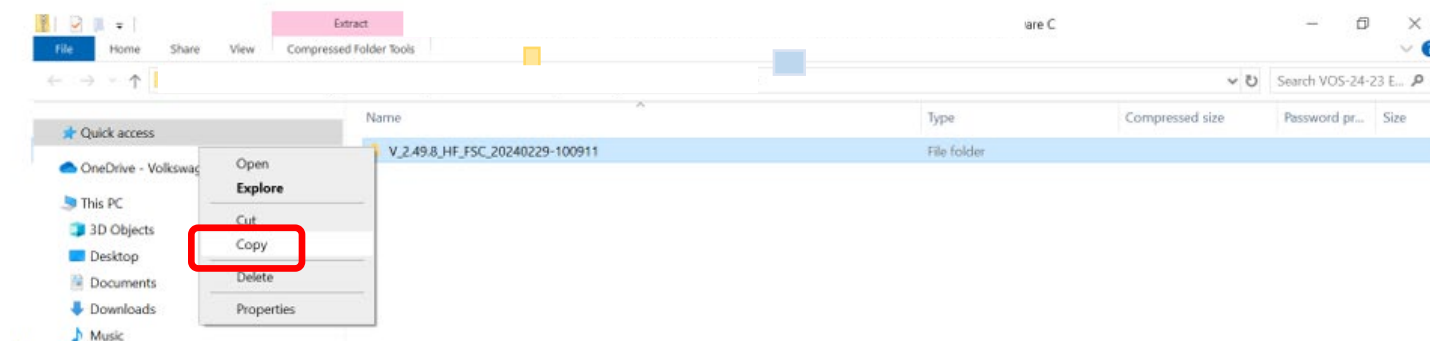
(continued)



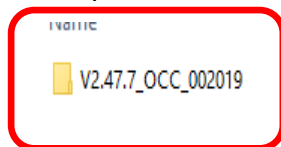
# Service Information

6. Browse to the desktop and double-click the **VOS-24-73 Atlas DA 0001 ECM Hotfix Zip File** to open it.

7. Right click the file (example only) name and select **Copy**:



8. Right click anywhere on the Windows desktop and select **Paste**. This file icon (example) must appear on the desktop:



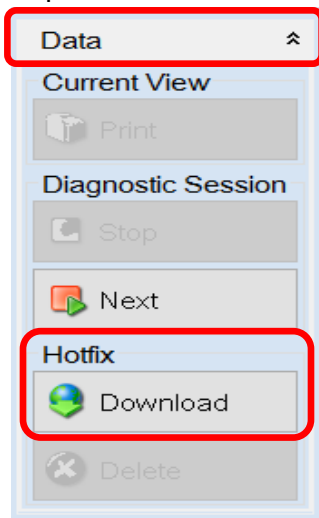
*(continued)*



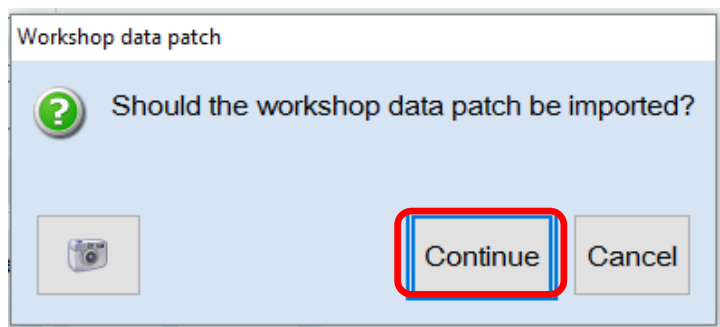
# Service Information

## 4.0 – Install Hotfix into ODIS Service

1. Open ODIS Service (“Run as Administrator”)
2. Expand the **Data** submenu and click **Download** (under **Hotfix**):



3. Click **Continue**:

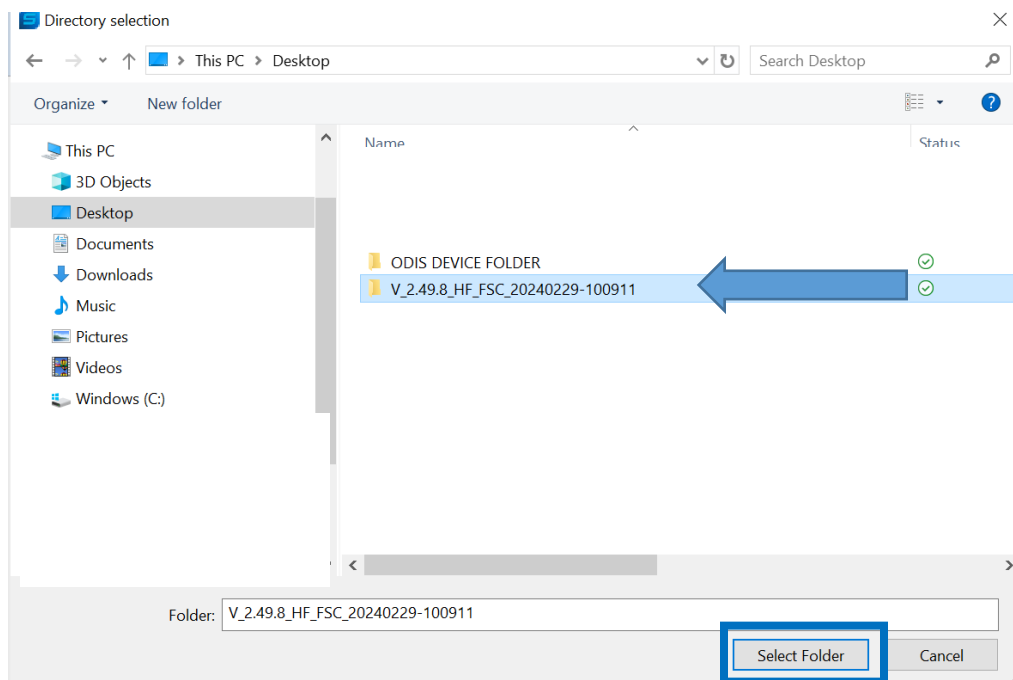


*(continued)*

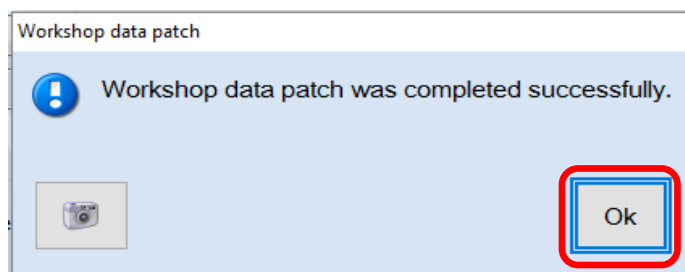


# Service Information

- The Directory selection window will appear. Browse to and **highlight the Hotfix file** (*example only*), then click **Select Folder**:



- Click **OK**:



- Perform the diagnostic procedure.

## ***Important:***

***The Hotfix must be removed after performing the procedure. Failure to do so will cause other vehicle diagnostics sessions to malfunction.***

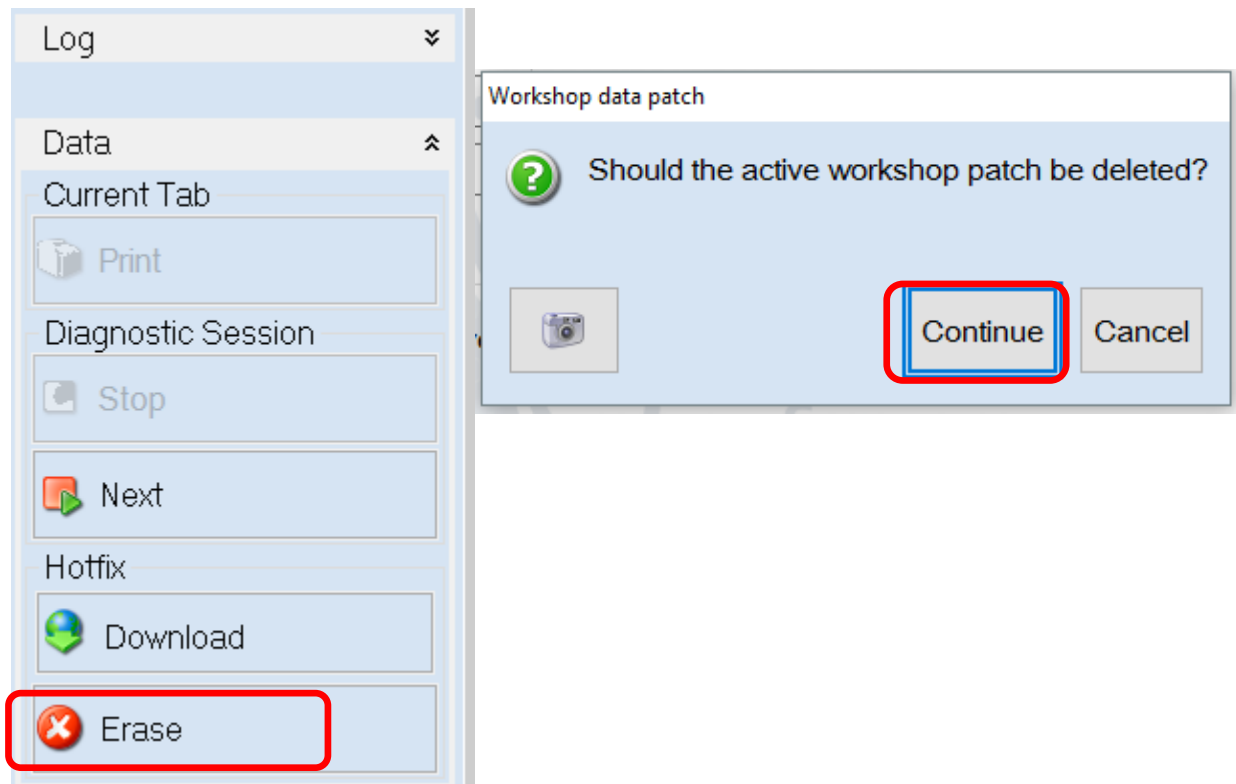
(continued)



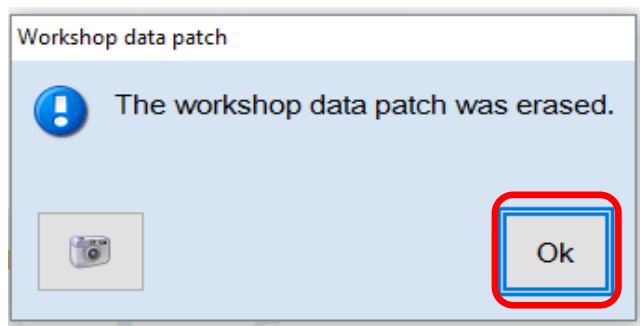
# Service Information

## 5.0 – Uninstall the Hotfix from ODIS Service

1. Select **Erase** (under Hotfix), then **Continue**:



2. Click **OK** and close ODIS Service:



**Please contact Diagnostic Tester Software Support by phone at 888-896-1298 or email [softwaresupport@vw.com](mailto:softwaresupport@vw.com) with any questions or concerns.**