



# Service Bulletin

Bulletin No.: 23-NA-064

Date: May, 2024

## INFORMATION

**Subject:** Information on Transportation / Logistics Mode

Brand:	Model:	Model Year:		Breakpoint:		Engine:	Transmission:
		from	to	from	to		
BrightDrop	Passenger Cars and Light/Medium Duty Trucks	2020	2024	—	—	All	All
Buick							
Cadillac							
Chevrolet							
GMC							

<b>Involved Region or Country</b>	North America, Argentina, Brazil, Bolivia, Chile, Colombia, Ecuador, Paraguay, Peru, Uruguay, Venezuela, Europe, Uzbekistan, Russia, Middle East, Iraq, Israel, Palestine, Japan, Cadillac Korea (South Korea), GM Korea Company, China, Taiwan, Thailand, Singapore, Philippines, Australia/New Zealand, Egypt, Other Africa, South Africa
-----------------------------------	---

### Summary

**Important:** This technical service bulletin (TSB) can only be completed by certified repair facilities who have met all specific training, tool and equipment requirements pertaining to the vehicle Brand and Model serviced. Repairs must be performed by a technician who has successfully completed the required training.

**Important: Service agents must comply with all International, Federal, State, Provincial, and/or Local laws applicable to the activities it performs under this bulletin, including but not limited to handling, deploying, preparing, classifying, packaging, marking, labeling, and shipping dangerous goods. In the event of a conflict between the procedures set forth in this bulletin and the laws that apply to your dealership, you must follow those applicable laws.**

Transport Mode Feature, also known as Logistics mode, is used to increase the 12V Battery stand time of the vehicle during transit and or long period of stand time at the dealerships. It is used to put modules on the vehicle into a low power mode, reducing the electrical parasitic load on the battery when the vehicle is standing for long period of time. In this mode, stand time can be extended up to 70 days by reducing vehicle drain down to as low as 10 mA depending on vehicle and content.

**Important:** Vehicles that are shipped from the assembly plant with Transport Mode On, turning the

feature Off into Customer Mode is included in the normal PDI process time. No additional warranty claims should be submitted to disable or enable this feature. The modules that participate in Transport Mode are the Body Control Module (BCM), Radio, Front Camera Module, Running Boards, Onstar, HVAC, Rear Wheel Steering Control Module and more to come in the future. The major contributor to transport mode is the BCM; it shortens the Retained Accessory Power (RAP) time down to 1 minute, disables Approach Detection, eye catching lighting features, comfort features like heated seats and steering wheel, etc.

Some other features that are disabled in Transport mode if equipped are:

- HVAC and Radio features (Ignition Off)
- Passive and remote keyless entry
- Perimeter lighting
- Automatic running boards
- Liftgate or tailgate
- eTrunk (if equipped)
- Active safety features
- Charging above approximately 30% (program specific value)

## Transport Mode Procedure



6308497

To alert the driver that Transport Mode On is enabled, the red battery Tell Tale light will be flashing and if equipped with a Driver Information Center (DIC), it will display a Transport Mode On message as shown in the picture above.

**Important:** Logistics mode should be left ON while the vehicle is in dealer inventory. Transport Mode can be enabled with the scan tool or manually on-vehicle. The method to turn the mode Off is the same to turn the mode On.

### Enabling Transport Mode:

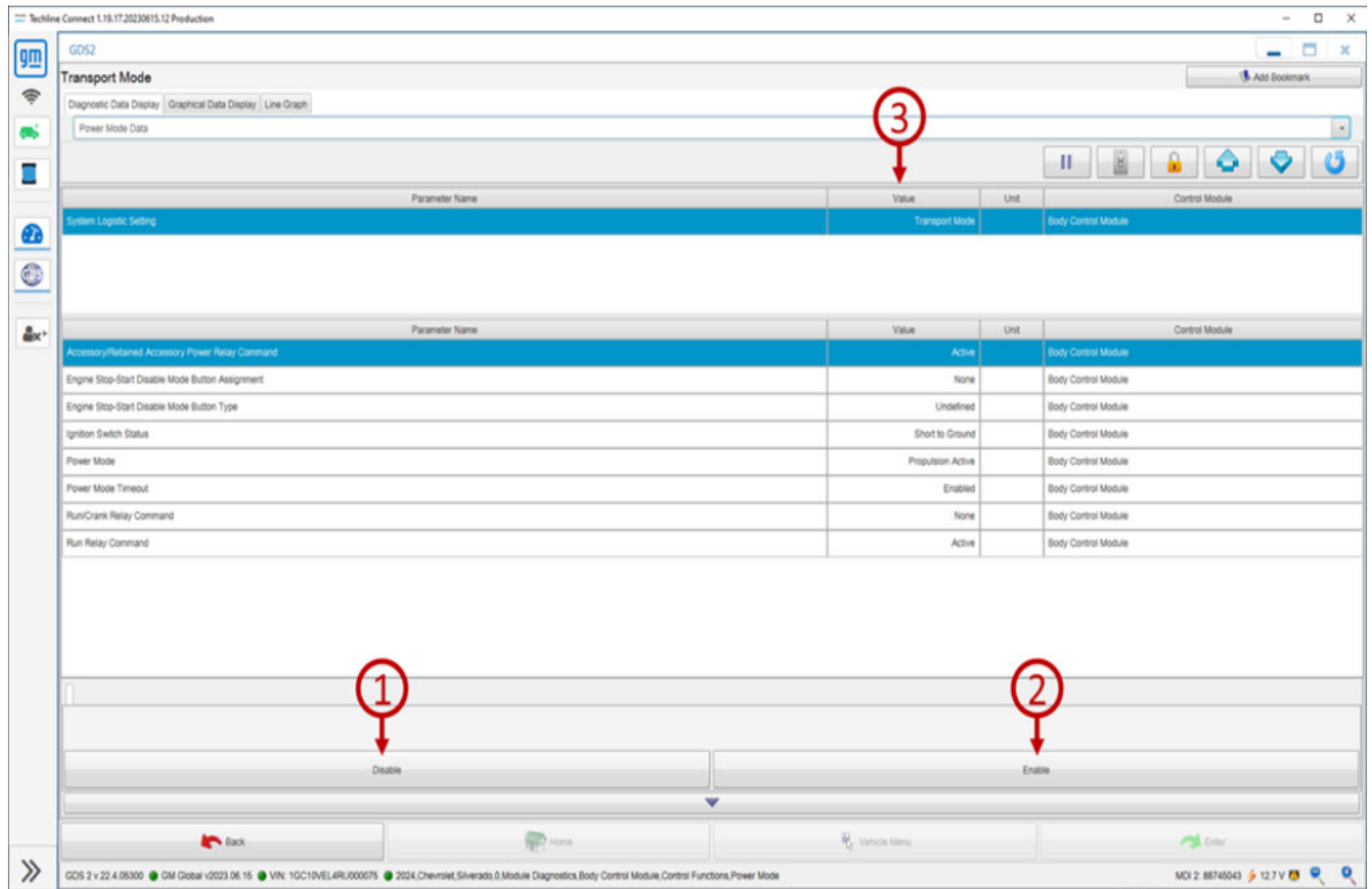
1. Start the vehicle.
2. Press the brake pedal.
3. Activate the hazard flashers.
4. Then press and hold the ignition mode switch for more than 15 seconds.
5. Transport Mode On message will display on the DIC, if equipped and the Battery Warning light will flash.

6. Repeat steps 1 through 4 to disable into Customer Mode.

**Important:** Refer to Service Information for the transport mode procedure as certain vehicles could vary.

### Enabling/Disabling Transport Mode on EVs with Passive Power Mode (Blazer EV and Silverado EV WT):

1. Connect the scan tool to the vehicle.
2. Launch Techline Connect and open GDS2.
3. GDS2 Path: *Module Diagnostics/Body Control Module/Power Mode/Transport Mode*
4. Select the appropriate button at the bottom of the screen:



6379540

Disable to turn Transport Mode OFF (1), Enable to turn Transport Mode ON (2) and the parameter

Value indicates the vehicle current mode (3), as shown in the picture above.

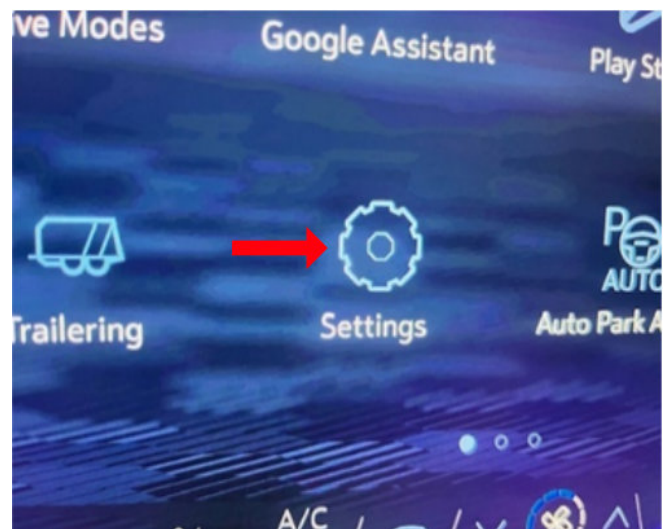


6379797

5. When Transport Mode is enabled, a message will display on the DIC (1), and the Battery Warning light (2), as shown in the photo above will flash.
6. Repeat steps 1 through 4 and select Disable to enter Customer Mode.

**Enabling/Disabling Transport Mode on EVs with Passive Power Mode (Equinox EV / Silverado EV RST / Sierra EV):**

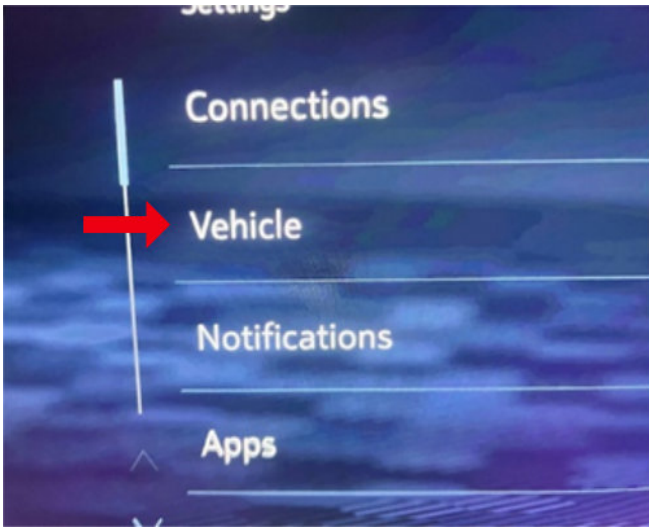
1. Place vehicle into START/PROPULSION mode.



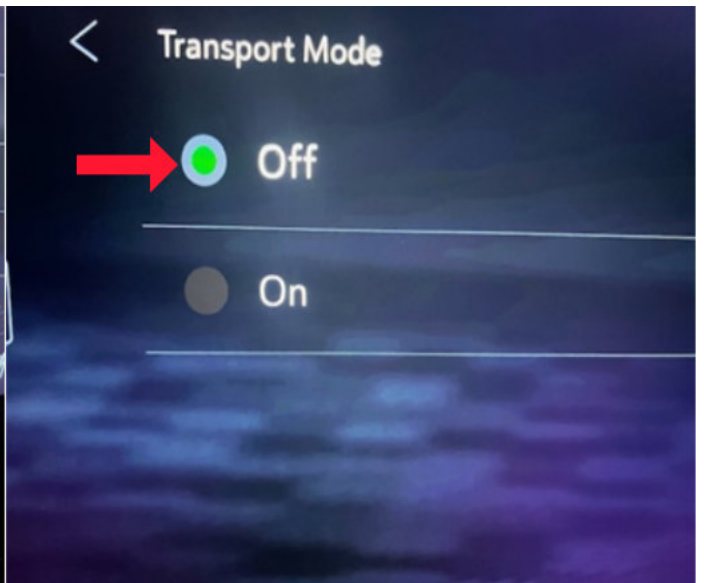
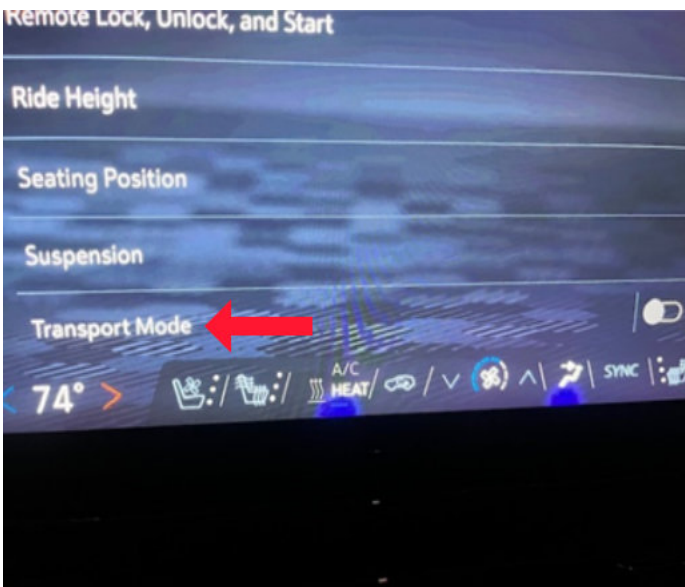
6614624

2. In the radio display, find and select the "Settings" app.

3. Select "Vehicle" from the drop-down list.



6614628



6614630

4. Scroll down to the "Transport Mode" selection and enable/disable as required.

5. The desired Transport mode selection will be applied on the next key cycle.



6614635

- When Transport Mode is enabled, a message will display on the DIC (1), and the Battery Warning light (2), as shown in the photo above will flash.

<b>Version</b>	5
<b>Modified</b>	<p>Released April 03, 2023</p> <p>Revised June 30, 2023 – Added Enabling/Disabling Transport Mode on EVs with Passive Power Mode section.</p> <p>Revised April 16, 2024 – Added two bulleted items under Summary, updated title to Enabling/Disabling Transport Mode on EVs with Passive Power Mode (Blazer EV and Silverado EV WT) and added Enabling/Disabling Transport Mode on EVs with Passive Power Mode (Silverado EV RST / Sierra EV) section.</p> <p>Revised April 29, 2024 – Added BrightDrop Models.</p> <p>Revised May 16, 2024 – Added Equinox EV to Enabling/Disabling Transport Mode on EVs with Passive Power Mode.</p>

