

Technical Service Bulletin (TSB)
Crank Gear Flange Dislocation

REFERENCE:	TSB: 09-014-24 GROUP: 09 - Engine	Date:	May 18, 2024	REVISION:	-
VEHICLES AFFECTED:	2023 - 2024 (H6) Jeep Meridian 2023 - 2024 (M6) Jeep Compass This bulletin applies to the following vehicles built on or after February 02, 2023 (MDH 0202XX) on or before February 24, 2024 (MDH 0224XX) equipped with a 2.0L I4 Turbo Diesel Engine With/ESS (Sales Code EBS) .	MARKET APPLICABILITY:			
		<input type="checkbox"/> NA <input type="checkbox"/> MEA <input type="checkbox"/> SA <input checked="" type="checkbox"/> IAP <input type="checkbox"/> EE <input type="checkbox"/> CH			
CUSTOMER SYMPTOM:	Customers may experience one or more of the following: <ul style="list-style-type: none"> • Vehicle does not start due to crank gear flanged dislocated. • Abnormal noise from the engine compartment. • Noise from the timing cover area. 				
CAUSE:	Manufacturing issue				

This Technical Service Bulletin (TSB) has also been released as a Rapid Service Update (RSU) 24-090, date of issue May 18, 2024. All applicable RSU VINs have been loaded. To verify this RSU service action is applicable to the vehicle, use VIP or perform a VIN search in DealerCONNECT/Service Library. All repairs are reimbursable within the provisions of warranty.

REPAIR SUMMARY:

This bulletin involves inspecting the timing belt position and possibly replacing the timing belt assembly.

CLAIMS DATA:

Labor Operation No:	Labor Description	Skill Category	Labor Time
09-10-02-90	Timing Belt, Inspect and Tighten Spacer (2 - Skilled)	1 - Engine Repair and Performance	0.6 Hrs.
09-10-02-91	Timing Belt, Inspect, Remove and Install or Replace (2 - Skilled)	1 - Engine Repair and Performance	3.5 Hrs.
Failure Code	ZZ	Service Action	

SPARE PARTS:

NOTE: Dealer will replace the listed parts only if anything is found damaged while performing this RSU procedure

Qty	Part No.	Description	Notes
1 (AR)	68639008AA - NA 46353914 - EMEA	Cover, Timing Belt, Outer Upper	
1 (AR)	68639014AA - NA 46353915 - EMEA	Cover, Timing Belt, Inboard	
3 (AR)	68129578AA - NA 14942224 - EMEA	Screw and Washer	
1 (AR)	68640052AA - NA 46346957 - EMEA	Belt, Timing	
1 (AR)	68639206AA - NA 46354121 - EMEA	Sprocket, Crankshaft	
1 (AR)	68228096AA - NA 55249565 - EMEA	Plug, M6X1.50	
1 (AR)	68163848AB - NA 59117409 - IAP	Mopar Antifreeze/Coolant 10 Year 150,000 Mile Formula OAT	Local Part

DIAGNOSIS:

If a customer's VIN is listed in VIP or your RSU VIN list, perform the Repair Procedure. **This RSU only applies to vehicles on the RSU VIN list.**

REPAIR PROCEDURE:

1. Remove the air cleaner. Refer to the detailed service procedures available in DealerCONNECT/Service Library under: Service Info> 09 - Engine / Air Intake System / Air Cleaner / Removal and Installation.
2. Remove the fuel filter. Refer to the detailed service procedures available in DealerCONNECT/Service Library under: Service Info> 14 - Fuel System / Fuel Delivery, Diesel / Filter, Fuel / Removal.

3. Remove and **DISCARD** the upper timing cover bolts and remove the upper timing belt cover [Fig. 1](#).



Fig. 1
Upper Timing Cover

NOTE: Do not remove the timing belt after removing the cover.

4. Remove the mounting bolt [Fig. 2](#).

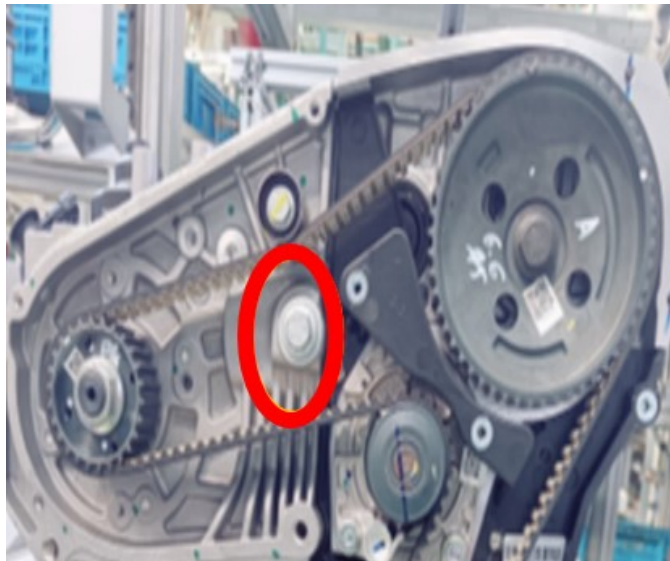


Fig. 2
Mounting Bolt

5. Loosen the Puma bolt and then torque the puma bolt spacer to 11 N·m. (97 In. Lbs.) (spec: 9 +20%) [Fig. 3](#).



Fig. 3
Puma Bolt Loosening

6. Install the mounting bolt and torque the bolt to 50 N·m (37 Ft. Lbs.) [Fig. 4](#).



Fig. 4
Puma Bolt Tightening

7. Rotate the engine 360 degree and check the belt position gap from the cam gear face to the belt face using a Vernier Caliper [Fig. 5](#).



Fig. 5
Vernier Caliper Inspection

8. Is the gap between the cam gear face and the belt face more than 3 mm (0.1 Inch) [Fig. 6](#)?
 - YES>>> Proceed to [Step 9](#).
 - NO>>> Proceed to [Step 12](#).



Fig. 6
Gap Inspection

9. Remove and reinstall the timing belt. Refer to the detailed service procedures available in DealerCONNECT/Service Library under: Service Info> 09 - Engine / Valve Timing / Belt, Timing / Removal and Installation.
10. Rotate the engine 360 degree and recheck the belt position gap from the cam gear face to the belt face with using a Vernier Caliper [Fig. 5](#).
11. Is the gap between the cam gear face and the belt face still more than 3 mm (0.1 Inch) [Fig. 6](#)?
 - YES>>> Contact the technical support team for further instruction.
 - NO>>> Proceed to [Step 12](#).
12. Install the timing cover and torque the mounting bolts to 9 N·m. (80 In. Lbs.) [Fig. 1](#).
13. Install the fuel filter. Refer to the detailed service procedures available in DealerCONNECT/Service Library under: Service Info> 14 - Fuel System / Fuel Delivery, Diesel / Filter, Fuel / Installation.

14. Install the air cleaner. Refer to the detailed service procedures available in DealerCONNECT/Service Library under: Service Info> 09 - Engine / Air Intake System / Air Cleaner / Installation.

POLICY:

Reimbursable within the provisions of the warranty.

This bulletin is supplied as technical information only and is not an authorization for repair. No part of this publication may be reproduced, stored in a retrieval system, or transmitted, in any form or by any means, electronic, mechanical, photocopying, or otherwise, without written permission of FCA US LLC.