

<b>REFERENCE:</b>	<b>TSB:</b> 08-121-24 REV. A <b>GROUP:</b> 08 - Electrical	<b>Date:</b>	May 11, 2024	<b>REVISION:</b>	08-121-24
<b>VEHICLES AFFECTED:</b>	2024 - <b>**2025**</b> (B1) Jeep Renegade 2024 - <b>**2025**</b> (M1) Jeep Compass 2024 - <b>**2025**</b> (H1) Jeep Commander This bulletin applies to vehicles built on and after July 25, 2023 (MDH 0725XX) and on and before April 15, 2024 (MDH 0415XX).	<b>MARKET APPLICABILITY:</b>			
<b>CUSTOMER SYMPTOM:</b>	Customers may experience the following: <ul style="list-style-type: none"> <li>RVC display has a blurry image, a blue screen and/or grid line that is not working <a href="#">Fig. 1</a>.</li> </ul>				
<b>CAUSE:</b>	Camera error				

This bulletin supersedes Technical Service Bulletin (TSB) 08-121-24, date of issue May 04, 2024, which should be removed from your files. All revisions are highlighted with **\*\*asterisks\*\*** and include an additional model year.

This Technical Service Bulletin (TSB) has also been released as a Rapid Service Update (RSU) 24-083, date of issue May 04, 2024. All applicable RSU VINs have been loaded. To verify this RSU service action is applicable to the vehicle, use VIP or perform a VIN search in DealerCONNECT/Service Library. All repairs are reimbursable within the provisions of warranty.



**Fig. 1**

Blue Screen, Blurry Screen, No Grid Line Screen

**REPAIR SUMMARY:**

This bulletin involves inspecting the RVC for errors and possibly replacing the RVC.

**CLAIMS DATA:**

Labor Operation No:	Labor Description	Skill Category	Labor Time
08-20-07-99	Rearview Camera Display - Inspect (2 - Skilled)	6 - Electrical and Body Systems	0.1 Hrs.
08-20-07-9A	Rearview Camera Display- Inspect and Replace (2 - Skilled)	6 - Electrical and Body Systems	0.4 Hrs.
Failure Code	ZZ	Service Action	

**SPARE PARTS:**

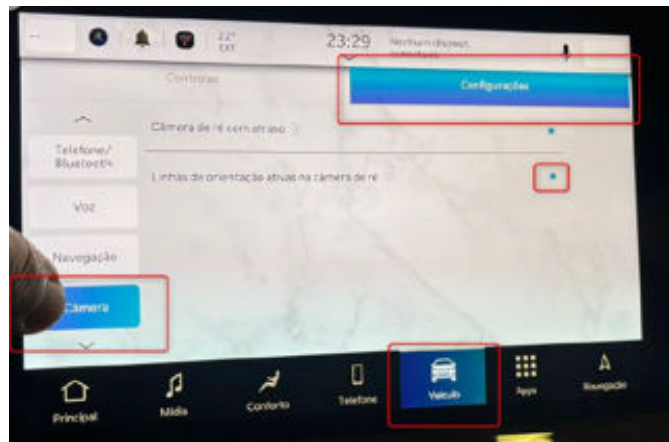
Qty	Part No.	Description	Notes
1 (AR)	7096494 - EMEA 68715153AA - MOPAR	Renegade	
1 (AR)	7096493 - EMEA 68715154AA - MOPAR	Compass	
1 (AR)	7096492 - EMEA 68715151AA - MOPAR	Commander	

**DIAGNOSIS:**

If a customer's VIN is listed in VIP or your RSU VIN list, perform the Repair Procedure. **This RSU only applies to vehicles on the RSU VIN list.**

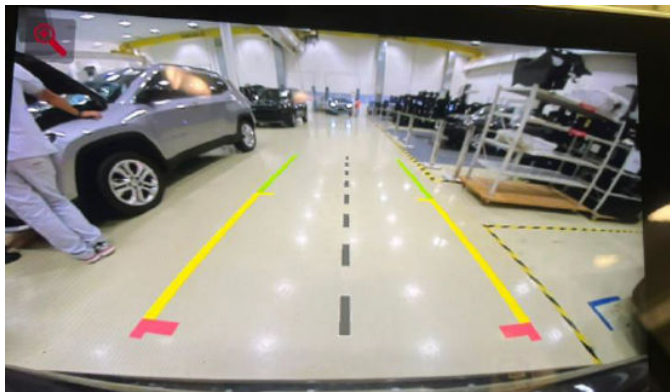
**REPAIR PROCEDURE:**

1. Place the vehicle's ignition in the on position.
2. Go to the Vehicle tab, click on Camera >> Configurations, and make sure the "Directive Lines" option is on [Fig. 2](#).



**Fig. 2**  
Directive Lines Option

3. Inspect Rearview Camera display on radio screen. Proper display shown in [Fig. 3](#).



**Fig. 3**  
Proper Display

4. Does the display have a blurry image, blue screen and/or grid line that is not working?
  - YES >>> Proceed to [Step 5](#).
  - NO >>> Bulletin has been completed. Use Inspect LOP (08-20-07-99) to close the active RSU.
5. Replace the RVC. Refer to the detailed service procedures available in DealerCONNECT> Service Library under: Service Info>08 - Electrical / 8B - Driver Assistance / Assistance System Components /Cameras/ Removal and Installation.

**POLICY:**

Reimbursable within the provisions of the warranty.

*This bulletin is supplied as technical information only and is not an authorization for repair. No part of this publication may be reproduced, stored in a retrieval system, or transmitted, in any form or by any means, electronic, mechanical, photocopying, or otherwise, without written permission of FCA US LLC.*