



# TECHNICAL SERVICE BULLETIN

Classification: DA19-011E	Reference: NTB19-042E	Date: April 12, 2024
------------------------------	--------------------------	-------------------------

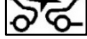

## AUTOMATIC EMERGENCY BRAKING WARNING LIGHT BLINKING

This bulletin has been amended. See **AMENDMENT HISTORY** on the last page.  
Please discard previous versions of this bulletin.

<b>APPLIED VEHICLES:</b>	2019-2024 Altima (L34)	2022-2024 Pathfinder (R53)
	2023-2024 ARIYA (FE0)	2015-2020 Rogue (T32)
	2017-2024 Armada (Y62)	2021-2024 Rogue (T33)
	2022-2024 Frontier (D41)	2016-2018 Rogue Hybrid (T32H)
	2020-2024 Kicks (P15)	2017-2022 Rogue Sport (J11)
	2018-2024 LEAF (ZE1)	2020-2024 Sentra (B18)
	2016-2023 Maxima (A36)	2020-2024 Titan/Titan XD (A61)
	2015-2024 Murano (Z52)	2020-2024 Versa (N18)
	2016 Murano Hybrid (Z52H)	2023-2024 Z (Z34)

**APPLIED SYSTEMS:** Vehicles equipped with a lane camera (see Figure 1)

### SERVICE INFORMATION

If the Automatic Emergency Braking (AEB) warning light  or  is blinking (but not illuminated steadily) or the customer states it is blinking, and there are no related DTCs, inspect the windshield.

A blinking AEB warning light may occur under the following conditions:

- When contamination or foreign material adhere to the lane camera viewing window on the windshield.
- When driving while it is snowing or when frost forms on the lane camera viewing window on the windshield.
- When the lane camera viewing window on the windshield is temporarily fogged up.

### HINT:

- Refer to the applicable ESM for diagnosis if DTCs are present in any of the following related systems:
  - Laser/Radar
  - ICC/ADAS
  - Lane Camera
- Refer to the following pages for further information.

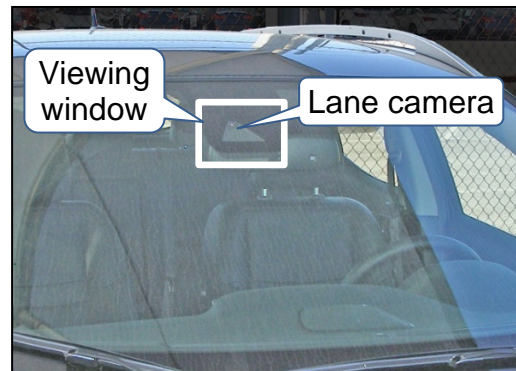
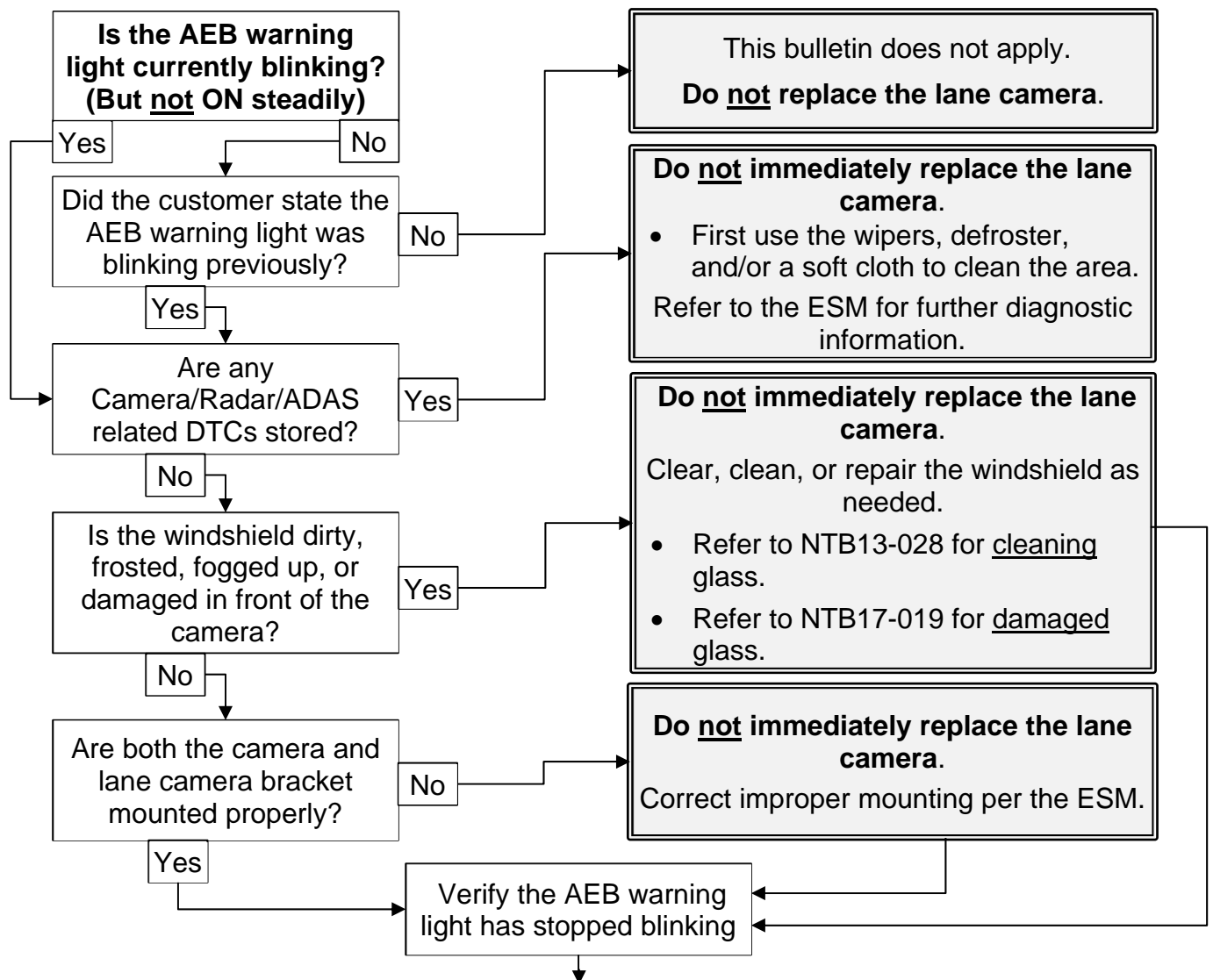


Figure 1

Nissan Bulletins are intended for use by qualified technicians, not 'do-it-yourselfers'. Qualified technicians are properly trained individuals who have the equipment, tools, safety instruction, and know-how to do a job properly and safely. **NOTE:** If you believe that a described condition may apply to a particular vehicle, DO NOT assume that it does. See your Nissan dealer to determine if this applies to your vehicle.

## FLOW CHART



### Inform the customer the following conditions may cause the AEB warning light to blink:

- Heavy rain or thick fog may cause the light to blink. Good use of wipers and keeping the windshield clean will mitigate some of the issue.
- When contamination or foreign material adhere to the lane camera viewing window on the windshield.
- When driving while it is snowing or when frost forms on the lane camera viewing window on the windshield.
- When the lane camera viewing window on the windshield is temporarily fogged up.

### Explain to the customer the difference between contamination detection and a malfunction.

### During the following conditions, the AEB warning light may blink/flash. However when these conditions no longer exist, the AEB will resume automatically:

- Strong light is shining from over the front of the vehicle.
- The cabin temperature is over approximately 104°F (40°C) in direct sunlight.
- The radar sensor picks up interference from another radar source.
- When driving on roads without any road structures or buildings (for example: long bridges, deserts, snow fields, driving next to long walls).

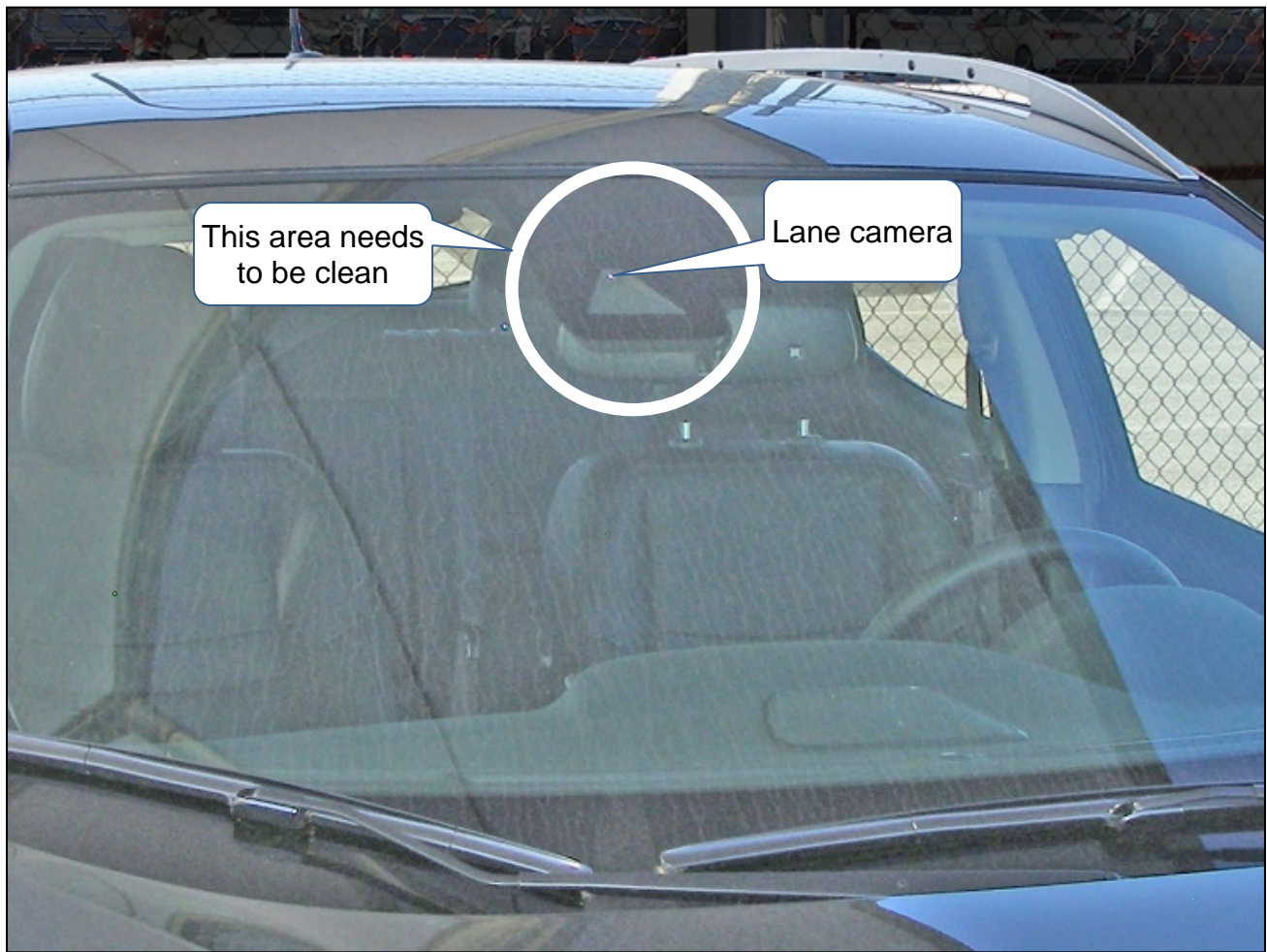


Figure 2

**AMENDMENT HISTORY**

<b>PUBLISHED DATE</b>	<b>REFERENCE</b>	<b>DESCRIPTION</b>
May 22, 2019	NTB19-042	Original bulletin published
November 5, 2020	NTB19-042a	<b>APPLIED VEHICLES</b> updated
February 3, 2021	NTB19-042b	Classification number updated
January 26, 2022	NTB19-042C	<b>APPLIED VEHICLES</b> updated
March 9, 2023	NTB19-042D	<b>APPLIED VEHICLES</b> updated, and "NOTE" references changed to "HINT"
April 12, 2024	NTB19-042E	<b>APPLIED VEHICLES</b> updated