



Technical Service Bulletin

SUBJECT: REMOTE CLIMATE CONTROL WILL NOT WORK PROPERLY DURING COLD TEMPERATURES		No: TSB-24-55-001	
		DATE: May 2024	
		MODEL: Outlander Plug-in Hybrid	
CIRCULATE TO:	<input type="checkbox"/> GENERAL MANAGER	<input checked="" type="checkbox"/> PARTS MANAGER	<input checked="" type="checkbox"/> TECHNICIAN
<input checked="" type="checkbox"/> SERVICE ADVISOR	<input checked="" type="checkbox"/> SERVICE MANAGER	<input checked="" type="checkbox"/> WARRANTY PROCESSOR	<input checked="" type="checkbox"/> SALES MANAGER

PURPOSE

During cold temperatures, the heater will not properly work when using Mitsubishi Connect APP (Remote Climate Control). More specifically, the heat pump system has decreased performance and the compressor is unable to function properly during temperatures of 5° F or lower. Additionally, because the engine will not run while using the Remote Climate Control function, the heating system does not have the necessary heat source.

On a customer complaint basis, please:

- Perform the programming listed in this bulletin according to the flow chart and procedures
- Modify the configuration system setting to allow the engine to run while using Mitsubishi Connect APP
- Reference TIN-21-00-008 and the service manual for programming information when replacing an ECU.

IMPORTANT:

- If a customer complaint is that the A/C system turns off unintentionally and does not automatically turn back on, or the A/C setting value changes, please perform: TSB-22-55-002REV3 if it has not already been done
- If after applying TSB-22-55-002REV3, the customer complaint is that the Remote Climate Control function does not function properly during temperature of 5° or lower, proceed with performing this bulletin
- It is NOT necessary to check and erase DTCs after each individual programming function - Please DO check and erase DTCs after the last programming has completed

AFFECTED VEHICLES

2023-2024 Outlander Plug-in Hybrid

REPAIR PROCEDURE

Please perform the following 3 items on a customer complaint basis:

1. Applicable Case Procedure: replacement, programming and configuration modification.
2. Insert attached Notification of Owner's manual (Smartphone connection) change instruction sheet into the owner's manual.
3. Explain to the customer how the heating system will be modified, how to use the application and ask customers to update the Mitsubishi Connect APP to the latest version (assisting the customer if necessary).

Copyright 2024, Mitsubishi Motors North America, Inc.

The information contained in this bulletin is subject to change. For the latest version of this document, go to the Mitsubishi Dealer Link, MEDIC, or the Mitsubishi Service Information website (www.mitsubishitechinfo.com).

CASE TABLE

ECU	Operation.	Case							
		①	②	③	④	⑤	⑥	⑦	⑧
A/C AMP (HVAC)	Part replacement	✓	/	/	/	/	/	/	/
	Reprogramming	/	✓	/	/	/	/	/	/
POWER DRIVE UNIT (PDU)	Reprogramming	✓	✓	✓	/	/	/	/	/
REMCU (R-MCU)	Reprogramming	✓	✓	✓	✓	/	/	/	/
PHEV A/C AMP (HVAC2)	Reprogramming	✓	✓	✓	✓	✓	/	/	/
ECM (ENGINE)	Part replacement + Reprogramming	✓	✓	✓	✓	✓	✓	/	/
PHEV-ECU (PHEV)	Reprogramming	✓	✓	✓	✓	✓	✓	✓	/
BCM	Chage configuration setting on special function	✓	✓	✓	✓	✓	✓	✓	✓

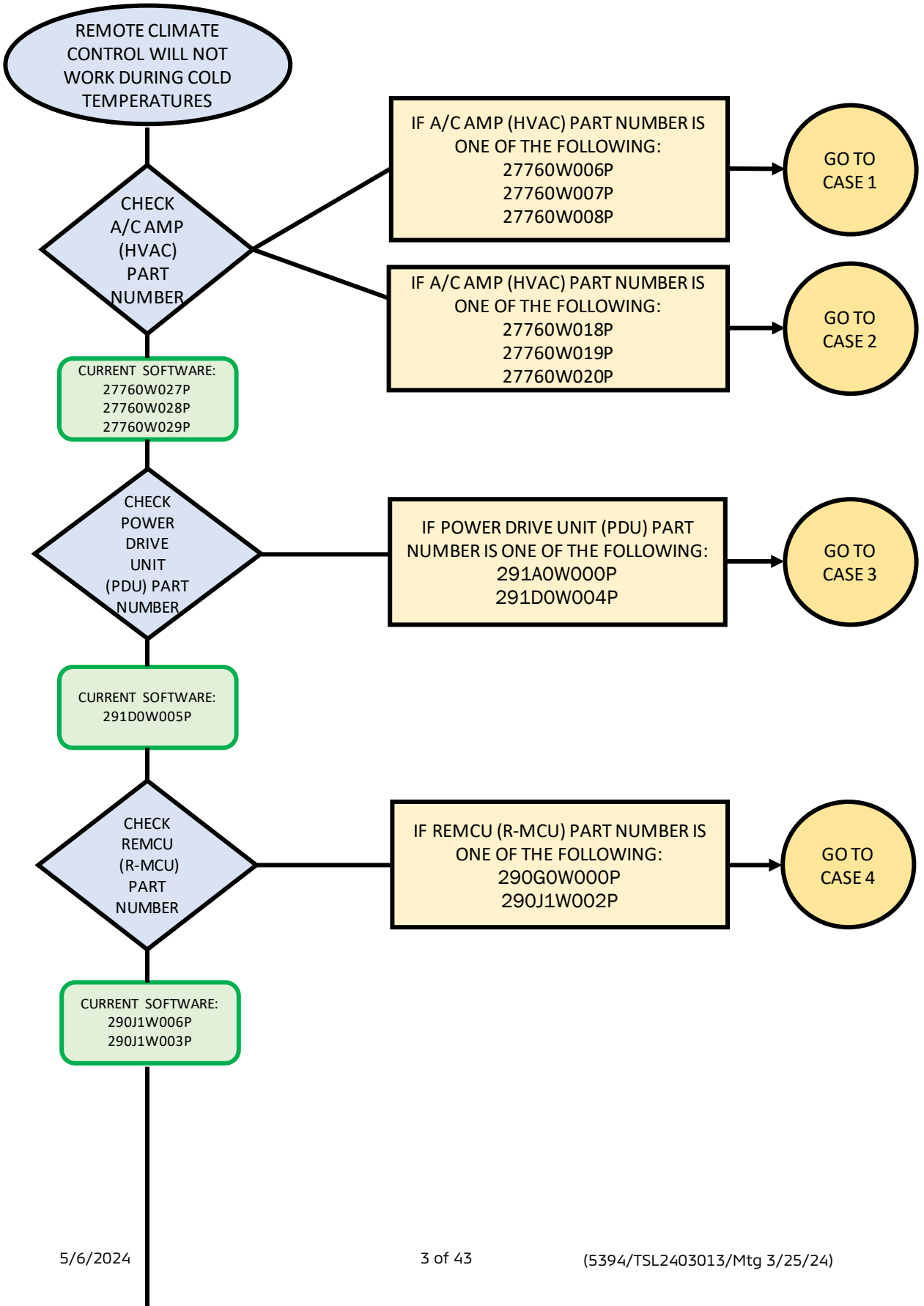
✓ = Applicable case(s)

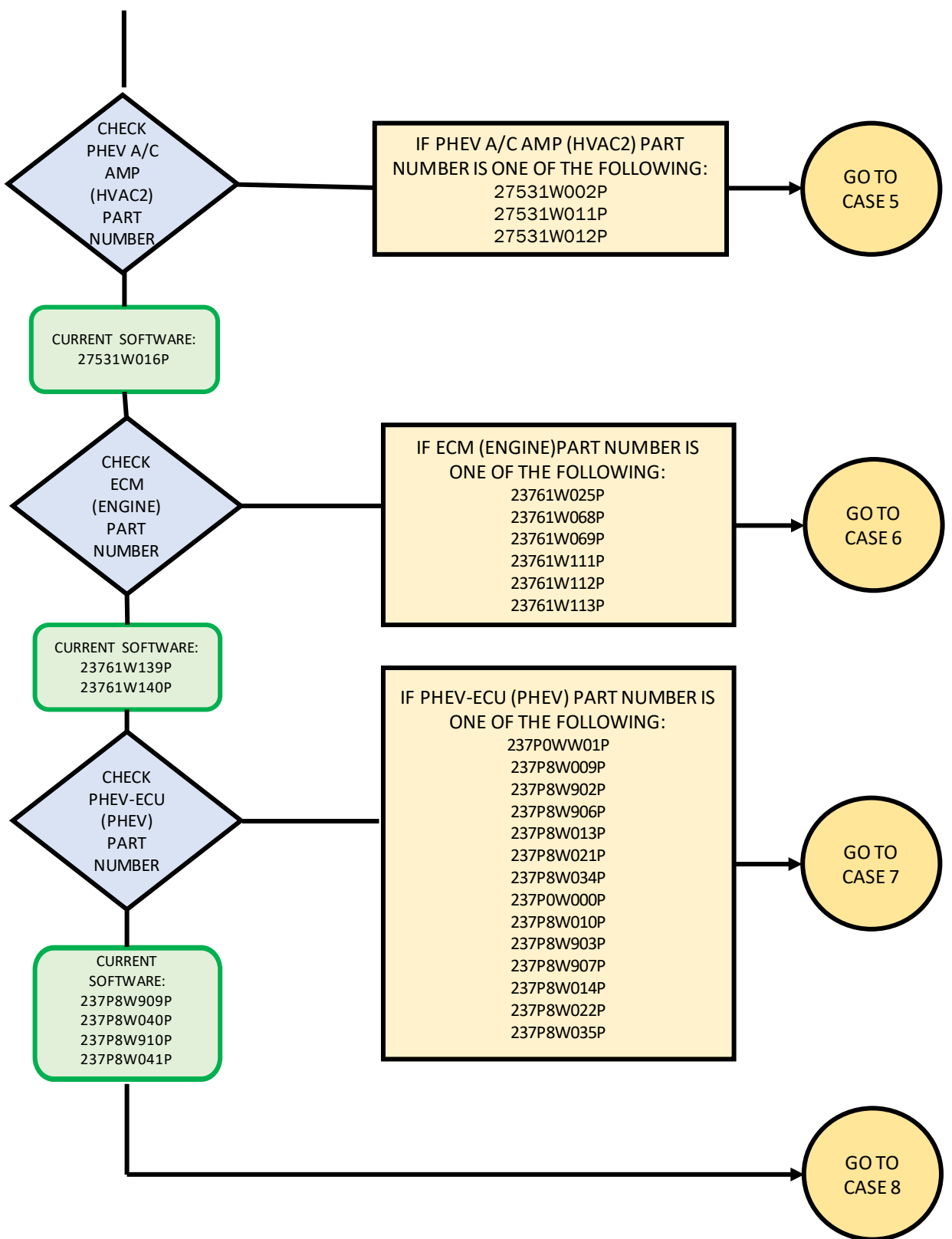
NOTE: Please refer to the flowchart and flowchart steps for additional details for cases.

Caution during programming:

- Turn off all electrical devices to minimize the vehicle's electrical load. Also use an external power source to ensure that the vehicle battery maintains the specified voltage during programming.
The low voltage of the auxiliary battery may cause the incomplection of programming and once it happens, ECU must be replaced to brand new one.
- Write down all the customer's electrical device settings such as A/C and radio before programming and restore them after programming.
- Connect the MUT3-SE to an AC power source to prevent internal battery discharge.
- Before using, make sure the USB cable and MUT3-SE main harness are not damaged.
- Do not perform maintenance work in the engine room during programming.
The cooling fan may operate while programming.
- Check the All DTC after programming and erase them if any.

CASE FLOW CHART





CASE FLOW CHART STEPS

CASE 1:

Please replace the A/C AMP and ECM with countermeasure ones by referring to the service manual and the Parts Information section of this bulletin.

After replacing the ECUs with countermeasure ones, refer to the service manual and perform the operation below for A/C AMP and ECM.

■ A/C AMP

A/C AMP Configuration update, and perform "motor zero point reset" though self-diagnosis using MUT3-SE.

■ ECM

Refer to the Parts Information section of this bulletin, ECM programming, register VIN, and Throttle Valve Control servo learning.



Open tailgate and engine hood.
(Do not close these until finished programming.)



Press the power switch once without depressing brake pedal to place vehicle into ACC mode.
After that press the power switch for more than 5 seconds to shut vehicle down.



Press the power switch once without depressing brake pedal to place vehicle into ACC mode.
(Do not turn off until programming has finished.)



Program each ECU referring to the Parts Information section of this bulletin (REMCU/R-MCU, POWER DRIVE UNIT/PDU, PHEV-ECU/PHEV, PHEV A/C AMP/HVAC2).



Modify the configuration setting of BCM by special function.



Clear All DTCs.

CASE 2:

Please replace the ECM with a countermeasure one by referring to the service manual and Parts Information section of this bulletin.

After replacing the ECU with a countermeasure one, refer to service manual and perform the operation below to the ECM.

■ ECM

Refer to the Parts Information section of this bulletin, ECM programming, register VIN, and Throttle Valve Control servo learning.



Open tailgate and engine hood.
(Do not close these until finished programming.)



Press the power switch once without depressing brake pedal to place vehicle into ACC mode.
After that press the power switch for more than 5 seconds to shut vehicle down.



Press the power switch once without depressing brake pedal to place vehicle into ACC mode.
(Do not turn off until programming has finished.)



Program each ECU referring to the Parts Information section of this bulletin (REMCU/R-MCU, POWER DRIVE UNIT/PDU, PHEV-ECU/PHEV, A/C AMP/HVAC, PHEV A/C AMP/HVAC2).



Modify the configuration setting of BCM by special function.



Clear All DTCs.

CASE 3:

Please replace the ECM with a countermeasure one by referring to the service manual and Parts Information section of this bulletin.

After replacing the ECU with a countermeasure one, refer to the service manual and perform the operation below to the ECM.

■ ECM (Engine)

Refer to the Parts Information section of this bulletin, ECM programming, register VIN, and Throttle Valve Control servo learning.



Open tailgate and engine hood.
(Do not close these until finishing the programming.)



Press the power switch once without depressing brake pedal to place vehicle into ACC mode.
After that press the power switch for more than 5 seconds to shut vehicle down.



Press the power switch once without depressing brake pedal to place vehicle into ACC mode. (Do not turn off until programming has finished.)



Program each ECU referring to the Parts Information section of this bulletin (REMCU, POWER DRIVE UNIT, PHEV-ECU, PHEV A/C AMP).



Modify the configuration setting of BCM by special function.



Clear All DTCs.

CASE 4:

Please replace the ECM with a countermeasure one by referring to the service manual and Parts Information section of this bulletin.

After replacing the ECU with a countermeasure one, refer to service manual and perform the operation below to the ECM.

■ ECM

Refer to the Parts Information section of this bulletin, ECM programming, register VIN, and Throttle Valve Control servo learning.



Open tailgate and engine hood.
(Do not close the door until finished with the programming.)



Press the power switch once without depressing brake pedal to place vehicle into ACC mode.
After that press the power switch for more than 5 seconds to shut vehicle down.



Press the power switch once without depressing brake pedal to place vehicle into ACC mode.
(Do not turn off until programming has been finished.)



Program each ECU referring to the Parts Information section of this bulletin (REMCU, PHEV-ECU, PHEV A/C AMP).



Modify the configuration of BCM by special function.



Clear All DTCs.

CASE 5:

Please replace the ECM with a countermeasure one referring to the service manual and Parts Information section of this bulletin.

After replacing the ECU with a countermeasure one, refer to the service manual and perform the operation below to the ECM.

■ ECM

Refer to Parts Information section of this bulletin, ECM programming, register VIN, and Throttle Valve Control servo learning.



Open tailgate and engine hood.
(Do not close these until the programming is finished.)



Press the power switch once without depressing brake pedal to place vehicle into ACC mode.
After that press the power switch for more than 5 seconds to shut vehicle down.



Press the power switch once without depressing brake pedal to place vehicle into ACC mode.
(Do not turn off until programming has finished.)



Program each ECU referring to Parts Information section of this bulletin. (PHEV-ECU, PHEV A/C AMP).



Modify the configuration setting of BCM by special function.



Clear All DTCs.

CASE 6:

Please replace the ECM with a countermeasure one by referring to the service manual and Parts Information section of this bulletin.

After replacing the ECU with a countermeasure one, refer to the service manual and perform the operation below to the ECM.

■ ECM

Refer to the Parts Information section of this bulletin, ECM programming, register VIN, and Throttle Valve Control servo learning.



Open tailgate and engine hood.
(Do not close these until programming is finished.)



Press the power switch once without depressing brake pedal to place vehicle into ACC mode.
After that press the power switch for more than 5 seconds to shut vehicle down.



Press the power switch once without depressing brake pedal to place vehicle into ACC mode.
(Do not turn off until programming has finished.)



Program each ECU referring to Parts Information section of this bulletin.



Modify the configuration setting of BCM by special function.



Clear All DTCs.

CASE 7:

Open tailgate and engine hood.
(Do Not close these until programming has finished.)



Press the power switch once without depressing brake pedal to place vehicle into ACC mode.
After that press the power switch for more than 5 seconds to shut vehicle down.



Press the power switch once without depressing brake pedal to place vehicle into ACC mode.
(Do not turn off until programming has finished.)



Program each ECU referring to Parts Information section of this bulletin (PHEV-ECU).



Modify the configuration setting of BCM by special function.



Clear All DTCs.

CASE 8:

Modify the configuration setting of BCM by special function.



Clear All DTCs.

WORK PROCEDURE

Each ECU name on MUT3-SE is different. Please refer to the table below when programming.

ECU	ECU NAME ON MUT3-SE
REMCU	R-MCU
POWER DRIVE UNIT	PDU
PHEV-ECU	PHEV
ECM	ENGINE
A/C AMP	HVAC
PHEV A/C AMP	HVAC2
BCM	BCM

Caution during programming:

- Turn off all electrical devices to minimize the vehicle's electrical load. Also use an external power source to ensure that the vehicle battery maintains the specified voltage during programming.
The low voltage of the auxiliary battery may cause the incompleteness of programming and once it happens, ECU must be replaced to brand new one.
- Write down all the customer's electrical device settings such as A/C and radio before programming and restore them after programming.
- Connect the MUT3-SE to an AC power source to prevent internal battery discharge.
- Before using, make sure the USB cable and MUT3-SE main harness are not damaged.
- Do not perform maintenance work in the engine room during programming.
The cooling fan may operate while programming.
- Check the All DTC after programming and erase them if any.

EQUIPMENT

- The following equipment is needed to reprogram the ECU:
- VCI (Vehicle Communication Interface) or VCI Lite - MB991824 or MB992744
- MEDIC Laptop/Tablet with A/C power adapter - 520924, or FZG1MK2
- MUT III Main Harness "A" (blue connector at the DLC end) - MB991910 or MB992745
- USB 2.0 Cable - MB991827 or MB992747
- MEDIC 3.5/4 update at **868** or higher
- For Standalone MUT III units, MUT3-SE Reprogramming Database **SDBN 240202NR** or higher

ECU PROGRAMMING

PROGRAMMING

• A/C AMP

Model	Data No.	New HW Part No.	New SW Part No./Ver.	Target HW Part No.	Target SW Part No./Ver.	Remarks
GNOW	27531W02.0PN	-	27531W020P	-	27760W018P	DUAL A/C Without seat heater
		-		-	27760W019P	DUAL A/C With seat heater
	27531W02.1PN	-	27531W021P	-	27760W020P	TRIPLE A/C

• POWER DRIVE UNIT

Model	Data No.	New HW Part No.	New SW Part No./Ver.	Target HW Part No.	Target SW Part No./Ver.	Remarks
GNOW	291D0W00.5PN	-	291D0W005P	291A0W000P	291A0W000P	23-24MY
		-		291A1W080P	291A0W000P	23-24MY Spare parts.
		-		291A0W050P	291D0W004P	24MYR/C
		-		291A0W070P	291D0W004P	24MYR/C Spare parts.

• REMCU

Model	Data No.	New HW Part No.	New SW Part No./Ver.	Target HW Part No.	Target SW Part No./Ver.	Remarks
GNOW	290J1W00.6PN	-	290J1W006P	290G0W000P	290G0W000P	23MY
	290J1W00.3PN	-	290J1W003P	290G0W040P	290J1W002P	24MY

• PHEV A/C AMP

Model	Data No.	New HW Part No.	New SW Part No./Ver.	Target HW Part No.	Target SW Part No./Ver.	Remarks
GNOW	27531W01.6PN	-	27531W016P	27447W000P	27531W002P 27531W011P	23-24MY
	27531W01.6PN	-		27447W050P	27531W012P	23-24MY

• ECM

Model	Data No.	New HW Part No.	New SW Part No./Ver.	Target HW Part No.	Target SW Part No./Ver.	Remarks
GNOW	23761W13.9PN	-	23761W139P	23703W018P	-(Blank ECU)	23MY
GNOW	23761W14.0PN	-	23761W140P	23703W018P	-(Blank ECU)	24MY

ECU PROGRAMMING (Continued)

PART REPLACEMENT/PROGRAMMING

• A/C AMP

Model	Part Name	Part No.		Quantity	Features	Remarks
		<New>	<Old>			
GNOW	AMPLIFIER,HVAC	27760W027P	27760W006P	1	DUAL A/C Without seat heater	Confirm the factory installed ECU part No. and replace to corresponding new part No.
		27760W028P	27760W007P	1	DUAL A/C With seat heater	
		27760W029P	27760W008P	1	TRIPLE A/C	

• ECM

Model	Part Name	Part No.		Quantity	Remarks
		<New>	<Old>		
GNOW	HARDWARE-ENG CONT	23703W018P	1860D658 (23703WW00P)	1	
			23703W010P	1	

SOFTWARE/MEDIC VERSION VERIFICATION

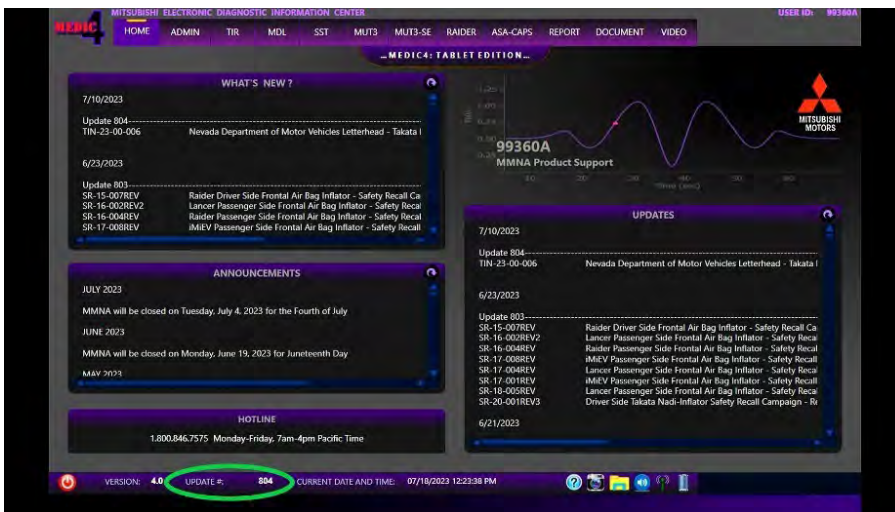
1. Verify that the ECU has not already been updated to the latest S/W number in the table above. If the ETACS ECU is at the latest level, reprogramming is not necessary.

NOTE: Reprogramming the ETACS ECU with the latest database (e.g., **SDBN 240202NR**) includes all past and current reprogramming for TSBs of affected vehicles. It is not necessary to reprogram the ECU for each previous TSB.

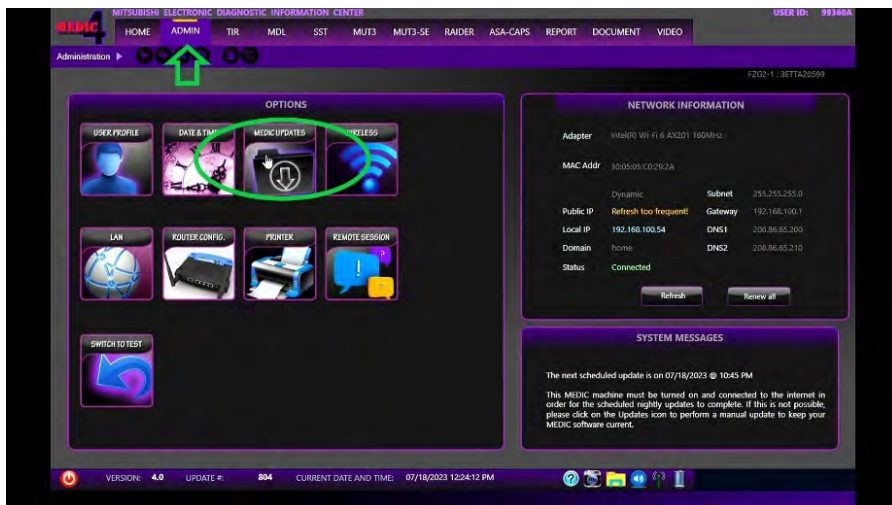
For MEDIC 3.5/4 users only: (MUT-III SEV users go to step 5)

2. Verify the MEDIC 3.5/4 is at version 3.5 and at update **868** or higher.

If your **MEDIC 3.5/4 update is at least 868**, continue with the Reprogramming Procedure.
If your **MEDIC 3.5/4 update is below 868**, update your MEDIC as follows.



3. Select the MEDIC 3.5/4 Admin tab and click on "Updates".



4. If the MEDIC update screen advises updates are available, click the "Begin" button. After all updates are complete, **GO TO THE REPROGRAMMING PROCEDURE.**

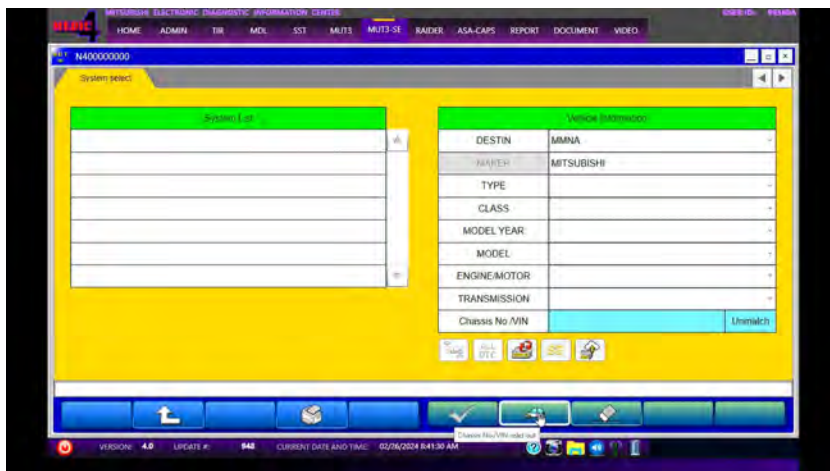


5. STANDALONE MUT-III SE SCAN TOOL VIEWER (STV) ONLY: (MEDIC 3.5 USERS – GO TO THE REPROGRAMMING PROCEDURE). Verify that your MUT-III SE has the most current version of the reprogramming database from the MUT-III SE Main Page.

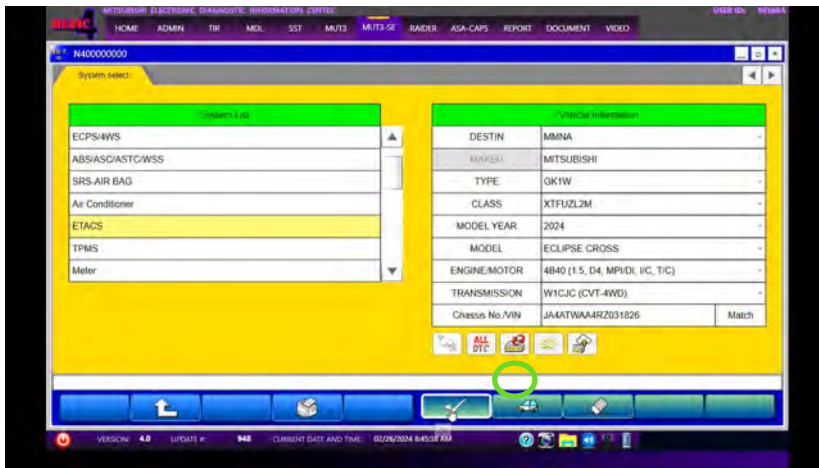
- a. Press the MUT-III SE STV button.



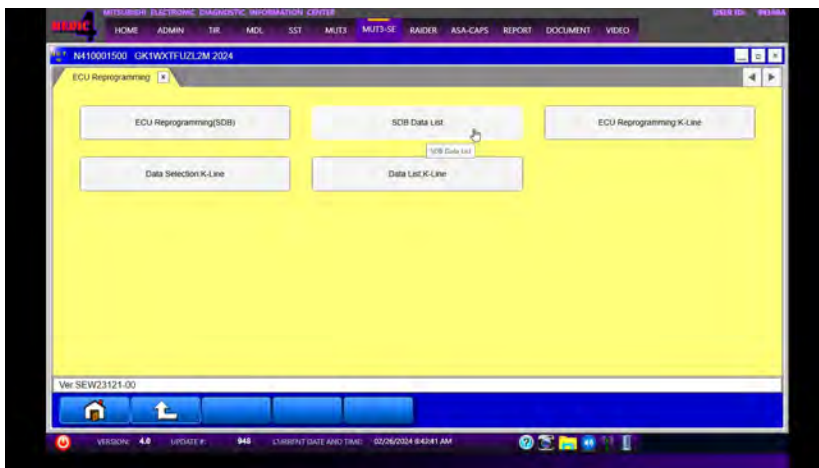
- b. Push the car icon for Chassis No/VIN read out.



- c. Confirm the vehicle information displayed is complete/correct, press the ECU reprogramming button.



- d. Select SDB Data List button.



- e. Verify the Data No 8637A829 is listed with the new software.



REPROGRAMMING PROCEDURE

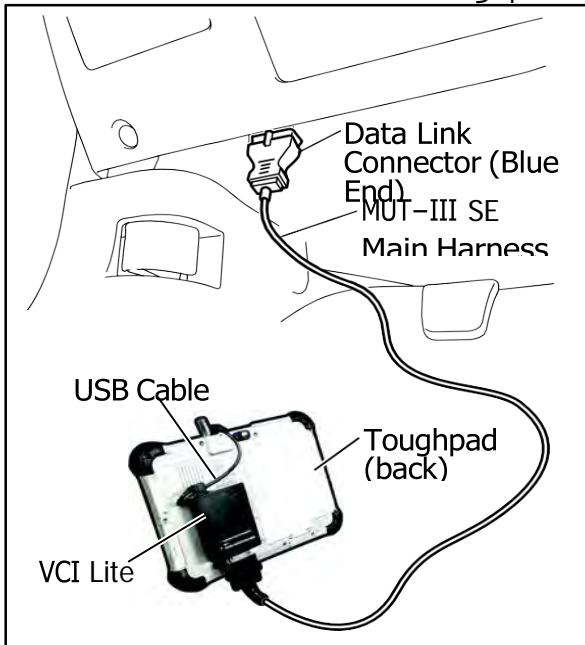
⚠ CAUTION

To ensure that the vehicle battery maintains 12V during the procedure, hook-up a battery charger to the vehicle during the procedure.

NOTE: VCI Stand-alone reprogramming is not available for this procedure. The laptop/tablet and the VCI must remain connected for the entire procedure.

1. Connect the equipment as follows:

NOTE: VCI Lite and MEDIC 4.0 Toughpad shown for illustration purposes only.



- Turn the MEDIC PC/tablet on. If the battery indicator in the lower right hand corner of the screen does not show a full charge, it is recommended that either the battery be charged prior to beginning or be used with the A/C power adaptor connected.
- Connect the USB cable to the VCI/VCI Lite. When the laptop/tablet displays the MUT-III SE main screen, connect the USB cable to the device.
- Connect the MUT-III SE main harness with the blue DLC connection to the VCI/VCI Lite. Connect the blue connection of the MUT-III SE main harness to the vehicle's data link connector.
- For VCI only: Turn the VCI power switch ON. Verify that the indicator lamp in the upper right corner of the screen is green.

⚠ CAUTION

DO NOT DISTURB THE HARNESS CABLES OR CONNECTIONS DURING THE REPROGRAMMING PROCESS AS IT COULD CAUSE THE CONTROL UNIT TO LOSE DATA. IF THE USB CABLE IS DISCONNECTED DURING THIS PROCEDURE, A WARNING MESSAGE WILL DISPLAY.

NOTE: Due to limited space it may be easiest to connect battery charger cable onto ground point.

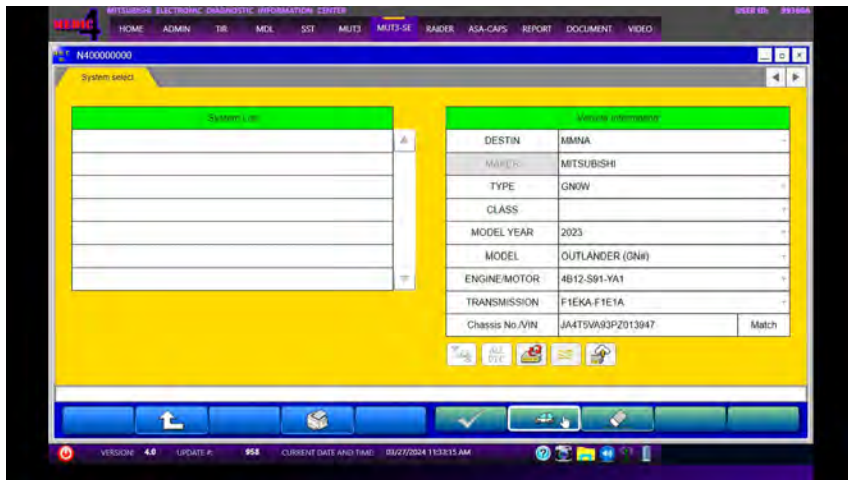


Note: Do not disturb the cable or turn off the ignition during reprogramming to prevent damage to the ECU.

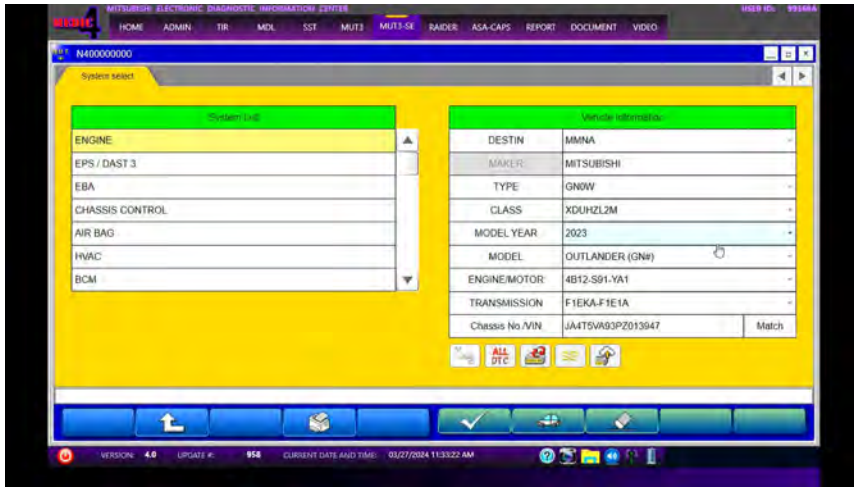
2. Turn the ignition switch to the "ON" position.
3. Turn on flashers to prevent vehicle from shutting/powering down.
4. Press the MUT-III SE STV button.



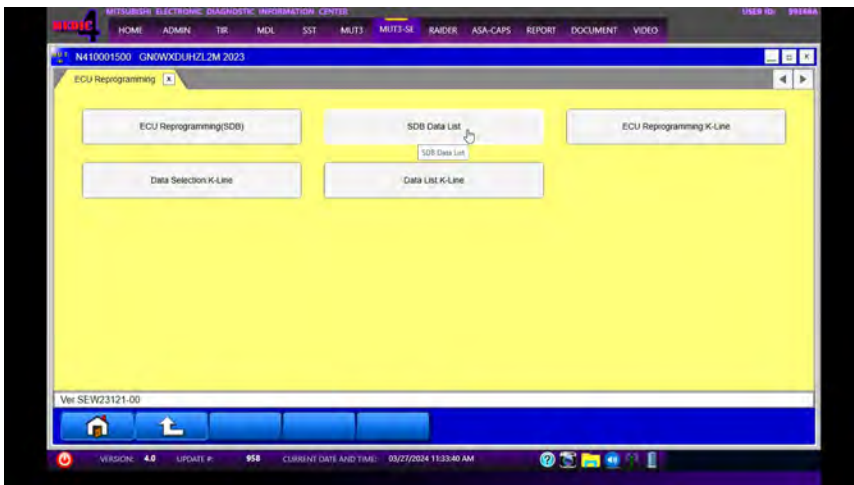
5. Press the Chassis No/VIN read out (car icon) and verify all vehicle information.



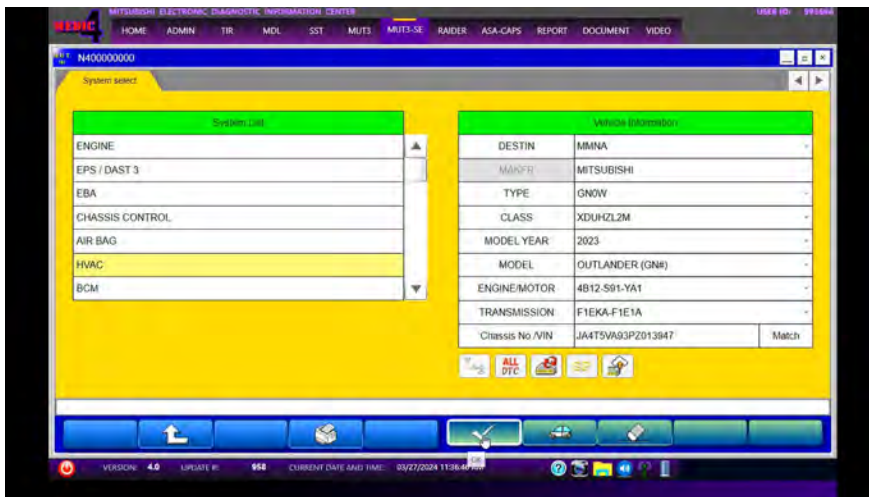
- Look at the label on the passenger side B pillar to identify the appropriate class. (See B pillar label below; class is labeled as "model").



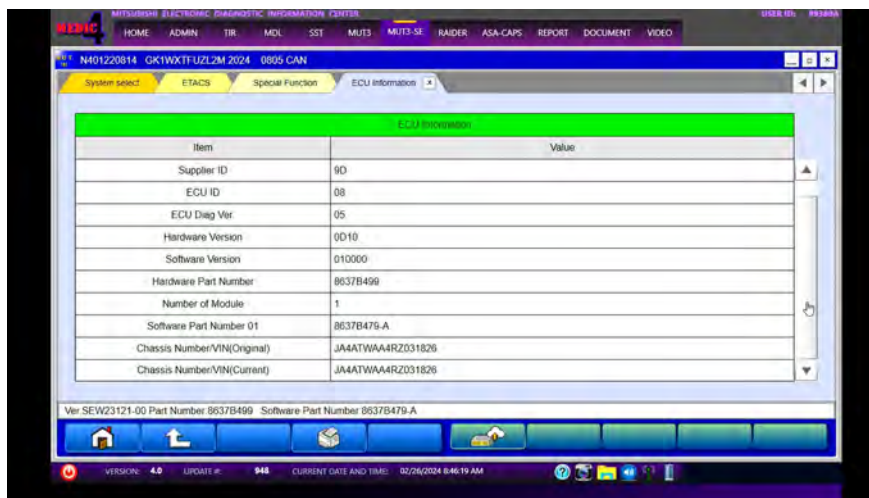
- Select SDB Data List.



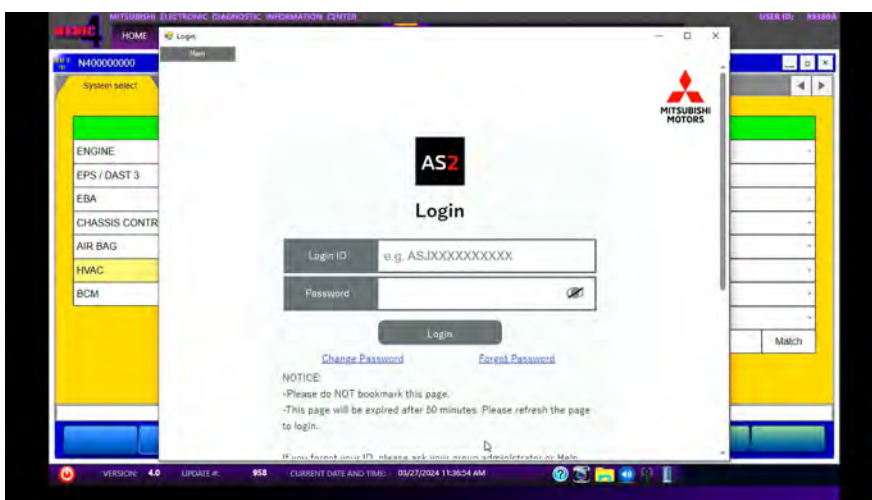
- Verify software Information according to the flow chart and applicable case # from pages 3-4 of this bulletin. This bulletin was prepared using Case #1. After software check (case identified), for A/C Amp replacement or reflash please reference TSB-22-55-002REV3.



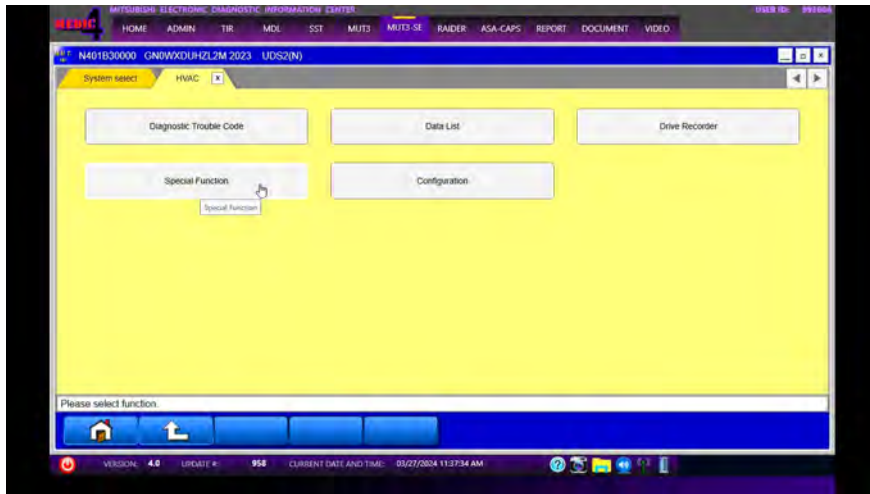
- Select HVAC and press the OK button.



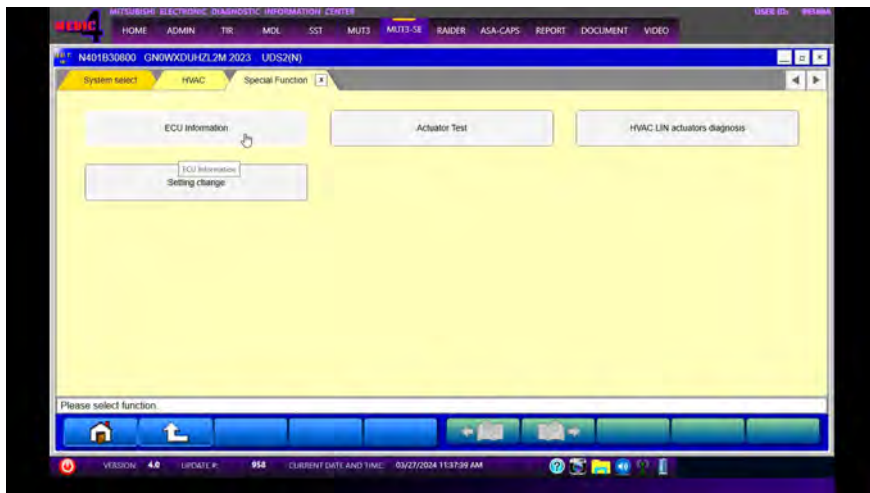
- Log in to AS2.



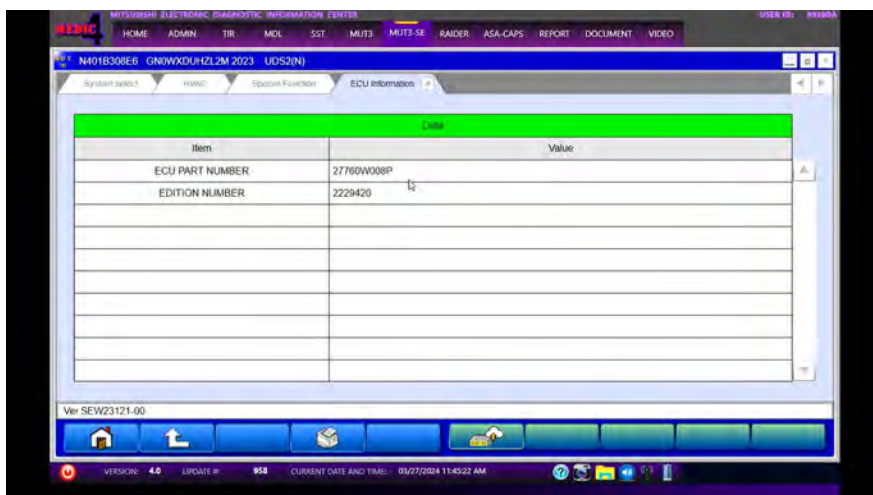
11. Select Special Function.



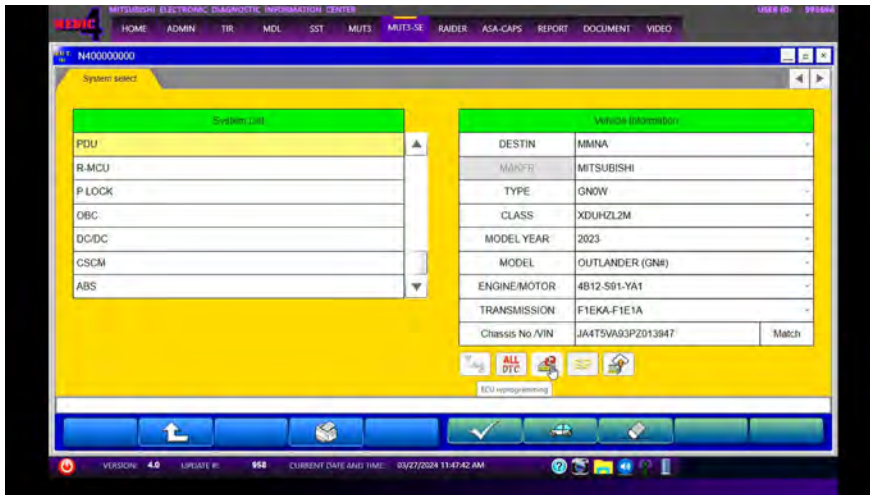
12. Select ECU Information.



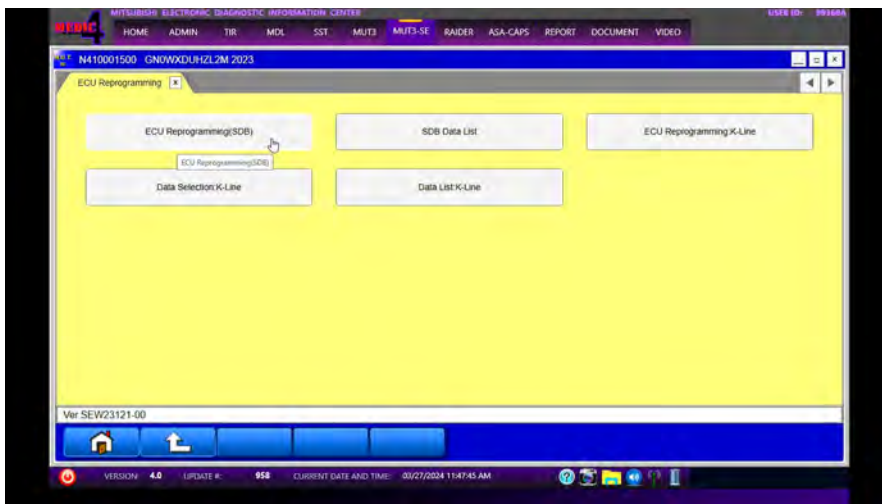
13. Verify ECU Part Number.



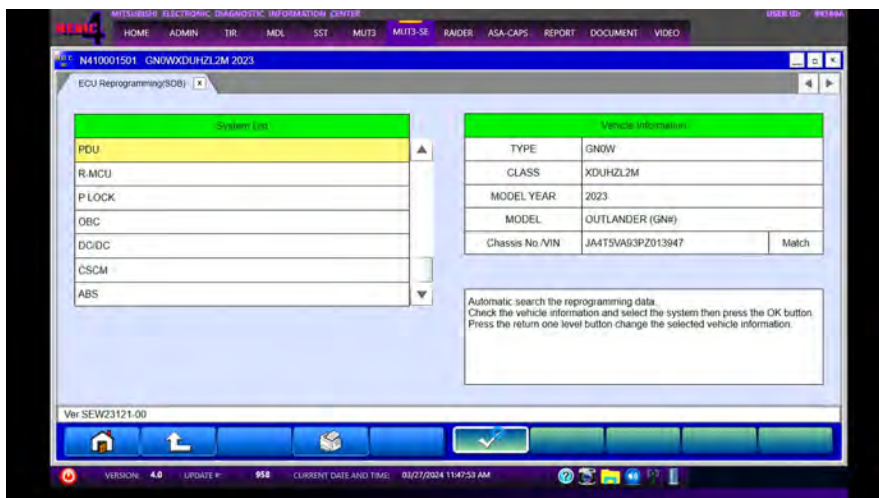
14. Select PDU and press the ECU reprogramming button.



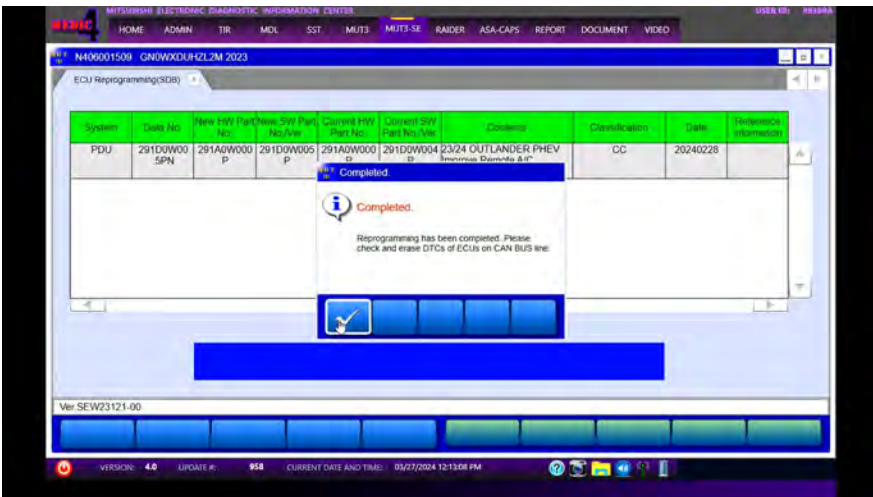
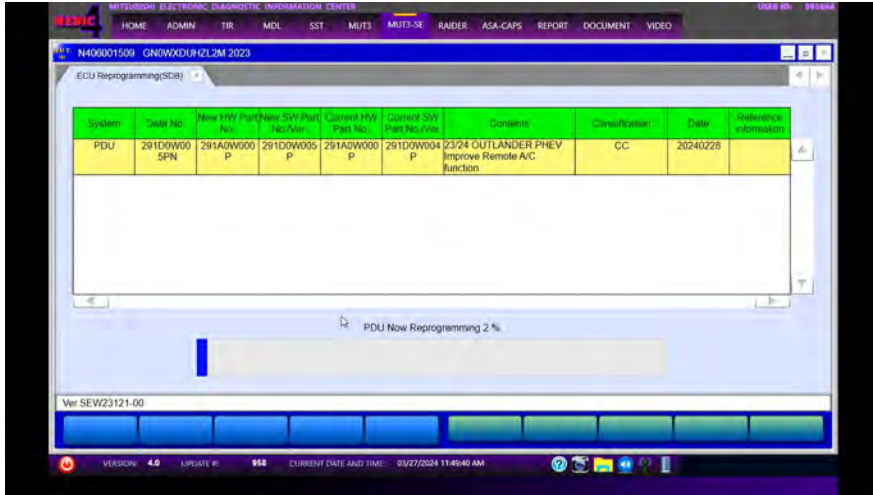
15. Select ECU Reprogramming (SDB).



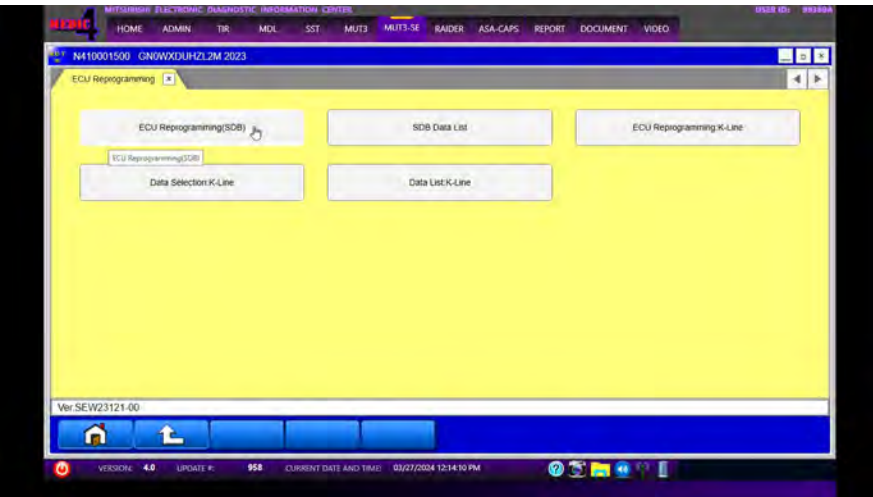
16. Select PDU from the System List and press OK.



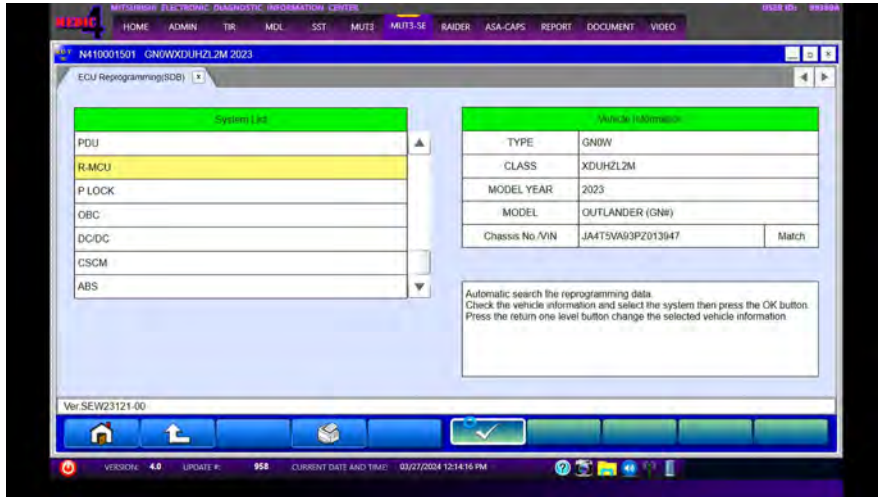
19. PDU reprogramming status bar will be displayed. When completed press OK.



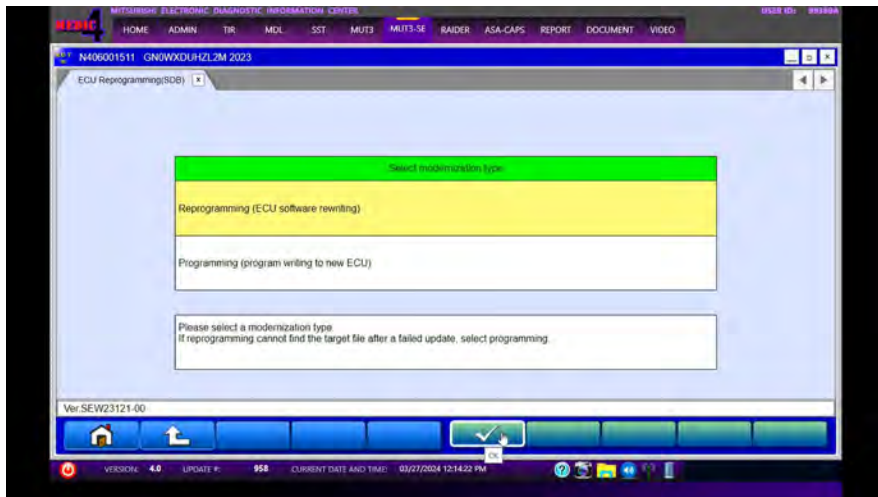
20. Return to ECU Reprogramming and select ECU Reprogramming (SDB).



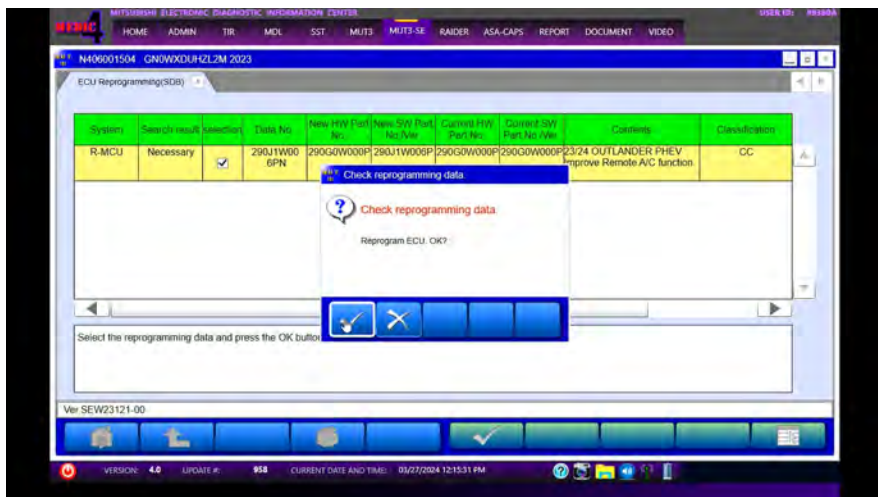
21. Select R-MCU from the ECU Reprogramming (SDB) System List and press the OK button.



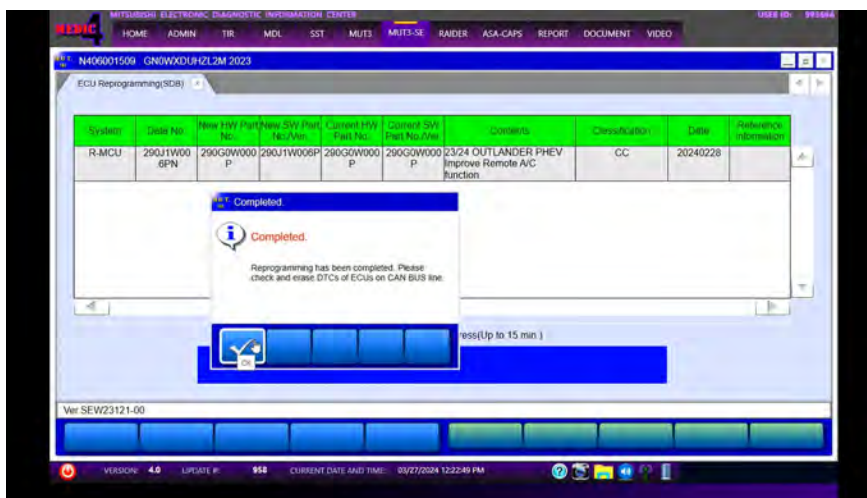
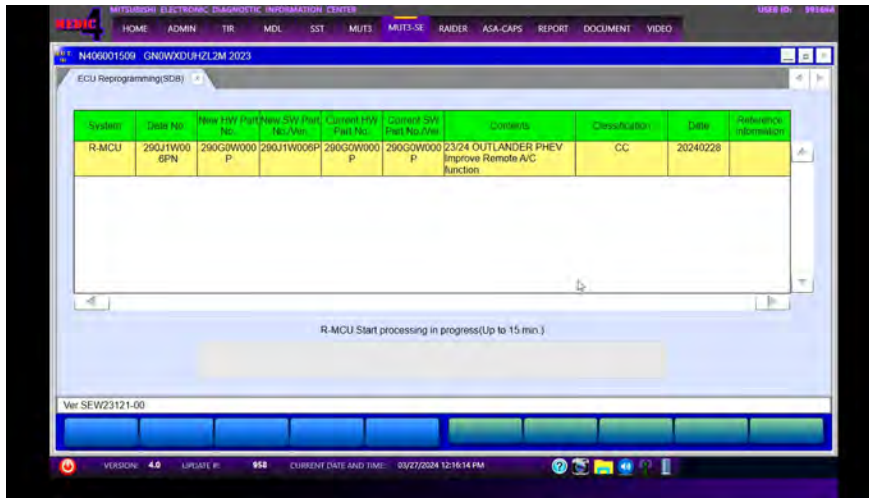
22. Select Reprogramming (ECU software rewriting) from the modernization type list and press OK.



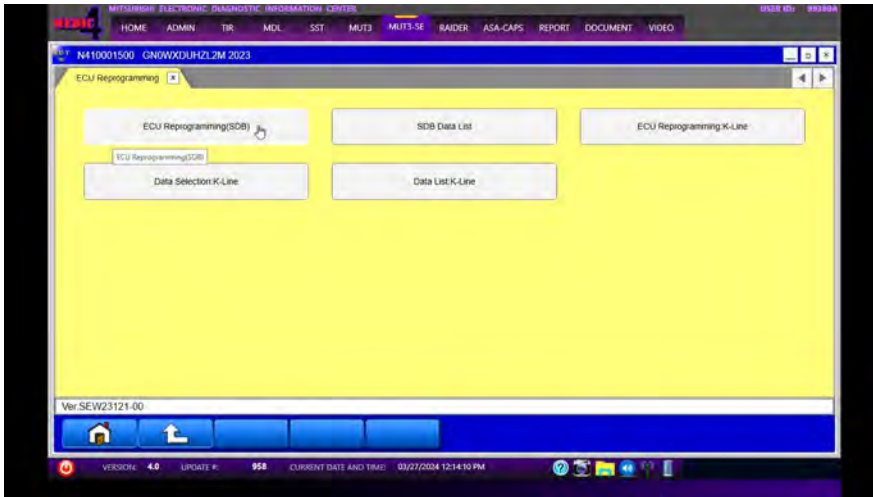
23. Verify the software, click the selection box and press OK to begin reprogramming.



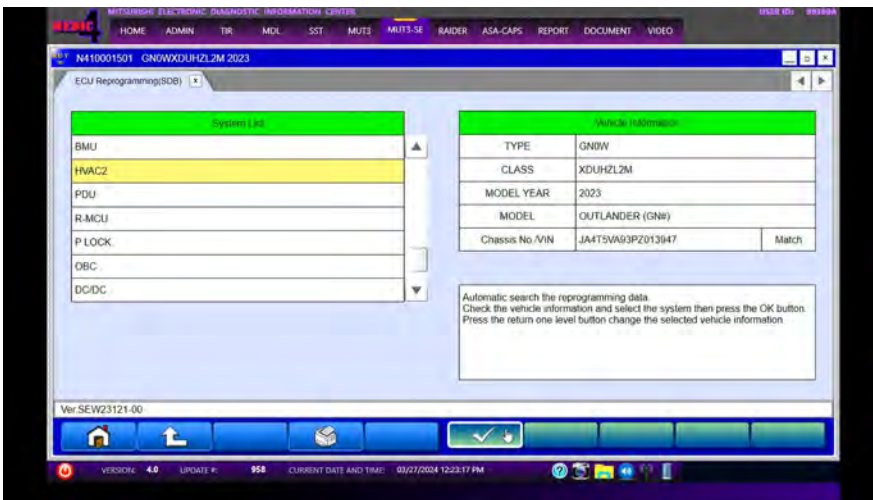
24. R-MCU processing may take up to 15 minutes to complete. A status bar will appear to show the progression. Press OK when complete.



25. Return to ECU Reprogramming and select ECU Reprogramming (SDB).



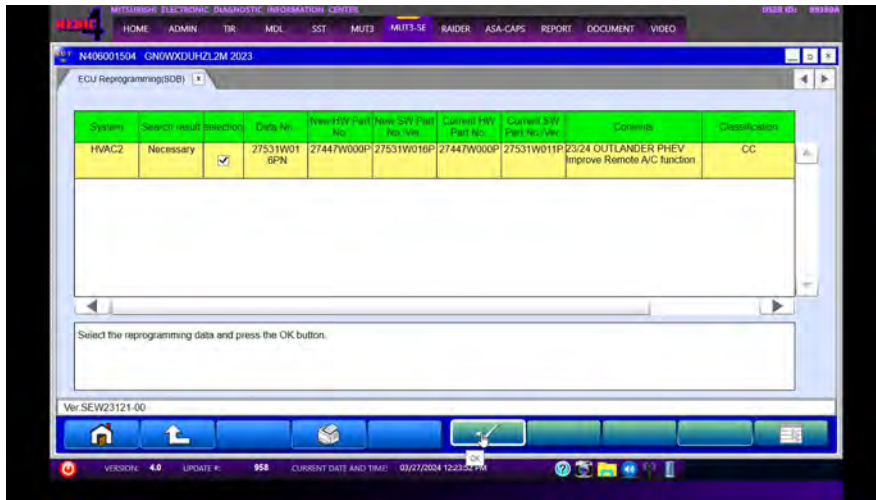
26. Select HVAC2 from the ECU Reprogramming (SDB) System List and press the OK button.



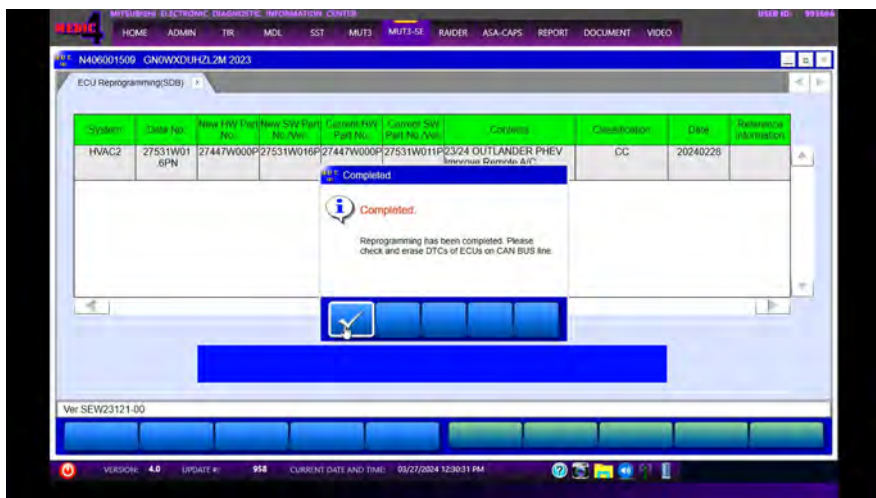
27. Select Reprogramming (ECU software rewriting) from the modernization type list and press OK.



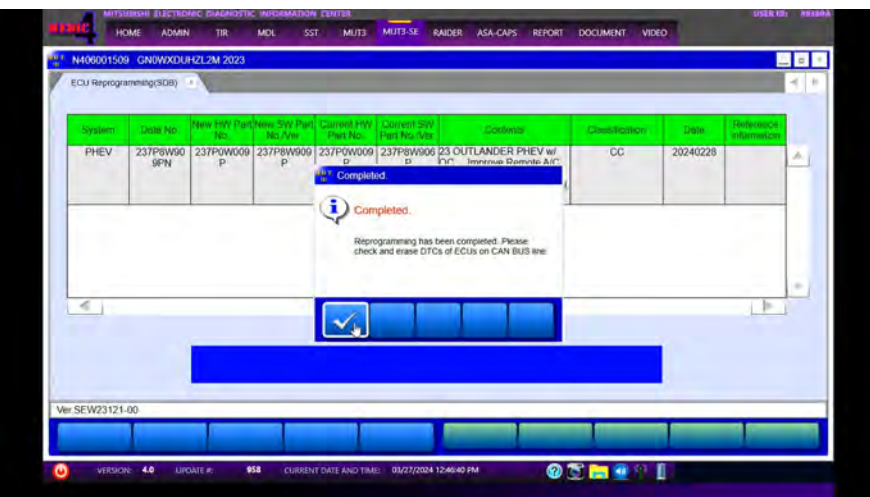
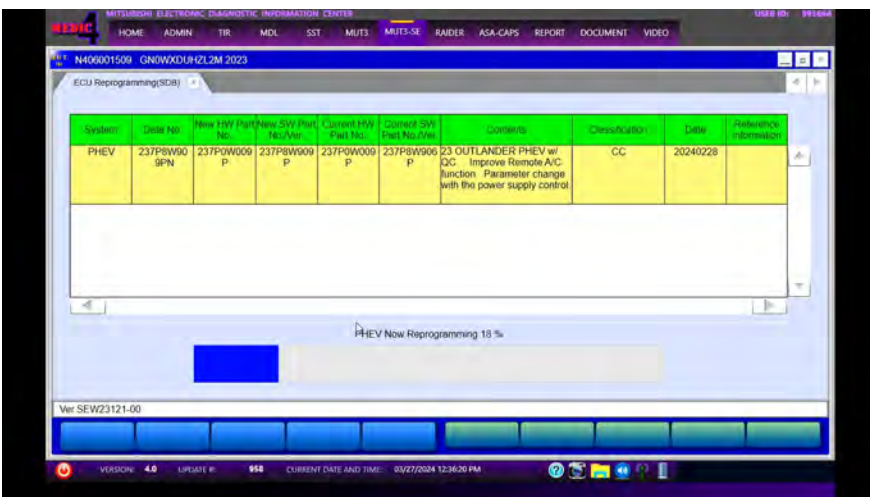
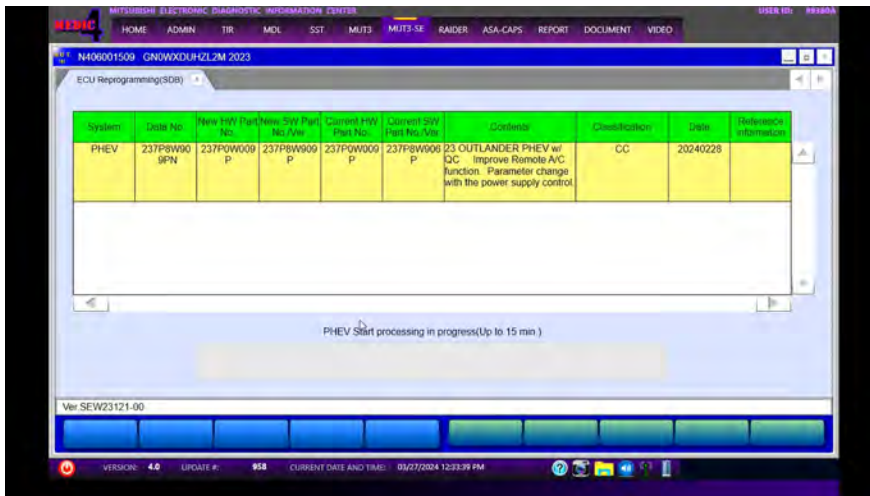
28. Verify the software, click the selection box and press OK to begin reprogramming.



29. HVAC2 processing may take up to 15 minutes to complete. A status bar will appear to show the progression. Press OK when complete.



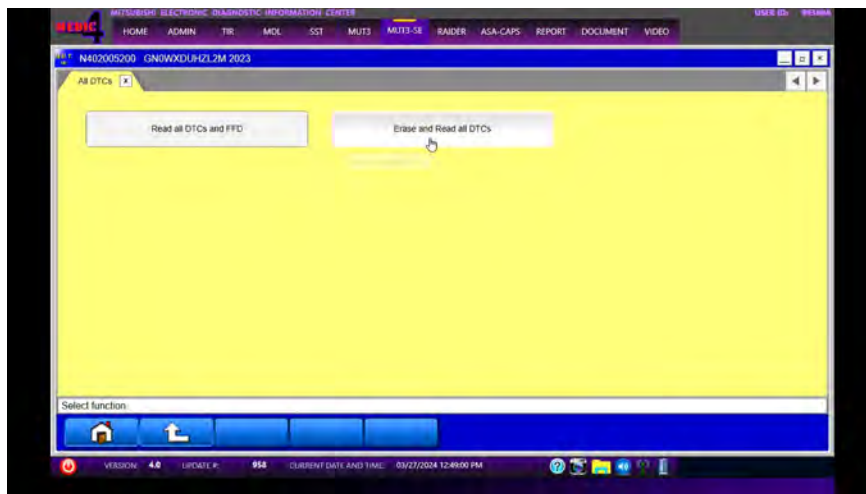
36. PHEV processing may take up to 15 minutes to complete. A status bar will appear to show the progression. Press OK when complete.



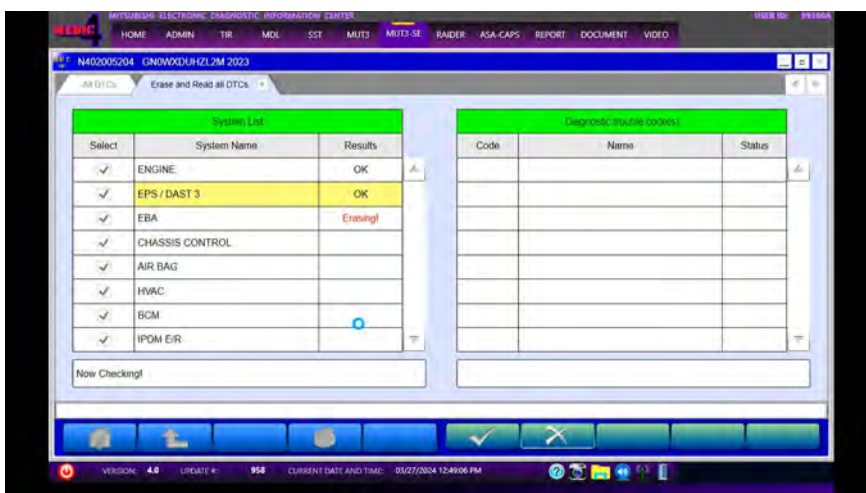
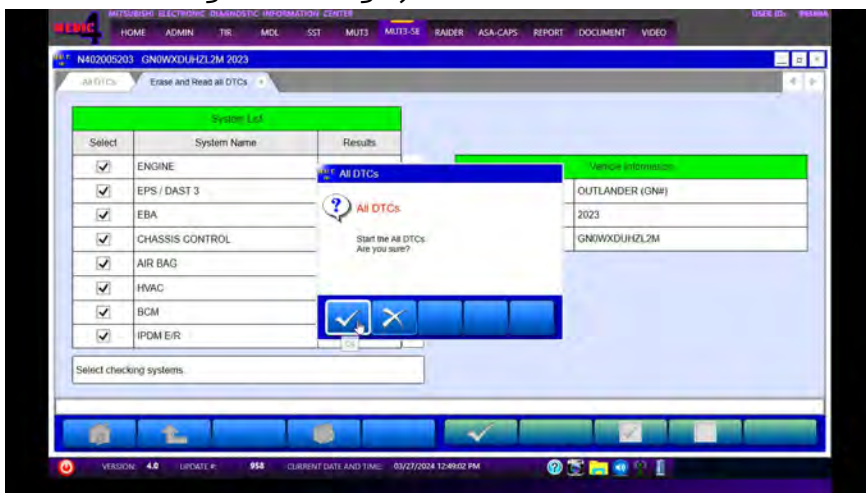
37. Press power switch without depressing the brake pedal and place the vehicle in IG-OFF mode for 10 seconds then turn IG-ON.

Press "ALL DTC" button to initiate the "Erase and Read all DTCs". Return to the System Select screen to select Erase and Read all DTCs . Select all systems from the list and press OK.

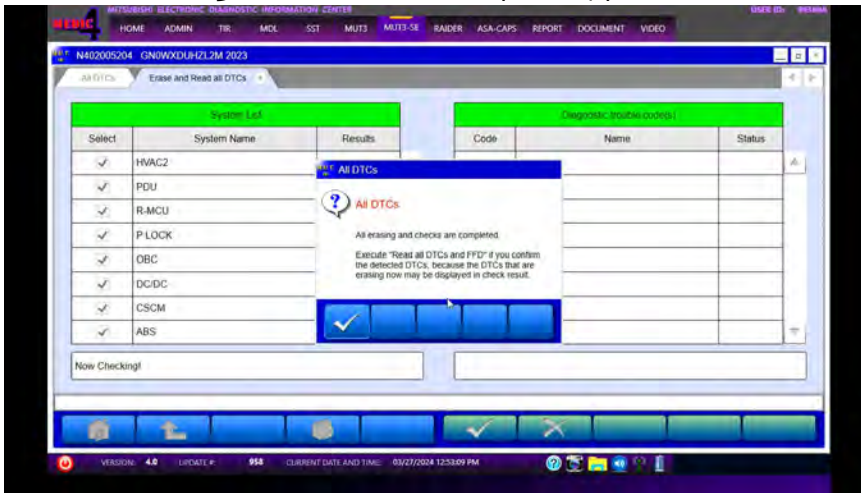
IMPORTANT: The "Erase and Read all DTCs" must be performed since DTCs may be generated and stored.



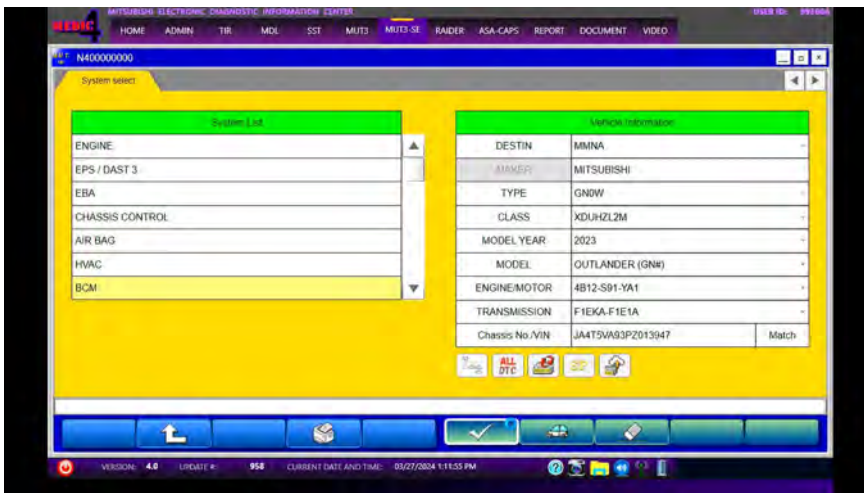
38. Press OK to begin checking systems.



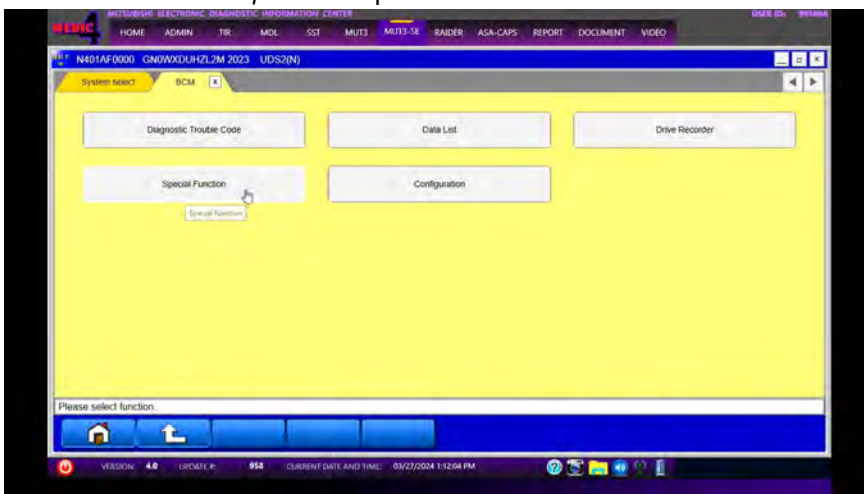
39. When all erasing and check are completed, press OK.



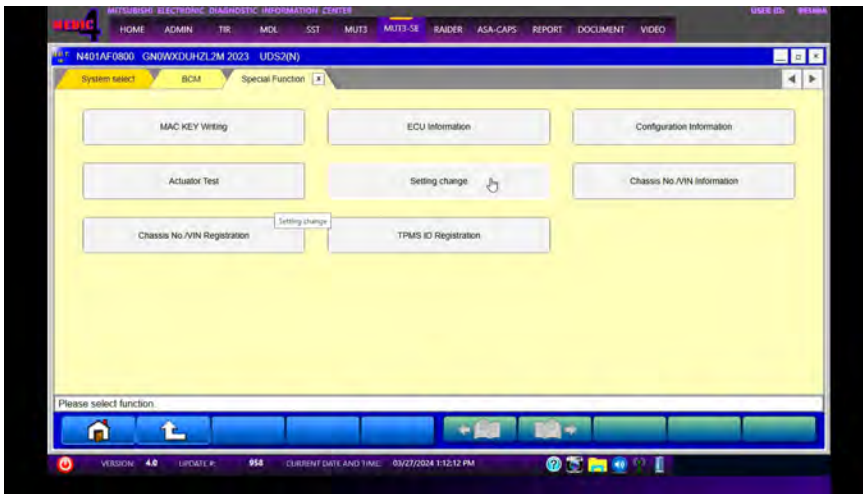
40. Select BCM from the System List and press OK.



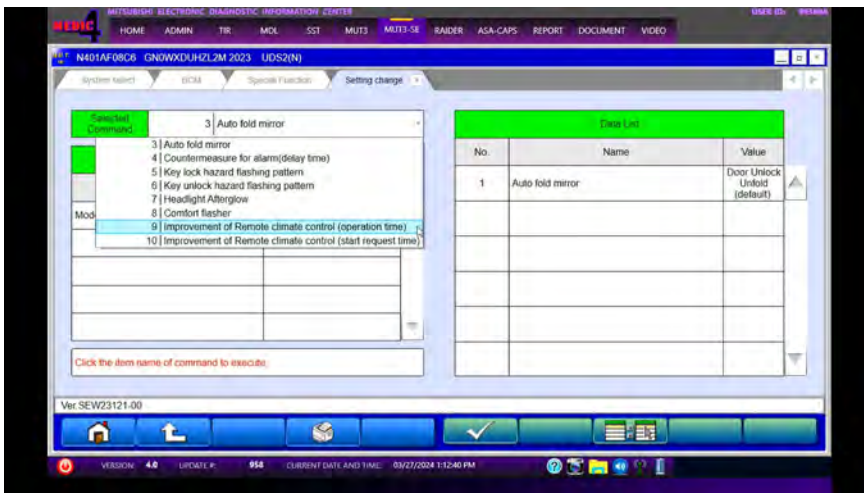
41. From the BCM tab, select Special Function.



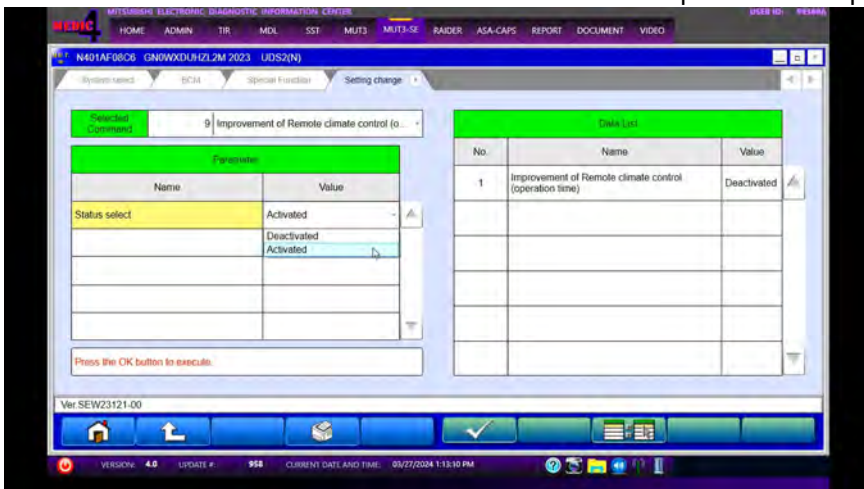
42. Press the Setting change button under the Special Function tab.

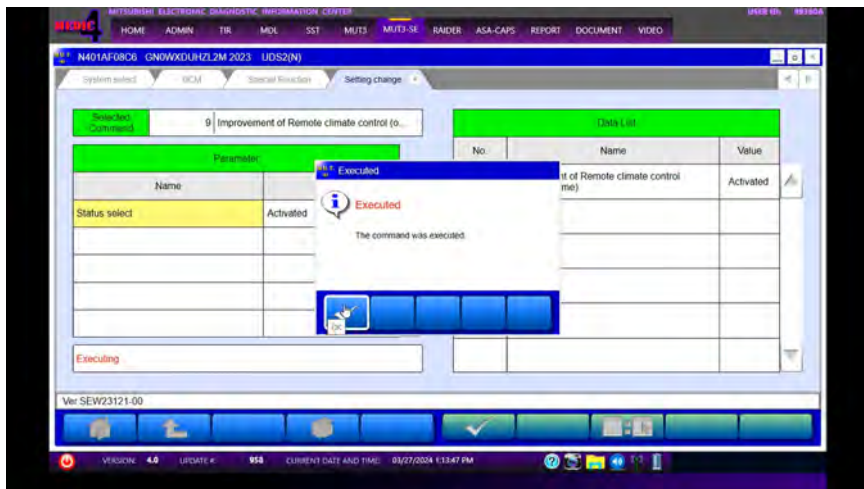
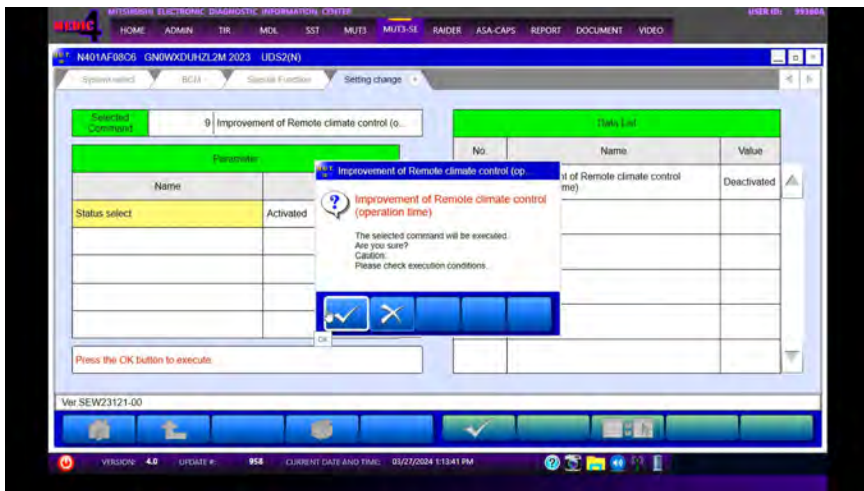
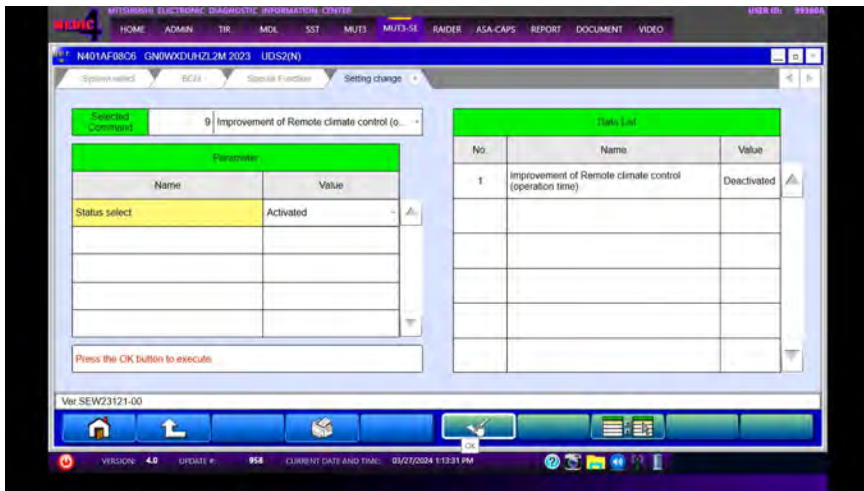


43. From the Setting change tab, choose Improvement of Remote climate control (operation time) from the Selected Command drop down.

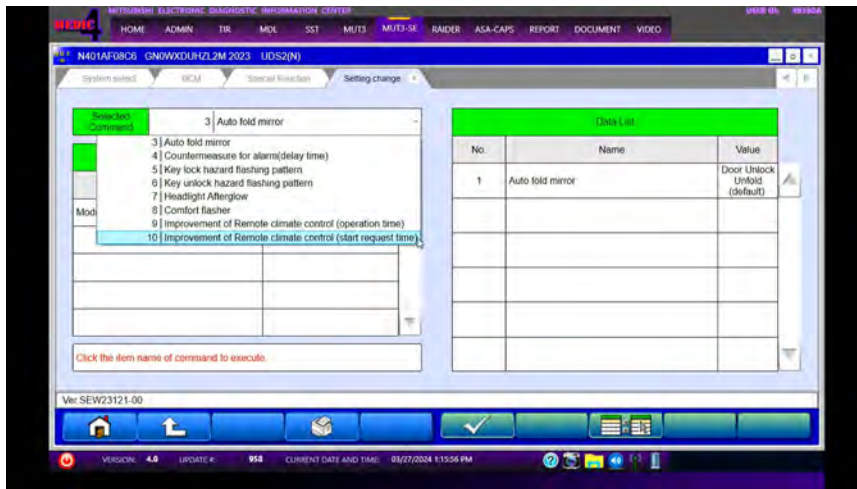


44. Select Activated from the Status select Value drop down and press the OK button.

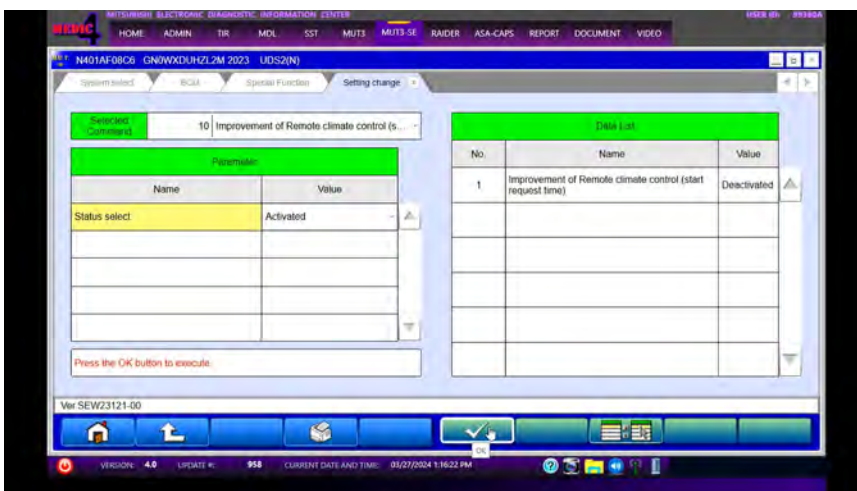
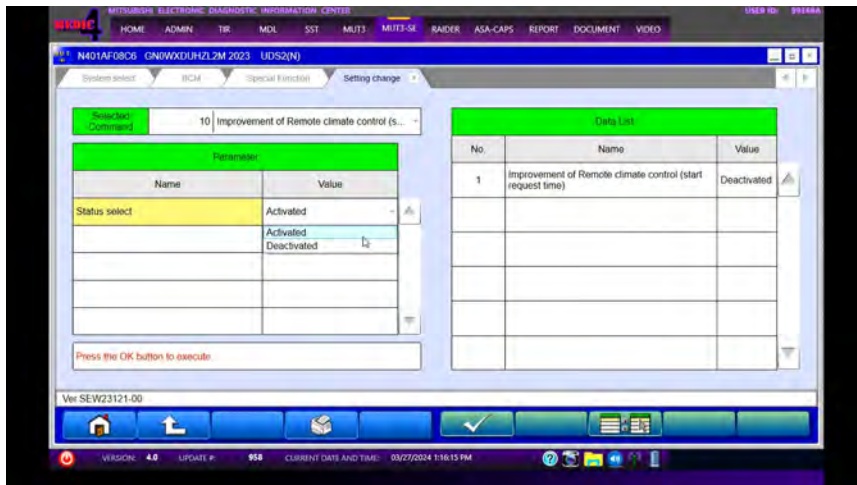


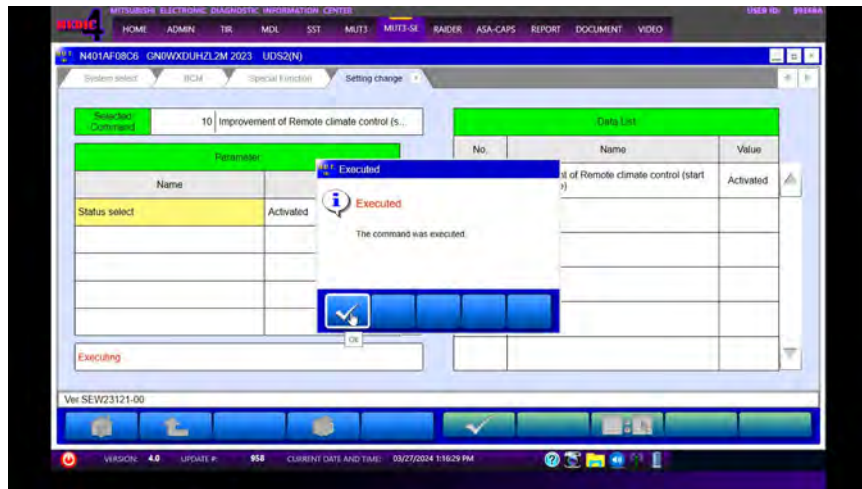
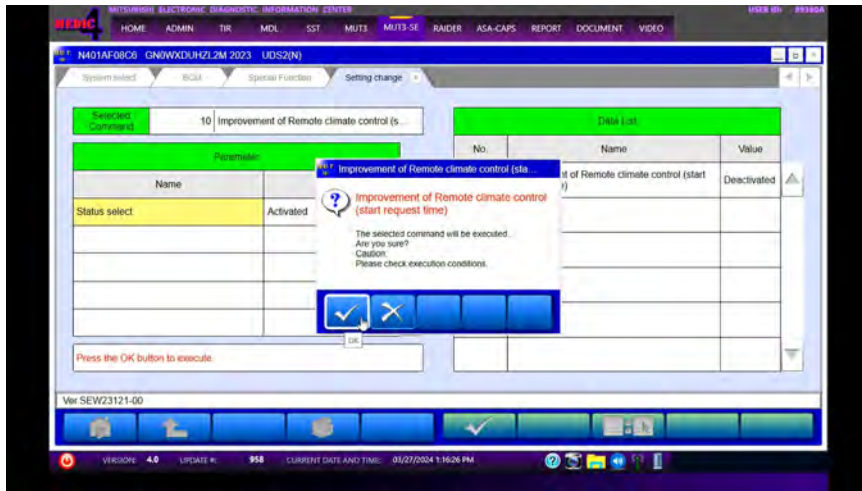


45. From the Setting change tab, choose Improvement of Remote climate control (start request time) from the Selected Command drop down.



46. Select Activated from the Status select Value drop down and press the OK button.





47. Using a ball-point pen, enter the appropriate ECU part number, Software Part Number (ROM ID#), this Technical Service Bulletin number, your dealer code, and the current date on the Engine Compartment/Control Module Label (p/n MSSF024G00). The Vendor Code is not applicable. The label is available from your facing PDC.



48. Test drive the vehicle to confirm proper operation and restore all customer presets if necessary.

SOFTWARE/PARTS INFORMATION

Refer to pages 13-14 of this bulletin.

WARRANTY

This bulletin is supplied as technical information only and is not an authorization to repair. If an affected vehicle is reported with the described condition, diagnose the condition, repair as described in this bulletin and submit a normal warranty claim using the information below.

Operation Code	Case	Operation	Quantity	Work Time
558500PG	①	A/C AMP replacement	1	1.7H
		POWER DRIVE UNIT reprogramming		
		REMCU reprogramming		
		PHEV A/C AMP reprogramming		
		ECM replacement (including reprogramming)	1	
		PHEV-ECU reprogramming		
558500PH	②	A/C AMP reprogramming		1.0H
		POWER DRIVE UNIT reprogramming		
		REMCU reprogramming		
		PHEV A/C AMP reprogramming		
		ECM replacement (including reprogramming)	1	
		PHEV-ECU reprogramming		
558500PJ	③	POWER DRIVE UNIT reprogramming		1.0H
		REMCU reprogramming		
		PHEV A/C AMP reprogramming		
		ECM replacement (including reprogramming)	1	
		PHEV-ECU reprogramming		
		BCM modify configuration on special function		
558500PK	④	REMCU reprogramming		0.9H
		PHEV A/C AMP reprogramming		
		ECM replacement (including reprogramming)	1	
		PHEV-ECU reprogramming		
		BCM modify configuration on special function		
558500PL	⑤	PHEV A/C AMP reprogramming		0.9H
		ECM replacement (including reprogramming)	1	
		PHEV-ECU reprogramming		
		BCM modify configuration on special function		
558500PM	⑥	ECM replacement (including reprogramming)	1	0.8H
		PHEV-ECU reprogramming		
		BCM modify configuration on special function		
558500PN	⑦	PHEV-ECU reprogramming		0.4H
		BCM modify configuration on special function		
558500PP	⑧	BCM modify configuration on special function		0.3H



NOTIFICATION OF REMOTE CLIMATE CONTROL FUNCTION UPDATE

Thank you for purchasing a Mitsubishi Outlander Plug-in Hybrid. Mitsubishi Motors Corporation would like to announce updated information for the REMOTE CLIMATE CONTROL function, explain the changes, advise how to operate the APP and provide important caution information.

- After the update, the engine will start when using the REMOTE CLIMATE CONTROL function when outside temperatures are 5 ° F or below in order to have optimal heating performance
- Operation time of REMOTE CLIMATE CONTROL when engine starts is approximately 10 minutes
- The REMOTE CLIMATE CONTROL (if engine starts) is limited to two times (without driving the vehicle). After driving the vehicle, you may use the REMOTE CLIMATE CONTROL again.
 - These conditions of operation time and the number of times of use are designed with consideration to the reduction of fuel consumption and risk of poisoning from exhaust fumes
- Please update My Mitsubishi CONNECT APP to the latest version (Adding message: "there might be engine starts when outside temperature is cold by using REMOTE CLIMATE CONTROL")
 - Android: v2.58.30 or later
 - IOS: v2.58.7 or later

HOW TO USE APP

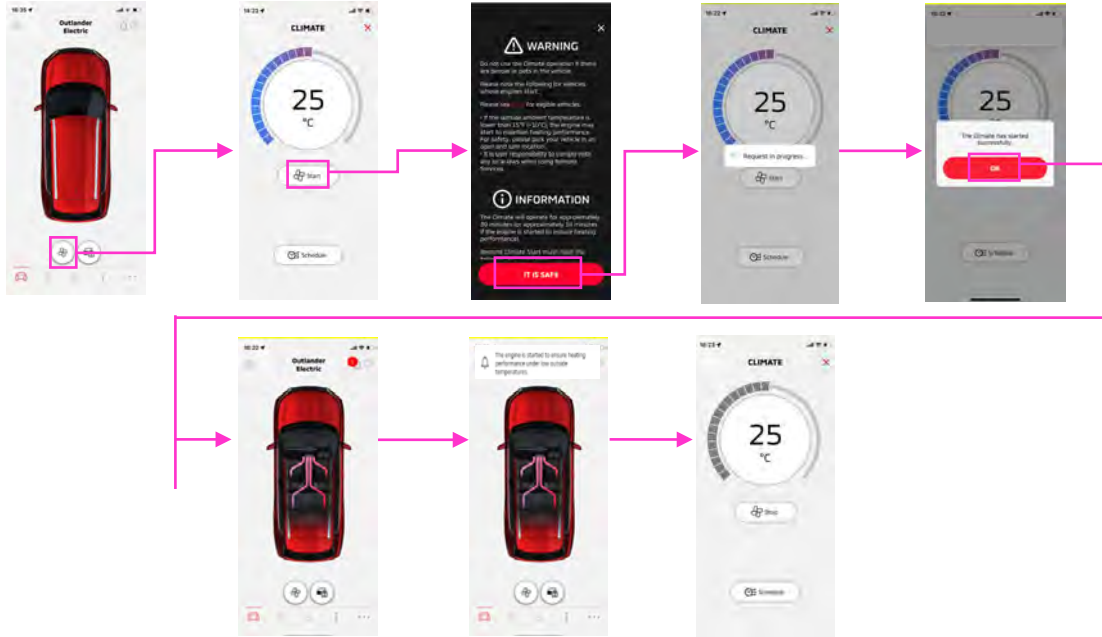
- There is no change from old version
- Vehicle will judge automatically if engine starts or not when outside temperature is low
 - > Tap fan icon
 - > Tap the [Start] button
 - > Read "WARNING·INFORMATION" and tap [IT IS SAFE] button
 - > Make sure to tap [IT IS SAFE] button after reading "WARNING·INFORMATION"
- Following Push Notification will send to the smartphone when the engine starts depending on the push notification of your smartphone.
[The engine is started to ensure heating performance due to low outside temperatures.]

*If Push notification setting is turned OFF on smartphone side, notification will not deliver.

- When you want to stop the engine, you can stop the engine by steps below.
 - > Tap Fun icon

HOW TO USE APP (Continued)

> Tap [Stop] button.



SAFETY CAUTIONS

Please use this REMOTE CLIMATE CONTROL function under safe conditions and in a safe place because engine will start under low temperature.

Garages and indoor parking areas can be filled with exhaust fumes, which can lead to exhaust poisoning.

- Do not park the vehicle near flammable items, there is risk of fire
- Do not use a body cover, there is risk of fire

LEGAL CAUTION

Use the REMOTE CLIMATE CONTROL function according to the state or local regulations regarding idling vehicles.

Notification of Owner's Manual (Smartphone connection) Change

Thank you for purchasing a Mitsubishi OUTLANDER Plug-in Hybrid. Mitsubishi Motors Corporation has modified the Owner's manual (Smartphone connection) outlined in the red box. Please review the information below and insert this sheet into the Owner's manual.

4. Unique Plug-in Hybrid EV functions (if so equipped)

- Some smartphones are not compatible with this system and cannot be used to check the drive battery charging status. Confirm this beforehand.
- When using remote climate control, the engine will start for vehicle compartment heating when outside temperature is low.
- Use the remote climate control according to the state or local regulations regarding idling vehicles.
- Air conditioning is limited to the capacity of the drive battery. Therefore, the temperature may not reach a comfortable level due to performance of the air conditioning being limited, if the outside temperature is excessively high or low.
- If the electric motor switch is in the ON position, while the remote climate control is being operated, remote climate control operation is automatically stopped.

Operating tips

- Remote climate control operates using drive battery power.
- Remote climate control can be operated for a maximum of 30 minutes.
- The remote climate control will only start to operate when the electric motor switch is in the OFF position. Be sure to check that the electric motor switch is in the OFF position.
- Remote climate control operation is not available when the vehicle is outside the area of cellular communication range.
- Communication becomes unavailable when the vehicle is not used for two weeks or more. When the electric motor switch is placed in the ON position, communication with the MITSUBISHI CONNECT Data Center can be restored.

Notification of Owner's Manual (Smartphone connection) Change

Thank you for purchasing a Mitsubishi OUTLANDER Plug-in Hybrid. Mitsubishi Motors Corporation has modified the Owner's manual (Smartphone connection) outlined in the red box. Please review the information below and insert this sheet into the Owner's manual.

10. Troubleshooting Guide

TIMER FUNCTION

Symptom	Possible cause	Possible solution
Charging does not start at the time set.	Timer charge has not been set to ON.	Check on the timer charge screen whether the indicator for the timer charge is turned on.
	The EV charging cable is not connected correctly.	Check that the EV charging cable is connected correctly.
	The immediate charge switch is in the ON position.	Check the immediate charge switch setting.
	The electric motor switch is in the ON position.	Place the electric motor switch in the OFF position when setting timer charge.
The air conditioning or heater does not operate at the time set.	The Climate Control Timer is not set to ON.	On the Climate Control Timer screen, check whether the Climate Control Timer indicator is on.
	The Climate Control Timer operates only when remaining drive battery power displayed in the meter is more than 1 segment.	Charge the drive battery so that the remaining drive battery power displayed in the meter is more than 1 segment and then, operate the Climate Control Timer. When in the remote climate control, the timer may operate even if the remaining drive battery power displayed in the meter is 0 segment.
	The electric motor switch is in the ON position.	Place the electric motor switch in the OFF position when setting timer charge.
	The shift lever is out of the P (Park) position.	Make sure the shift position is in P (Park) position.
The temperature inside the vehicle is not warmed even if the air conditioner starts operating with the Climate Control Timer or remote climate control.	Outside temperature is low.	When the outside temperature is low or when snowing, heating may not work well and the temperature inside the vehicle may not reach the set temperature.