

TECHNICAL SERVICE BULLETIN

Classification: DA19-012E	Reference: ITB19-013E	Date: April 12, 2024
------------------------------	--------------------------	-------------------------

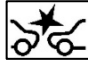

AUTOMATIC EMERGENCY BRAKING WARNING LIGHT BLINKING

This bulletin has been amended. See AMENDMENT HISTORY on the last page.
Please discard previous versions of this bulletin.

APPLIED VEHICLES:	2015-2024 Q50 (V37)	2022-2024 QX55 (FJ55)
	2015-2018 Q50 Hybrid (HV37)	2015-2021 QX60 (L50)
	2017-2022 Q60 (CV37)	2022-2024 QX60 (L51)
	2015-2019 Q70 (Y51)	2015-2019 QX60 Hybrid (L50H)
	2015-2018 Q70 Hybrid (HY51)	2015-2024 QX80 (Z62)
	2019-2024 QX50 (J55)	

APPLIED SYSTEMS: Vehicles equipped with a lane camera (see Figure 1)

SERVICE INFORMATION

If the Automatic Emergency Braking (AEB) warning light  or  is blinking (but not illuminated steadily) or the client states it is blinking, and there are no related DTCs, inspect the windshield.

A blinking AEB warning light may occur under the following conditions:

- When contamination or foreign material adhere to the lane camera viewing window on the windshield.
- When driving while it is snowing or when frost forms on the lane camera viewing window on the windshield.
- When the lane camera viewing window on the windshield is temporarily fogged up.

HINT:

- Refer to the applicable ESM for diagnosis if DTCs are present in any of the following related systems:
 - Laser/Radar
 - ICC/ADAS
 - Lane Camera
- Refer to the following pages for further information.

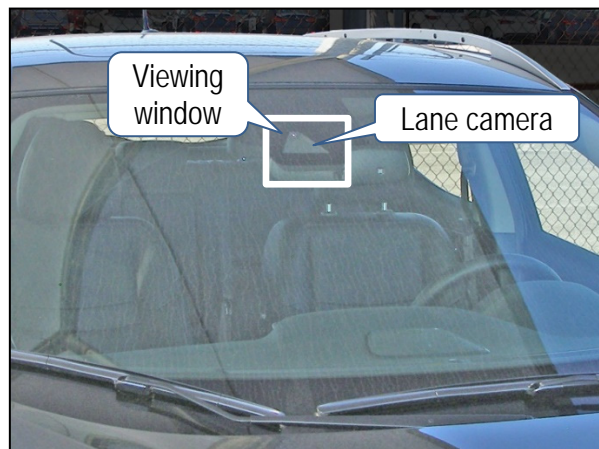
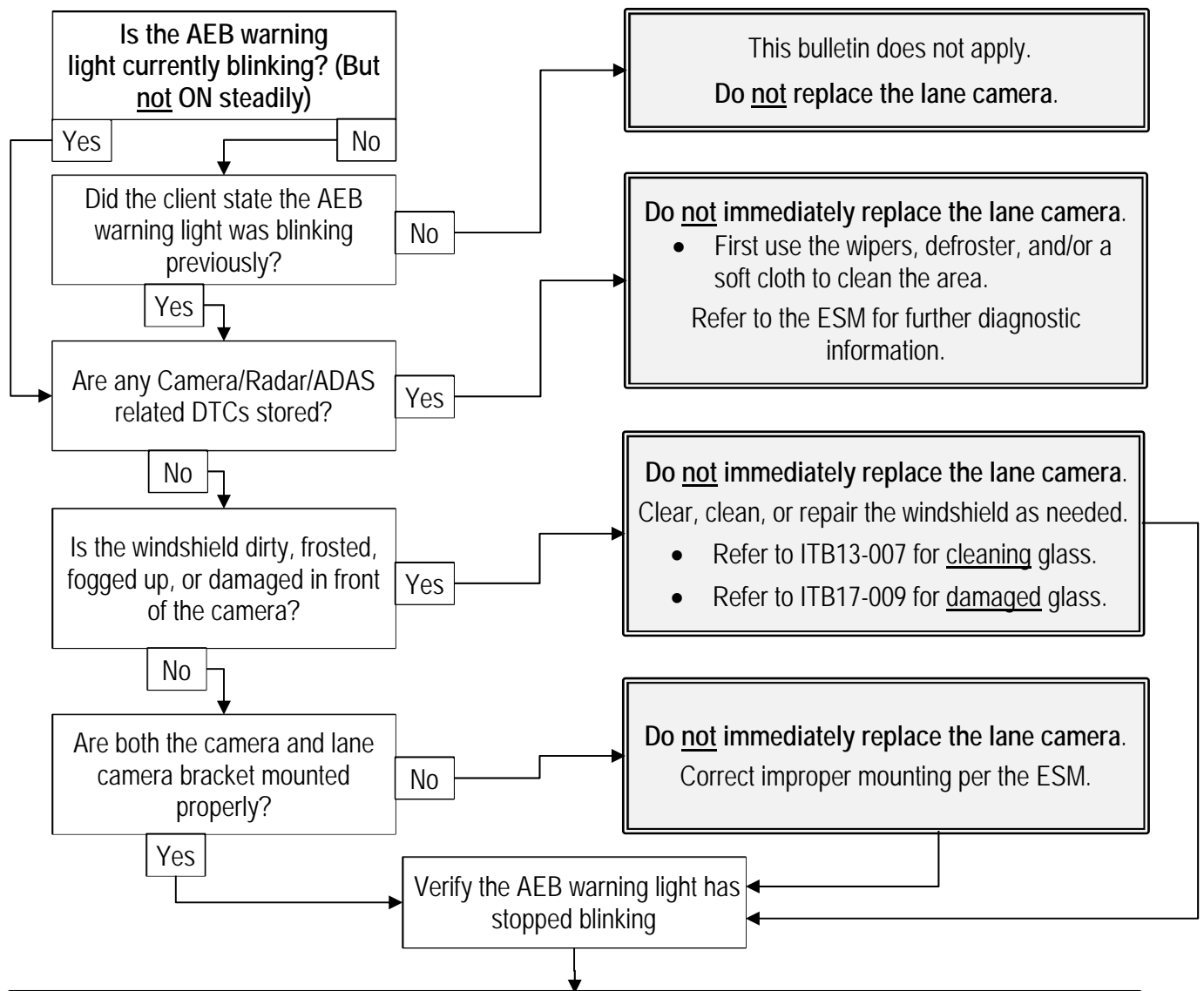


Figure 1

Infiniti Bulletins are intended for use by qualified technicians, not 'do-it-yourselfers'. Qualified technicians are properly trained individuals who have the equipment, tools, safety instruction, and know-how to do a job properly and safely. **NOTE:** If you believe that a described condition may apply to a particular vehicle, DO NOT assume that it does. See your Infiniti retailer to determine if this applies to your vehicle.

FLOW CHART



Inform the client the following conditions may cause the AEB warning light to blink:

- Heavy rain or thick fog may cause the light to blink. Good use of wipers and keeping the windshield clean will mitigate some of the issue.
- When contamination or foreign material adhere to the lane camera viewing window on the windshield.
- When driving while it is snowing or when frost forms on the lane camera viewing window on the windshield.
- When the lane camera viewing window on the windshield is temporarily fogged up

Explain to the client the difference between contamination detection and a malfunction.

During the following conditions, the AEB warning light may blink/flash. However when these conditions no longer exist, the AEB will resume automatically:

- Strong light is shining from over the front of the vehicle.
- The cabin temperature is over approximately 104°F (40°C) in direct sunlight.
- The radar sensor picks up interference from another radar source.
- When driving on roads without any road structures or buildings (for example: long bridges, deserts, snow fields, driving next to long walls).

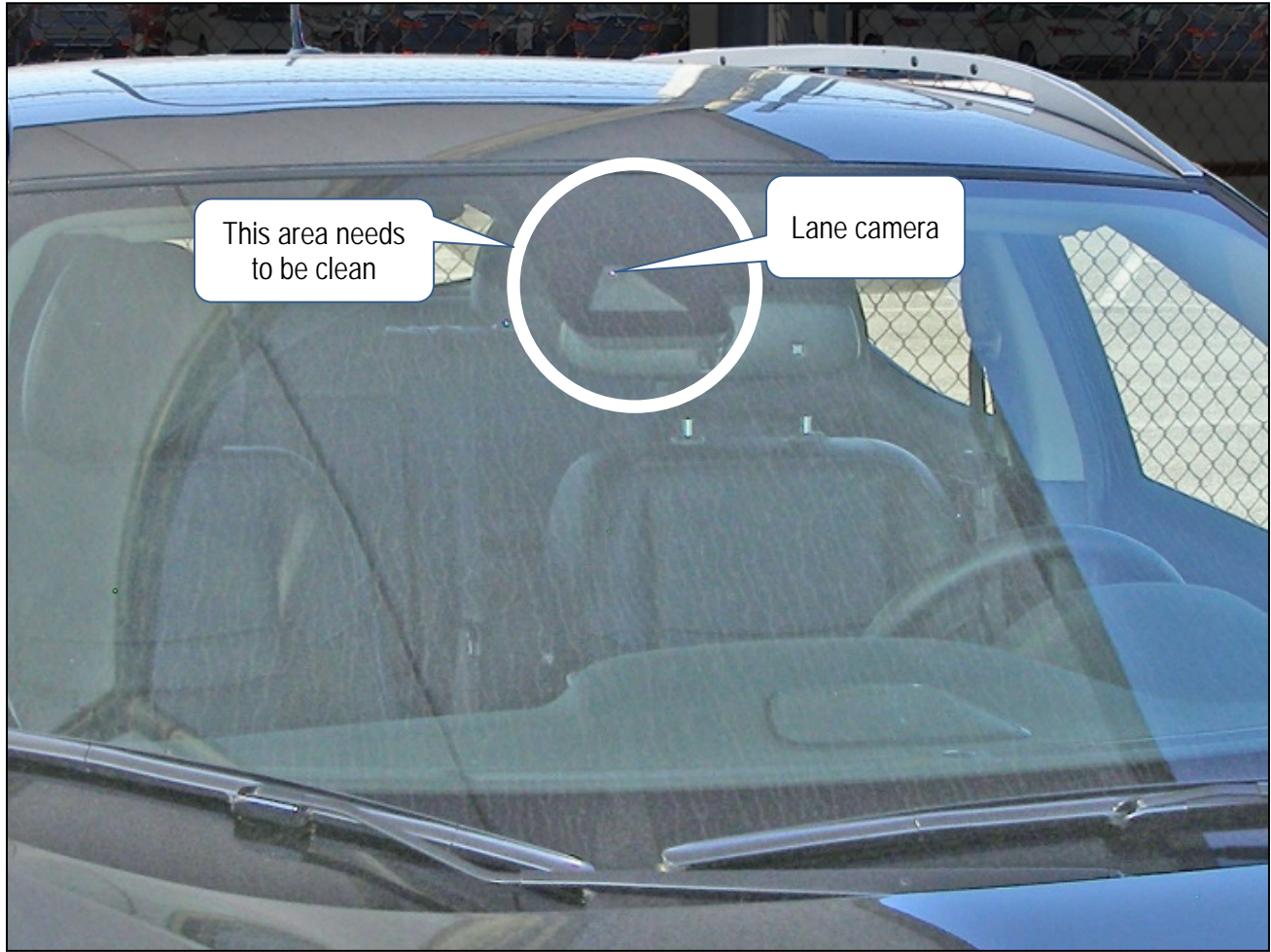


Figure 2

AMENDMENT HISTORY

PUBLISHED DATE	REFERENCE	DESCRIPTION
May 22, 2019	ITB19-013	Original bulletin published
November 5, 2020	ITB19-013a	APPLIED VEHICLES updated
February 3, 2021	ITB19-013b	Classification number updated
January 26, 2022	ITB19-013C	APPLIED VEHICLES updated
March 9, 2023	ITB19-013D	APPLIED VEHICLES updated, and "NOTE" references changed to "HINT"
April 12, 2024	ITB19-013E	APPLIED VEHICLES updated