


# RCA-90-23-001-1: Install New Seals onto Portable Charger

Rivian is initiating a customer satisfaction campaign for portable chargers that were supplied with some model year 2022 and 2023 R1T and R1S vehicles. These portable chargers may be susceptible to corrosion on the charging pins, preventing the portable charger from charging the vehicle. Rivian will test the portable charger and either replace it or install additional seals to prevent future corrosion. Rivian is launching this campaign for customer satisfaction and to ensure the quality of Rivian vehicles.

<b>Document Type</b>	Customer Satisfaction Campaign Bulletin
<b>Date</b>	May 8, 2024
<b>Affected Region(s)</b>	USA, Canada
<b>Affected Model(s)</b>	R1T, R1S
<b>Model Year(s)</b>	2022 - 2023
<b>Approximate Build Dates</b>	August 2021 - September 2023
 Refer to <b>Open Containments</b> in ServiceOS to determine if this document applies to a specific vehicle.	
<b>Vehicle System</b>	90 - External Charging Equipment
<b>Minimum Service Location</b>	Mobile

## Potentially Required Parts

Part Number	Quantity	Engineering Name	Service Name/Notes
PT00045331-H	1	EVSE STORED ASSY - LEVEL 1 AND 2 PORTABLE	Portable Charger Kit
PT00874539-A	1	PORTABLE CHARGER NEMA SOCKET SEALS SERVICE KIT	Seal Kit, Portable Charger Plug

**!** **Attention:** The parts listed in this table are only for unique steps that are called out in this bulletin. Some sections of this bulletin might refer to Service Manual procedures which require additional parts. Always review the bulletin and all potentially related Service Manual procedures before ordering parts and beginning work.

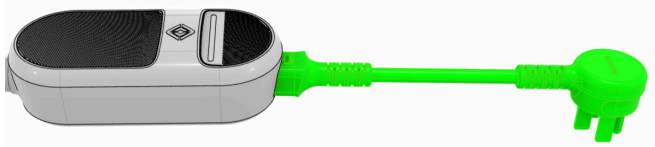
## Potentially Required Special Tools:

Tool Number	Tool Name
TSN01104	Seal Insertion Tool, Portable Charger

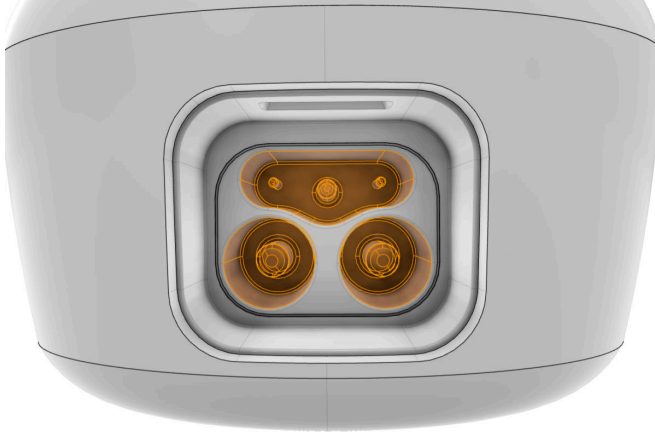
**!** **Attention:** The special tools listed in this table are only for unique steps that are called out in this bulletin. Some sections of this bulletin might refer to Service Manual procedures which require additional special tools. Always review the bulletin and all potentially related Service Manual procedures before beginning work.

## Procedure

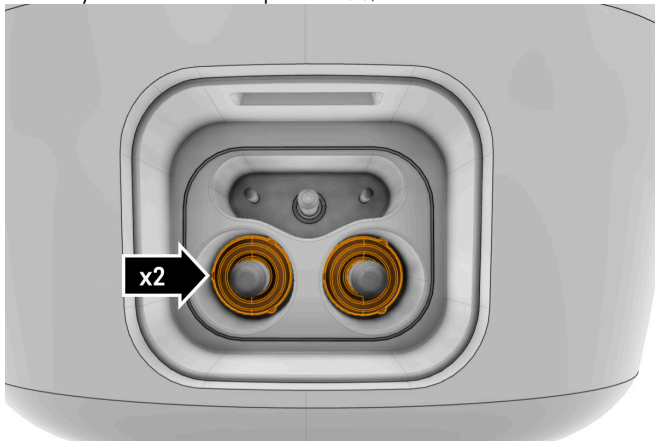
1. Use the portable charger to charge the vehicle for 3 minutes.
  - If the portable charger cannot charge the vehicle: Replace: Portable Charger Kit. No additional work is required.
  - If the portable charger charges the vehicle as expected: Continue to the next step.
2. Disconnect the charge plug from the vehicle.
- 3.



4. If necessary: Clean the highlighted area(s). Use alcohol wipes or rubbing alcohol on a clean cloth.

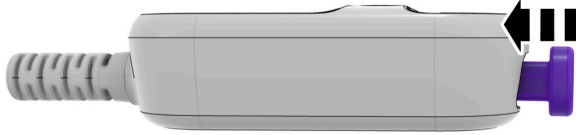


5. Partially install the component(s), as shown.



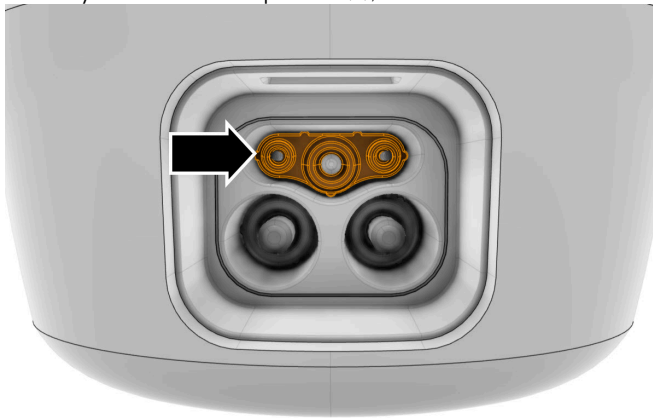
6.

a. Using the special tool:



b. Make sure that the component(s) are fully seated.

7. Partially install the component(s), as shown.



8.

a. Using the special tool:



b. Make sure that the component(s) are fully seated.

9. Make sure that all portable charging equipment is returned to the customer.

## Labor Codes

Labor Code	Description
RCA902300100	RCA-90-23-001 not applicable
RCA902300101	Replace portable charger kit
RCA902300102	Clean portable charger pins and install 3 new seals
Contact <a href="mailto:ServiceDocumentFeedback@rivian.com">ServiceDocumentFeedback@rivian.com</a> regarding labor codes and document content.	