

Brake System symptom - Cracked or Torn Brake Hose on the Left or Right Front Axle (SY 137/23)

Change Overview:

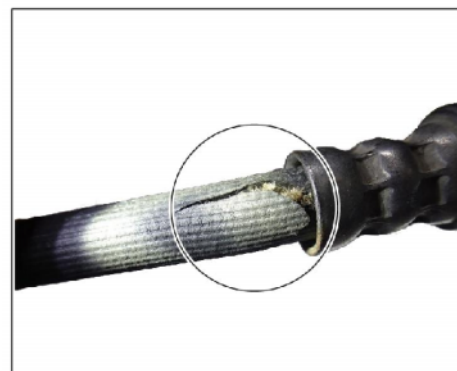
Version	Date	Change
0	10/03/2023	• First publication
1	05/30/2024	• Update of process documentation under Labor position and PCSS encryption

Model Year: **As of 2020**

Model Line: **Taycan (Y1A / Y1B / Y1C)**

Concerns: **Front axle brake hoses**

Symptom: A cracked or torn brake hose is detected on the left or right front axle. ⇒ *Example of crack in brake hose*



Example of crack in brake hose

Remedial Action: In the event of a crack or split in a brake hose on the front axle, first create a vehicle analysis log (VAL) before repair and then replace both brake hoses on the front axle.

Required parts and materials

Parts Info:	Part No.	Designation – Location of use	Number
-------------	-----------------	---	---------------

Required parts for vehicles with front disc brake, standard (M-No. 1LS):

9J1611707C ⇒ Brake hose, front left 1 piece
 – Sport Turismo (M-No. K8D)
 or
 – Sports sedan (M-No. K8S)

9J1611708C ⇒ Brake hose, front right 1 piece
 – Sport Turismo (M-No. K8D)
 or
 – Sports sedan (M-No. K8S)

or

9J0611707 ⇒ Brake hose, front left 1 piece
 – Cross Turismo (M-No. K8X)

9J0611708 ⇒ Brake hose, front right 1 piece
 – Cross Turismo (M-No. K8X)

Required parts for vehicles with front disc brake PSCB (M-No. 1LZ):

9J1611707B ⇒ Brake hose, front left 1 piece
 Up to model year 2021
 – Sport Turismo (M-No. K8D)
 or
 – Sports sedan (M-No. K8S)

9J1611708B ⇒ Brake hose, front right 1 piece
 Up to model year 2021
 – Sport Turismo (M-No. K8D)
 or
 – Sports sedan (M-No. K8S)

or

9J1611707F ⇒ Brake hose, front left 1 piece
 As of model year 2021
 – Sport Turismo (M-No. K8D)
 or
 – Sports sedan (M-No. K8S)

9J1611708F ⇒ Brake hose, front right 1 piece
 As of model year 2021
 – Sport Turismo (M-No. K8D)
 or
 – Sports sedan (M-No. K8S)

or

9J0611707A ⇒ Brake hose, front left 1 piece
– Cross Turismo (M-No. K8X)

9J0611708A ⇒ Brake hose, front right 1 piece
– Cross Turismo (M-No. K8X)

Required parts for vehicles with front disc brake PCCB (M-No. 1LQ):

9J1611707B ⇒ Brake hose, front left 1 piece
– Sport Turismo (M-No. K8D)
or
– Sports sedan (M-No. K8S)

9J1611708B ⇒ Brake hose, front right 1 piece
– Sport Turismo (M-No. K8D)
or
– Sports sedan (M-No. K8S)

or

9J0611707B ⇒ Brake hose, front left 1 piece
– Cross Turismo (M-No. K8X)

9J0611708B ⇒ Brake hose, front right 1 piece
– Cross Turismo (M-No. K8X)

Materials: **Required materials** (usually already available in the Porsche Center)

Part No.	Designation	Quantity
00004321086	⇒ Brake fluid (30-liter/ 7.9 gal container)	As required

Required tools

- Tools:
- Brake filling and bleeding equipment, e.g. **VAS 6860 - brake filling and bleeding equipment**
 - **P90999 - PIWIS Tester 4**
 - Battery charger with a current rating of **at least 90 A**, e.g. **VAS 5908 - battery charger 90 A**. For further information about the battery chargers to be used, see the corresponding Workshop Manual. ⇒ *Workshop Manual '270689 Charge 12-volt lithium-ion vehicle electrical system battery'*

Preliminary work

Work Procedure: 1 Create the vehicle analysis log (VAL) before repair using the PIWIS Tester. Mark the created vehicle analysis log with the attribute **"Pre-VAL"** and then trace it with the PIWIS tester.

- 2 Move the vehicle onto a lifting platform and raise it.
⇒ *Workshop Manual '4X00IN Lift vehicle'*
- 3 Remove front wheels.
⇒ *Workshop Manual '440519 Remove and install wheel'*

Replacing front axle brake hoses



WARNING

Danger of injury and damage from brake fluid!

- **Poisonous if swallowed!**
 - **Irritation and damage to skin**
 - **Avoid contact with paint surfaces**
- ⇒ **Store brake fluid in suitable, labelled containers only**
- ⇒ **Wear protective gloves and goggles**
- ⇒ **In the event of contact (eyes or skin), wash immediately with water**
- ⇒ **In the event of contact with paint surfaces, wash off immediately with water - do not wipe off**



Information

To gain better access for removing the brake hoses, turn the steering fully either to the left or right.



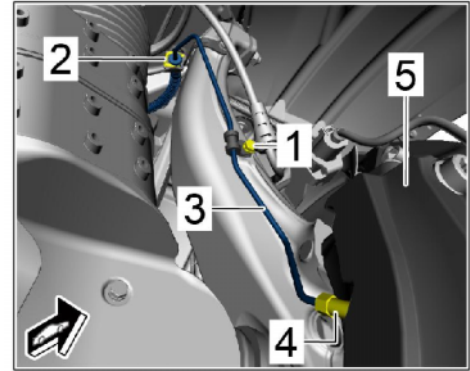
Information

The procedure for removing and installing is shown for one side as an example. The procedure for removing and installing for the other side is almost identical.

Work

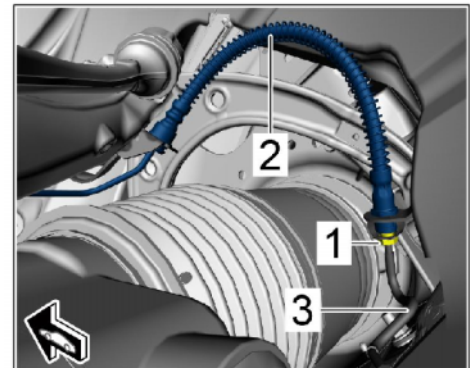
Procedure:

- 1 Loosen brake line on front axle.
 - 1.1 Unscrew screw ⇒ *Front brake line on brake calliper -1-*. Remove loosened holder and install it on **new** brake line.
 - 1.2 Unclip spring clamp ⇒ *Front brake line on brake calliper -2-* and disengage brake line ⇒ *Front brake line on brake calliper -3-* from holder at the top.
 - 1.3 Loosen and unscrew union nut for the brake line ⇒ *Front brake line on brake calliper -4-* on the brake calliper ⇒ *Front brake line on brake calliper -5-*.
 - 1.4 Remove brake line ⇒ *Front brake line on brake calliper -3-* and close line connections with suitable stoppers while collecting leaking brake fluid using a suitable container.



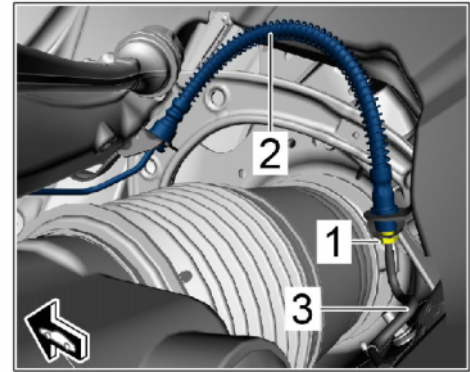
Front brake line on brake calliper

- 2 Remove front brake hose.
 - 2.1 Loosen and unscrew union nut ⇒ *Front brake hose on vehicle-side brake line -1-* on vehicle-side brake line ⇒ *Front brake hose on vehicle-side brake line -3-* to brake hose ⇒ *Front brake hose on vehicle-side brake line -2-*.
 - 2.2 Pull off brake hose ⇒ *Front brake hose on vehicle-side brake line -2-* and close line connections with suitable stoppers while collecting leaking brake fluid using a suitable container.
 - 2.3 Guide out brake hose ⇒ *Front brake hose on vehicle-side brake line -2-*.



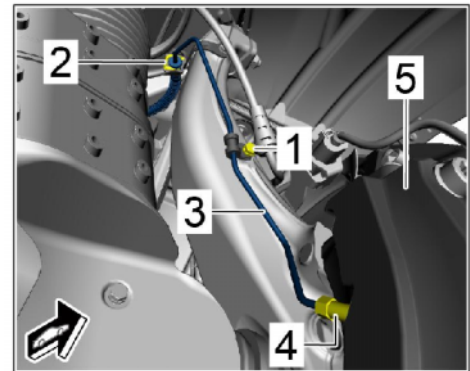
Front brake hose on vehicle-side brake line

- 3 Install **new** brake hose.
 - 3.1 Insert brake hose ⇒ *Front brake hose on vehicle-side brake line -2-* into the vehicle.
 - 3.2 Push brake hose ⇒ *Front brake hose on vehicle-side brake line -2-* onto vehicle-side brake line ⇒ *Front brake hose on vehicle-side brake line -3-*.
 - 3.3 Screw on union nut ⇒ *Front brake hose on vehicle-side brake line -1-* securing the vehicle-side brake line ⇒ *Front brake hose on vehicle-side brake line -3-*.



Front brake hose on vehicle-side brake line

- 4 Position front axle brake line.
 - 4.1 Attach brake line ⇒ *Front brake line on brake calliper -3-* into the top holder and position on the brake calliper ⇒ *Front brake line on brake calliper -5-*.
 - 4.2 Screw on union nut ⇒ *Front brake line on brake calliper -4-*.
 - 4.3 Position center holder for brake line and tighten screw ⇒ *Front brake line on brake calliper -1-*.
 - 4.4 Clip in spring clamp ⇒ *Front brake line on brake calliper -2-*.



Front brake line on brake calliper

- 5 Fasten brake hose.
 - 5.1 Tighten union nut securing vehicle-side brake line with **tightening torque 14 Nm (10.3 ftlb.)**, do not twist brake line.
 - 5.2 Tighten union nut securing brake calliper with **tightening torque 14 Nm (10.3 ftlb.)**, do not twist brake line.
 - 5.3 Tighten screw securing center holder with **tightening torque 8 Nm (5.9 ftlb.)**.
- 6 Repeat work procedure for front axle brake hose on the opposite side.

Follow-up actions

- Work Procedure: 1 Bleed the brake system.
⇒ *Workshop Manual '470107 Bleed the brake system'*
- 2 Install front wheels.
⇒ *Workshop Manual '440519 Remove and install wheel'*

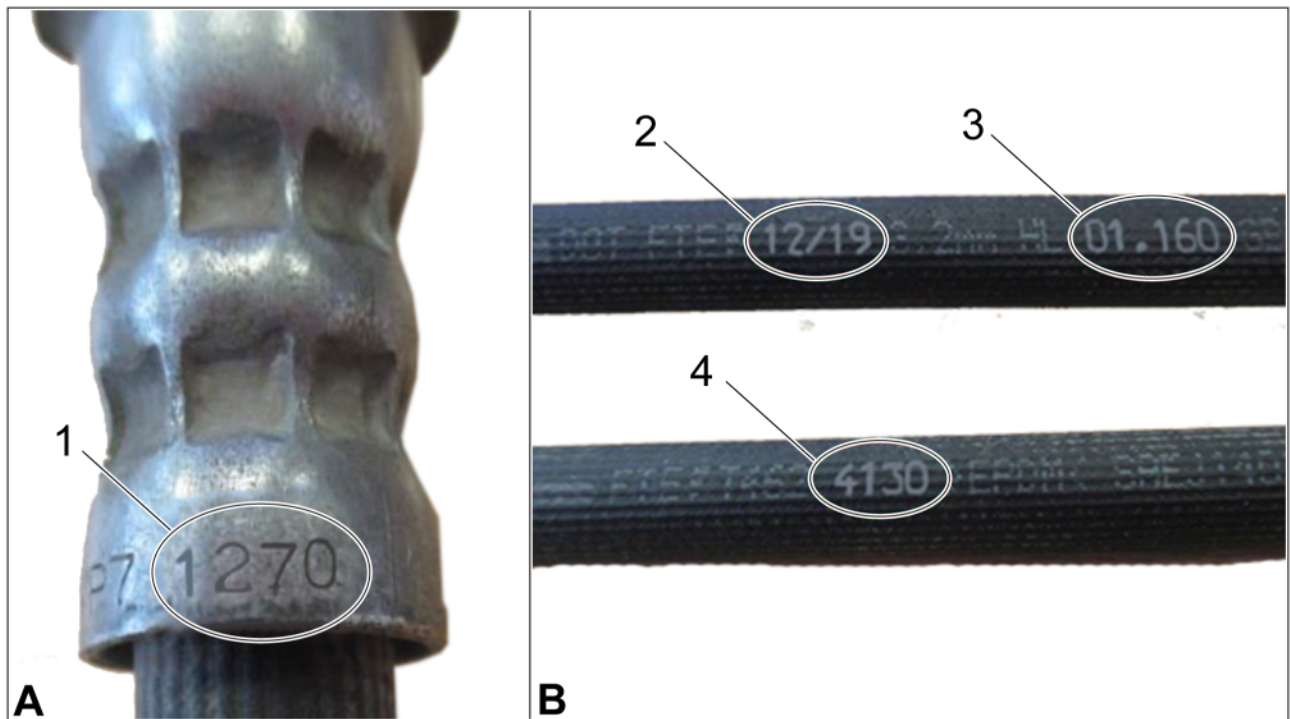
Labor position and PCSS encryption



Information

Attach photos of the damaged brake hose to the job documentation in the PCSS. The photos must show the following points:

- Appearance of damage to the brake hose (see also image above)
- Relevant marking on the installation of damaged brake hose ⇒ *Identification-1-*; embossed on the body-side installation
- Relevant markings on damaged brake hose ⇒ *Label on damaged brake hose-2, 3 and 4-*; the different markings are printed on the brake hose and rotated by 180°



Identification

A – Marking on body-side installation of damaged brake hose

B – Marking on damaged brake hose

- Label with part number of damaged brake hose ⇒ *Label on damaged brake hose*



Label on damaged brake hose

Labor position:

APOS	Labor operation	I No.
47265690	Replacing front brake hose	
47265691	Replacing front brake hose	

Location (FES5)	47260	Front brake hose
Damage type (SA4)	1521	crack/incipient crack

Important Notice: Technical Bulletins issued by Porsche Cars North America, Inc. are intended only for use by professional automotive technicians who have attended Porsche service training courses. They are written to inform those technicians of conditions that may occur on some Porsche vehicles, or to provide information that could assist in the proper servicing of a vehicle. Porsche special tools may be necessary in order to perform certain operations identified in these bulletins. Use of tools and procedures other than those Porsche recommends in these bulletins may be detrimental to the safe operation of your vehicle, and may endanger the people working on it. Properly trained Porsche technicians have the equipment, tools, safety instructions, and know-how to do the job properly and safely. Part numbers listed in these bulletins are for reference only. The work procedures updated electronically in the Porsche PIWIS diagnostic and testing device take precedence and, in the event of a discrepancy, the work procedures in the PIWIS Tester are the ones that must be followed.

© 2024 Porsche Cars North America, Inc.