

## Removal of Engine Cover on 5.7L Engines - MY 2024 - Dodge Durango (WD)

Beginning on April 25th, 2024 (VIN: 1C4SDJCT5RC193718), the 2024 Dodge Durango and all future model years will no longer have the 5.7L engine cover. The engine cover will no longer be available in production.

The engine cover installation is not reimbursable on a shortage and error claim and will be recovered as unsupported claim payment.



With Cover  
Before April 25, 2024



Without Cover  
After April 25, 2024

## Water Leak - Backlite - Jeep Gladiator (JT)

When a water leak is found on the backlite of Jeep Gladiator vehicles and the backlite needs to be resealed, use LOP 23-50-10-11 for the repair. The repair is covered under the 3/36 Basic Limited Warranty.

Repairing the urethane seal for the rear window on the JT is more difficult than a traditional rear glass. The design of the glass is set deep in the top (not flush with the outside).

It takes more care and time to remove the glass without damaging it. The method in Service Library (23 - Body / Stationary Glass / BACKLITE / Removal and Installation) was updated to show the best way (using a wire knife); then remove the old urethane, lay a new bead in and set the glass in place. This is a labor-intensive job. Also, the window frame should be inspected for cracking and the top seams inspected for leak paths at the joints.


## Tappet Kit for the PHEV Fuel Door - MY 2024 and Future - Jeep Wrangler (JL)

If the JL PHEV fuel door has a missing or broken tappet and/or base, please use the available service PN 68509685AA/B to replace the tappet, rubber boot, and tappet base. Do not replace the full fuel door and housing assembly.

**Issue:** Entire PHEV Fuel Doors housings are being changed instead of just changing/using the Tappet Kit.

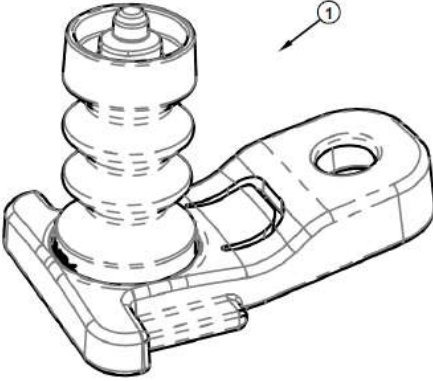
**How it happens:** Any issue related to the door opening or not opening where the tappet/tappet base is missing, broken or out of position.

To repair use the information below:



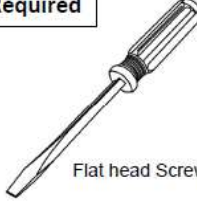
### K6856280 - Jeep PHEV Tappet and Base Service kit

[www.mopar.com](http://www.mopar.com)

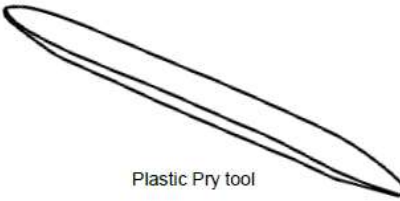


Call Out	Description	Quantity	Service Part (Y/N)	Part Number
1	Tappet with Base ( <i>new style</i> )	1	Y	68509685AB

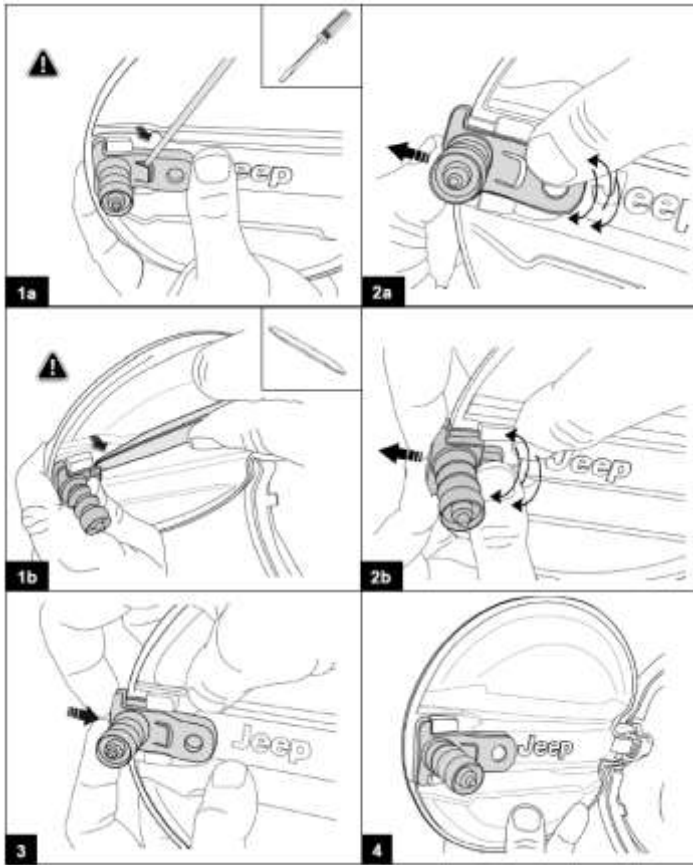
Tools Required




Flat head Screwdriver




Plastic Pry tool






**K6856280 - Jeep PHEV Tappet and Base Service kit**

[www.mopar.com](http://www.mopar.com)

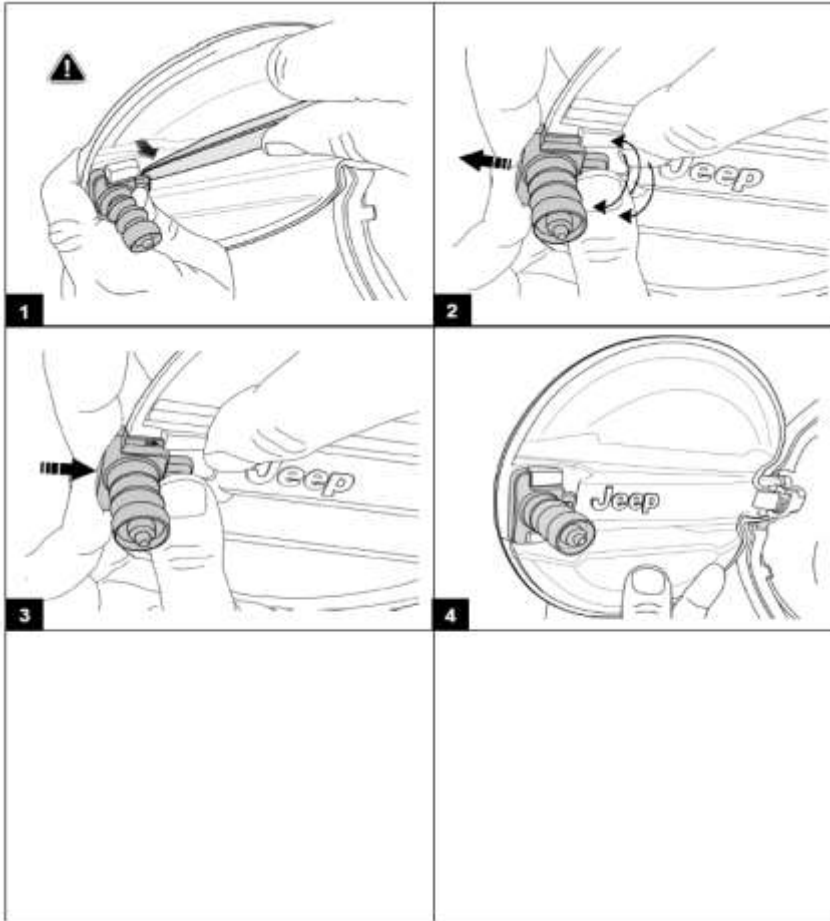


Call Out	Description	Quantity	Service Part (Y/N)	Part Number
1	Tappet with Base (old style)	1	Y	<a href="#">68509685AA</a>

**Tools Required**



Plastic Pry tool



The kit already includes the blue mark (from supplier) across the tappet and tappet base.

Once the correct installation has been verified, apply a blue mark across the back of the tappet and tappet base, using a blue grease pencil.



Install the tappet & base assembly onto the cover. It will be necessary to tap the base into location using a mallet.





Image 1.- 68509685AB tappet base kit

PN of Housing	TAPPET BASE KIT PN	
	68509685AA	68509685AB
68410780AA	1	
68410780AB	1	
68410780AC	1	
68410780AD	1	
68410780AE	1	
7AE00TRMAA	1	
68410780AF		1
7AE00TRMAB		1
68410780AG		1
7AE00TRMAC		1

Table 1.- Usage of the tappet base kits