

# 30-013 Off-Road/Low Traction Throttle Parameter Update

## TSB-30-013-FTL

Creation Date:2024-02-19

Last Revision Date:2024-05-28

Engine or Vehicle Affected:

► New Cascadia

**Description of Revisions:** This bulletin replaces the version dated 02/19/2024. The service bulletin number has been added in the title and the warranty statement is modified.

This is an informational bulletin only. The described condition is a product improvement or is not warrantable.

### Described Condition

New Cascadia vehicles built before May 29, 2023 and equipped with a Cummins engine may experience varying torque outputs if wheel rotation differences occur during rough or off-road operation when instantaneous wheel slip events trigger an ABS sensor that wheel slip has occurred. To facilitate such off-road operation with a minimum of torque loss and continued ABS function, the central gateway (CGW) must be reprogrammed. Follow the procedure below to reprogram the CGW.

### Programming the CGW

1.  Park the vehicle on a level surface, shut down the engine, and apply the parking brake. Chock the tires.
2.  Connect a laptop with DiagnosticLink® to the vehicle diagnostic connector.
3.  Go to 'Program Device' and make sure that the vehicle identification number (VIN) is correct. See fig.1.

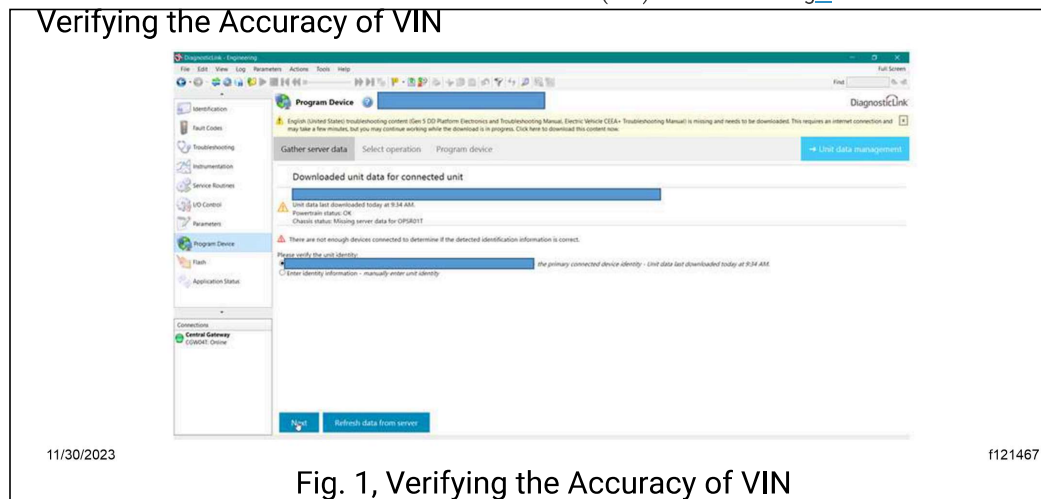
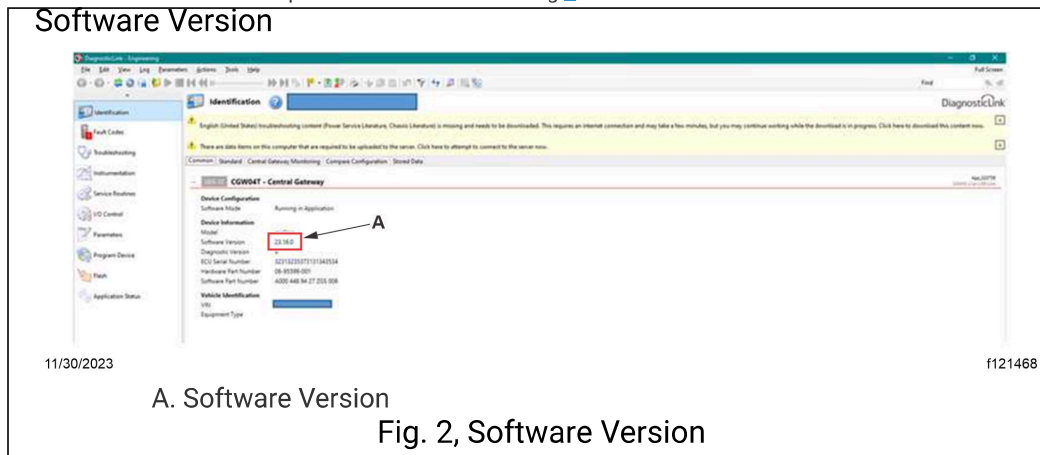


Fig. 1, Verifying the Accuracy of VIN

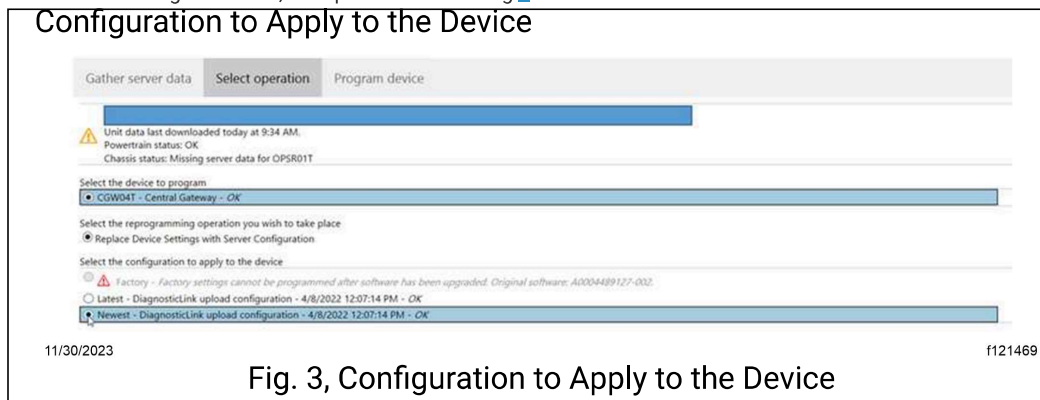
4.  Click on 'Connect to Server,' then press 'Next.'

5.  Ensure the software version of the CGW is prior to 23.XX.X code. See fig 2.



6.  Choose the CGW04T from the 'Select the device to program' list.

7.  Select 'Newest' from the configuration list, then press 'Next.' See fig 3.



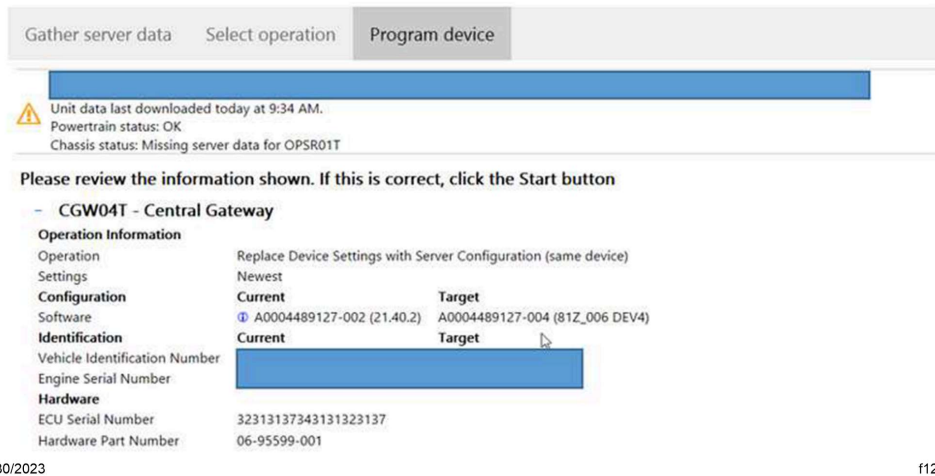
8.  Ensure programming data is targeting the new software part number from the list below (additional part numbers will be loaded when available). See Table 1 and fig 4.

Table 1, New and Old Software Part Numbers

| Previously Released Software Part Number | New Software Part Number |
|------------------------------------------|--------------------------|
| 0004489127_003                           | 0004489127_004           |
| 0004489027_023                           | 0004489027_025           |
| 0004488627_001                           | 0004488627_002           |
| 0004488827_009                           | 0004488827_010           |
| 0004489227_005                           | 0004489227_006           |
| 0004488727_001                           | 0004488727_002           |

Table 1, New and Old Software Part Numbers

## Reviewing the Information



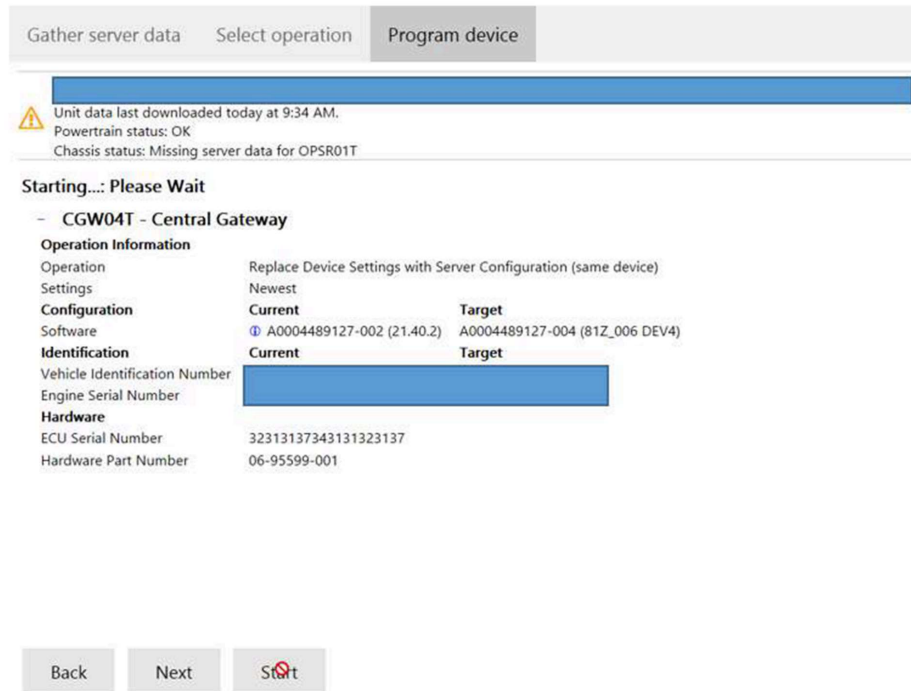
11/30/2023

f121470

Fig. 4, Reviewing the Information

9.  After reviewing the information, click 'Start' to program the CGW. See fig 5.

### Programming CGW



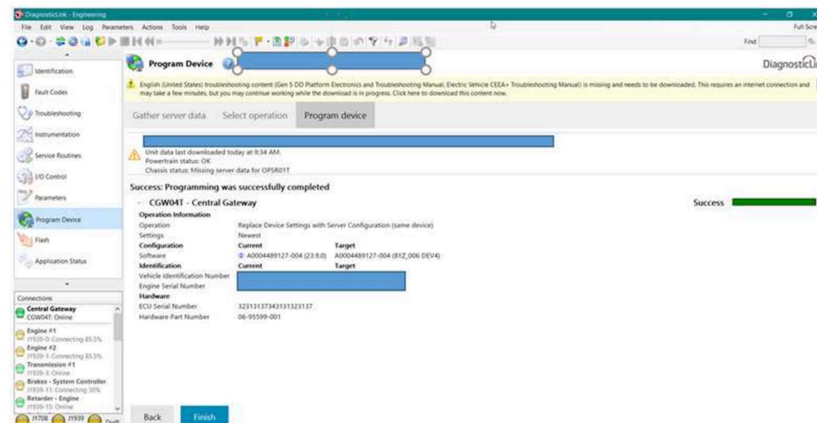
11/30/2023

f121471

Fig. 5, Programming CGW

10.  Once successfully programmed, click 'Finish'. See fig 6 and fig 7

### Programmed Successfully



11/30/2023

f121472

Fig. 6, Programmed Successfully

## Updating Verification

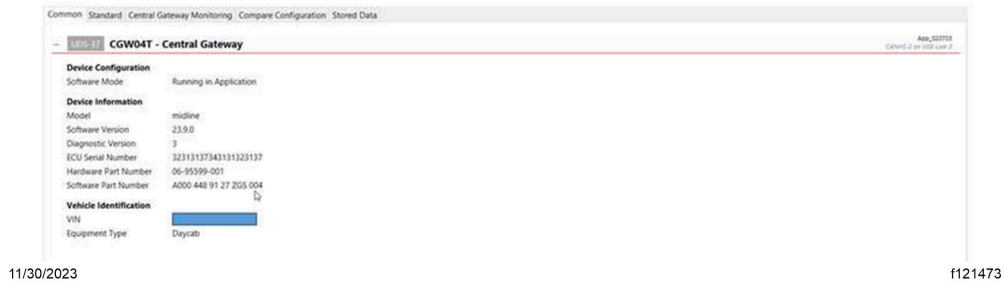


Fig. 7, Updating Verification

11.  Select 'Connect to server' to upload the changes.

12.  Disconnect the vehicle from DiagnosticLink.

13.  Turn the ignition switch to the off position.

14.  Disconnect the laptop.

### **Warranty**

This is an informational bulletin only. The described condition is a product improvement or is not warrantable.

#### **Note:**

F16,F26,F35,F36  
TROUBLESHOOT  
013-011-145

#### **CONTACT INFORMATION**

For questions, please create a Service Technical Request using the DTTS Application on the DTNA Portal.

Document Number:0000085842