

35–039 Detroit New Final Drive Standard Performance Forward Carrier Change to Top Performance Passive Lube Management

TSB-35-039-FTL

Last Revision Date:2024-05-14

Engine or Vehicle Affected:

- ▶ Business Class M2
 - ▶ 108SD/114SD
 - ▶ 112SD and Coronado
 - ▶ New Cascadia
 - ▶ Cascadia
-

Description of Revisions: The bulletin replaces the version dated 01/26/2023. The oil specification has been updated.

This is an informational bulletin only. The described condition is a product improvement or is not warrantable.

Described Condition

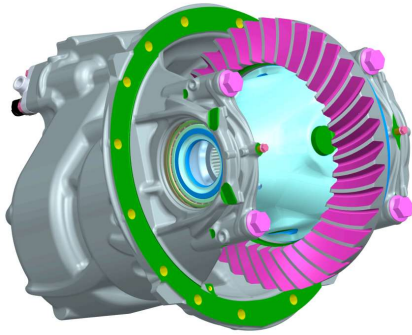
Detroit New Final Drive Standard Performance Axles will have a change to the lube management system. Initially launched without a lubrication management system, the forward rear axle will change to a passive management system. This will be the same passive lube management system as the New Final Drive Top Performance Axle with passive lube management.

The new Standard Performance carriers are backwards compatible, and will fit without modification into the same axle housing. It is okay to have the new carrier with passive lube management system in the forward carrier, and the original carrier in the rear carrier.

The parts will supersede in Excelerator. This change is happening to the forward-rear carrier only. See Fig. [1](#), Fig. [2](#) and Fig. [3](#).

Oil fill locations will change to match the New Final Drive Top Performance locations. See Fig. [4](#). The type of approved oil is DFS93K219.01 only. The rear fill plug part number on the axle housing will change to a new part number (MBA 6809900117), and it will be installed from the inside, similar to the Top Performance carrier. See Fig. [5](#).

Original Standard Performance Carrier without a Lube Management System

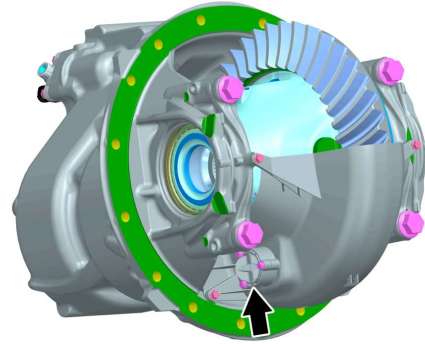


12/09/2022

f350921

Fig. 1, Original Standard Performance Carrier without a Lube Management System

New Standard Performance Forward Passive Lube Management Carrier with Fixed Valve

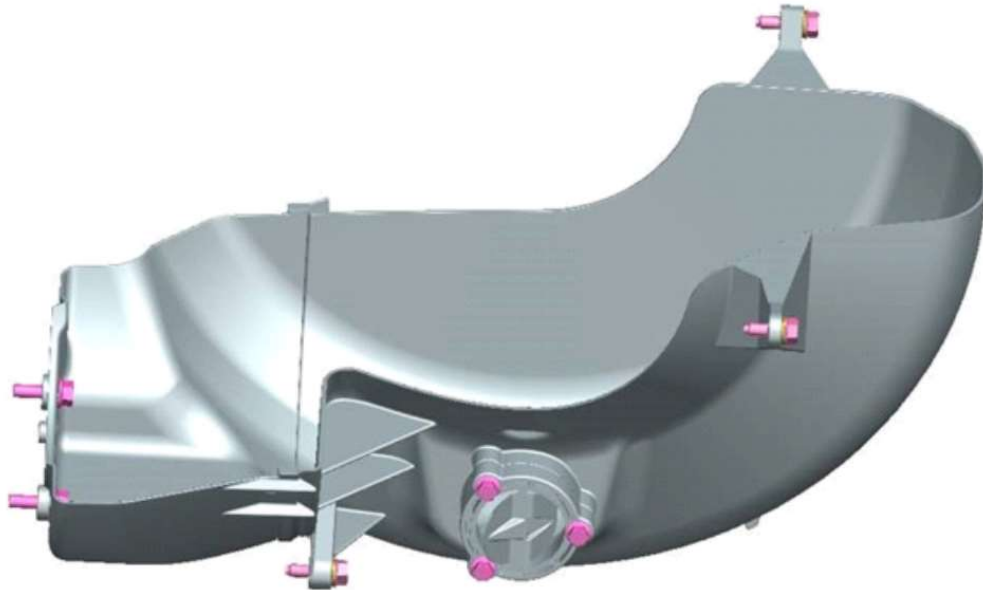


12/08/2022

f350918

Fig. 2, New Standard Performance Forward Passive Lube Management Carrier with Fixed Valve

New Passive Lube Management Valve and Windage Tray

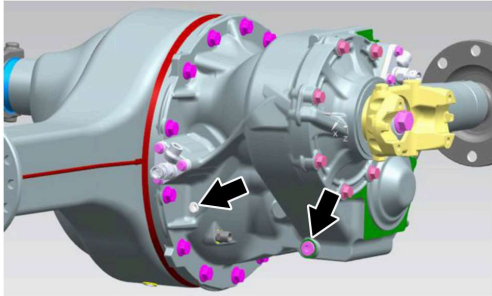


12/14/2022

f350924

Fig. 3, New Passive Lube Management Valve and Windage Tray

New Fill Locations for New Final Drive with Passive Lube Management System

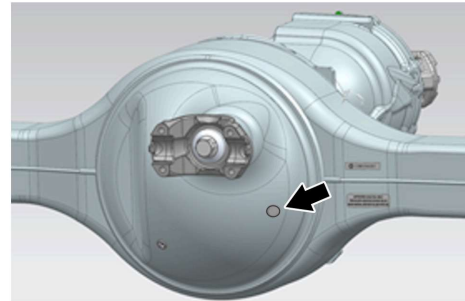


12/14/2016

f350604a

Fig. 4, New Fill Locations for New Final Drive with Passive Lube Management System

Old Fill Plug Blocked with New Plug Inserted from Inside of the Carrier Housing



12/14/2016

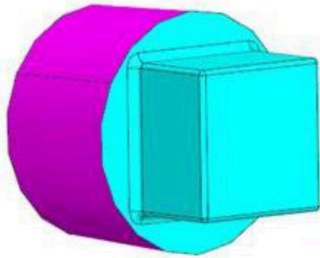
f350622

Fig. 5, Old Fill Plug Blocked with New Plug Inserted from Inside of the Carrier Housing

Carrier Replacement

1. In order to replace the carrier, clean the housing, and remove the external fill plug from the axle housing.
2. Install the new fill plug (MBA 6809900117) from the inside of the housing. See Fig. 6 and Fig. 7.

Old Fill Plug

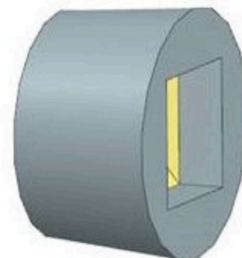


01/17/2023

f350927

Fig. 6, Old Fill Plug

New Fill Plug



01/17/2023

f350928

Fig. 7, New Fill Plug

3. Install the new carrier and new carrier parts in the same manner as the New Final Drive Top Performance carrier.

Warranty

This is an informational bulletin only. The described condition is a product improvement or is not warrantable.

Note:

REPLACE

F07,F18,F15,F25,F03,F16,F26,F35,F36,F12,F22

Document Number:0000096679