

95B - Traffic Jam Assist Not Operating as Expected

Vehicles Affected

Models	Model Year	Model Type	VIN Range	Vehicle-Specific Equipment
Macan	As of 2022 up to 2024	95B	N/A	611 – Lane Keep Assist incl. TJA

Revision History

Revision	Release Date	Changes
0	May 15, 2024	Original document

Condition

Customer complains Traffic Jam Assist (TJA) is not functioning in accordance with Owner's Manual instruction.

Technical Background

The option code for Lane Keep Assist (LKA), 611, includes TJA. Per the Owner's Manual, TJA engages under the following prerequisites: => See Figure 1- TJA prerequisites

The Macan III combines features from both LKA and ACC to provide TJA. Independently, both LKA and ACC function as described in the Owner's Manual. When the aforementioned prerequisites are met, the instrument cluster and vehicle do not behave consistently with TJA's functional description.

Namely:

- When the vehicle slows down below 35 mph with ACC on and LKA engaged, the LKA icon changes to passive. (=>Refer to Figure 3)
- When ACC & LKA functions engaged above 35 mph, LKA illuminates active again. (=>Refer to Figure 2)

Activate and deactivate Traffic Jam Assist

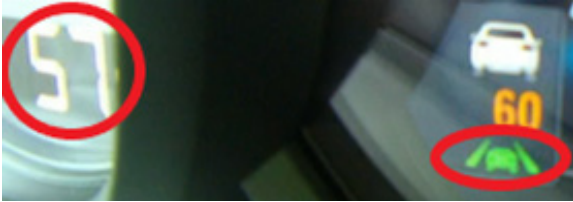
For Traffic Jam Assist to be active, the following conditions must be met:

- ✓ Lane Keep Assist is turned on.
- ✓ Adaptive Cruise Control (ACC) active.

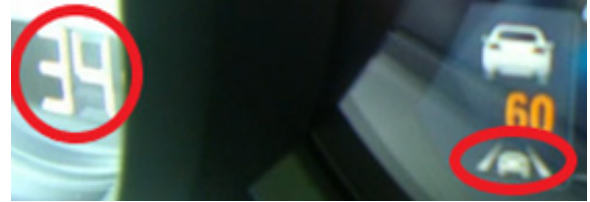
The following conditions must also be met for steering intervention:

- ✓ Hands on the steering wheel.
- ✓ Turn signal not set.
- ✓ Road markings detected at vehicle speed below approx. 40 mph (65 km/h) – or – adaptive cruise control (ACC) target object present at vehicle speed below approx. 20 mph (35 km/h).

Figure 1- TJA prerequisites



**Figure 2 -
ACC functions operating as normal**



**Figure 3 -
TJA icon not being shown below 35 mph**

Service Information

This topic is currently under investigation. Do not attempt to remedy the issue until further instruction.

Please inform the customer TJA is currently not available.

Search Items

Traffic Jam Assist, TJA, LKA, ACC, Macan, 95B.III

Important Notice: Technical Bulletins issued by Porsche Cars North America, Inc. are intended only for use by professional automotive technicians who have attended Porsche service training courses. They are written to inform those technicians of conditions that may occur on some Porsche vehicles, or to provide information that could assist in the proper servicing of a vehicle. Porsche special tools may be necessary in order to perform certain operations identified in these bulletins. Use of tools and procedures other than those Porsche recommends in these bulletins may be detrimental to the safe operation of your vehicle, and may endanger the people working on it. Properly trained Porsche technicians have the equipment, tools, safety instructions, and know-how to do the job properly and safely. Part numbers listed in these bulletins are for reference only. The work procedures updated electronically in the Porsche PIWIS diagnostic and testing device take precedence and, in the event of a discrepancy, the work procedures in the PIWIS Tester are the ones that must be followed.