

Technical product information

Topic	Fatigue warning is not visible within the Infotainment screen menu after the Data bus control unit (J533) was replaced
Market area	Australia E04 Bentley rest Asia and Australia (6E04),China 796 VW Import Comp. Ltd (Vico), Beijing (6796),Germany E02 Bentley rest Europe (6E02),Japan E03 Bentley Japan (6E03),Korea, (South) E08 Bentley South Korea (6E08),United Arab Emirates E06 Bentley Middle East and Africa (6E06),United Kingdom E01 Bentley UK (6E01),United States E05 Bentley USA and rest America (6E05)
Brand	Bentley
Transaction No.	2073815/1
Level	EH
Status	Approval
Release date	

New customer code

Object of complaint	Complaint type	Position
information, navigation, communication, entertainment -> driver information system (DIS, MFI, MMI) -> break recommendation indicator -> break recommendation simulation (demo mode)	functionality -> cannot be activated	
information, navigation, communication, entertainment -> driver information system (DIS, MFI, MMI) -> break recommendation indicator	functionality -> cannot be activated	
information, navigation, communication, entertainment -> driver information system (DIS, MFI, MMI) -> break recommendation indicator	functionality -> not adjustable / controllable	
information, navigation, communication, entertainment -> driver information system (DIS, MFI, MMI) -> break recommendation indicator	functionality -> does not switch on	
information, navigation, communication, entertainment -> driver information system (DIS, MFI, MMI) -> stop recognition	functionality -> without function / defect	
vehicle service -> vehicle diagnosis	control units, services	

Vehicle data

Bentayga Series

Sales types

Type	MY	Brand	Designation	Engine code	Gearbox code	Final drive code
4V1*	2024	E		*	*	*
ZV1*	2024	E		*	*	*

Documents

Document name
master.xml

Fatigue warning is not visible within the Infotainment screen menu after the Data bus control unit (J533) was replaced

Customer statement / workshop findings

Fatigue warning is not visible (Figure 1) within the Infotainment screen menu after replacement of the Data bus control unit (J533)

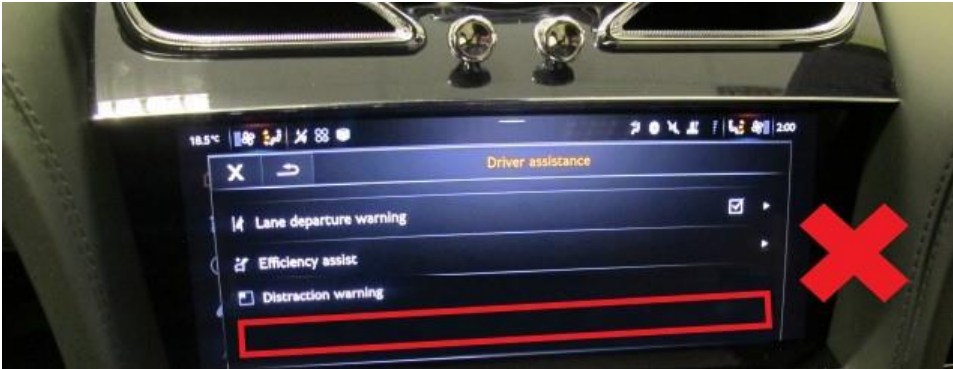


Figure 1

NOTICE
 Figure 2 shows the Fatigue warning (Correct status)

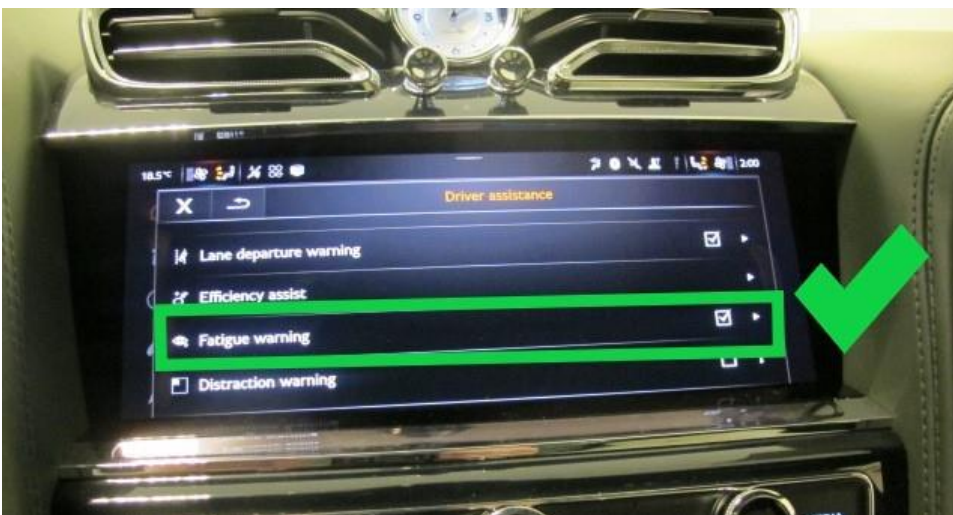


Figure 2

Technical background

When initialising and calibrating the replacement Data bus control unit (J533) one of the adaption channels may not have been written correctly. As a result, the menu entry for the fatigue warning in the Infotainment screen is missing

Should the described issue be evident please conduct the instructions within the Measure section of this TPI

Production change

-

Measure

- Check the latest ODIS version is installed on your diagnostic machine

After initialising the Data bus control unit (J533) the operative must perform the configuration again as follows:

- Connect a suitable 12 volt battery charger to the vehicle before proceeding - Refer to Rep.Gr 27
- Select Guided functions from 0019 Data Bus OBD interface (Gateway) Control module (Figure 3)

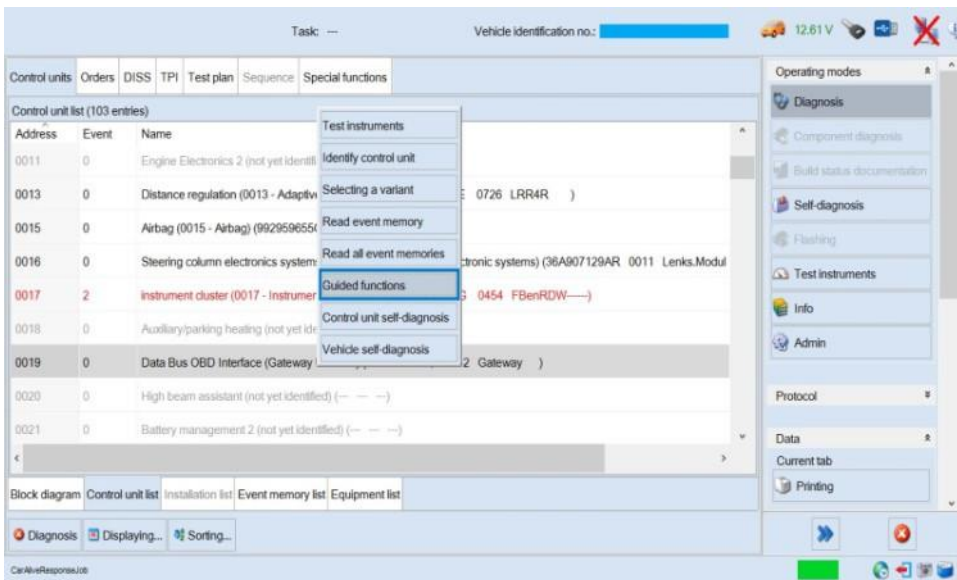


Figure 3

Referring to Figure 4 - Select 0019 - Check control unit configuration > Select Run

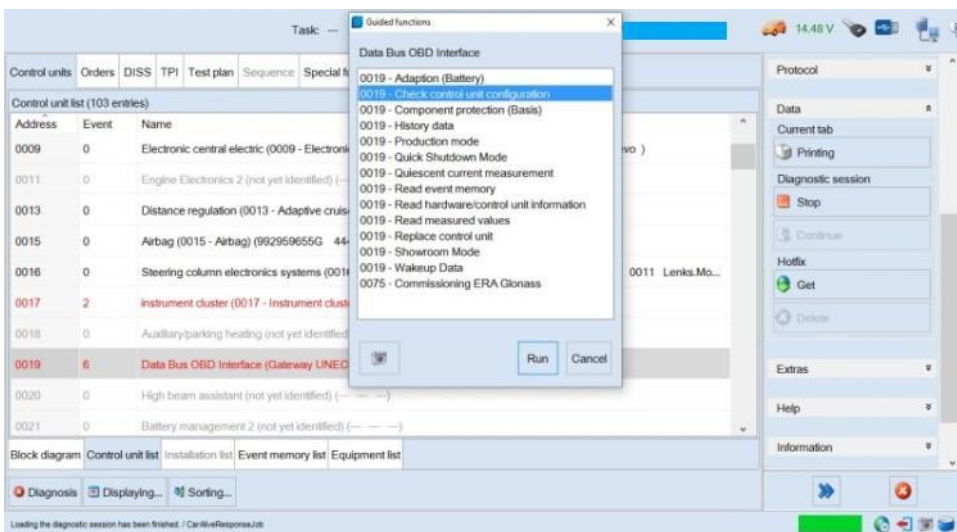


Figure 4

- On completion - Switch off the ignition

Remove the diagnostic interface from the OBD port

Switch off **and** remove the 12 volt battery charger from the vehicle

Close the bonnet, boot and all doors

Lock the vehicle

Wait 5 minutes to allow the vehicle to go into bus silence

When 5 minutes has elapsed, unlock the vehicle and open the driver's door

Switch on the ignition

Carry out a Guided Fault Finding check (GFF)

Erase all applicable DTC's **Hint:** In the event the DTC's cannot be cleared the operative must conduct all applicable test plans to completion

- Once the procedure is complete check the infotainment screen to confirm if the "Fatigue warning" menu entry is displayed and can be selected under the Driver assistance menu as Figure 1

Warranty accounting instructions

Warranty Type 110 or 910

Damage Service Number 93 05

Damage Code 00 39

Diagnostic time

Labour Operation Code 01 50 00 00

Time As per ODIS log (Must not exceed 30 TU)

