



Triple Glass Door Shower Installation Instructions

****Verify all parts are present before attempting to install****

Parts List

1. Right and left vertical upright frame rail (a); w/ C-channel inserts (b)
2. Toprail
3. Bottom track
4. 3 piece glass door assembly



2



3

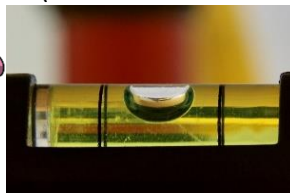


4



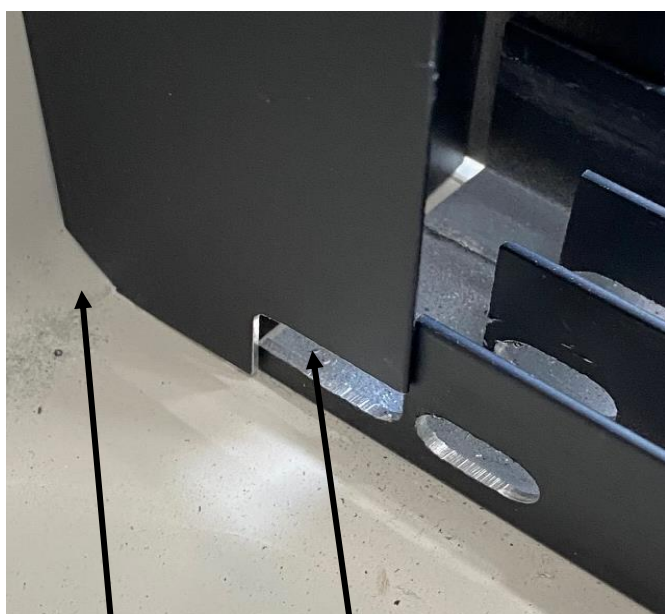
Tools Required

Tape measure, straight edge, pencil, level, saw (to cut aluminum rail), & caulk gun/sealant



Step One; prep the area for install

- a. This shower assembly is designed to compensate for a minor amount of 'out-of-plumb', but, make sure shower walls are plumb (not leaning in or out more than 1/4"), to get the best fit for this product.
- b. Make sure tub area is cleaned and free of all debris, as some finish sealing will be necessary to prevent water leakage.
- c. Using a straight edge, (Fig. A), draw a straight line along the lower edge of the shower basin... keeping the spacing along the edge the same. Then draw a straight line up the wall on other side. Fig. B



C

D

- d. Locate both of the left and right upright frame rails. Take notice of the lower beveled corner of one end of each frame piece (shown in Ref. C). This indicates this end goes in the lower corner of the shower. Also take note of the notch on the same end of each frame rail (Ref. D). This notch will always face into the shower as a drainage notch/weep hole! If the notch is facing toward the outside of the shower, then it is on the wrong side!

Step Two; frame install

- e. With the correct upright parts in place, and running along the edge of the pencil mark, secure the rail (a) to the shower wall through the three screw holes provided in both rails ... making sure the rail is pushed firmly down to leave no gapping on the shower base. When completed, standing outside the shower and facing the shower opening, the left side upright should have a lock bracket on the outside of the shower...the right side should have the lock on the inside as in Fig F.

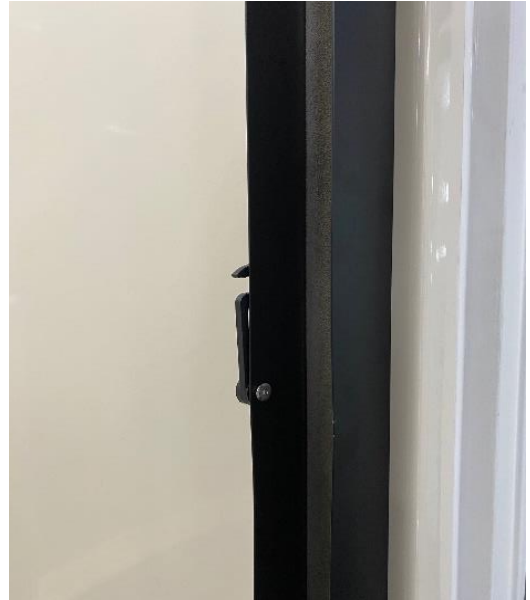
Note: If the locks are inside on the left-side and outside on the right, the frame pieces are installed



E upside-down. Confirm the angled notch is in the corner

F

Remember, the 45° corner notch will always be in the lower corner when installed properly, the square notch will always face to the inside, and the handle on the left side will face out while the handle on the right side will face in!

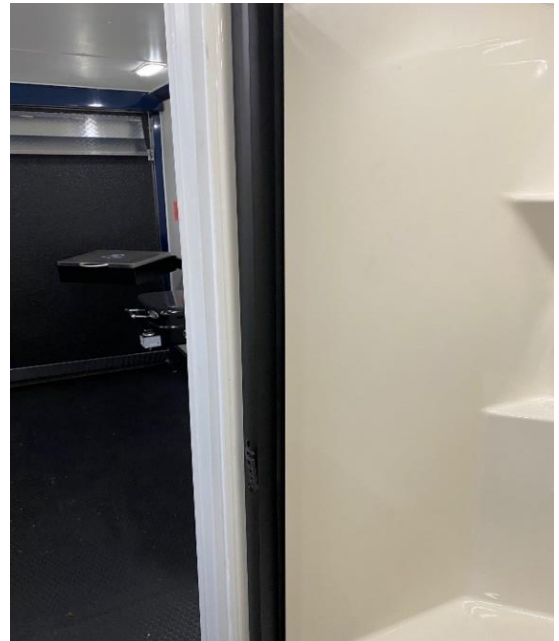


- f. With the uprights securely screwed in place, locate the two C-channel inserts (b). Both inserts have a magnet strip attached to the inside of the channel. When installed, the magnet should be closest to the side opposite the lock (so, on the left side, the lock is on the outside of the shower...the magnet should be on the inside side of the C-channel when installed; on the right side, the lock is on the inside of the shower... the magnet should be on the outside side of the C-channel. Insert C-channel with the legs facing into the upright frame as in Fig.(s) G&H. Push the C-channel all-the-way down to the tub basin. Repeat for other C-channel insert.



G

H



Step Three; inserting bottom track (3)

h. With both vertical rails and both C-channel inserts installed, take the bottom track and lay it down inside both frame ends, making sure the weep holes face into the shower for drainage. Also note that the notches on the ends should now be coupled with the notches in the uprights to form drain holes. If bottom track is too long, trim equal amounts off of both ends to fit.

****Do not trim all excess from one end as this potentially could cut off a drain hole.****



IMPROPERLY INSTALLED (weep hole is blocked)

frame notch should be on inside... see rule (d.)

Note: No notch should ever face to the outside of the shower

i. Once the track is centered in the opening, place one screw in center hole to secure to tub threshold.

Step Four; installing glass doors

- j. Locate the top rail and glass door assembly and identify the side of each that has the labels "OUTWARD". This identifies these sides as facing the outward side of the shower and should be mated together as such. See Fig. I. The brushed nickel model shown for clarity of the sticker

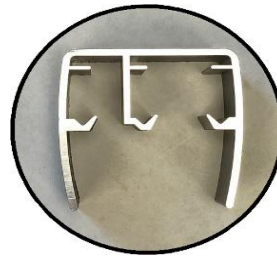


- k. If one or both stickers are missing, the parts can still be mated together. Start by removing the packing material from the door assembly, but do not separate the glass panels.

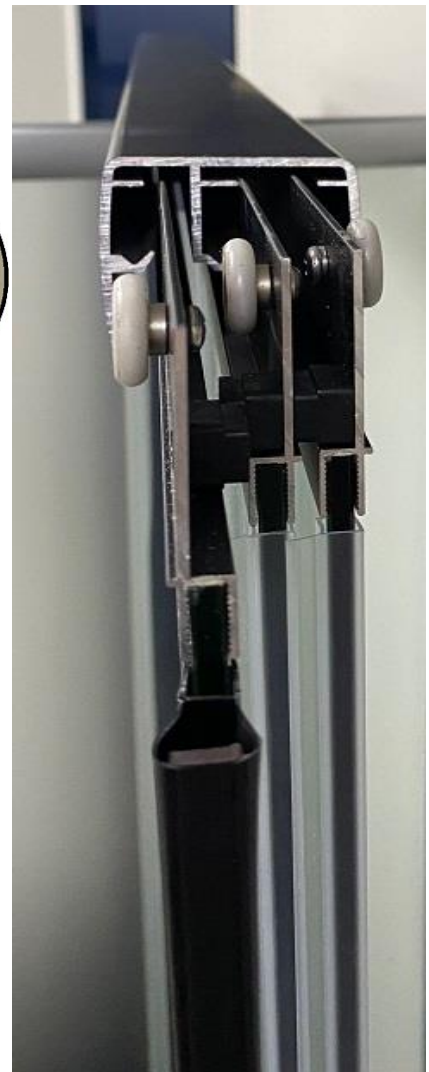
- l. Measure the shower opening across the top and cut the top rail to this dimension.

- m. With the glass panels in a standing position and the rollers on the top, align the grooves of the top rail with the rollers on the glass panels. Looking at the picture in Fig. J, the wide track on the top rail will align with the two panels that have the rollers opposite each other, while the outer glass panels will roll onto a separate track, in the other opening.

Note: it is important to install the top rail onto the doors properly, but once installed, the doors can be installed into the shower assembly inward or outward... this is interchangeable.



Toprail End View



k. With the top rail aligned with the door rollers, slide the top rail over all door rollers until fully engaged.



l. With the door assembly together and staged in front of the shower framework, pick up the whole door assembly so that the top rail is up and over the vertical side rails and the bottom door glass is over the bottom track.

m. At the same time, lower the door assembly so that the top rail will slide down and over the vertical frame rails, Fig. K, while the bottom door glass slides into the track grooves...three glass panels for three grooves, Fig. L.

K



n. Make sure that each glass panel falls into each groove freely and aligns properly. An improper fit could cause unwanted drag on the door assembly...doors should float freely!

L



Step Five; adjustments

o. Rarely is a wall, that a shower will be installed in, going to be perfectly plumb. Almost always, there will be a small amount of leaning, in or out, that will cause the doors to gap on the sides. This shower system comes with a magnetic C-channel installed on both ends to draw the glass doors closed and hold them there during use. Because the walls may be out-of-plumb, the C-channel is in place to allow the installer to compensate for some of this. Simply move the C-channel in or out until it aligns with the glass and creates a good magnet draw on the seal. If the magnets do not seem to have any draw to each other, check the C-channel insert to verify the magnet insert is on the correct side of the track (the same, mating side as the door)...as mentioned in step 2f.

Once both sides have been adjusted for a good seal, a screw will need to be added to the top-rail, being certain to screw through the top-rail, the upright frame rail, and the C-channel. This will lock the top-rail to the side framework and keep it from bouncing off when the RV/trailer it is installed in is being transported. This will also lock the C-channel in place to help mimic a plumb wall for the door to magnetically seal against.



This is a split picture to show both ends of the shower top-rail with the added securement!

Complete the install by fully sealing the frame base, the joints between the C-channel and the track on both sides and all along the inside of the frame where it meets the wall. Allow the sealant to skin before spraying water around the entire inside of the shower to see if any water is leaking out, then adding sealant to that area until no more water leaks are found.

