

Vermeer MV Solutions, Inc.

Trenchless
 Piedmont, South Carolina 29673 USA

FIELD CAMPAIGN KIT #: VMV000085 **DATE:** 9 May 2024
For Dealer Reference: Service Bulletin #: SMV2024-011

Boom Raise Cylinder Pins and Retaining Clips Update Kit

CAMPAIGN TYPE:	Mandatory – Product Safety DEALER INSTALLATION ONLY
CAMPAIGN CATEGORY:	Kit and Bulletin

MACHINE/ ATTACHMENT MODEL(S):	SERIAL NUMBERS:		Kit version
	Included	Excluded	
VX200	See attached listing on page 5 for specific VIN.	None	VMV01
ECO200			
VXT8			



Purpose: BOOM CAN FALL UNEXPECTEDLY. During manufacturing, the incorrect boom raise cylinder pin and retainer clips may have been installed. The retaining clips can become displaced during operation and the boom may fall. **Death or serious injury** is possible if the boom falls and strikes or crushes an operator or crew member. Machine or property damage is also possible.

VMV000085 has been created to provide the necessary parts and instructions to install replacement pins and new retaining clips.

Special tools and conditions:

- Engineer’s Scale



WARNING: Use the following shutdown procedure before attempting to do any of the work described in this kit.

Shutdown Procedures:

VXT8: Shutdown Procedure

For your safety and the safety of others, use the shutdown procedure before servicing, cleaning, unclogging, or inspecting the machine. A variation of this procedure may be used if instructed within this manual, or if an emergency requires it.

DISENGAGE PTO

Step 1: Ensure boom is stowed in transport position, and all other components such as tank and tank cover, are in home position. Reference “Boom - Store for Transport”, [page 30-5](#) of the Operator’s Manual.

Step 2: Reduce engine speed to idle (1000 rpm).

Step 3: Press “N” on Allison transmission control panel. Wait until display reads “NN” and the engine speed is reduced.

Step 4: Hold *PTO Control Switch* to disengage PTO.

Step 5: Shut off engine and remove key.

NOTICE: The PTO will only disengage after the transmission is shifted to “NN” and the drive-line slows to a stop. **Do not** shutdown the engine before disengaging the PTO. Failure to follow this procedure may result in premature gearbox failure.

SHUTTING DOWN THE MACHINE

Step 1: Verify PTO is fully disengaged, and all switches are in OFF position.

Step 2: Ensure transmission is in NEUTRAL (“N”). Verify the Parking Brake is ON.

Step 3: Run the engine at low idle for at least 5 minutes, before turning it OFF after full-load operation.

Follow Truck and Engine Operation Manual procedure for engine shutdown.

NOTICE: Failure to allow engine to idle for the recommended time may result in engine damage.

Step 4: Relieve water pressure from water tools by squeezing trigger. Disconnect tool(s) from hose.

Step 5: Shut off engine and remove key.

Step 6: Follow all shutdown procedures according to the Truck Operation Manual. Chock wheels.

ECO200: Shutdown Procedure

For your safety and the safety of others, use the shutdown procedure before servicing, cleaning, unclogging, or inspecting the machine. A variation of this procedure may be used if instructed within this manual, or if an emergency requires it.

STOPPING THE MACHINE

Step 1a: Stow boom in cradle.

Step 1: Reduce engine speed to idle.

Step 2: Shut off the engine and remove key.

Step 3: Relieve water pressure from the Water Assisted Tools by squeezing trigger and disconnect tool from hose.

VX200: Shutdown Procedure

For your safety and the safety of others, use the shutdown procedure before servicing, cleaning, unclogging, or inspecting the machine. A variation of this procedure may be used if instructed within this manual, or if an emergency requires it.

STOPPING THE MACHINE

Step 1: Stow boom in cradle.

Step 2: Reduce engine speed to idle.

Step 3: Shut off the engine and remove key.

Step 4: Relieve water pressure from the Water Assisted Tools by squeezing trigger and disconnect tool from hose.



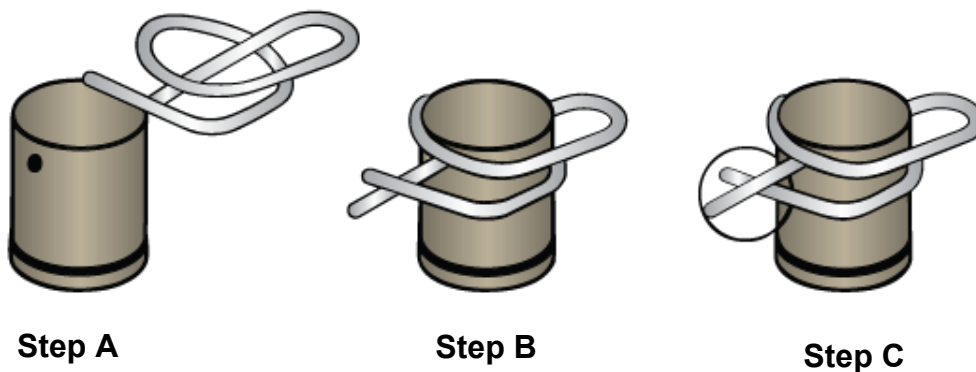
WARNING: Pressurized fluid can penetrate body tissue and result in death or serious injury. Leaks can be invisible. Keep away from any suspected leak. Relieve pressure in the hydraulic system before searching for leaks, disconnecting hoses, or performing any other work on the system. If you must pressurize the system to find a suspected leak, use an object such as a piece of wood or cardboard rather than your hands. When loosening a fitting where some residual pressure may exist, slowly loosen the fitting until oil begins to leak. Wait for leaking to stop before disconnecting the fitting. Fluid injected under the skin must be removed immediately by a surgeon familiar with this type of injury.

Procedure 1:

1. Stow boom in cradle and use above shutdown procedures per your model type.
2. Support the cylinder to prevent it from falling. Remove rod end retaining clips and pin. See **Detail A** (Figure1).
3. Install rod end pin (**3**) (Figure 1) and retaining clips (**1**).

Clips must be installed by following steps A, B, and C below. Refer to Figure A.

Figure A



Step A: Align straight leg of the clip with the hole in the end of the pin and lead the angled leg of the clip over the end of the pin.

Step B: Push the clip all the way in, automatically locking it onto the pin.

Step C: Flip the angled leg of the clip to the other side of the straight leg of the clip, providing additional locking protection.

4. Support the cylinder to prevent it from falling. Remove base end clips and pin. See **Detail B** (Figure 1).
5. Install base end pin **(2)** (Figure 1) and retaining clips **(1)**. Clips must be installed by following steps A, B, and C above. Refer to Figure A.
6. Grease the base and rod pin points before operation.
7. Remove Figure 1 and attach to the invoice or place in the manual storage box so unit owner can place with existing parts manual.

AFFECTED MACHINES - VMV010085

MODEL	VIN	MODEL	VIN
VX200	7HWS240ALG000102	VX200	000V16H0530172568
VX200	7HWS240A6LG000103	VX200	000V2000617172600
VX200	7HWS240A8LG000104	VX200	000V2000731172673
VX200	7HWW240D0JG005001	VX200	000V2000921172751
VX200	7HWW240DXJG005006	VX200	000V2000921172752
VX200	7HWW240D1KG005008	VX200	000V2000921172753
VX200	7HWW240D3KG005009	VX200	000V2000212183004
VX200	7HWW320DXLG005009	VX200	000V2000316183066
VX200	7HWW320D6LG005010	VX200	V2000316183066
VX200	1MVW240DTMG010001	VX200	000V20000409183093
VX200	1MVW240DCNG010006	VX200	000V2000523183124
VX200	1MVW240DANG010008	VX200	V2000523183124
VX200	1MVW240DLNG010009	VX200	000V2000625183152
VX200	1MVW240DVNG010010	VX200	000V2000725183170
VX200	1MVW240DANG010011	VX200	000V2000727183181
VX200	1MVW240DLNG010012	VX200	000V2000816183188
VX200	1MVW240DAPG010013	VX200	000V2001009183236
VX200	1MVW240DENG010014	VX200	000V2000606193357
VX200	1MVW240DHPG010015	VX200	000V2000710193371
VX200	1MVW240DEPG010016	VX200	V2000710193371
VX200	1MVW240DCPG010017	VX200	000V2000723193375
VX200	1MVW240DTPG010018	VX200	V2000814193380
VX200	1MVW240DCPG010020	VX200	000V2001002193393
VX200	1MVW240DTPG010021	VX200	000V2000120203448
VX200	1MVW240DPPG010022	VX200	V2000120203448
VX200	1MVW240DTRG010023	VX200	000V2000408203483
VX200	1MVW240DPRG010024	VX200	000V2001110203545
VX200	1MVW240DKRG010025	VX200	000V2001116203546
VX200	000V2000223161799	VX200	000V2001123203559
VX200	000V2000302161824	VX200	000V2001215203577
VX200	000V2000829162133	VX200	000V2000517213655
VX200	000V16H0919162178	VX200	000V2000621213661
VX200	000V2001011162215	VX200	000V2000628213662
VX200	000V2000227172419	VX200	000V2000714213665
VX200	000V2000311172432	VX200	000V2000727213667
VX200	000V2000501172532	VX200	000V2000809213670

AFFECTED MACHINES - VMV010085

MODEL	VIN	MODEL	VIN
ECO200	7HWS240A4KG000101	ECO200	7HWS240A5LG000111
ECO200	7HWS240A4LG000102	ECO200	7HWS240AKMG000113
ECO200	7HWS240A6LG000103	ECO200	7HWS240AJMG000114
ECO200	7HWS240A8LG000104	ECO200	7HWS240ACMG000115
ECO200	7HWS240AXLG000105	ECO200	7HWS240AVMG000116
ECO200	7HWS240A1LG000106	ECO200	1MVS240AHMG010001
ECO200	7HWS240A3LG000107	ECO200	1MVS240AEMG010002
ECO200	7HWS240A5LG000108	ECO200	000V2000814193380
ECO200	7HWS240A7LG000109		

AFFECTED MACHINES - VMV010085

MODEL	VIN	MODEL	VIN
VXT8	7HW8230T5KG000100	VXT8	7HW8230T2LG000122
VXT8	7HW8230T7KG000101	VXT8	7HW8230T4LG000123
VXT8	7HW8230T9KG000102	VXT8	7HW8230T6LG000124
VXT8	7HW8230T0KG000103	VXT8	7HW8230T8LG000125
VXT8	7HW8230T2KG000104	VXT8	7HW8230TXLG000126
VXT8	7HW8230T2LG000105	VXT8	7HW8230T1LG000127
VXT8	7HW8230T4LG000106	VXT8	7HW8230TVMG000128
VXT8	7HW8230T6LG000107	VXT8	7HW8230TTMG000129
VXT8	7HW8230T8LG000108	VXT8	7HW8230TCMG000131
VXT8	7HW8230TXLG000109	VXT8	7HW8230TPMG000133
VXT8	7HW8230T6LG000110	VXT8	1MV8230TCMG010001
VXT8	7HW8230T8LG000111	VXT8	1MV8230TVMG010002
VXT8	7HW8230TXLG000112	VXT8	1MV8230TAMG010003
VXT8	7HW8230T1LG000113	VXT8	1MV8230TLMG010004
VXT8	7HW8230T5LG000115	VXT8	1MV8230TCMG010007
VXT8	7HW8230T7LG000116	VXT8	1MV8230TTMG010008
VXT8	7HW8230T9LG000117	VXT8	1MV8230TPMG010009
VXT8	7HW8230T0LG000118	VXT8	1MV8230TCMG010010
VXT8	7HW8230T9LG000120		

UNIT OWNER COPY:
 Insert in parts manual
 for future reference.

Figure 1

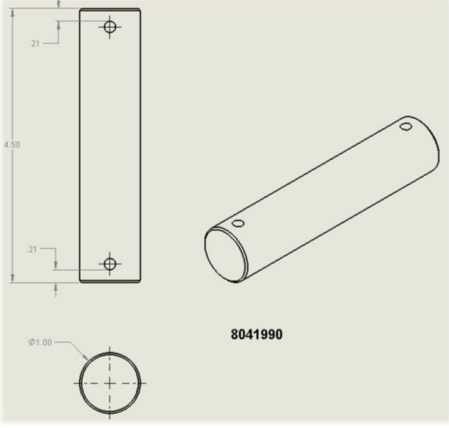
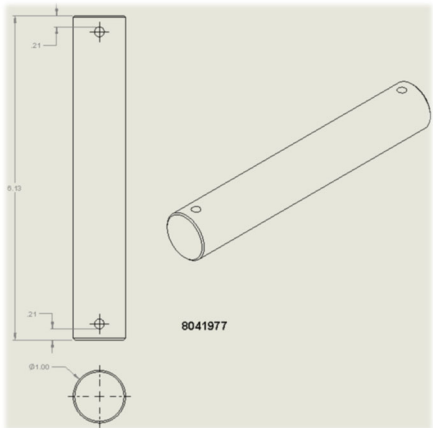
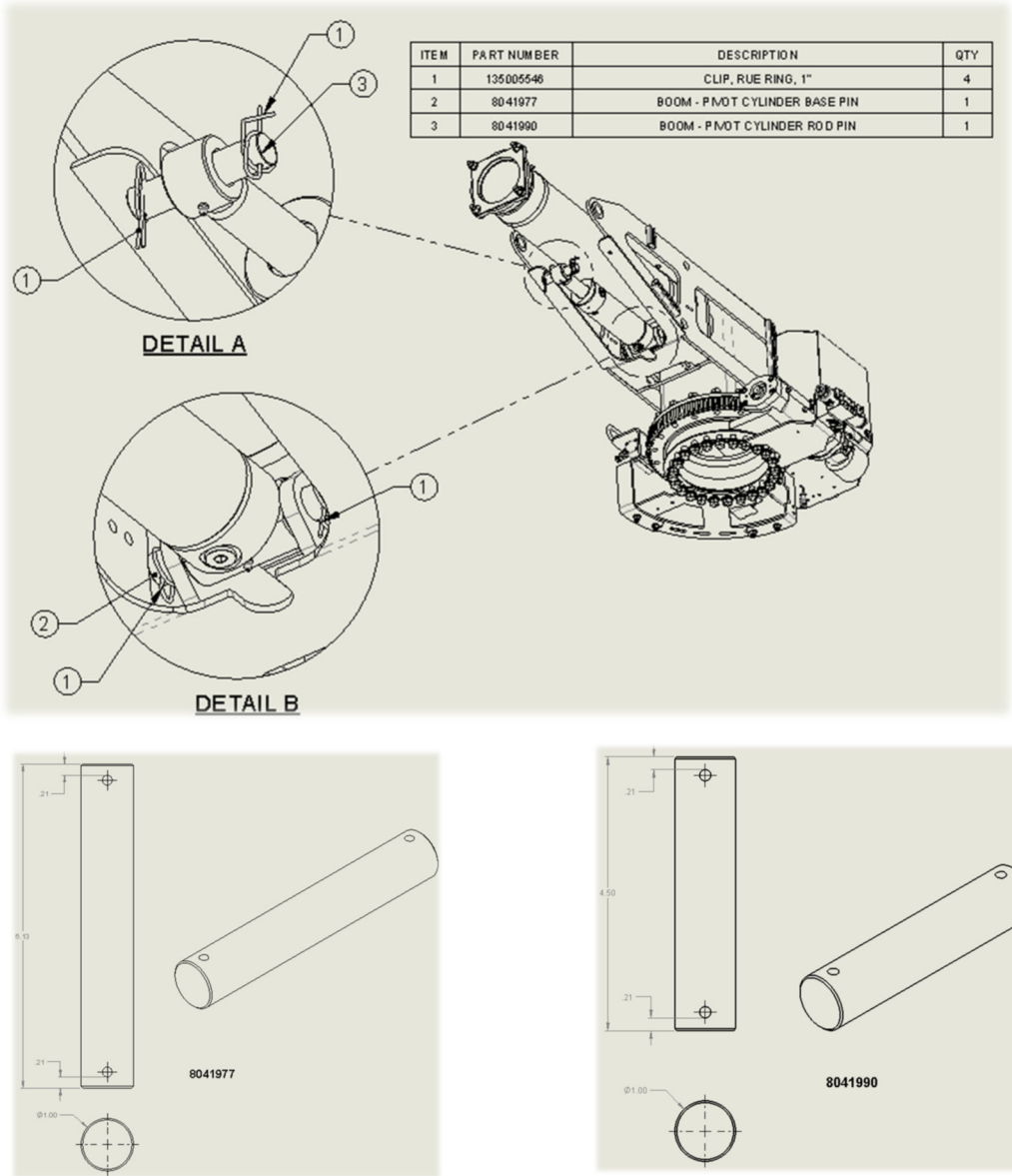


Figure 1 parts list			
<u>REF. NO.</u>	<u>PART NO.</u>	<u>DESCRIPTION</u>	<u>IK01 QTY.</u>
1	135005546	CLIP, RUE RING, 1 in.	4
2	8041977	BOOM – PIVOT CYLINDER BASE PIN	1
3	8041990	BOOM – PIVOT CYLINDER ROD PIN	1
		Kit includes all items in Figure 1 parts list.	