

: 97899

ge

st

ns

Deny

e

uest

Communication

Publish Dates

- The Start Date is when the communication will be visible to dealers in DCMail.
- The End Date is when the communication will no longer be visible to dealers in DCMail.
- **NOTE:** End Dates are limited to one (1) year from the Start Date. If you wish to lengthen the End Date, you may extend it at any time after publish.

Start Date 5/8/2024 7:00 AM

End Date 5/29/2024 11:55 PM

Note: All times are EST

[Extend End Date](#)

Title

What will display in DCMail for dealers to click on.
TIP:Keep titles short, but specific and eye catching.

LATCH - FRONT DOOR/REAR DOOR

Flagged for Reporting Agency

NO

Communication Summary

To increase search capability and visibility of your communication, please provide a brief summary or your message (140 characters max). This will display when dealers hover over your communication.

LATCH - FRONT DOOR/REAR DOOR

Message

The body of your communication. Use the formatting toolbar above to format text, insert tables, pictures, and/or hyperlinks.

Click Edit > Attach File to attach documents

IMPORTANT NOTES:

- Pictures must have unique file names. If you receive an error message when uploading a picture, it means the file name has already been chosen. Simply change your file name and try again.
- Communications cannot exceed more than 12MB; this includes images and text, and all attachments.

You have been identified as either having stock on hand or in transit to your dealership.

Please check and return suspect stock of part numbers: **68366541AA, 68366540AA, 68366540AB, 68367059AB, 68366542AB** and **68366543AB** build before Julian date code **19222**. Please refer to QIR attachment.

Please return all parts back to your facing depot using **Return Code 02**, before 29th May 2024.

For replacement place new orders.

Return any open orders in process too. Direct questions regarding returns via email to mopardmail@stellantis.com.

Attachments

[QIR_English.pdf](#)

File Attachment Information

File Size (MB)	File Name
0.13	QIR_English.pdf



Quality Inspection Request

08-May-2024

LATCH - FRONT DOOR/REAR DOOR

Suspect Part Identification

Part numbers: 68366541AA, 68366540AA, 68366540AB, 68367059AB, 68366542AB, 68366543AB

Julian date code location:

Julian date code shown

19222: DDDYY

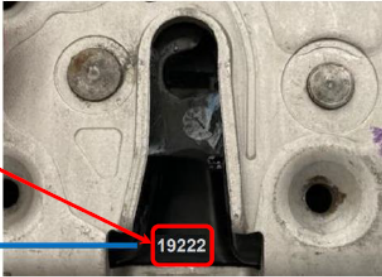
192th Day of 2022

11th July 2022

Part in picture shown is suspect.

Part in picture below is **suspect**

Date prior to 19222 (Jul 11th, 2022)



Suspect parts: Parts built before Julian date code **19222 (11th July 2022)** are suspect parts.