



GROUP	MODEL
ELE	2024MY EV9 (MV)
NUMBER	DATE
344	May 2024

## TECHNICAL SERVICE BULLETIN

### SERVICE ACTION: EV9 HEADLAMP AIM INSPECTION AND ADJUSTMENT (SA574)

This bulletin provides the procedure to inspect and, if necessary, adjust the headlamp aim on some 2024MY EV9 (MV) vehicles equipped with Light Emitting Diode (LED) headlamps, produced from February 1, 2024 through April 6, 2024. The Insurance Institute for Highway Safety (IIHS) is a well-known organization that conducts supplemental testing to evaluate certain aspects of vehicle performance. As a result of such testing, Kia and IIHS have determined that improvements could be made to adjust headlamp aim to improve the focus and reduce glare from the headlamps to oncoming traffic. It should be noted that this condition is not a Federal Motor Vehicle Safety Standard (FMVSS) compliance issue. Kia is requesting the completion of this Service Action on all affected vehicles in dealer stock. Before conducting the procedure, verify the vehicle is included in the list of affected VINs.



#### NOTICE

**A Service Action is a repair program without customer notification that is performed during the warranty period. Any dealer requesting to perform this repair outside the warranty period will require DPSM approval.**

Repair status for a VIN is provided on KDealer+ (Service → Warranty Coverage → Warranty Coverage Inquiry → Campaign Information). Not completed Recall / Service Action reports are available on KDealer+ (Consumer Affairs → Not Completed Recall → Recall VIN → Select Report), which includes a list of affected vehicles.

This issue number is SA574.

**Inspection and Adjustment Procedure:**

1. Reference the headlamp aiming adjustment [video](#) by referring to "Body Electrical System → Lighting System → Headlamps → Adjustment" in the applicable Shop Manual on KGIS.



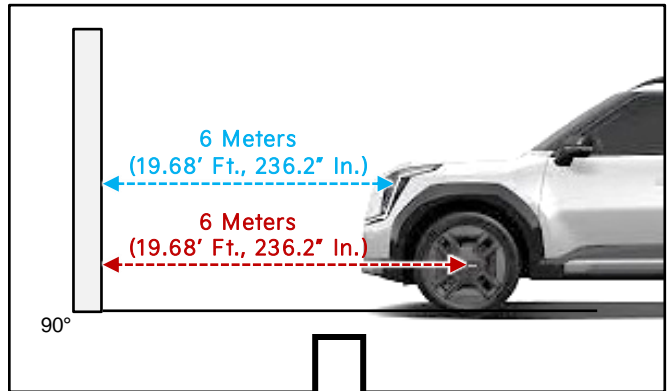
2. Before inspection, verify the following conditions:

- Set tire pressures to the specifications listed on the door jamb label.
- Ensure the work area/room is as dark as possible during inspection.
- No one is seated in the vehicle.



- 3a. Park the vehicle on a flat surface, 236.2 inches (6 meters) directly across from a screen or wall.

Distance from Headlamp	Distance from Center Of the Front Wheel
<b>236.2" In.</b> <b>(6 meters)</b>	<b>259.1 Inches</b> <b>(6.58 Meters)</b>

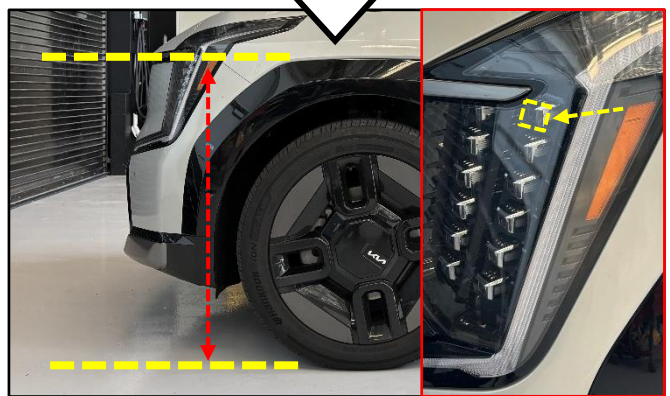


- 3b. Notate the headlamp cut-off marker distance (A) height by measuring the distance between the floor and the top headlamp cube diode module.

W

(Ex. If (A) is = 37.4" in. (950mm), mark the screen/wall directly across from headlamp).

**Note:** Distance shown from vehicle to screen in the images are not to scale and for reference use purpose only.

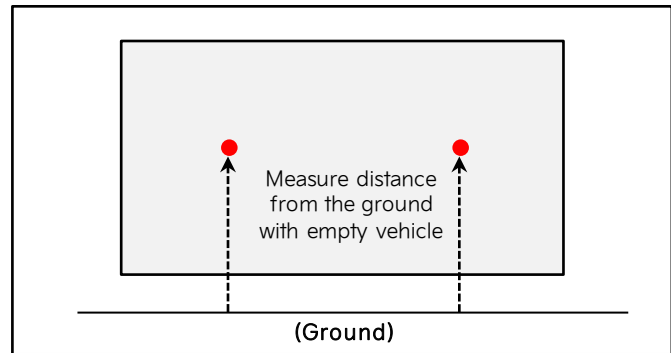


SUBJECT:

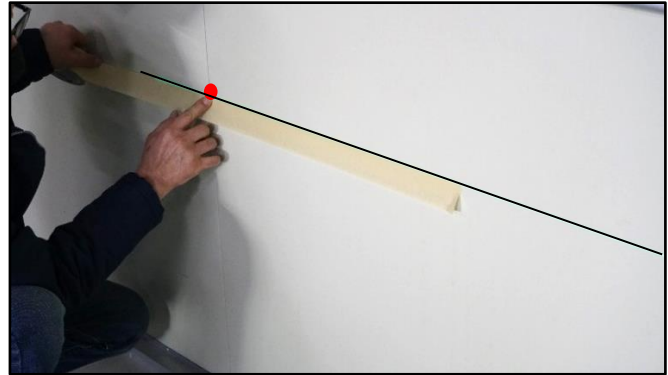
**EV9 HEADLAMP AIMING INSPECTION AND ADJUSTMENT (SA574)**

- 3c. From the ground up, mark two (2) dots on the screen, directly across from each headlamp (LH/RH) using the applicable model measurements listed below by reducing (-) 0.3% from distance (A),

(Ex. If (A) is 37.4" in. (950mm) minus (-) 0.3%, then (B) is = 36.7 in. (932 mm).



4. Draw a straight line through the dots, and/or apply tape as shown. This will be the headlamp cutoff line.



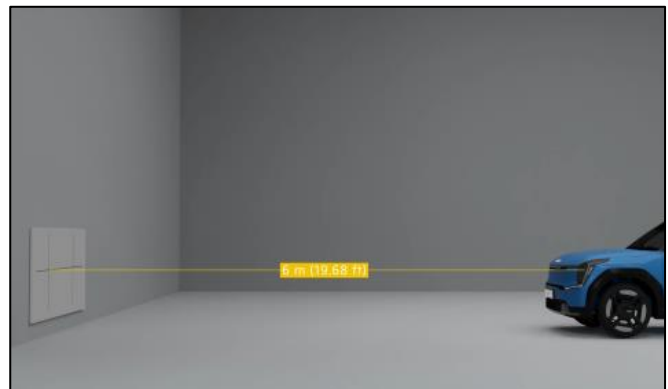
5. Inspect each headlamp separately (LH or RH) for the following steps by covering the opposite headlamp as shown during the inspection procedure.



6. Turn the (Low Beam) headlamps ON.

**ⓘ IMPORTANT**

Ensure that the work area/room is as dark as possible.



7. Open the hood.

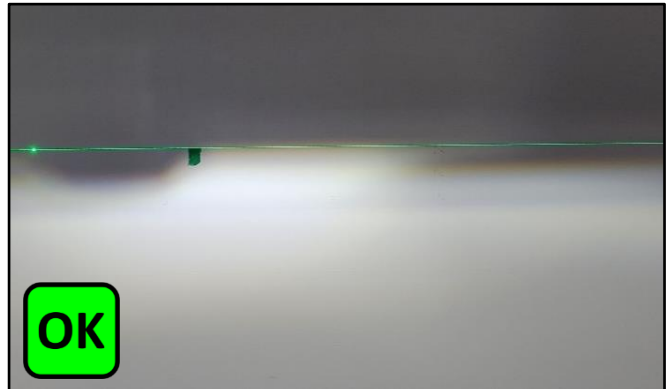
**ⓘ IMPORTANT**

Ensure that the work area/room is as dark as possible.

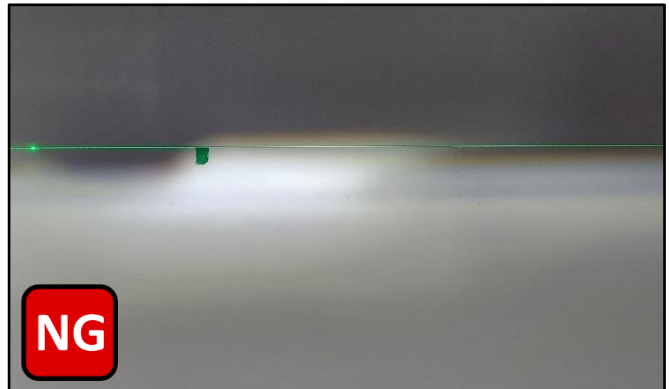


8. Check that each headlamp (low beam) aligns with the cutoff line previously marked.

- Headlamp beam (LH side shown) cuts off at the marked line - **(OK)**. If the headlamps do not require adjustment, no further action is required, and campaign is complete.



- Headlamp beam (LH side shown) cuts off above the marked line - **(NG)**. Proceed to step 9.



9. If either (LH or RH) headlamp(s) require adjustment, proceed to adjust the left and/or right headlamp aim using the (D/U) adjuster located under the hood, next to the affected headlamp(s).



SUBJECT:

**EV9 HEADLAMP AIMING INSPECTION AND ADJUSTMENT (SA574)****AFFECTED VEHICLE RANGE:**

Model	Production Date Range
EV9 (MV)	February 1, 2024 to April 6, 2024

**WARRANTY INFORMATION:****N Code: N99 C Code: C99**

Claim Type	Causal P/N	Qty.	Repair Description	Labor Op Code	Op Time	Replacement P/N	Qty.
V	92101 DO160	0	(SA574) Headlamp Aiming Inspection	240073R0	0.3 M/H	N/A	0
			(SA574) Headlamp Aiming Inspection and Adjustment	240073R1			

**NOTICE**

VIN inquiry data for this repair is provided for tracking purposes only. Kia retailers should reference SA574 when accessing the KDealer+ system.

