

## Technical product information

<b>Topic</b>	Convertible roof - C flap Bowden cable replacement
<b>Market area</b>	Worldwide Bentley (1WBE)
<b>Brand</b>	Bentley
<b>Transaction No.</b>	2033467/2
<b>Level</b>	EH
<b>Status</b>	Approval
<b>Release date</b>	

### New customer code

Object of complaint	Complaint type	Position
Roof systems, special bodies -> Convertible roof, folding roof operation -> Electrically close soft top, folding roof	Noise, vibration -> jolt	
Roof systems, special bodies -> Convertible roof, folding roof operation -> Electrically close soft top, folding roof -> Obstruction detection during rear lid closing	functionality -> without function / defect	

### New workshop code

Object of complaint	Complaint type	Position
Roof systems, special bodies -> Convertible folding roof -> Folding roof bow flap cable	functionality -> too stiff	left
Roof systems, special bodies -> Convertible folding roof -> Folding roof bow flap cable	functionality -> too stiff	right

## Vehicle data

### GTC

#### Sales types

Type	MY	Brand	Designation	Engine code	Gearbox code	Final drive code
394*	2012	E		*	*	*
394*	2013	E		*	*	*
3W4*	2007	E		*	*	*
3W4*	2008	E		*	*	*
3W4*	2009	E		*	*	*
3W4*	2010	E		*	*	*
3W4*	2011	E		*	*	*
3W4*	2012	E		*	*	*
3W4*	2013	E		*	*	*
3W7*	2007	E		*	*	*
3W7*	2008	E		*	*	*
3W7*	2009	E		*	*	*
3W7*	2010	E		*	*	*
3W7*	2011	E		*	*	*
3W7*	2012	E		*	*	*
3W7*	2013	E		*	*	*

#### Chassis numbers

Manufacturer	Filler	Type	Filler	MY	Factory	From	To	Prod from	Prod to
SCB	**	**	*	*	C	000001	085448		

## Documents

Document name
<a href="#">master.xml</a>
<a href="#">master.doc</a>

-

## Customer statement / workshop findings

Check convertible roof function

## Technical background

Continual improvement in system designs can produce developments that may benefit older vehicles. One such development has been identified in the convertible roof mechanism. Re-route the C flap Bowden cable using a longer cable reduces the friction build up in the system and thus promotes smooth operation of the C flap and longevity in the system

## Production change

The longer cables and cross over routing have been integrated into later hood designs from 2013



Figure 1

Figure 1 depicts the original routing of the Bowden cables. Note the sharp radius of the Bowden cable and the multiple clips securing the cable to the tonneau cover all these contribute to the increased friction in the system. The new arrangement removes the sharp radius and deletes all but one of the clips securing each cable to the tonneau cover



Figure 2

Figure 2 depicts the new longer cables following the cross over routing

## Measure

If a specific C flap function issue is being worked and that issue necessitates replacing the Bowden cable then it would be advisable to make the owner aware that you are able to fit the later cross over Bowden cables. If the initial decision to replace the cable was a result of Campaign SC13/12 then the fitting of this new cross over Bowden cable will be warranty, otherwise this service enhancement to improve durability does not qualify for warranty

1. Remove the C flap Bowden cables, reference Rep. Gr 61 C flap Bowden cable – To remove and fit
  - In addition to the above workshop manual procedure fully remove the tonneau carpet panel, this requires a modification to accommodate the new Bowden cables
  - Fully remove and discard the hood stowage compartment carpet panel, this panel is replaced

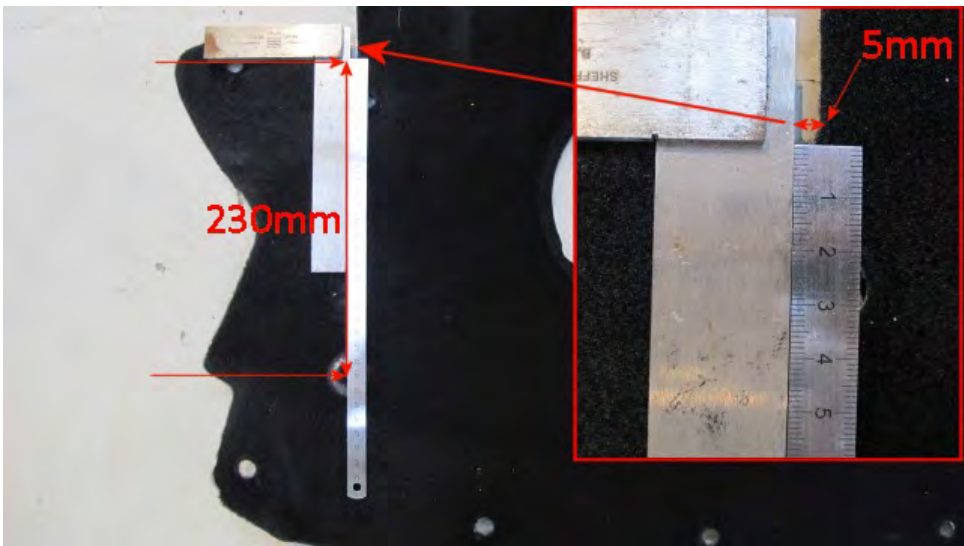


Figure 3

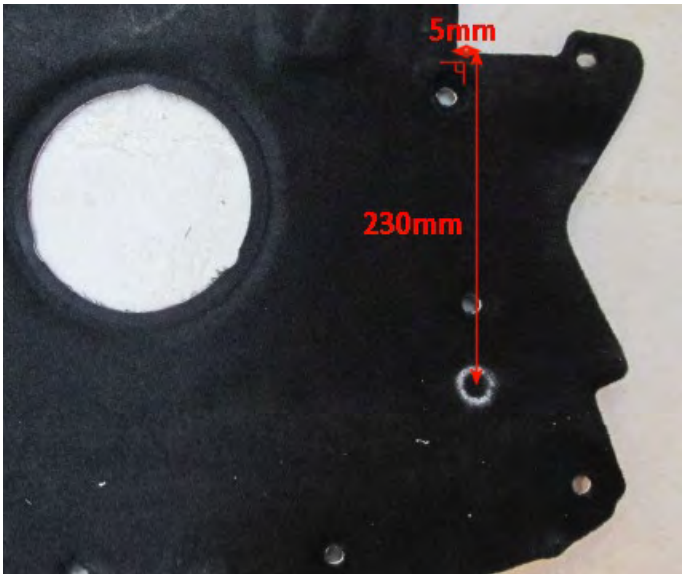


Figure 4



Figure 4

1. Produce two 30 mm holes in the tonneau carpet panel. Position each hole at 230mm along a line drawn 5mm out and at 90° to the vertical C flap cut out on the panel (see Figure 3, 4 and 5) Note in Figure 3 and 4 above the hole position has been highlighted by a white chalk circle
2. To fit the new longer re-routed cross over Bowden cable take into account the following operations in addition to the workshop manual procedure Rep. Gr 61 C flap Bowden cable – To remove and fit

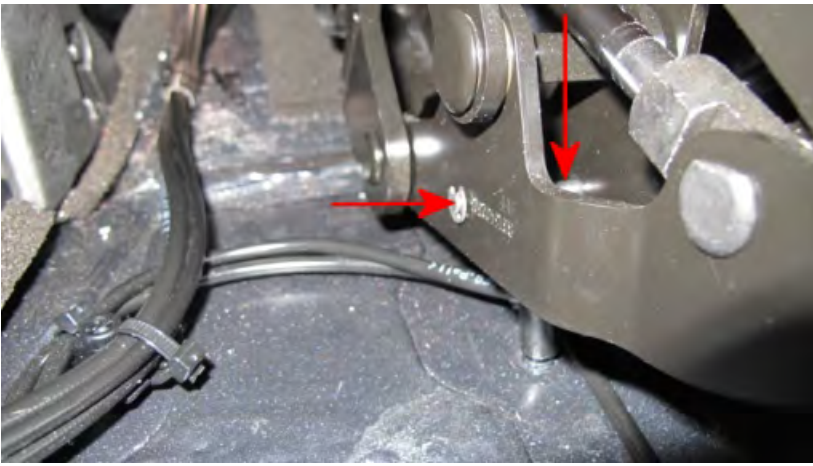


Figure 5

3. The pin securing the drive end of the Bowden cable can, for ease of assembly, be inserted in either direction (see Figure 5)



Figure 6

4. Ensure the new Bowden cable, arrowed, passes under cable cluster D (see Figure 6)



Figure 7

5. Loosely position the modified tonneau carpet panel feeding the right Bowden cable through the hole produced in the left hand side of the carpet and left hand Bowden cable through the right hand hole (see Figure 7)



Figure 8

6. When connecting the new Bowden cable to the C flap the hood will need to be lowered to produce sufficient length in the Bowden cable to enable its attachment to the C flap (see Figure 8)

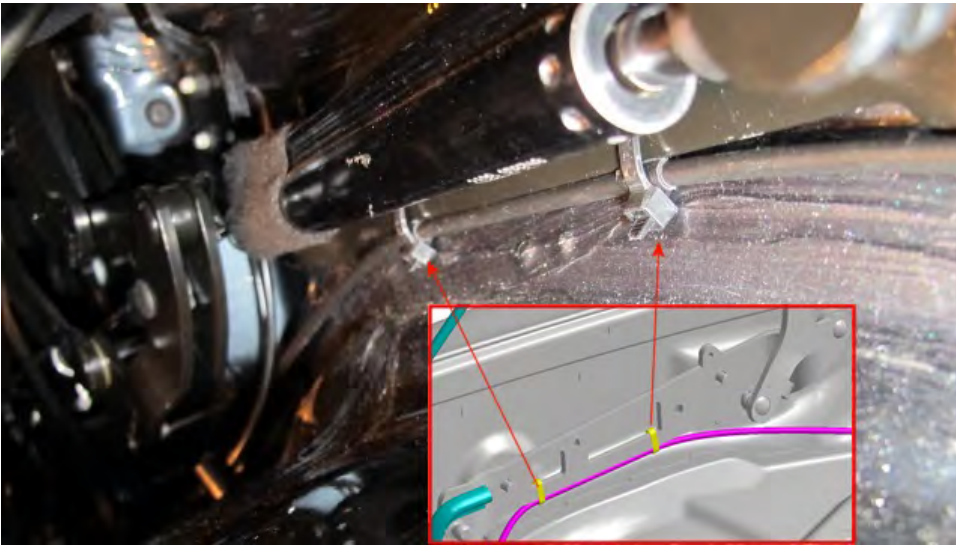


Figure 9

7. Start clipping the cables at the two new positions under the tonneau cover hydraulic ram as per TPI 2033508. Ensure the cable ties are placed at the points identified by the ring of black tape (see Figure 9)

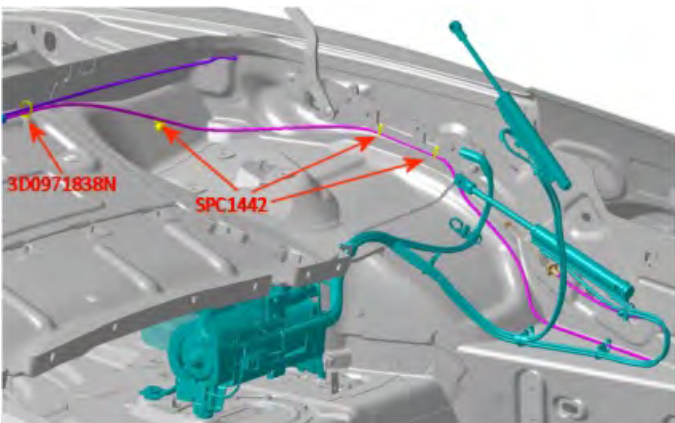


Figure 10

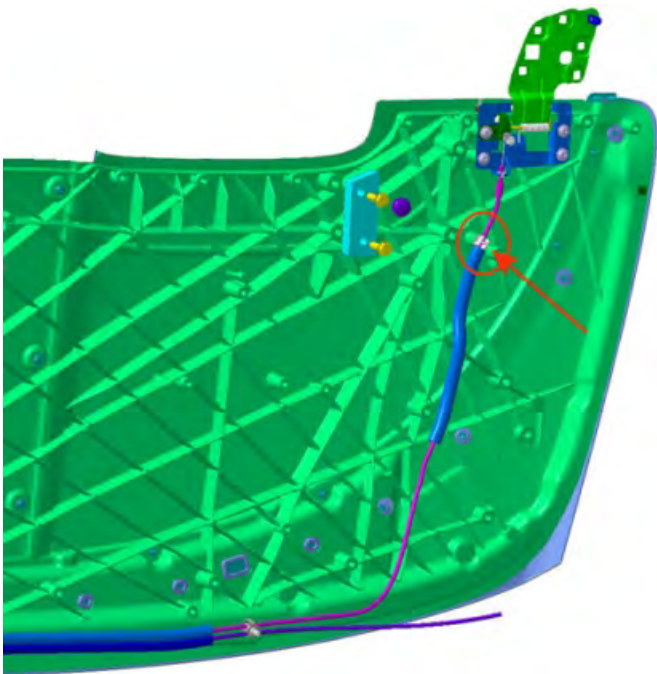


Figure 11

8. For each of the two new Bowden cables three SPC 1442 and one 3D0971838N cable tie are used in the locations shown in figure 10 and one original clip shown in figure 11, all other clips that were previously used to retain the Bowden cable must not be used and therefore can be removed and discarded (see Figure 9,10 and 11)



Figure 12

9. The new Bowden cable has the clipping points identified with a ring of black tape, ensure these markers are aligned with each clip. When clipping the Bowden cable do not over tighten the cable ties, figure 12 shows an Allen key used to gauge the cable tie pull down ensuring a running clearance is produced and over tightening does not occur

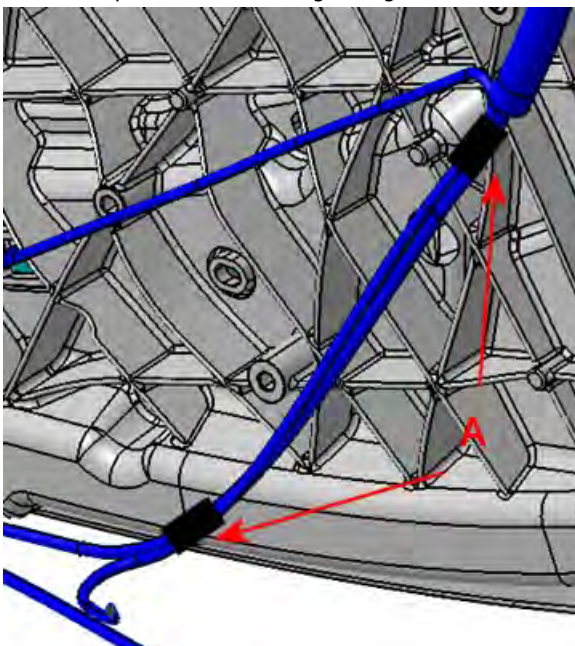


Figure 13



Figure 14

10. Disconnect the high mounted stop lamp cable at the body plug to enable it to be routed through the modified tonneau cover panel. Tape the high mounted stop lamp cable to the new Bowden cable at points (A) figure 13 then fit the longer cable obscuration sleeve (part number 3W7937115B) to the high mounted stop lamp supply cables before reconnecting the body plug (see Figure 14)
11. **Note:** If the obscuration sleeve, part number 3W7937115B is not available the original sleeve fitted to the vehicle can be used with the addition of a section of black tape

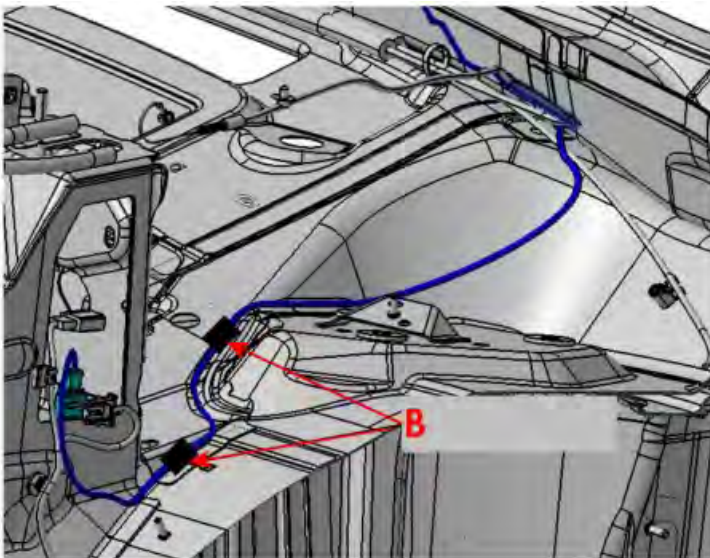


Figure 15

12. Follow the remaining refit procedure as contained in the workshop manual, taping down the high mounted stop lamp cable (B figure 15) to the painted body before fitting the new stowage compartment lower carpet (part number 3W7863479G) in the process (see Figure 16). Reference Rep. Gr 61 C flap Bowden cable – To remove and fit



Figure 16

## Warranty accounting instructions

### **Please Note: Normal warranty policies are applicable**

Warranty Type	910 or 110
Labour Operation Code	61 91 42 00
Damage Service Number	61 91
Damage Code	01 00

**Parts information**

<b>New part number</b>	<b>Description</b>	<b>Quantity</b>
3W7871715B	Bowden cable	2
3W7863479G	Lower carpet hood stowage compartment	1
3D0971838N	Cable tie - body mount	2
SPC1442	Cable tie	6
3W7937115B*	Sleeve (brake light wire)	1

\* **Note:** If the obscuration sleeve, part number 3W7937115B is not available, the original sleeve fitted to the vehicle can be used with the addition of a section of black tape

**Consequential parts that may be required**

<b>Part number</b>	<b>Description</b>	<b>Quantity</b>
N91150301	Carpet bungs	16
N0124341	C clip	2
1Y0871720A	Outer cable clip	2