



# Service Bulletin

Bulletin No.: 23-NA-197

Date: April, 2024


## TECHNICAL

**Subject: Noise from Transmission Area, Malfunction Indicator Lamp (MIL) Illuminated**

Brand:	Model:	Model Year:		VIN:		Engine:	Transmission:
		from	to	from	to		
Chevrolet	Corvette	2020	2023	—	—	—	M1L, M1M

Involved Region or Country	North America, Europe, Middle East, Israel, Japan, Thailand, Australia/New Zealand
Condition	<p>Some customers may comment on one or more of the following conditions:</p> <ul style="list-style-type: none"> <li>• Noise from transmission area</li> <li>• MIL illuminated</li> </ul> <p>Technicians may find multiple DTCs set in the Transmission Control Module:</p> <ul style="list-style-type: none"> <li>• P0746</li> <li>• P0747</li> <li>• P0776</li> <li>• P0777</li> <li>• P0796</li> <li>• P0797</li> <li>• P08C4</li> <li>• P08C5</li> <li>• P0867</li> <li>• P0868</li> <li>• P0869</li> <li>• P1950</li> <li>• P1955</li> <li>• P1956</li> <li>• P1957</li> <li>• P1958</li> <li>• P1959</li> <li>• P1960</li> <li>• P1961</li> <li>• P1962</li> <li>• P1963</li> <li>• P1966</li> <li>• P27BA</li> <li>• P27B9</li> <li>• P27C2</li> <li>• P27CA</li> </ul>

	<ul style="list-style-type: none"><li>• P27C1</li><li>• P27C9</li><li>• P27D1</li><li>• P27D2</li><li>• P2714</li><li>• P2715</li><li>• P2723</li><li>• P2724</li><li>• P2808</li><li>• P2809</li><li>• P2817</li><li>• P2818</li><li>• P282A</li><li>• P2829</li><li>• P2853</li><li>• P2854</li><li>• P2855</li><li>• P2856</li></ul>
--	---

<p><b>Cause</b></p>	 <p>This condition may be caused by a dislodged snap ring in the direct clutch assembly. <span style="float: right;">6444881</span></p> <ul style="list-style-type: none"> <li>- One or more pressure DTCs may set due to the valves sticking in the Main Control Valve (MCV) Body, due to debris.</li> <li>- The direct clutch can contact the fluid tubes, stator shaft and/or the transmission housing.</li> </ul>
<p><b>Correction</b></p>	<p>Refer to the Service Procedure below.</p>

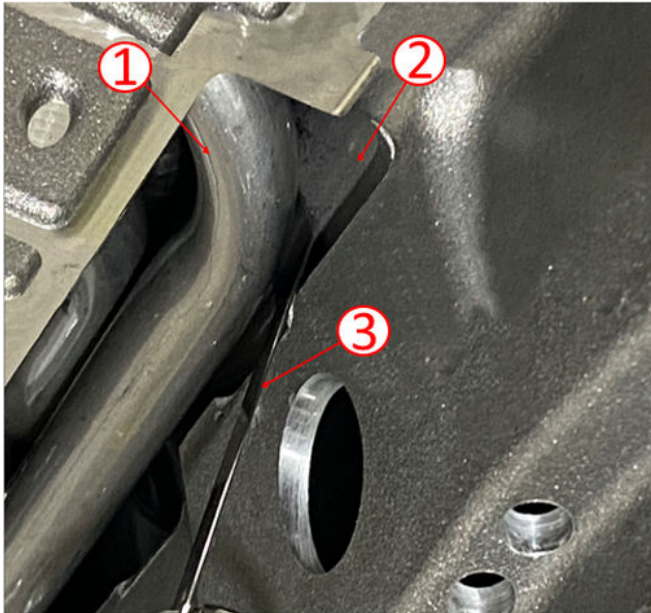
**Important: Service agents must comply with all International, Federal, State, Provincial, and/or Local laws applicable to the activities it performs under this bulletin, including but not limited to handling, deploying, preparing, classifying, packaging, marking, labeling, and shipping dangerous goods. In the event of a conflict between the procedures set forth in this bulletin and the laws that apply to your dealership, you must follow those applicable laws.**

**Service Procedure**

**Vehicle comes into dealer with MIL illuminated (pressure DTCs only).**

1. Verify that the vehicle has the latest TCM calibrations/update.
2. Perform transmission service diagnostic test.
  - If MIL does not return and DTCs do not reset, return the vehicle to the customer.

- If DTCs return, go to step 3.
3. Refer to *Control Valve Body Replacement*.

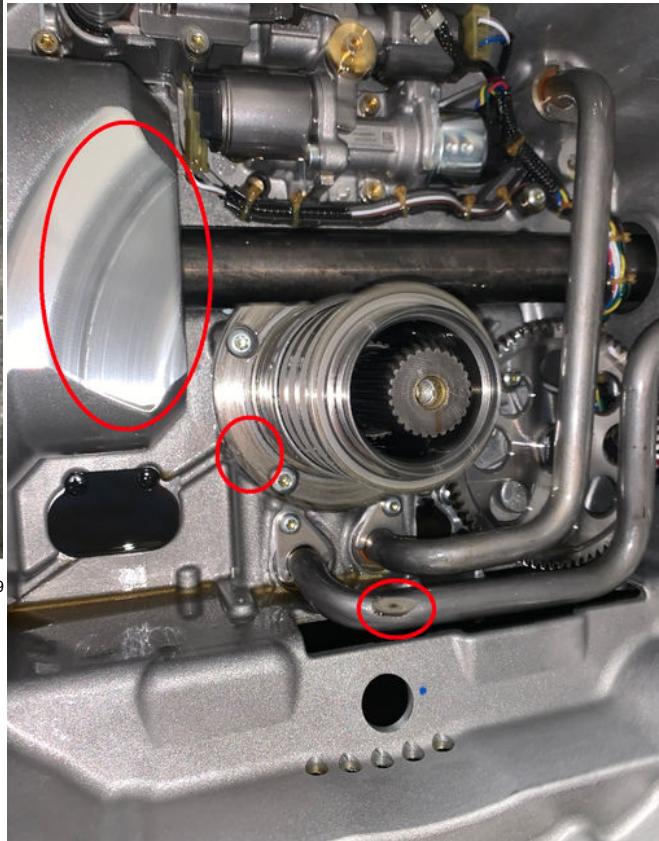


6444679

4. Utilizing a feeler gauge (3), inspect the clearance between the direct clutch (2) and fluid tube (1).
  - ⇒ If clearance is 0.5 mm, follow service information to replace the MCV, filter and canister filter.
  - ⇒ If clearance is 0 mm, remove transmission and go to step 5.

**Note:** If the direct clutch is seized onto the stator housing, the transmission will need replacement.

5. Remove the direct clutch. Refer to *Direct Clutch Replacement*.
  - If the direct clutch has seized to the stator and it cannot be removed, the transmission will have to be replaced.
  - If the direct clutch cannot be turned easily by hand, this is evidence that the snap ring has failed. Remove the direct clutch and inspect the transmission case. If it is found to have damage from direct clutch contact, start a technical assistance case and attach photos.



6444902

**Important:** Light damage to the housing caused by the direct clutch contact, will not require replacement. The graphic above depicts areas of concern.

- If the direct clutch can be removed easily but has contacted the pipe and stator, replace said parts as needed. Refer to SI.

**Note:** The direct clutch and stator housing will need replacement as the causal part.

6. Install the transmission. Refer to *Transmission Replacement*.
7. Perform transmission service fast learn.
  - If DTCs reset, return the vehicle to the customer.

**Vehicle comes into dealer with noise from bell housing area that follows engine RPM and may also have the MIL illuminated.**

1. Verify that the vehicle has the latest TCM calibrations/update.
2. Follow Service Bulletin # 21-NA-049, create TAC case and attach the PICO file.
3. Contact TAC agent for further direction.

## Parts Information

**Note:** Only select the parts that coincide with the repair performed. Replace the part with the P/N outlined in the Electronic Parts Catalog (EPC) in accordance with the vehicle VIN.

Causal Part	Description	Part Number	Qty
X	SHAFT, STAT	24059055 (M1L)	1
		24059054 (M1M)	
X	CLUTCH, DIR	24059057 (M1L)	1
		24059053 (M1M)	
N/A	BOLT, CLU DIFF HSG CVR	24045094	14
N/A	BOLT, CLU HSG	24045732 (M1L)	2
		24048636 (M1M)	16
N/A	GASKET, CLU DIFF HSG CVR	24048637 (M1M)	1
N/A	PLUG, MAIN SHF	24299366	1
N/A	RETAINER, INTER CLU SPR	24048649	1
N/A	SPRING, DIR CLU	24299364	1
N/A	BOLT, STAT SHF	24048653	4
N/A	RETAINER, RR WHL DRV SHF UJT	11546938 (50 Thread Count - M1L)	6
		11601876 (58 Thread Count - M1M)	
N/A	WASHER, FRT WHL DRV SHF	11611965	2
N/A	NUT, FRT WHL DRV HALF SHF SHLD	11612295	2
N/A	BOLT, RR CRADLE BR	11547752	4
N/A	GASKET, CTLTC CONV	10354707	1
N/A	GASKET, CTLTC CONV	23194206	1
N/A	PIPE, A.TRNS FLUID PUMP DRN	24045747	1
N/A	SEAL, A/TRNS FLUID PUMP PIPE	24299307	4
N/A	FILTER, A/TRNS FLUID	24045729	1
N/A	GEAR, A/TRNS FLUID PMP DRV	24299370	1
N/A	BOLT, A/TRNS FLUID PMP DRV GR	24048652	1
N/A	GASKET, A/TRNS FLUID PAN	24047054	1
N/A	SEAL, TRANS FLUID CLR	24299317	2
N/A	FILTER, A/TRNS FLUID	24047742	1
N/A	GASKET, C/MLV BODY	24299343	1
N/A	BODY, C/MLV	24059078	1
N/A	FLUID, A/TRANS	19418016	As Required
N/A	BOLT, A.TRNS FLUID PAN	24045737	As Required
N/A	BOLT, A.TRNS FLUID PAN	24299316	2

Causal Part	Description	Part Number	Qty
N/A	SEAL, TRANS OIL DRN PLUG	24299299	1
N/A	GASKET, A/TRNS FLUID PAN	24048642	1
<b>Note:</b> All pans are specific to DIE of transmission. Technicians should verify all parts are specific to the transmission being worked on by referring to Service Bulletin #23-NA-156 for identification of transmission.			
N/A	<b>Important:</b> Replace the pan only if vehicle has stamped DIE 1 pan. Do Not reuse DIE 1 pans. PAN, A/TRNS FLUID (DIE 2)	24046450	1
N/A	GASKET, A/TRNS FLUID PAN (DIE 2)	24047054	1
N/A	GASKET, A/TRNS FLUID PAN (DIE 3)	24048642	1

### Warranty Information

For vehicles repaired under the Powertrain coverage, use the following labor operation. Reference the Applicable Warranties section of Investigate Vehicle History (IVH) for coverage information.

Labor Operation	Description	Labor Time
8486368*	Control Valve Removal and Contact Inspection	0.8 hr
Add	Stator Shaft and Direct Clutch Replacement	21.2 hrs
Add	Transmission Replacement	19.0 hrs
*This is a unique Labor Operation for bulletin use only.		

Version	1
Modified	Released April 18, 2024

