



Countries: AUSTRALIA, BAHAMAS, BOLIVIA, BRAZIL, BELIZE, CANADA, CHILE, TAIWAN, COLOMBIA, COSTA RICA, DOMINICAN REPUBLIC, ECUADOR, EL SALVADOR, GUAM, GUATEMALA, GUYANA, HAITI, HONDURAS, JAMAICA, KOREA, SOUTH KOREA, ARUBA, NICARAGUA, PANAMA, PERU, PUERTO RICO, SOUTH AFRICA, TRINIDAD AND TOBAGO, UNITED STATES, URUGUAY, VENEZUELA, Curaçao

Document ID: IK0400037

Availability: ISIS, IsSIR

Major System: BRAKES

Current Language: English

Other Languages: [Portuguese](#).

Viewed: 1829

Revision: 8

Created: 8/29/2007

Last Modified: 4/29/2024

Author: William Knoth

[Less Info](#)

Hide Details

Coding Information

Copy Link 	Copy Relative Link 	Bookmark View My Bookmarks	Add to Favorites 	Print 	Provide Feedback 	Helpful 159	Not Helpful 116
----------------------	-------------------------------	--	-----------------------------	------------------	-----------------------------	---------------------------	-------------------------------

Title: Air Brake Pedal Rattle - Fore/Aft Movement

Applies To: 2007 and Newer International Vehicles

CHANGE LOG

Please refer to the change log text box below for recent changes to this article:

08/29/2007 - Article Creation
04/29/2024 - Updated images and removed HPV

DESCRIPTION

If there is a customer complaint of brake pedal rattle or noise, inspect the pedal and see if it is hitting the pedal stop and causing the noise.

If this is happening, a simple addition of a 3/8" rubber hose can be slid over the pedal stop which will eliminate this rattle/noise issue.

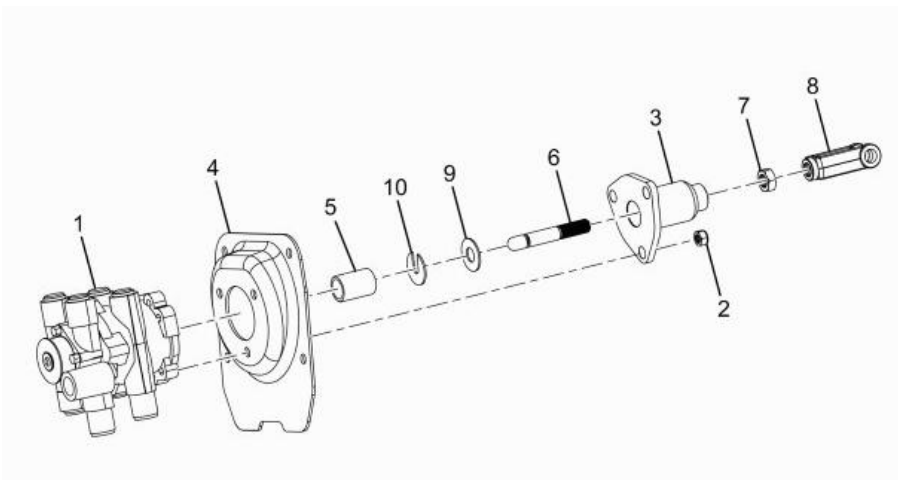
While inspecting pedal, also verify that there are no signs of pedal binding.

NOTE:
It is critical to have at least 1/4" pre-travel in the pedal movement after rubber hose has been installed or adjustment is made to avoid brake drag.



3/8 Fuel line 2" long
One per truck
Installed on peddle stop rod

If rubber line does not remove enough slack and the rattle noise is still a nuisance, adjust the clevis (8), lock nut (7), and push rod (6) to remove more slack. Do not over adjust, leave at least 3 threads on the push rod.



WARRANTY INFORMATION

Not applicable

Standard Repair Time(s):

Refer to the [SRT Manual](#) for Repair Times

OTHER RESOURCES

[Master Service Information Site](#)

 Hide Details

Feedback Information

Viewed: 1828
Helpful: 159
Not Helpful: 116

No Feedback Found