

WPTO - Checking Brake Disc on the Right of the Front Axle and Replacing it if Necessary (Workshop Campaign)

Model Line: **Taycan (Y1A / Y1B / Y1C)**

Model Year: **2024**

Equipment: Front disc brake, with integrated brake carrier (**M-No. 1LR / 1LS**)

Concerns: **Brake disc on front axle, right**

Cause: **There is a possibility that brake discs installed on the right of the front axle on the affected vehicles do not meet the required specifications.**

Due to reduced brake cooling, this can lead to increased brake heating and consequently to brake rubbing. The occurrence of brake noise cannot be ruled out either.

Action: Check brake disc on the right of the front axle and replace it if necessary.

Affected Vehicles: Only vehicles assigned to the campaign (see also PCSS Vehicle Information).

Required parts and materials



Information

Please note that the predicted failure rate is only 10%. The required parts must therefore only be ordered in the event of a fault.

The **part numbers** of the **required parts** for the respective vehicle can be seen in the **assigned scope**. For an overview of the campaign scopes, see: ⇒ *Technical Information 'Warranty processing'*

For materials (lubricants) required for carrying out the action, see the corresponding Workshop Manual in PCSS. These lubricants are usually available in the Porsche Center.

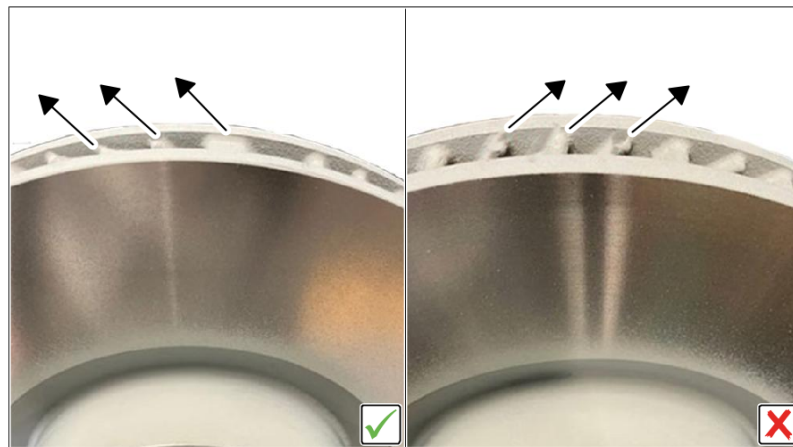
Required tool

- Threaded bolts for fitting wheel
- Torque wrench, 2–10 Nm (1.5–7.5 ftlb.), e.g., **V.A.G 1783 - torque wrench, 2–10 Nm (1.5–7.5 ftlb.)**
- Torque wrench, 6–50 Nm (4.5–37 ftlb.), e.g., **V.A.G 1331A - torque wrench, 6–50 Nm (4.5–37 ftlb.)**
- Torque wrench 40–200 Nm (30–148 ftlb.), e.g., **V.A.G 1332A - torque wrench 40–200 Nm (30–148 ftlb.)**

- **T10145 - Piston reset tool**
- Battery charger with a current rating of **at least 90 A**, e.g. **VAS 5908 - battery charger 90 A**
- **P90999 - PIWIS Tester 4**

Checking brake disc on front axle, right

- Work Procedure: 1 Remove front right wheel. ⇒ *Workshop Manual '440519 Remove and fit wheel'*
- 2 Check direction of rotation of brake disc ventilation ducts on the right of the front axle.



Checking direction of rotation of brake disc ventilation ducts

| Assessment | | Action |
|------------|---|--|
| (✓) | The ventilation ducts are oriented in the anti-clockwise direction. | <p>- End of action -</p> <p>Continue with Step 3 ⇒ .</p> <p>[Invoicing: Scope 1]</p> |
| (x) | The ventilation ducts are oriented in the clockwise direction. | <p>Replace brake discs and disc brake pads on the left and right of the front axle.</p> <p>Continue with ⇒ <i>Technical Information '440519 replacing brake discs and disc brake pads on the left and right of the front axle'</i></p> <p>[Invoicing: Scope 2]</p> |

- 3 Install front right wheel. ⇒ *Workshop Manual '440519 Remove and fit wheel'*
- 4 Enter the campaign in the Warranty and Maintenance logbook.

Replacing brake discs and disc brake pads on the left and right of the front axle

- 1 Replace brake discs and disc brake pads on the left and right of the front axle. ⇒ *Workshop Manual '465019 Removing and installing front brake disc'*
⇒ *Workshop Manual '463656 Replacing front disc brake pads'*
- 2 Check brake fluid level and correct it if necessary.
For procedure, see: ⇒ *Workshop Manual '470855 Replacing brake fluid'*
- 3 Enter the campaign in the Warranty and Maintenance logbook.

Warranty processing



Information

The specified labor times were determined specifically for carrying out this campaign and include all necessary preliminary and subsequent rework. The labour times may differ from the labor times published in the Labor Operation List in PCSS.

Scope 1: **Checking brake disc on front axle, right**

| | | |
|--|--|--------------------------|
| Labor time: | | Labor time: 22 TU |
| Checking brake disc on front axle, right | | |
| Includes: Remove and install wheel | | |
| ⇒ Damage number WPT0 066 000 1 | | |

Scope 2: **Replacing brake discs and disc brake pads on the left and right side of the front axle**

| | | |
|--|-----------------------------------|---------------------------|
| Labor time: | | Labor time: 195 TU |
| Replacing brake discs and disc brake pads on the left and right side of the front axle | | |
| Includes: Remove and install wheel | | |
| Removing and installing wheel housing liner front | | |
| Loosening and fastening brake calliper front | | |
| Checking brake fluid level | | |
| Required parts: | | |
| Part No. | Designation – Location | Quantity |
| 9J1615301A | Brake disc – Front axle, left | 1 piece |

| | | |
|---------------------------------------|---|----------|
| 9J1615302A | Brake disc – Front axle, right | 1 piece |
| 9J1698151J | Set of brake pads for disc brakes | 1 piece |
| N 10456004 | Internal hexagon round countersunk screw, self-locking, M6 x 12 – Brake disc to wheel hub | 4 pieces |
| PAF004571 | Collared cheese head bolt with multiple-tooth head, M14 x 1.5 x 115 – Brake calliper to wheel bearing housing | 4 pieces |
| 971907253 | Sender wire (brake pad wear indicator) | 2 pieces |
| 9A769826900 | Retainer spring | 4 pieces |
| ⇒ Damage number WPTO 066 000 2 | | |

Important Notice: Technical Bulletins issued by Porsche Cars North America, Inc. are intended only for use by professional automotive technicians who have attended Porsche service training courses. They are written to inform those technicians of conditions that may occur on some Porsche vehicles, or to provide information that could assist in the proper servicing of a vehicle. Porsche special tools may be necessary in order to perform certain operations identified in these bulletins. Use of tools and procedures other than those Porsche recommends in these bulletins may be detrimental to the safe operation of your vehicle, and may endanger the people working on it. Properly trained Porsche technicians have the equipment, tools, safety instructions, and know-how to do the job properly and safely. Part numbers listed in these bulletins are for reference only. The work procedures updated electronically in the Porsche PIWIS diagnostic and testing device take precedence and, in the event of a discrepancy, the work procedures in the PIWIS Tester are the ones that must be followed.

© 2024 Porsche Cars North America, Inc.