

Diagnostic and Repair Plan

FSC 13-24-5902 Missing HV cable clamps

Version 1, Online

ISSUE DESCRIPTION:

Cable clamp missing on some BEB Gen3.0 buses for the HV Charge port cables near the curbside HVJBox.

SYMPTOMS:

Cables rubbing together or against support bracket

TOOLS REQUIRED:

Basic socket and wrench set for clamping hardware

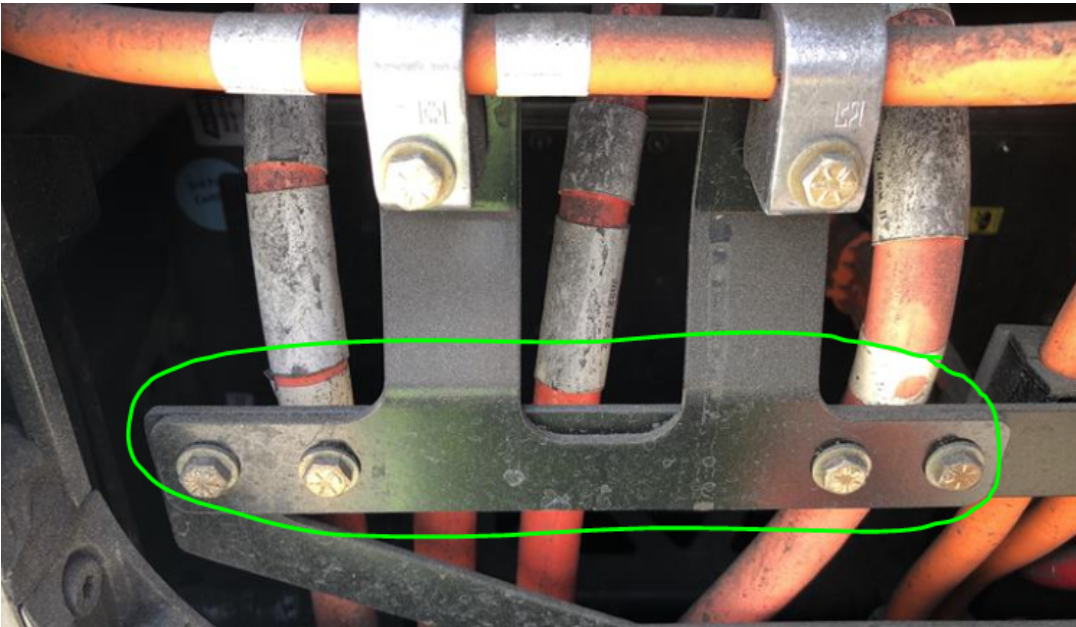
PARTS REQUIRED:

1x- Nylon cable clamp:	13-82044-001
1x- Bracket reinforcement:	13-82046-000
2x- Bolt hexhd 1/4-20 x 3.5:	54-11317-013
2x- Washer, 1/4 flat:	54-12601-006
A/R- Loctite 243 blue	65-39908N054
REF: Installation Drawing:	10-84481-010

DIAGNOSTIC STEPS:

Verify nylon cable clamp is missing by visual inspection - visible through upper rear curbside access door.

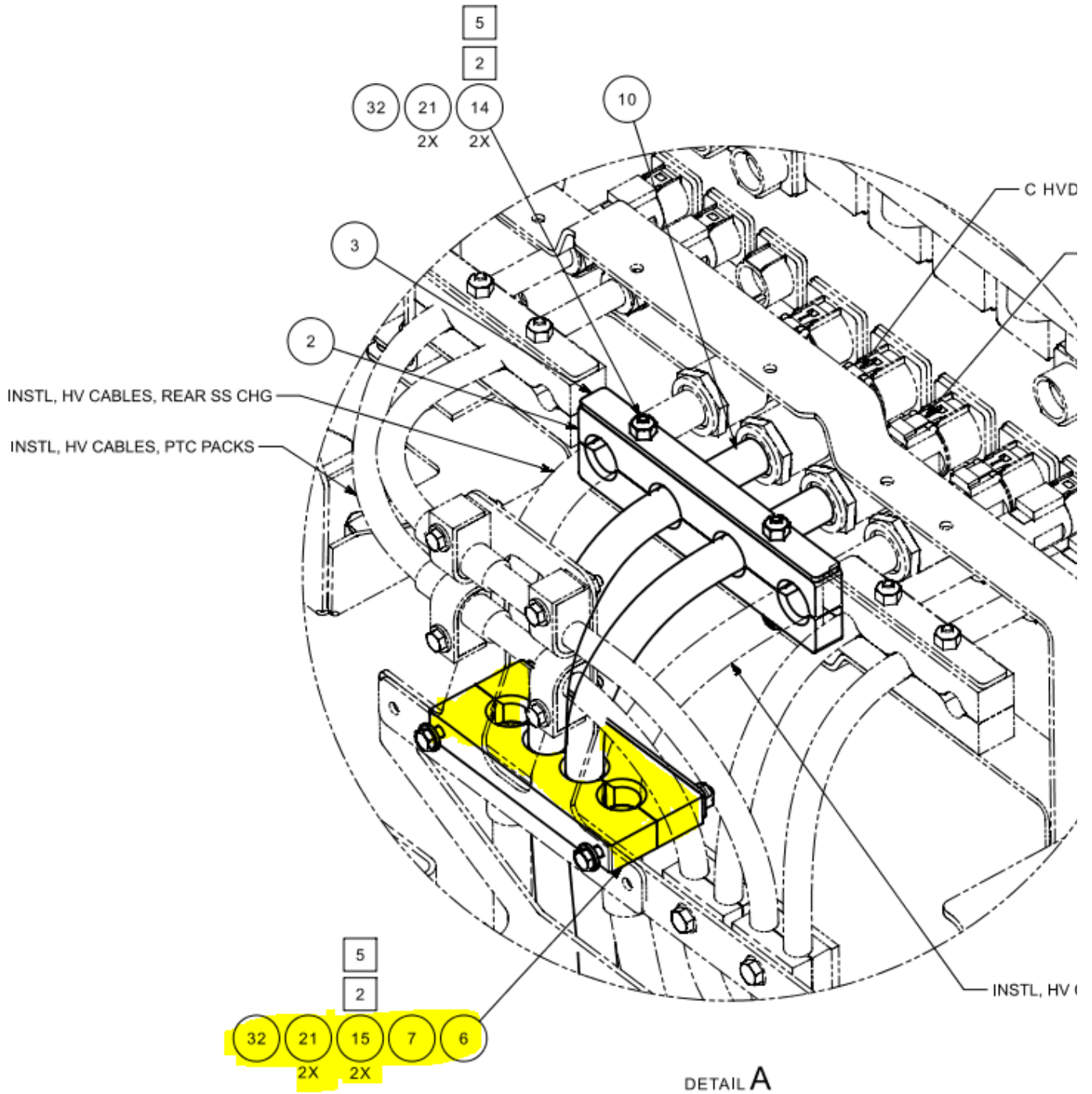
FSC 13-24-5902 Missing HV cable clamps



REPAIR STEPS:

FSC 13-24-5902 Missing HV cable clamps

Install clamp per installation drawing 10-84481-010



2 TORQUE .2500-20 GR8 HARDWARE TO 6.0±0.5 FT-LB.

FSC 13-24-5902 Missing HV cable clamps

5 ADD LOCTITE 243 BLUE TO BOLT THREADS BEFORE HARDWARE ATTACHMENT.

LABOR INFORMATION:

0.3

WARRANTY CLAIMS:

Repair is reimbursable through GILLIG Warranty. Include the Repair Plan bulletin number in the "Describe Specific Repairs Section" (3C's) of GILLIG Application for Warranty Form.

PARTS RETURN DISPOSITION:

N/A