

TECHNICAL INSTRUCTIONS

FOR

LIMITED SERVICE CAMPAIGN 24TD01

Premature Tire Wear

CERTAIN 2022-2023 Tundra HV TRD Pro vehicles

Updated

03/04/2024 – Updated flow chart for clarity and added step for vehicles not equipped with Falken WildPeak A/T 285/65R18

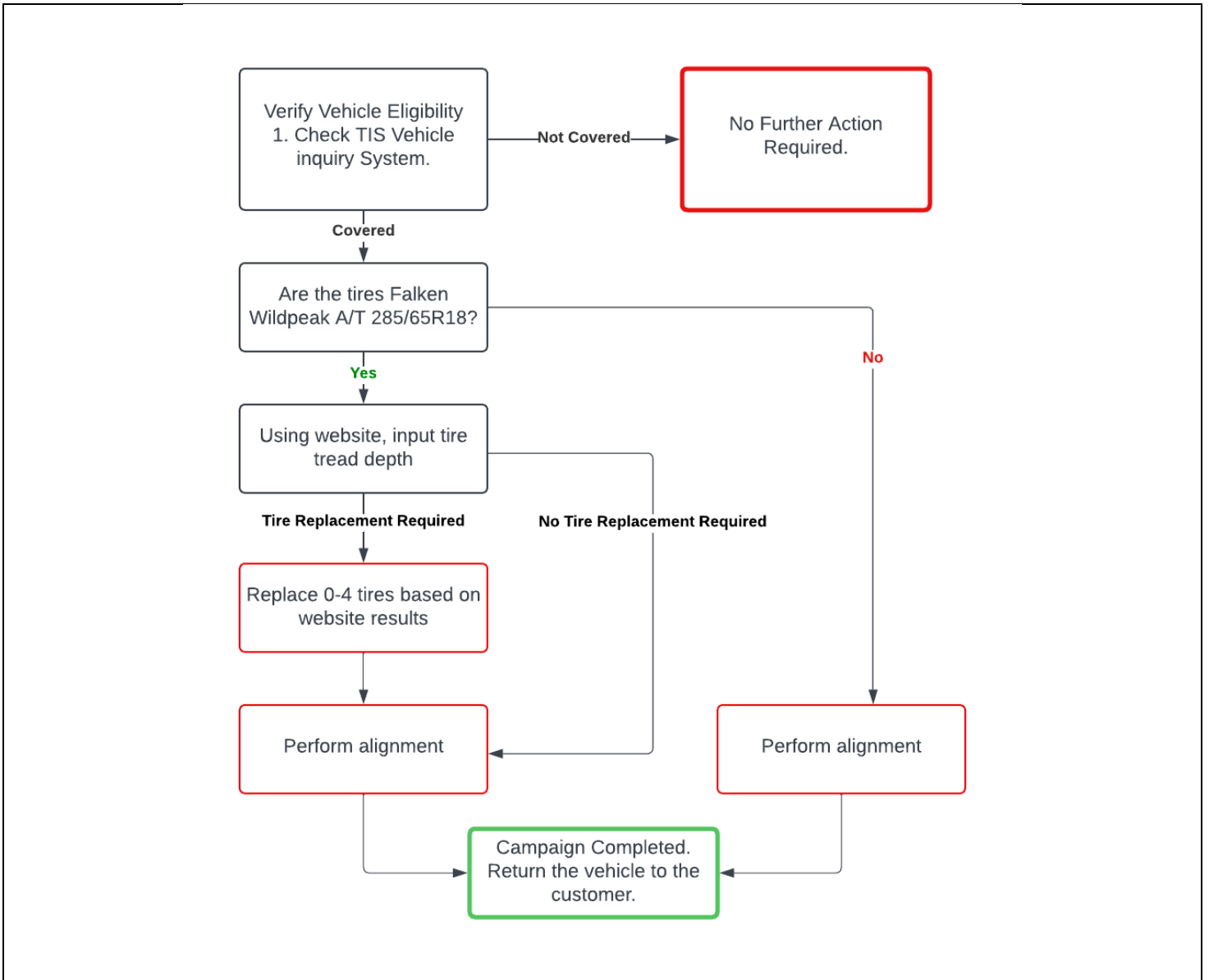
Technician Training Requirements

The repair quality of covered vehicles is extremely important to Toyota. All dealership technicians performing this repair are required to successfully complete the most current version of the E-Learning course “Safety Recall and Service Campaign Essentials”. To ensure that all vehicles have the repair performed correctly; technicians performing this repair are required to have currently completed the following courses:

T4535 – Steering, Suspension & Handling

Always check which technicians can perform the repair by logging on to <https://www.uotdealerreports.com>. It is the dealership’s responsibility to select technicians with the above certification level or greater to perform this repair. Carefully review your resources, the technician skill level, and ability before assigning technicians to this repair. It is important to consider technician days off and vacation schedules to ensure there are properly trained technicians available to perform this repair at all times.

I. OPERATION FLOW CHART



II. IDENTIFICATION OF AFFECTED VEHICLES

1. CHECK VEHICLE FOR CAMPAIGN ELIGIBILITY

- Compare the vehicles VIN to the VIN listed on the Repair Order to ensure they match.
- Check the TIS Vehicle Inquiry System to confirm the VIN is involved in this Campaign, and that it has not already been completed.

Note: TMNA warranty will not reimburse dealers for repairs completed on vehicles that are not affected or were previously completed, even by another dealer.

III. PREPARATION

A. PARTS

Part Number	Part Description	Quantity
DT005-00770-FA	Falken Wildpeak A/T 285/65R18	Based on website inspection results

B. TOOLS & EQUIPMENT

<ul style="list-style-type: none">Techstream	<ul style="list-style-type: none">Standard Hand Tools	<ul style="list-style-type: none">Torque Wrench
<ul style="list-style-type: none">Tread Depth Gauge		

C. MATERIALS

<ul style="list-style-type: none">Protective Gloves	<ul style="list-style-type: none">Protective Glasses	<ul style="list-style-type: none">Wheel weights
---	--	---

IV. BACKGROUND

In the subject vehicles, the original factory toe angle setting on the front wheels may cause excessive contact of the outside shoulders of the tires, resulting in premature wear.

V. WORK PROCEDURE

1. CONFIRM TIRES ON VEHICLE ARE ORIGINAL/FACTORY

a. Confirm tires on vehicle are original/factory and vehicle is unloaded. The original/factory tires are Falken Wildpeak A/T 285/65R18.

b. **If tires are not original/factory (Falken Wildpeak A/T 285/65R18), proceed to step 6.**



Note: This Limited Service Campaign covers only the tires of subject vehicles if equipped with original/factory tires, as detailed in these instructions. It does not cover the diagnosis or replacement of any other parts on the vehicle or aftermarket tires which may have been installed on the vehicle.

2. MEASURE TIRE TREAD DEPTH

- a) Using a tire tread depth gauge, measure all 4 tires from the outside shoulder 30mm from the edge as shown by the arrow in the image below.



- b) Take pictures of each tire measurement for website submission as shown below.

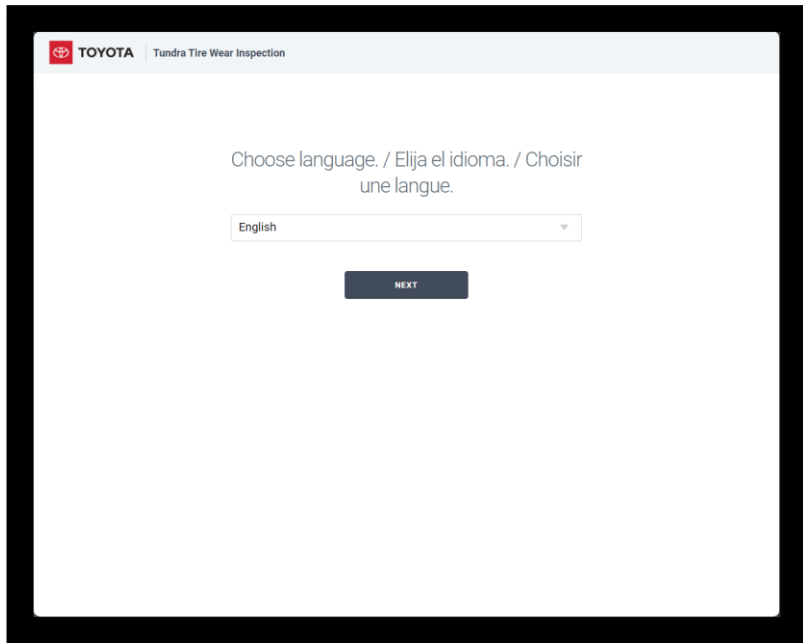
Example Photo:



3. INPUT TREAD DEPTH MEASUREMENTS USING WEBSITE

URL: <https://24td01.imagespm.info/>

- a) Select language as shown below.



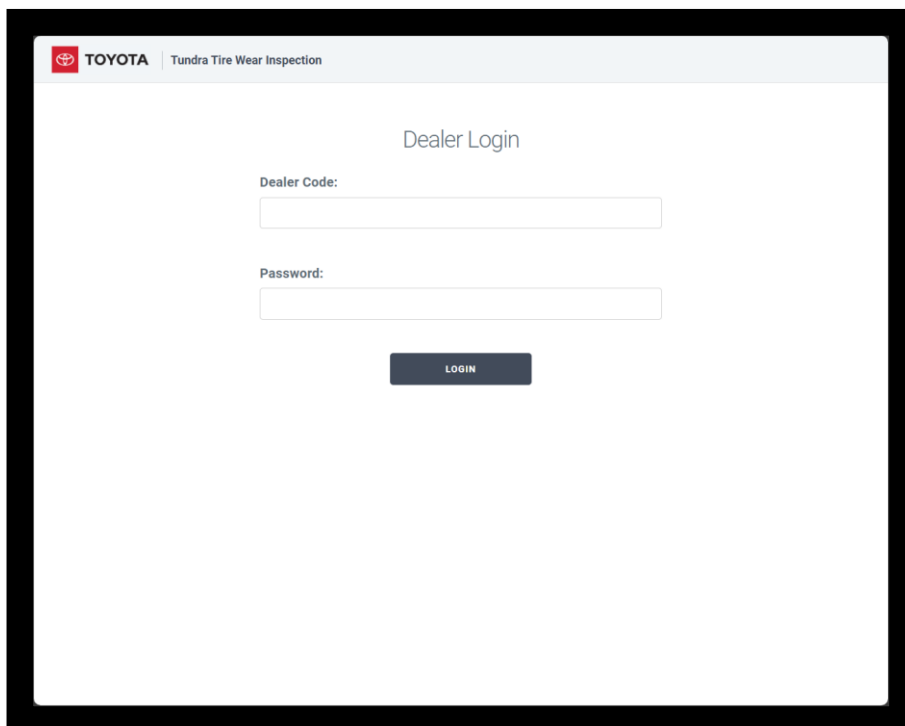
- b) Enter your dealer login credentials and follow the instructions to complete the inspection.

Username: Dealer code

Password: XXXXX

- c) Input Dealer Code

Note: Default password is 5 X's. This password can be changed by the dealership after the first login. Please make sure all eligible technicians in your dealership know the password for your dealership.



d) Enter VIN.

The screenshot shows the Toyota Tundra Tire Wear Inspection website. At the top, there is a navigation bar with the Toyota logo, the text "TOYOTA | Tundra Tire Wear Inspection", and links for "New Inspection", "Previous Inspections", "Reset Password", and "Sign out". The main heading is "Enter Vehicle VIN". Below this, a message states: "Enter the 17-digit Vehicle Identification Number to begin inspection process for this campaign." There is a text input field labeled "VIN" and a "SEARCH" button.

e) Input tread depth measurements and serial numbers using website as shown below.

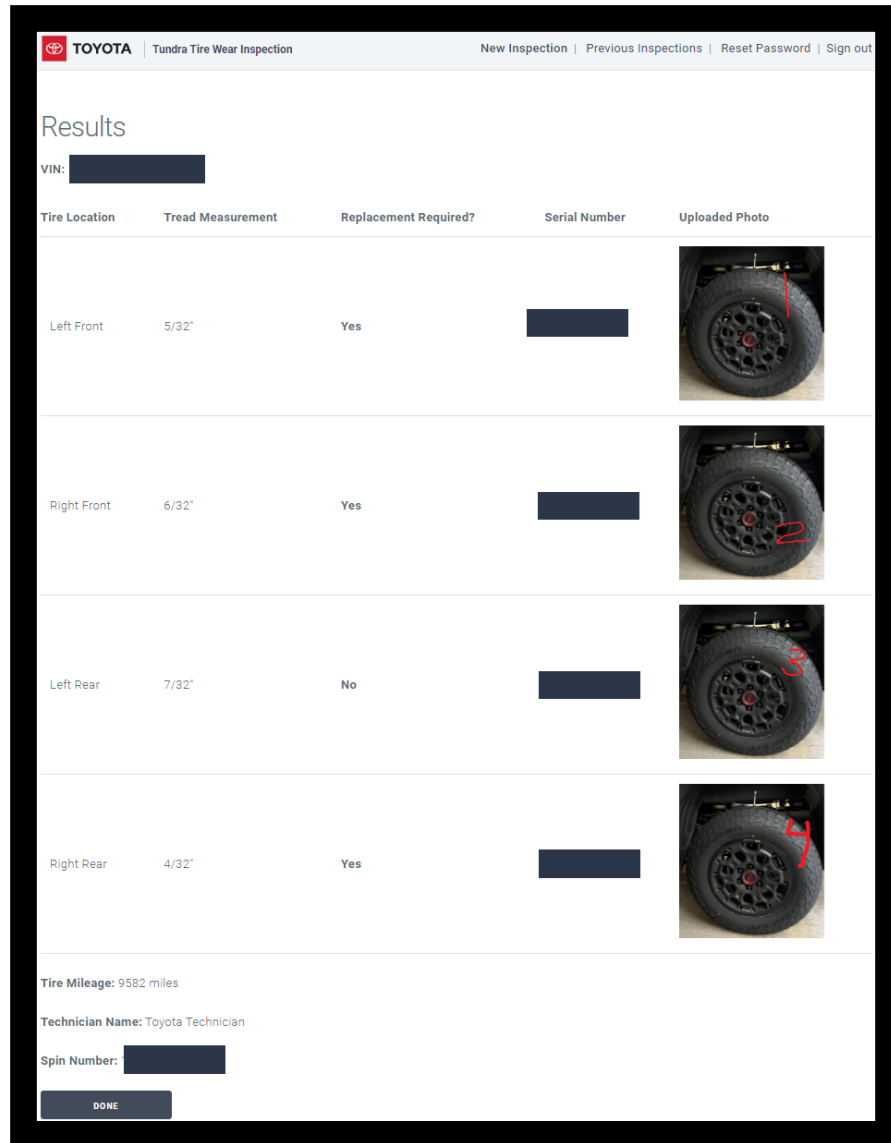
The screenshot shows the "Tire Measurements" section of the website. It features a central vehicle diagram with four quadrants for tire data. Each quadrant includes a tread depth dropdown menu, a serial number input field, and a "Choose File" button for uploading a photo of the tire. The data entered is as follows:

Wheel Position	Tread Depth	Serial Number
Left Front Wheel	5/32"	[Redacted]
Right Front Wheel	6/32"	[Redacted]
Left Rear Wheel	7/32"	[Redacted]
Right Rear Wheel	4/32"	[Redacted]

Below the tire data, there are fields for "Tire Mileage" (9582), "Technician Name" (Toyota Technician), and "SPIN ID" (Redacted). A "Sample Image" of a tire tread is shown on the right. At the bottom, there are "SUBMIT" and "CANCEL" buttons.

4. CHECK RESULTS ON WEBSITE TO DETERMINE IF ANY TIRES REQUIRE REPLACEMENT

- a) Check results on website to determine if any tires require replacement.
- b) If no replacement is required, proceed to step 6.



5. REPLACE TIRES ACCORDING TO THE INSPECTION RESULTS.

- a) Refer to TIS for instructions on MAINTENANCE: TIRE AND WHEEL: INSTALLATION ([RM100000001Z2E9](#))

6. CONFIRM ALIGNMENT SPECIFICATIONS MATCH THE REPAIR MANUAL.

- a) Confirm updated alignment specifications match the Repair Manual. ([RM1000000023CSC](#))
- b) If the alignment specifications do not match your alignment machine specifications, manually input the updated alignment specifications from the Repair Manual.
 - (1) Refer to your alignment machine user manual for instructions on how to change alignment specifications.

7. PERFORM ALIGNMENT ACCORDING TO THE UPDATED SPECIFICATIONS IN THE REPAIR MANUAL.

- a) Perform alignment according to the updated specifications in the Repair Manual. ([RM1000000023CSC](#))

8. TEST DRIVE VEHICLE TO CONFIRM VEHICLE DRIVES STRAIGHT AND STEERING WHEEL IS CENTERED AFTER ALIGNMENT

- a) Test drive vehicle to confirm vehicles drives straight and steering wheel is centered after alignment.

◀ VERIFY REPAIR QUALITY ▶

- Confirm tires were replaced correctly (if required).
Double check if the correct torque is applied depending on the wheel type.
for Steel Wheel : 209 N-m {2131 kgf-cm, 154 ft-lbf}
for Aluminum Wheel : 131 N-m {1336 kgf-cm, 97 ft-lbf}
- Confirm alignment was performed correctly.

If you have any questions regarding this update, please contact your regional representative.

VI. APPENDIX

A. PARTS DISPOSAL

In accordance with Federal law, please make sure all recalled parts (original parts) removed from the vehicle are disposed of in a manner in which they will not be reused, **unless requested for parts recovery return.**

B. CAMPAIGN DESIGNATION DECORDER

