



Bulletin No.: PIC6541
Published date: 03/12/2024

Preliminary Information

PIC6541 Diagnostic Tip For Dead Battery - Parasitic Drain

Proactive

Models

Brand:	Model:	Model Years:	VIN:		Engine:	Transmissions:
			from	to		
Cadillac	CTS	2014 - 2019	All	All	All	All

Involved Region or Country	North America
Condition	Customer may have a complaint of multifunction switch indicators staying illuminated and/or a dead battery condition with a parasitic drain of 300-360mA.
Cause	Aftermarket lamp assemblies.

Correction:

This condition could be caused by aftermarket lamp assemblies back feeding voltage to the BCM, keeping the BCM awake. See examples below.



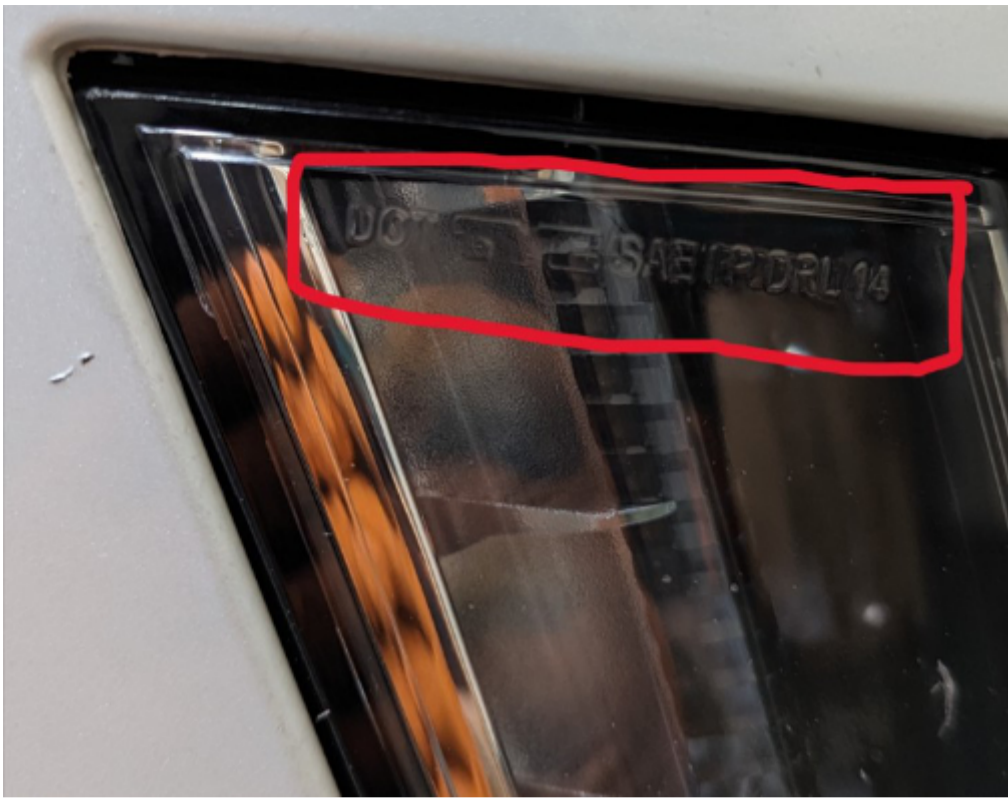
O.E.M LH Park/Turn Signal Lamp Assembly.



O.E.M LH Park/Turn Signal Lamp Assembly.



Aftermarket RH Park/Turn Signal Lamp Assembly.



Aftermarket RH Park/Turn Signal Lamp Assembly.

Version History

Version	1
Modified	03/12/2024 - Created on.



GENERAL MOTORS

© 2024 General Motors. All Rights Reserved.